


Home report

8007 Amberwood Court,Roanoke,Virginia,United States




Property summary




1

Garages




4

Bedrooms



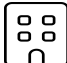
3

Bathrooms




1

Half baths




3

Floors



2,920

Gross living area sqft

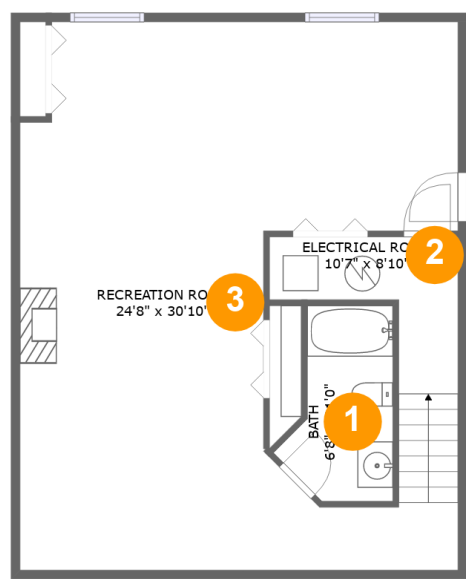


3,763

Total sqft

Home report

8007 Amberwood Court,Roanoke,Virginia,United States



Room dimensions

Floor 1 Total sqft: 818 Living area: 735

#		Dimensions	sqft	Counted as living area
1	Bath	6'8" x 11'0"	56 sq. ft	Yes
2	Electrical Room	10'7" x 8'10"	75 sq. ft	No
3	Recreation Room	24'8" x 30'10"	587 sq. ft	Yes

Home report

8007 Amberwood Court,Roanoke,Virginia,United States



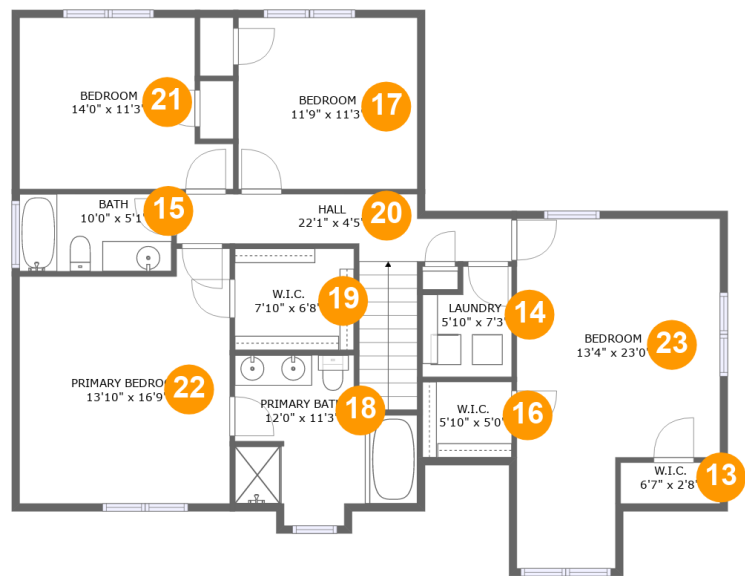
Room dimensions

Floor 2 Total sqft: 1634 Living area: 896

#		Dimensions	sqft	Counted as living area
4	Porch	26'4" x 3'0"	81 sq. ft	No
5	WC	5'0" x 5'9"	29 sq. ft	Yes
6	Foyer	9'6" x 6'10"	96 sq. ft	Yes
7	Garage	19'5" x 23'0"	446 sq. ft	No
8	Kitchen	14'1" x 12'11"	172 sq. ft	Yes
9	Dining Area	12'0" x 12'11"	155 sq. ft	Yes
10	Screened Porch	16'1" x 9'3"	150 sq. ft	No
11	Hall	9'6" x 3'6"	33 sq. ft	Yes
12	Living Room	16'8" x 18'9"	320 sq. ft	Yes

Home report

8007 Amberwood Court,Roanoke,Virginia,United States



Room dimensions

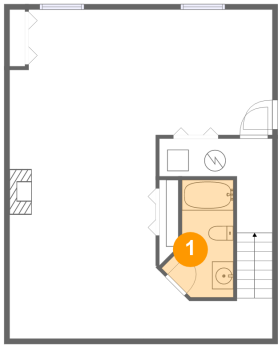
Floor 3

Total sqft: 1311

Living area: 1289

#		Dimensions	sqft	Counted as living area
13	W.I.C.	6'7" x 2'8"	18 sq. ft	No
14	Laundry	5'10" x 7'3"	38 sq. ft	Yes
15	Bath	10'0" x 5'1"	51 sq. ft	Yes
16	W.I.C.	5'10" x 5'0"	29 sq. ft	Yes
17	Bedroom	11'9" x 11'3"	133 sq. ft	Yes
18	Primary Bath	12'0" x 11'3"	105 sq. ft	Yes
19	W.I.C.	7'10" x 6'8"	52 sq. ft	Yes
20	Hall	22'1" x 4'5"	111 sq. ft	Yes
21	Bedroom	14'0" x 11'3"	138 sq. ft	Yes
22	Primary Bedroom	13'10" x 16'9"	213 sq. ft	Yes
23	Bedroom	13'4" x 23'0"	257 sq. ft	Yes

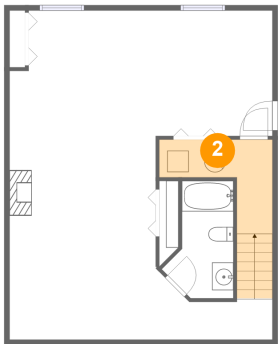
1 Floor 1 - Bath



Dimensions: 6'8" x 11'0"
Area: 56 sq. ft
Counted as living area: Yes

Heated: Yes
Finished: Yes
Enclosed: Yes
Contiguous: Yes
Permitted: Yes
Wet space: Yes
Addition: No
Conversion: No

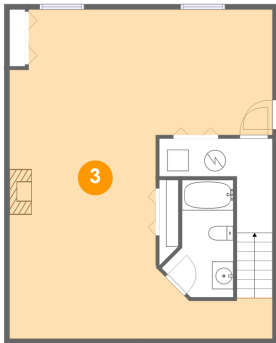
2 Floor 1 - Electrical Room



Dimensions: 10'7" x 8'10"
Area: 75 sq. ft
Counted as living area: No

Heated: No
Finished: No
Enclosed: Yes
Contiguous: Yes
Permitted: Yes
Wet space: No
Addition: No
Conversion: No

3 Floor 1 - Recreation Room



Dimensions: 24'8" x 30'10"
Area: 587 sq. ft
Counted as living area: Yes

Heated: Yes
Finished: Yes
Enclosed: Yes
Contiguous: Yes
Permitted: Yes
Wet space: No
Addition: No
Conversion: No

4 Floor 2 - Porch



Dimensions: 26'4" x 3'0"
Area: 81 sq. ft
Counted as living area: No

Heated: No
Finished: Yes
Enclosed: No
Contiguous: Yes
Permitted: Yes
Wet space: No
Addition: No
Conversion: No

5 Floor 2 - WC



Dimensions: 5'0" x 5'9"
Area: 29 sq. ft
Counted as living area: Yes

Heated: Yes
Finished: Yes
Enclosed: Yes
Contiguous: Yes
Permitted: Yes
Wet space: Yes
Addition: No
Conversion: No

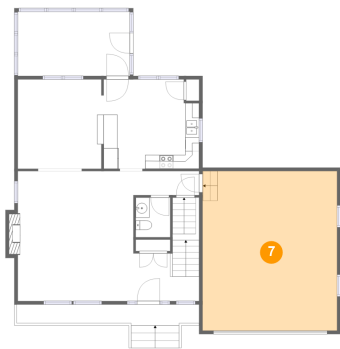
6 Floor 2 - Foyer



Dimensions: 9'6" x 6'10"
Area: 96 sq. ft
Counted as living area: Yes

Heated: Yes
Finished: Yes
Enclosed: Yes
Contiguous: Yes
Permitted: Yes
Wet space: No
Addition: No
Conversion: No

7 Floor 2 - Garage



Dimensions: 19'5" x 23'0"
Area: 446 sq. ft
Counted as living area: No

Heated: No
Finished: No
Enclosed: Yes
Contiguous: Yes
Permitted: Yes
Wet space: No
Addition: No
Conversion: No

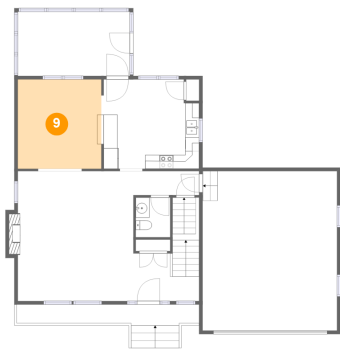
8 Floor 2 - Kitchen



Dimensions: 14'1" x 12'11"
Area: 172 sq. ft
Counted as living area: Yes

Heated: Yes
Finished: Yes
Enclosed: Yes
Contiguous: Yes
Permitted: Yes
Wet space: No
Addition: No
Conversion: No

9 Floor 2 - Dining Area



Dimensions: 12'0" x 12'11"
Area: 155 sq. ft
Counted as living area: Yes

Heated: Yes
Finished: Yes
Enclosed: Yes
Contiguous: Yes
Permitted: Yes
Wet space: No
Addition: No
Conversion: No

10 Floor 2 - Screened Porch



Dimensions: 16'1" x 9'3"
Area: 150 sq. ft
Counted as living area: No

Heated: No
Finished: Yes
Enclosed: No
Contiguous: Yes
Permitted: Yes
Wet space: No
Addition: No
Conversion: No

11 Floor 2 - Hall



Dimensions: 9'6" x 3'6"
Area: 33 sq. ft
Counted as living area: Yes

Heated: Yes
Finished: Yes
Enclosed: Yes
Contiguous: Yes
Permitted: Yes
Wet space: No
Addition: No
Conversion: No

12 Floor 2 - Living Room



Dimensions: 16'8" x 18'9"
Area: 320 sq. ft
Counted as living area: Yes

Heated: Yes
Finished: Yes
Enclosed: Yes
Contiguous: Yes
Permitted: Yes
Wet space: No
Addition: No
Conversion: No

13 Floor 3 - W.I.C.



Dimensions: 6'7" x 2'8"
Area: 18 sq. ft
Counted as living area: No

Heated: Yes
Finished: Yes
Enclosed: Yes
Contiguous: Yes
Permitted: Yes
Wet space: No
Addition: No
Conversion: No

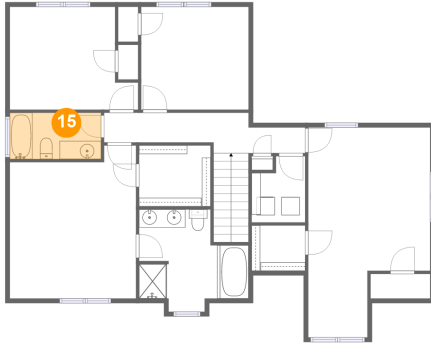
14 Floor 3 - Laundry



Dimensions: 5'10" x 7'3"
Area: 38 sq. ft
Counted as living area: Yes

Heated: Yes
Finished: Yes
Enclosed: Yes
Contiguous: Yes
Permitted: Yes
Wet space: No
Addition: No
Conversion: No

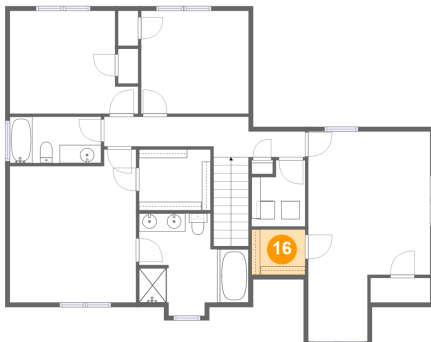
15 Floor 3 - Bath



Dimensions: 10'0" x 5'1"
Area: 51 sq. ft
Counted as living area: Yes

Heated: Yes
Finished: Yes
Enclosed: Yes
Contiguous: Yes
Permitted: Yes
Wet space: Yes
Addition: No
Conversion: No

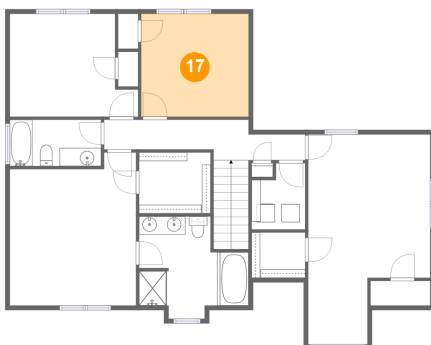
16 Floor 3 - W.I.C.



Dimensions: 5'10" x 5'0"
Area: 29 sq. ft
Counted as living area: Yes

Heated: Yes
Finished: Yes
Enclosed: Yes
Contiguous: Yes
Permitted: Yes
Wet space: No
Addition: No
Conversion: No

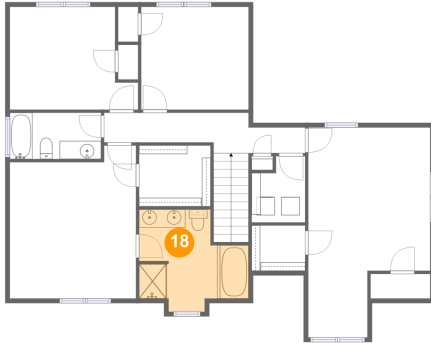
17 Floor 3 - Bedroom



Dimensions: 11'9" x 11'3"
Area: 133 sq. ft
Counted as living area: Yes

Heated: Yes
Finished: Yes
Enclosed: Yes
Contiguous: Yes
Permitted: Yes
Wet space: No
Addition: No
Conversion: No

18 Floor 3 - Primary Bath



Dimensions: 12'0" x 11'3"
Area: 105 sq. ft
Counted as living area: Yes

Heated: Yes
Finished: Yes
Enclosed: Yes
Contiguous: Yes
Permitted: Yes
Wet space: Yes
Addition: No
Conversion: No

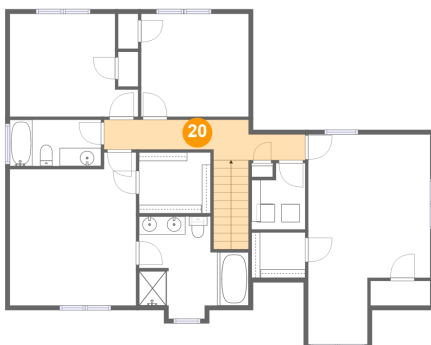
19 Floor 3 - W.I.C.



Dimensions: 7'10" x 6'8"
Area: 52 sq. ft
Counted as living area: Yes

Heated: Yes
Finished: Yes
Enclosed: Yes
Contiguous: Yes
Permitted: Yes
Wet space: No
Addition: No
Conversion: No

20 Floor 3 - Hall



Dimensions: 22'1" x 4'5"
Area: 111 sq. ft
Counted as living area: Yes

Heated: Yes
Finished: Yes
Enclosed: Yes
Contiguous: Yes
Permitted: Yes
Wet space: No
Addition: No
Conversion: No

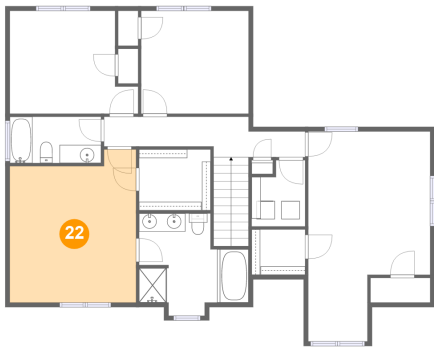
21 Floor 3 - Bedroom



Dimensions: 14'0" x 11'3"
Area: 138 sq. ft
Counted as living area: Yes

Heated: Yes
Finished: Yes
Enclosed: Yes
Contiguous: Yes
Permitted: Yes
Wet space: No
Addition: No
Conversion: No

22 Floor 3 - Primary Bedroom



Dimensions: 13'10" x 16'9"
Area: 213 sq. ft
Counted as living area: Yes

Heated: Yes
Finished: Yes
Enclosed: Yes
Contiguous: Yes
Permitted: Yes
Wet space: No
Addition: No
Conversion: No

23 Floor 3 - Bedroom



Dimensions: 13'4" x 23'0"
Area: 257 sq. ft
Counted as living area: Yes

Heated: Yes
Finished: Yes
Enclosed: Yes
Contiguous: Yes
Permitted: Yes
Wet space: No
Addition: No
Conversion: No