

177 John Neufeld Crescent, Peguis, Transcona, Winnipeg, Manitoba, Canada, R3W 0N1

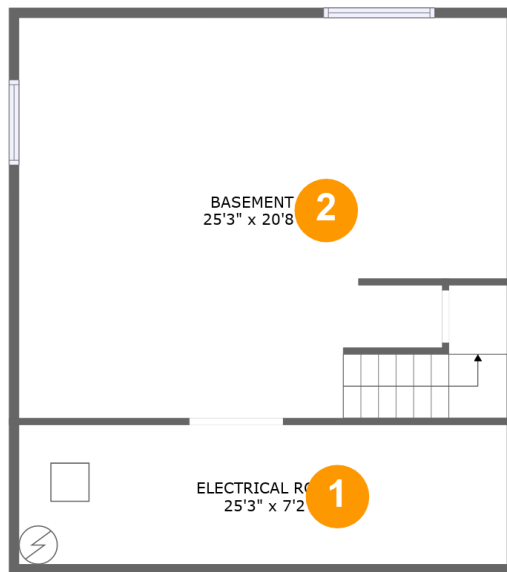


Property Summary

1 garages **3** bedrooms **2** bathrooms **1** half baths

3 floors **1,802** Gross Living Area sqft **3,059** total sqft

**177 John Neufeld Crescent, Peguis, Transcona,
Winnipeg, Manitoba, Canada, R3W 0N1**



Room Dimensions

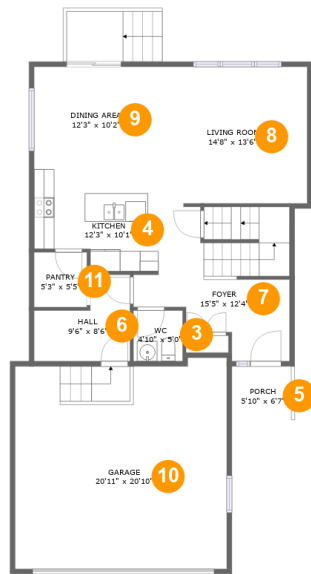
Floor 1

Total sqft: 767

Living area: 0

#	Room name	Dimensions	Area (sqft)	Counted as Living Area
1	Electrical Room	25'3" x 7'2"	182 sq. ft	No
2	Basement	25'3" x 20'8"	516 sq. ft	No

177 John Neufeld Crescent, Peguis, Transcona, Winnipeg, Manitoba, Canada, R3W 0N1



Room Dimensions

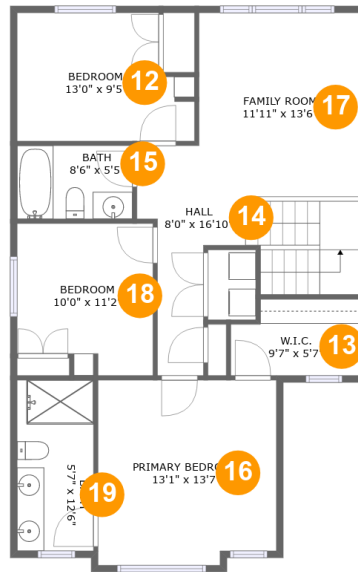
Floor 2

Total sqft: 1300

Living area: 810

#	Room name	Dimensions	Area (sqft)	Counted as Living Area
3	Wc	4'10" x 5'0"	24 sq. ft	Yes
4	Kitchen	12'3" x 10'1"	111 sq. ft	Yes
5	Porch	5'10" x 6'7"	37 sq. ft	No
6	Hall	9'6" x 8'6"	61 sq. ft	Yes
7	Foyer	15'5" x 12'4"	174 sq. ft	Yes
8	Living Room	14'8" x 13'6"	198 sq. ft	Yes
9	Dining Area	12'3" x 10'2"	124 sq. ft	Yes
10	Garage	20'11" x 20'10"	421 sq. ft	No
11	Pantry	5'3" x 5'5"	28 sq. ft	Yes

177 John Neufeld Crescent, Peguis, Transcona, Winnipeg, Manitoba, Canada, R3W 0N1



Room Dimensions

Floor 3

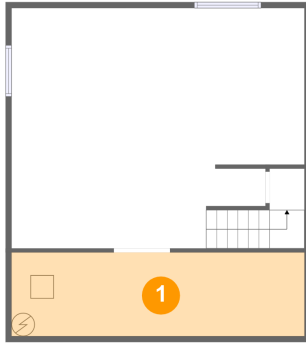
Total sqft: 992

Living area: 992

#	Room name	Dimensions	Area (sqft)	Counted as Living Area
12	Bedroom	13'0" x 9'5"	110 sq. ft	Yes
13	W.i.c.	9'7" x 5'7"	50 sq. ft	Yes
14	Hall	8'0" x 16'10"	132 sq. ft	Yes
15	Bath	8'6" x 5'5"	45 sq. ft	Yes
16	Primary Bedroom	13'1" x 13'7"	173 sq. ft	Yes
17	Family Room	11'11" x 13'6"	160 sq. ft	Yes
18	Bedroom	10'0" x 11'2"	104 sq. ft	Yes
19	Bath	5'7" x 12'6"	70 sq. ft	Yes

177 John Neufeld Crescent, Peguis, Transcona, Winnipeg, Manitoba, Canada, R3W 0N1

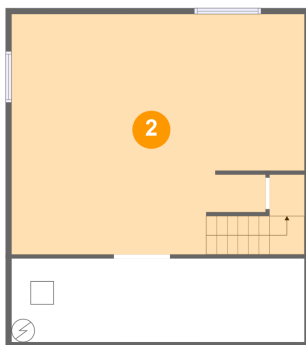
1 Floor 1 - Electrical Room



Dimensions: 25'3" x 7'2"
Area: 182 sq. ft
Counted as Living Area: No

Heated: No
Finished: No
Enclosed: Yes
Contiguous: Yes
Permitted: Yes
Wet Space: No
Addition: No
Conversion: No

2 Floor 1 - Basement



Dimensions: 25'3" x 20'8"
Area: 516 sq. ft
Counted as Living Area: No

Heated: No
Finished: Yes
Enclosed: Yes
Contiguous: Yes
Permitted: Yes
Wet Space: No
Addition: No
Conversion: No

177 John Neufeld Crescent, Peguis, Transcona, Winnipeg, Manitoba, Canada, R3W 0N1

3 Floor 2 - Wc



Dimensions: 4'10" x 5'0"
Area: 24 sq. ft
Counted as Living Area:
Yes

Heated: Yes
Finished: Yes
Enclosed: Yes
Contiguous:
Yes
Permitted: Yes
Wet Space: Yes
Addition: No
Conversion: No

4 Floor 2 - Kitchen



Dimensions: 12'3" x 10'1"
Area: 111 sq. ft
Counted as Living Area:
Yes

Heated: Yes
Finished: Yes
Enclosed: Yes
Contiguous:
Yes
Permitted: Yes
Wet Space: No
Addition: No
Conversion: No

5 Floor 2 - Porch

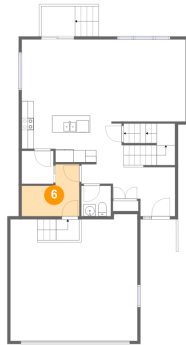


Dimensions: 5'10" x 6'7"
Area: 37 sq. ft
Counted as Living Area: No

Heated: No
Finished: Yes
Enclosed: No
Contiguous: Yes
Permitted: Yes
Wet Space: No
Addition: No
Conversion: No

177 John Neufeld Crescent, Peguis, Transcona, Winnipeg, Manitoba, Canada, R3W 0N1

6 Floor 2 - Hall



Dimensions: 9'6" x 8'6"
Area: 61 sq. ft
Counted as Living Area:
Yes

Heated: Yes
Finished: Yes
Enclosed: Yes
Contiguous:
Yes
Permitted: Yes
Wet Space: No
Addition: No
Conversion: No

7 Floor 2 - Foyer



Dimensions: 15'5" x 12'4"
Area: 174 sq. ft
Counted as Living Area:
Yes

Heated: Yes
Finished: Yes
Enclosed: Yes
Contiguous:
Yes
Permitted: Yes
Wet Space: No
Addition: No
Conversion: No

8 Floor 2 - Living Room



Dimensions: 14'8" x 13'6"
Area: 198 sq. ft
Counted as Living Area:
Yes

Heated: Yes
Finished: Yes
Enclosed: Yes
Contiguous:
Yes
Permitted: Yes
Wet Space: No
Addition: No
Conversion: No

177 John Neufeld Crescent, Peguis, Transcona, Winnipeg, Manitoba, Canada, R3W 0N1

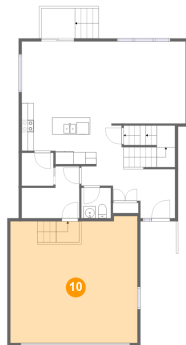
9 Floor 2 - Dining Area



Dimensions: 12'3" x 10'2"
Area: 124 sq. ft
Counted as Living Area:
Yes

Heated: Yes
Finished: Yes
Enclosed: Yes
Contiguous:
Yes
Permitted: Yes
Wet Space: No
Addition: No
Conversion: No

10 Floor 2 - Garage



Dimensions: 20'11" x 20'10"
Area: 421 sq. ft
Counted as Living Area: No

Heated: No
Finished: No
Enclosed: Yes
Contiguous: Yes
Permitted: Yes
Wet Space: No
Addition: No
Conversion: No

11 Floor 2 - Pantry



Dimensions: 5'3" x 5'5"
Area: 28 sq. ft
Counted as Living Area:
Yes

Heated: Yes
Finished: Yes
Enclosed: Yes
Contiguous:
Yes
Permitted: Yes
Wet Space: No
Addition: No
Conversion: No

177 John Neufeld Crescent, Peguis, Transcona, Winnipeg, Manitoba, Canada, R3W 0N1

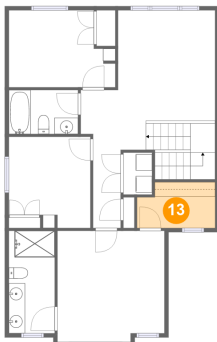
12 Floor 3 - Bedroom



Dimensions: 13'0" x 9'5"
Area: 110 sq. ft
Counted as Living Area:
Yes

Heated: Yes
Finished: Yes
Enclosed: Yes
Contiguous:
Yes
Permitted: Yes
Wet Space: No
Addition: No
Conversion: No

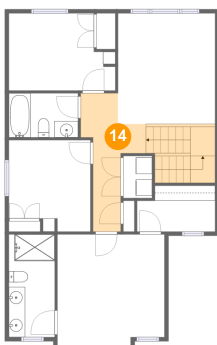
13 Floor 3 - W.i.c.



Dimensions: 9'7" x 5'7"
Area: 50 sq. ft
Counted as Living Area:
Yes

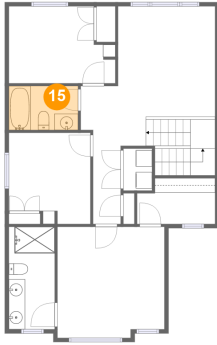
Heated: Yes
Finished: Yes
Enclosed: Yes
Contiguous:
Yes
Permitted: Yes
Wet Space: No
Addition: No
Conversion: No

14 Floor 3 - Hall



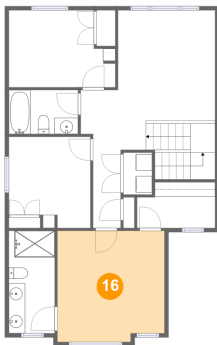
Dimensions: 8'0" x 16'10"
Area: 132 sq. ft
Counted as Living Area:
Yes

Heated: Yes
Finished: Yes
Enclosed: Yes
Contiguous:
Yes
Permitted: Yes
Wet Space: No
Addition: No
Conversion: No

**177 John Neufeld Crescent, Peguis, Transcona,
Winnipeg, Manitoba, Canada, R3W 0N1****15 Floor 3 - Bath**

Dimensions: 8'6" x 5'5"
Area: 45 sq. ft
Counted as Living Area:
Yes

Heated: Yes
Finished: Yes
Enclosed: Yes
Contiguous:
Yes
Permitted: Yes
Wet Space: Yes
Addition: No
Conversion: No

16 Floor 3 - Primary Bedroom

Dimensions: 13'1" x 13'7"
Area: 173 sq. ft
Counted as Living Area:
Yes

Heated: Yes
Finished: Yes
Enclosed: Yes
Contiguous:
Yes
Permitted: Yes
Wet Space: No
Addition: No
Conversion: No

17 Floor 3 - Family Room

Dimensions: 11'11" x 13'6"
Area: 160 sq. ft
Counted as Living Area:
Yes

Heated: Yes
Finished: Yes
Enclosed: Yes
Contiguous:
Yes
Permitted: Yes
Wet Space: No
Addition: No
Conversion: No

177 John Neufeld Crescent, Peguis, Transcona, Winnipeg, Manitoba, Canada, R3W 0N1

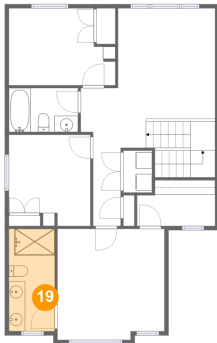
18 Floor 3 - Bedroom



Dimensions: 10'0" x 11'2"
Area: 104 sq. ft
Counted as Living Area:
Yes

Heated: Yes
Finished: Yes
Enclosed: Yes
Contiguous:
Yes
Permitted: Yes
Wet Space: No
Addition: No
Conversion: No

19 Floor 3 - Bath



Dimensions: 5'7" x 12'6"
Area: 70 sq. ft
Counted as Living Area:
Yes

Heated: Yes
Finished: Yes
Enclosed: Yes
Contiguous:
Yes
Permitted: Yes
Wet Space: Yes
Addition: No
Conversion: No