



Home report


1920 Brighton Dam Road, Sunnymeade, Brookeville,
Montgomery County, Maryland, United States, 20833




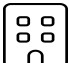
Property summary


 **0** Garages


 **3** Bedrooms

 **2** Bathrooms

 **1** Half baths

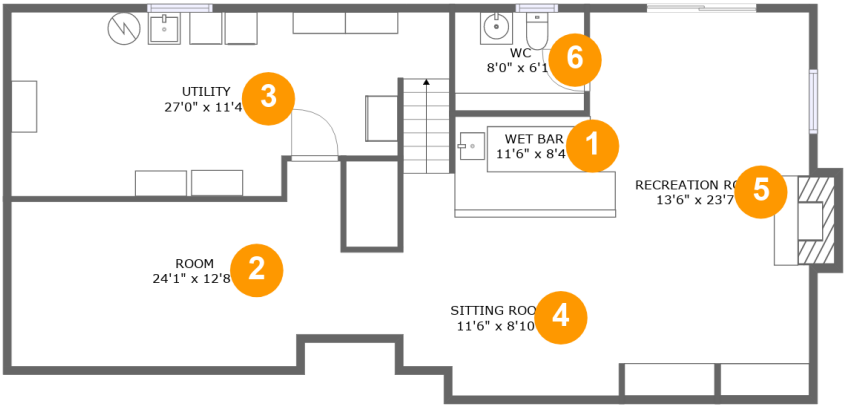
 **2** Floors

 **2,747** Gross living area sqft

 **3,312** Total sqft

Home report

1920 Brighton Dam Road, Sunnymeade, Brookeville,
Montgomery County, Maryland, United States, 20833



Room dimensions

Floor 1 Total sqft: 1183 Living area: 889

#		Dimensions	sqft	Counted as living area
1	Wet Bar	11'6" x 8'4"	102 sq. ft	Yes
2	Room	24'1" x 12'8"	228 sq. ft	Yes
3	Utility	27'0" x 11'4"	264 sq. ft	No
4	Sitting Room	11'6" x 8'10"	96 sq. ft	Yes
5	Recreation Room	13'6" x 23'7"	326 sq. ft	Yes
6	WC	8'0" x 6'1"	48 sq. ft	Yes

Home report

1920 Brighton Dam Road, Sunnymeade, Brookeville,
Montgomery County, Maryland, United States, 20833



Room dimensions

Floor 2 Total sqft: 2129 Living area: 1858

#		Dimensions	sqft	Counted as living area
7	Covered Deck	23'5" x 13'4"	271 sq. ft	No
8	Bath	7'8" x 4'4"	33 sq. ft	Yes
9	Foyer	5'0" x 8'5"	42 sq. ft	Yes
10	Eat-in Kitchen	12'5" x 13'3"	159 sq. ft	Yes
11	Bedroom	10'8" x 10'2"	109 sq. ft	Yes
12	Bedroom	10'1" x 13'7"	137 sq. ft	Yes
13	Hall	18'4" x 3'1"	56 sq. ft	Yes
14	Bath	4'9" x 8'7"	41 sq. ft	Yes
15	Living Room	20'4" x 11'9"	240 sq. ft	Yes
16	Dining Room	14'2" x 13'3"	156 sq. ft	Yes
17	Primary Bedroom	13'10" x 13'3"	183 sq. ft	Yes

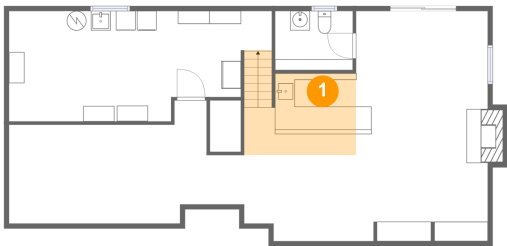
Home report

1920 Brighton Dam Road, Sunnymeade, Brookeville,
Montgomery County, Maryland, United States, 20833

#		Dimensions	sqft	Counted as living area
18	Family Room	22'0" x 20'9"	457 sq. ft	Yes

1920 Brighton Dam Road, Sunnymeade, Brookeville,
Montgomery County, Maryland, United States, 20833

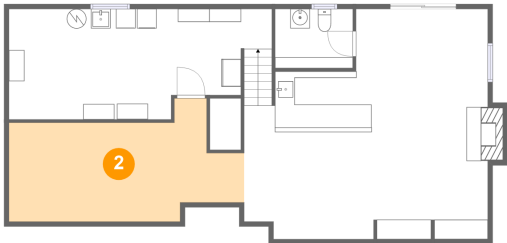
1 Floor 1 - Wet Bar



Dimensions: 11'6" x 8'4"
Area: 102 sq. ft
Counted as living area: Yes

Heated: Yes
Finished: Yes
Enclosed: Yes
Contiguous: Yes
Permitted: Yes
Wet space: No
Addition: No
Conversion: No

2 Floor 1 - Room



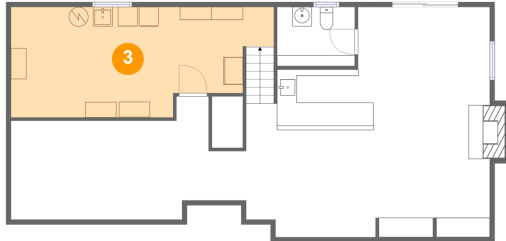
Dimensions: 24'1" x 12'8"
Area: 228 sq. ft
Counted as living area: Yes

Heated: Yes
Finished: Yes
Enclosed: Yes
Contiguous: Yes
Permitted: Yes
Wet space: No
Addition: No
Conversion: No

Home report

1920 Brighton Dam Road, Sunnymeade, Brookeville,
Montgomery County, Maryland, United States, 20833

3 Floor 1 - Utility



Dimensions: 27'0" x 11'4"
Area: 264 sq. ft
Counted as living area: No

Heated: Yes
Finished: No
Enclosed: Yes
Contiguous: Yes
Permitted: Yes
Wet space: No
Addition: No
Conversion: No

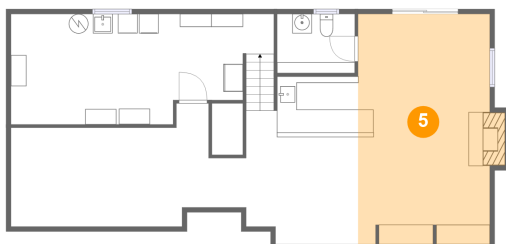
4 Floor 1 - Sitting Room



Dimensions: 11'6" x 8'10"
Area: 96 sq. ft
Counted as living area: Yes

Heated: Yes
Finished: Yes
Enclosed: Yes
Contiguous: Yes
Permitted: Yes
Wet space: No
Addition: No
Conversion: No

5 Floor 1 - Recreation Room



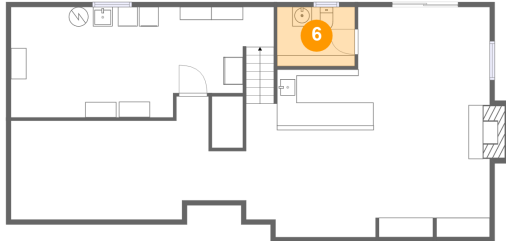
Dimensions: 13'6" x 23'7"
Area: 326 sq. ft
Counted as living area: Yes

Heated: Yes
Finished: Yes
Enclosed: Yes
Contiguous: Yes
Permitted: Yes
Wet space: No
Addition: No
Conversion: No

Home report

1920 Brighton Dam Road, Sunnymeade, Brookeville,
Montgomery County, Maryland, United States, 20833

6 Floor 1 - WC



Dimensions: 8'0" x 6'1"
Area: 48 sq. ft
Counted as living area: Yes

Heated: Yes
Finished: Yes
Enclosed: Yes
Contiguous: Yes
Permitted: Yes
Wet space: Yes
Addition: No
Conversion: No

7 Floor 2 - Covered Deck



Dimensions: 23'5" x 13'4"
Area: 271 sq. ft
Counted as living area: No

Heated: No
Finished: Yes
Enclosed: No
Contiguous: Yes
Permitted: Yes
Wet space: No
Addition: No
Conversion: No

8 Floor 2 - Bath



Dimensions: 7'8" x 4'4"
Area: 33 sq. ft
Counted as living area: Yes

Heated: Yes
Finished: Yes
Enclosed: Yes
Contiguous: Yes
Permitted: Yes
Wet space: Yes
Addition: No
Conversion: No

Home report

1920 Brighton Dam Road, Sunnymeade, Brookeville,
Montgomery County, Maryland, United States, 20833

9 Floor 2 - Foyer



Dimensions: 5'0" x 8'5"
Area: 42 sq. ft
Counted as living area: Yes

Heated: Yes
Finished: Yes
Enclosed: Yes
Contiguous: Yes
Permitted: Yes
Wet space: No
Addition: No
Conversion: No

10 Floor 2 - Eat-in Kitchen



Dimensions: 12'5" x 13'3"
Area: 159 sq. ft
Counted as living area: Yes

Heated: Yes
Finished: Yes
Enclosed: Yes
Contiguous: Yes
Permitted: Yes
Wet space: No
Addition: No
Conversion: No

11 Floor 2 - Bedroom



Dimensions: 10'8" x 10'2"
Area: 109 sq. ft
Counted as living area: Yes

Heated: Yes
Finished: Yes
Enclosed: Yes
Contiguous: Yes
Permitted: Yes
Wet space: No
Addition: No
Conversion: No

Home report

1920 Brighton Dam Road, Sunnymeade, Brookeville,
Montgomery County, Maryland, United States, 20833

12 Floor 2 - Bedroom



Dimensions: 10'1" x 13'7"
Area: 137 sq. ft
Counted as living area: Yes

Heated: Yes
Finished: Yes
Enclosed: Yes
Contiguous: Yes
Permitted: Yes
Wet space: No
Addition: No
Conversion: No

13 Floor 2 - Hall



Dimensions: 18'4" x 3'1"
Area: 56 sq. ft
Counted as living area: Yes

Heated: Yes
Finished: Yes
Enclosed: Yes
Contiguous: Yes
Permitted: Yes
Wet space: No
Addition: No
Conversion: No

14 Floor 2 - Bath



Dimensions: 4'9" x 8'7"
Area: 41 sq. ft
Counted as living area: Yes

Heated: Yes
Finished: Yes
Enclosed: Yes
Contiguous: Yes
Permitted: Yes
Wet space: Yes
Addition: No
Conversion: No

Home report

1920 Brighton Dam Road, Sunnymeade, Brookeville,
Montgomery County, Maryland, United States, 20833

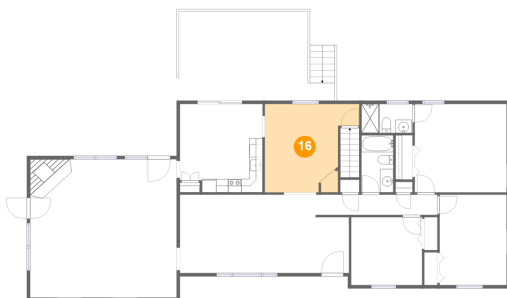
15 Floor 2 - Living Room



Dimensions: 20'4" x 11'9"
Area: 240 sq. ft
Counted as living area: Yes

Heated: Yes
Finished: Yes
Enclosed: Yes
Contiguous: Yes
Permitted: Yes
Wet space: No
Addition: No
Conversion: No

16 Floor 2 - Dining Room



Dimensions: 14'2" x 13'3"
Area: 156 sq. ft
Counted as living area: Yes

Heated: Yes
Finished: Yes
Enclosed: Yes
Contiguous: Yes
Permitted: Yes
Wet space: No
Addition: No
Conversion: No

17 Floor 2 - Primary Bedroom



Dimensions: 13'10" x 13'3"
Area: 183 sq. ft
Counted as living area: Yes

Heated: Yes
Finished: Yes
Enclosed: Yes
Contiguous: Yes
Permitted: Yes
Wet space: No
Addition: No
Conversion: No

1920 Brighton Dam Road, Sunnymeade, Brookeville,
Montgomery County, Maryland, United States, 20833

18 Floor 2 - Family Room



Dimensions: 22'0" x 20'9"
Area: 457 sq. ft
Counted as living area: Yes

Heated: Yes
Finished: Yes
Enclosed: Yes
Contiguous: Yes
Permitted: Yes
Wet space: No
Addition: No
Conversion: No