



Home report


1904 Glenwood Drive Southwest, Hartselle, Morgan County, Alabama, United States, 35640




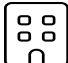
Property summary


 **1** Garages


 **3** Bedrooms

 **2** Bathrooms

 **0** Half baths

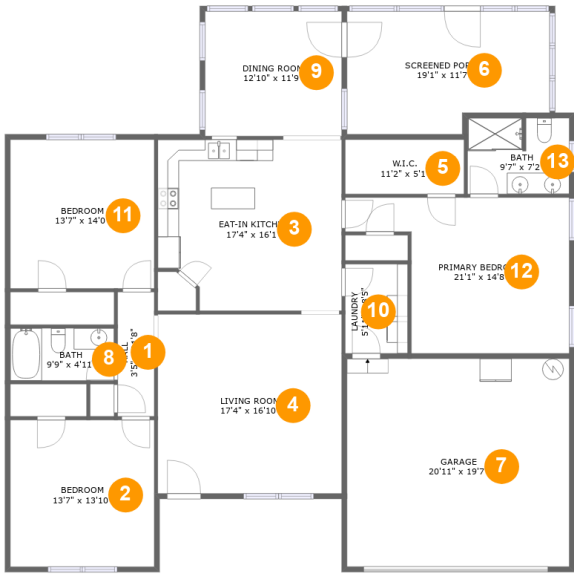
 **1** Floors

 **1,846** Gross living area sqft

 **2,498** Total sqft

Home report

1904 Glenwood Drive Southwest, Hartselle, Morgan County,  
Alabama, United States, 35640



Room dimensions

Floor 1 Total sqft: 2498    Living area: 1846

#		Dimensions	sqft	Counted as living area
1	Hall	3'5" x 11'8"	40 sq. ft	Yes
2	Bedroom	13'7" x 13'10"	187 sq. ft	Yes
3	Eat-in Kitchen	17'4" x 16'1"	265 sq. ft	Yes
4	Living Room	17'4" x 16'10"	292 sq. ft	Yes
5	W.I.C.	11'2" x 5'1"	57 sq. ft	Yes
6	Screened Porch	19'1" x 11'7"	204 sq. ft	No
7	Garage	20'11" x 19'7"	409 sq. ft	No
8	Bath	9'9" x 4'11"	48 sq. ft	Yes
9	Dining Room	12'10" x 11'9"	152 sq. ft	Yes
10	Laundry	5'11" x 8'5"	50 sq. ft	Yes
11	Bedroom	13'7" x 14'0"	190 sq. ft	Yes

Home report

1904 Glenwood Drive Southwest, Hartselle, Morgan County,  
Alabama, United States, 35640

#		Dimensions	sqft	Counted as living area
12	Primary Bedroom	21'1" x 14'8"	238 sq. ft	Yes
13	Bath	9'7" x 7'2"	67 sq. ft	Yes

1904 Glenwood Drive Southwest, Hartselle, Morgan County,  
Alabama, United States, 35640

1 Floor 1 - Hall



Dimensions: 3'5" x 11'8"  
Area: 40 sq. ft  
Counted as living area: Yes

Heated: Yes  
Finished: Yes  
Enclosed: Yes  
Contiguous: Yes  
Permitted: Yes  
Wet space: No  
Addition: No  
Conversion: No

2 Floor 1 - Bedroom



Dimensions: 13'7" x 13'10"  
Area: 187 sq. ft  
Counted as living area: Yes

Heated: Yes  
Finished: Yes  
Enclosed: Yes  
Contiguous: Yes  
Permitted: Yes  
Wet space: No  
Addition: No  
Conversion: No

1904 Glenwood Drive Southwest, Hartselle, Morgan County,  
Alabama, United States, 35640

### 3 Floor 1 - Eat-in Kitchen



Dimensions: 17'4" x 16'1"  
Area: 265 sq. ft  
Counted as living area: Yes

Heated: Yes  
Finished: Yes  
Enclosed: Yes  
Contiguous: Yes  
Permitted: Yes  
Wet space: No  
Addition: No  
Conversion: No

### 4 Floor 1 - Living Room



Dimensions: 17'4" x 16'10"  
Area: 292 sq. ft  
Counted as living area: Yes

Heated: Yes  
Finished: Yes  
Enclosed: Yes  
Contiguous: Yes  
Permitted: Yes  
Wet space: No  
Addition: No  
Conversion: No

### 5 Floor 1 - W.I.C.



Dimensions: 11'2" x 5'1"  
Area: 57 sq. ft  
Counted as living area: Yes

Heated: Yes  
Finished: Yes  
Enclosed: Yes  
Contiguous: Yes  
Permitted: Yes  
Wet space: No  
Addition: No  
Conversion: No

1904 Glenwood Drive Southwest, Hartselle, Morgan County,  
Alabama, United States, 35640

## 6 Floor 1 - Screened Porch



Dimensions: 19'1" x 11'7"  
Area: 204 sq. ft  
Counted as living area: No

Heated: No  
Finished: Yes  
Enclosed: No  
Contiguous: Yes  
Permitted: Yes  
Wet space: No  
Addition: No  
Conversion: No

## 7 Floor 1 - Garage



Dimensions: 20'11" x 19'7"  
Area: 409 sq. ft  
Counted as living area: No

Heated: No  
Finished: No  
Enclosed: Yes  
Contiguous: Yes  
Permitted: Yes  
Wet space: No  
Addition: No  
Conversion: No

## 8 Floor 1 - Bath



Dimensions: 9'9" x 4'11"  
Area: 48 sq. ft  
Counted as living area: Yes

Heated: Yes  
Finished: Yes  
Enclosed: Yes  
Contiguous: Yes  
Permitted: Yes  
Wet space: Yes  
Addition: No  
Conversion: No

1904 Glenwood Drive Southwest, Hartselle, Morgan County,  
Alabama, United States, 35640

## 9 Floor 1 - Dining Room



Dimensions: 12'10" x 11'9"  
Area: 152 sq. ft  
Counted as living area: Yes

Heated: Yes  
Finished: Yes  
Enclosed: Yes  
Contiguous: Yes  
Permitted: Yes  
Wet space: No  
Addition: No  
Conversion: No

## 10 Floor 1 - Laundry



Dimensions: 5'11" x 8'5"  
Area: 50 sq. ft  
Counted as living area: Yes

Heated: Yes  
Finished: Yes  
Enclosed: Yes  
Contiguous: Yes  
Permitted: Yes  
Wet space: No  
Addition: No  
Conversion: No

## 11 Floor 1 - Bedroom

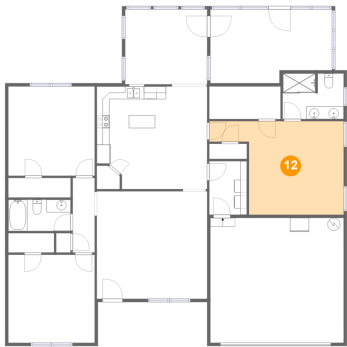


Dimensions: 13'7" x 14'0"  
Area: 190 sq. ft  
Counted as living area: Yes

Heated: Yes  
Finished: Yes  
Enclosed: Yes  
Contiguous: Yes  
Permitted: Yes  
Wet space: No  
Addition: No  
Conversion: No

1904 Glenwood Drive Southwest, Hartselle, Morgan County,  
Alabama, United States, 35640

12 Floor 1 - Primary Bedroom



Dimensions: 21'1" x 14'8"  
Area: 238 sq. ft  
Counted as living area: Yes

Heated: Yes  
Finished: Yes  
Enclosed: Yes  
Contiguous: Yes  
Permitted: Yes  
Wet space: No  
Addition: No  
Conversion: No

13 Floor 1 - Bath



Dimensions: 9'7" x 7'2"  
Area: 67 sq. ft  
Counted as living area: Yes

Heated: Yes  
Finished: Yes  
Enclosed: Yes  
Contiguous: Yes  
Permitted: Yes  
Wet space: Yes  
Addition: No  
Conversion: No