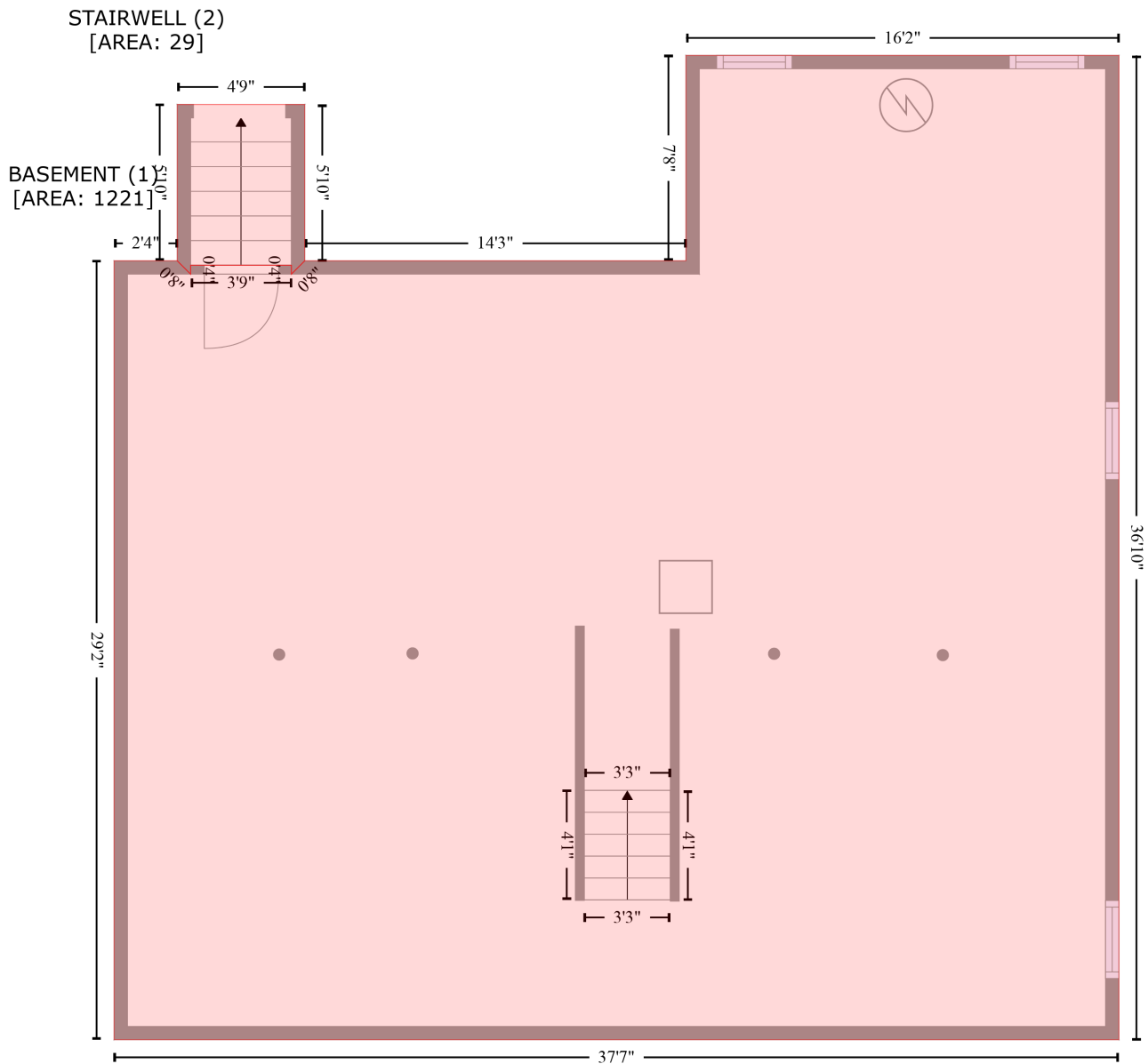


49-B North Ave, Mendon Massachusetts United States

Gross Living Area: 2888 sq. ft



Space	Area (sq. ft)	Calculation <small>Coordinate Polygon Area Algorithm using inches</small>
BASEMENT (Non-living area)	1221	$-((604.5 + 604.5) * (146.8 - 589.1) + (604.5 + 153.2) * (589.1 - 589.1) + (153.2 + 153.2) * (589.1 - 239.1) + (153.2 + 181.5) * (239.1 - 239.1) + (181.5 + 187.5) * (239.1 - 245.1) + (187.5 + 187.5) * (245.1 - 241.1) + (187.5 + 232.8) * (241.1 - 241.1) + (232.8 + 232.8) * (241.1 - 245.1) + (232.8 + 238.8) * (245.1 - 239.1) + (238.8 + 410) * (239.1 - 239.1) + (410 + 410) * (239.1 - 146.8) + (410 + 604.5) * (146.8 - 146.8)) * 0.5 * 0.00694$
STAIRWELL	29	$-((238.8 + 238.8) * (168.8 - 239.1) + (238.8 + 232.8) * (239.1 - 245.1) + (232.8 + 232.8) * (245.1 -$

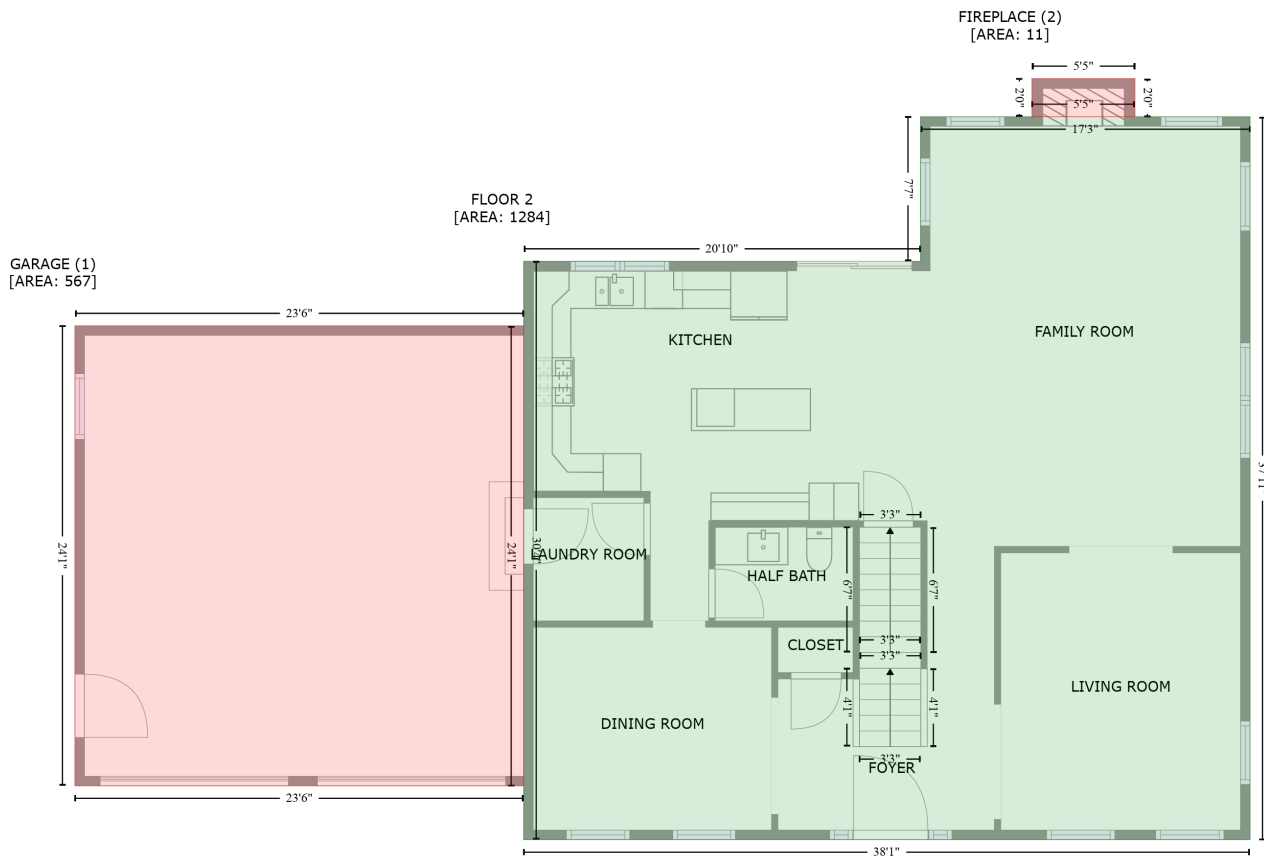
49-B North Ave, Mendon Massachusetts United States

Gross Living Area: 2888 sq. ft

Space	Area (sq. ft)	Calculation <small>Coordinate Polygon Area Algorithm using inches</small>
(Non-living area)		$\frac{(241.1 + (232.8 + 187.5) * (241.1 - 241.1) + (187.5 + 187.5) * (241.1 - 245.1) + (187.5 + 181.5) * (245.1 - 239.1) + (181.5 + 181.5) * (239.1 - 168.8) + (181.5 + 238.8) * (168.8 - 168.8)) * 0.5}{144}$

49-B North Ave, Mendon Massachusetts United States

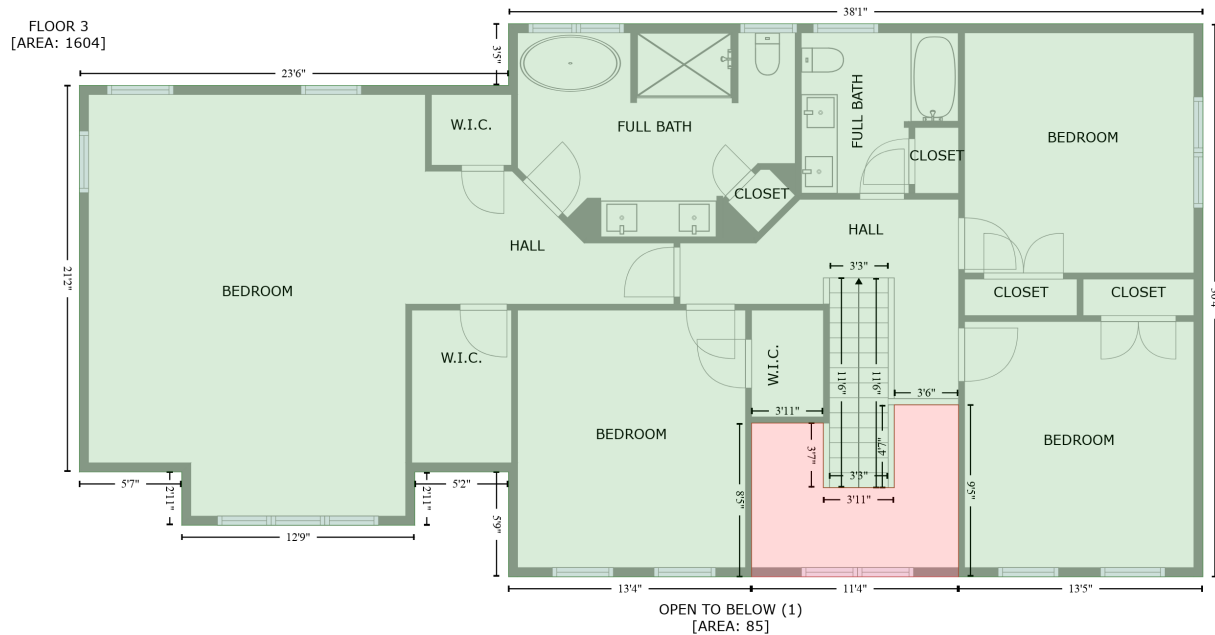
Gross Living Area: 2888 sq. ft



Space	Area (sq. ft)	Calculation
FLOOR 2 (Living area)	1284	$-\left(\left(622.9 + 622.9\right) * \left(123.9 - 578.4\right) + \left(622.9 + 166.1\right) * \left(578.4 - 578.4\right) + \left(166.1 + 166.1\right) * \left(578.4 - 214.8\right) + \left(166.1 + 415.7\right) * \left(214.8 - 214.8\right) + \left(415.7 + 415.7\right) * \left(214.8 - 123.9\right) + \left(415.7 + 622.9\right) * \left(123.9 - 123.9\right)\right) * 0.5 * 0.00694$
GARAGE (Non-living area)	567	$-\left(\left(166.1 + 166.1\right) * \left(255.4 - 544.6\right) + \left(166.1 + -116.2\right) * \left(544.6 - 544.6\right) + \left(-116.2 + -116.2\right) * \left(544.6 - 255.4\right) + \left(-116.2 + 166.1\right) * \left(255.4 - 255.4\right)\right) * 0.5 * 0.00694$
FIREPLACE (Non-living area)	11	$-\left(\left(550.5 + 550.5\right) * \left(100 - 123.9\right) + \left(550.5 + 485.8\right) * \left(123.9 - 123.9\right) + \left(485.8 + 485.8\right) * \left(123.9 - 100\right) + \left(485.8 + 550.5\right) * \left(100 - 100\right)\right) * 0.5 * 0.00694$

49-B North Ave, Mendon Massachusetts United States

Gross Living Area: 2888 sq. ft



Space	Area (sq. ft)	Calculation <small>Coordinate Polygon Area Algorithm using inches</small>
FLOOR 3 (Living area)	1604	$-\left((624.1 + 624.1) * (216 - 579.6) + (624.1 + 463.4) * (579.6 - 579.6) + (463.4 + 463.4) * (579.6 - 466.5) + (463.4 + 421.1) * (466.5 - 466.5) + (421.1 + 421.1) * (466.5 - 521.1) + (421.1 + 374.4) * (521.1 - 521.1) + (374.4 + 374.4) * (521.1 - 478.5) + (374.4 + 327.2) * (478.5 - 478.5) + (327.2 + 327.2) * (478.5 - 579.6) + (327.2 + 167.3) * (579.6 - 579.6) + (167.3 + 167.3) * (579.6 - 510.7) + (167.3 + 105.6) * (510.7 - 510.7) + (105.6 + 105.6) * (510.7 - 545.7) + (105.6 + -47.7) * (545.7 - 545.7) + (-47.7 + -47.7) * (545.7 - 510.7) + (-47.7 + -115) * (510.7 - 510.7) + (-115 + -115) * (510.7 - 256.6) + (-115 + 167.3) * (256.6 - 256.6) + (167.3 + 167.3) * (256.6 - 216) + (167.3 + 624.1) * (216 - 216)\right) * 0.5 * 0.00694$
OPEN TO BELOW (Non-living area)	85	$-\left((463.4 + 463.4) * (466.5 - 579.6) + (463.4 + 327.2) * (579.6 - 579.6) + (327.2 + 327.2) * (579.6 - 478.5) + (327.2 + 374.4) * (478.5 - 478.5) + (374.4 + 374.4) * (478.5 - 521.1) + (374.4 + 421.1) * (521.1 - 521.1) + (421.1 + 421.1) * (521.1 - 466.5) + (421.1 + 463.4) * (466.5 - 466.5)\right) * 0.5 * 0.00694$