

Home report

323 North Balph Avenue, Ross Township, Pittsburgh, Allegheny County, Pennsylvania, United States, 15202

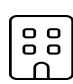



Total Area: 1825 sq. ft


Below Ground: 0 sq. ft, Floor 2: 783 sq. ft, Floor 3: 725 sq. ft, Floor 4: 317 sq. ft

Excluded: Basement 659 sq. ft, Carport 261 sq. ft, Outdoor Porch 185 sq. ft, Outdoor Deck 34 sq. ft, Low Ceiling 181 sq. ft, Walls: 225 sq. ft

Property summary

**4** Floors

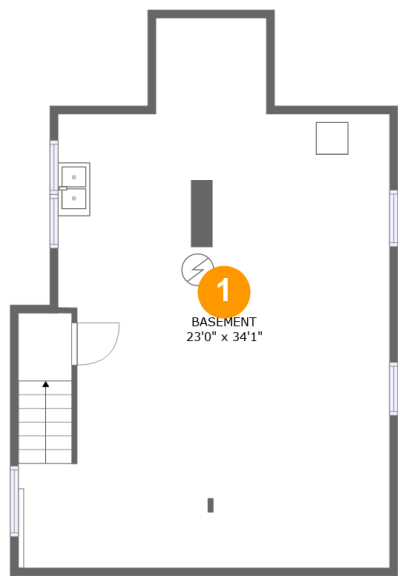
**4** Bedrooms

**2** Bathrooms

**1** Half baths

Home report

323 North Balph Avenue, Ross Township, Pittsburgh, Allegheny County, Pennsylvania, United States, 15202



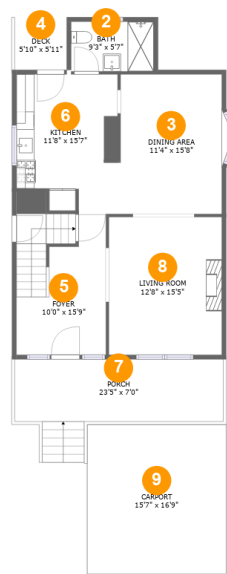
Room dimensions

Floor 1 Below ground Total:0sqft Excluded: 659sqft

#		Max Dimensions	sqft	Included
1	Basement	23'0" x 34'1"	655 sq. ft	No

Home report

323 North Balph Avenue, Ross Township, Pittsburgh, Allegheny County, Pennsylvania, United States, 15202



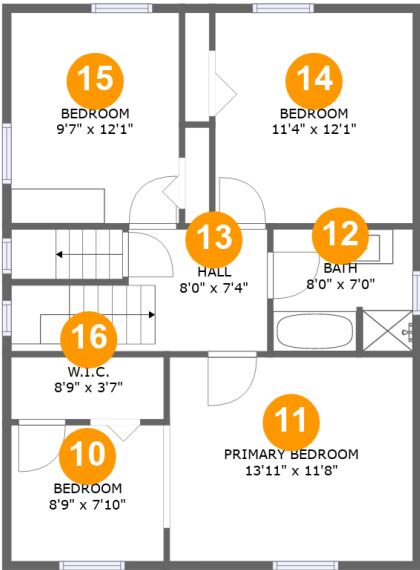
Room dimensions

Floor 2 Total:783sqft Excluded: 480sqft

#		Max Dimensions	sqft	Included
2	Bath	9'3" x 5'7"	52 sq. ft	Yes
3	Dining Area	11'4" x 15'8"	182 sq. ft	Yes
4	Deck	5'10" x 5'11"	34 sq. ft	No
5	Foyer	10'0" x 15'9"	164 sq. ft	Yes
6	Kitchen	11'8" x 15'7"	166 sq. ft	Yes
7	Porch	23'5" x 7'0"	185 sq. ft	No
8	Living Room	12'8" x 15'5"	196 sq. ft	Yes
9	Carport	15'7" x 16'9"	261 sq. ft	No

Home report

323 North Balph Avenue, Ross Township, Pittsburgh, Allegheny County, Pennsylvania, United States, 15202



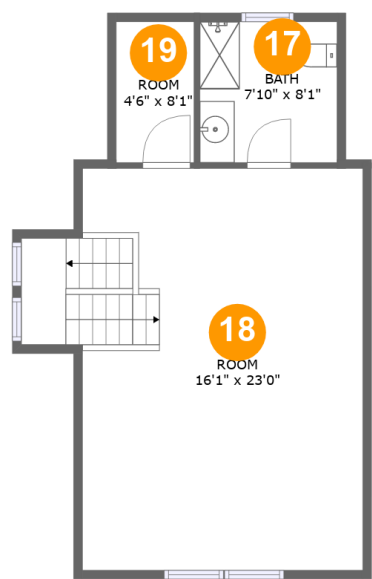
Room dimensions

Floor 3 Total:725sqft Excluded: 0sqft

#		Max Dimensions	sqft	Included
10	Bedroom	8'9" x 7'10"	68 sq. ft	Yes
11	Primary Bedroom	13'11" x 11'8"	163 sq. ft	Yes
12	Bath	8'0" x 7'0"	55 sq. ft	Yes
13	Hall	8'0" x 7'4"	105 sq. ft	Yes
14	Bedroom	11'4" x 12'1"	137 sq. ft	Yes
15	Bedroom	9'7" x 12'1"	116 sq. ft	Yes
16	W.I.C.	8'9" x 3'7"	31 sq. ft	Yes

Home report

323 North Balph Avenue, Ross Township, Pittsburgh, Allegheny County, Pennsylvania, United States, 15202



Room dimensions

Floor 4 Total:317sqft Excluded: 181sqft

#		Max Dimensions	sqft	Included
17	Bath	7'10" x 8'1"	46 sq. ft	Yes
18	Room	16'1" x 23'0"	244 sq. ft	Yes
19	Room	4'6" x 8'1"	20 sq. ft	Yes

1 Floor 1 - Basement



Max Dimensions: 23'0" x 34'1"
Calculated Area: 655 sq. ft
Included: No

Heated: Yes
Finished: No
Enclosed: Yes
Contiguous: Yes
Permitted: Yes
Wet space: No
Addition: No
Conversion: No

2 Floor 2 - Bath



Max Dimensions: 9'3" x 5'7"
Calculated Area: 52 sq. ft
Included: Yes

Heated: Yes
Finished: Yes
Enclosed: Yes
Contiguous: Yes
Permitted: Yes
Wet space: Yes
Addition: No
Conversion: No

3 Floor 2 - Dining Area



Max Dimensions: 11'4" x 15'8"
Calculated Area: 182 sq. ft
Included: Yes

Heated: Yes
Finished: Yes
Enclosed: Yes
Contiguous: Yes
Permitted: Yes
Wet space: No
Addition: No
Conversion: No

4 Floor 2 - Deck



Max Dimensions: 5'10" x 5'11"
Calculated Area: 34 sq. ft
Included: No

Heated: No
Finished: Yes
Enclosed: No
Contiguous: Yes
Permitted: Yes
Wet space: No
Addition: No
Conversion: No

5 Floor 2 - Foyer



Max Dimensions: 10'0" x 15'9"
Calculated Area: 164 sq. ft
Included: Yes

Heated: Yes
Finished: Yes
Enclosed: Yes
Contiguous: Yes
Permitted: Yes
Wet space: No
Addition: No
Conversion: No

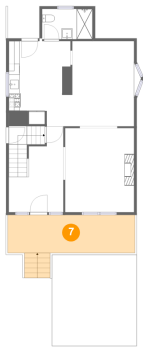
6 Floor 2 - Kitchen



Max Dimensions: 11'8" x 15'7"
Calculated Area: 166 sq. ft
Included: Yes

Heated: Yes
Finished: Yes
Enclosed: Yes
Contiguous: Yes
Permitted: Yes
Wet space: No
Addition: No
Conversion: No

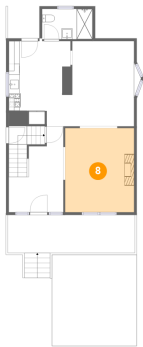
7 Floor 2 - Porch



Max Dimensions: 23'5" x 7'0"
Calculated Area: 185 sq. ft
Included: No

Heated: No
Finished: Yes
Enclosed: No
Contiguous: Yes
Permitted: Yes
Wet space: No
Addition: No
Conversion: No

8 Floor 2 - Living Room



Max Dimensions: 12'8" x 15'5"
Calculated Area: 196 sq. ft
Included: Yes

Heated: Yes
Finished: Yes
Enclosed: Yes
Contiguous: Yes
Permitted: Yes
Wet space: No
Addition: No
Conversion: No

323 North Balph Avenue, Ross Township, Pittsburgh, Allegheny County, Pennsylvania, United States, 15202

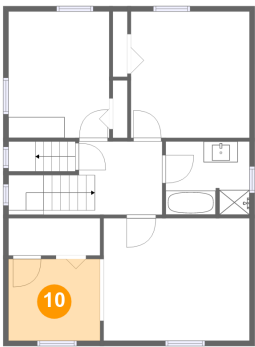
9 Floor 2 - Carport



Max Dimensions: 15'7" x 16'9"
Calculated Area: 261 sq. ft
Included: No

Heated: No
Finished: Yes
Enclosed: No
Contiguous: Yes
Permitted: Yes
Wet space: No
Addition: No
Conversion: No

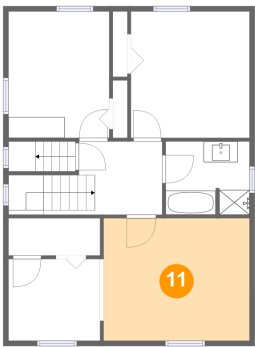
10 Floor 3 - Bedroom



Max Dimensions: 8'9" x 7'10"
Calculated Area: 68 sq. ft
Included: Yes

Heated: Yes
Finished: Yes
Enclosed: Yes
Contiguous: Yes
Permitted: Yes
Wet space: No
Addition: No
Conversion: No

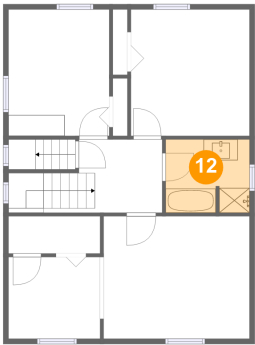
11 Floor 3 - Primary Bedroom



Max Dimensions: 13'11" x 11'8"
Calculated Area: 163 sq. ft
Included: Yes

Heated: Yes
Finished: Yes
Enclosed: Yes
Contiguous: Yes
Permitted: Yes
Wet space: No
Addition: No
Conversion: No

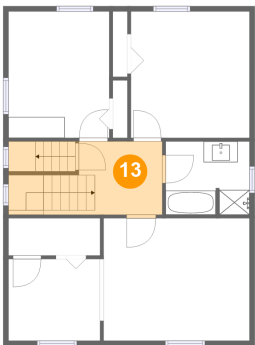
12 Floor 3 - Bath



Max Dimensions: 8'0" x 7'0"
Calculated Area: 55 sq. ft
Included: Yes

Heated: Yes
Finished: Yes
Enclosed: Yes
Contiguous: Yes
Permitted: Yes
Wet space: Yes
Addition: No
Conversion: No

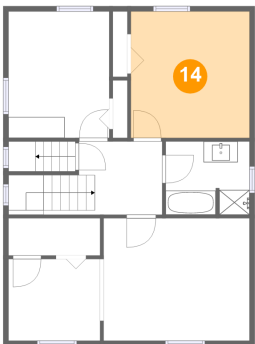
13 Floor 3 - Hall



Max Dimensions: 8'0" x 7'4"
Calculated Area: 105 sq. ft
Included: Yes

Heated: Yes
Finished: Yes
Enclosed: Yes
Contiguous: Yes
Permitted: Yes
Wet space: No
Addition: No
Conversion: No

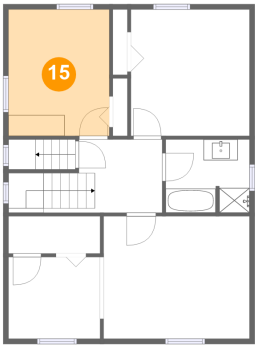
14 Floor 3 - Bedroom



Max Dimensions: 11'4" x 12'1"
Calculated Area: 137 sq. ft
Included: Yes

Heated: Yes
Finished: Yes
Enclosed: Yes
Contiguous: Yes
Permitted: Yes
Wet space: No
Addition: No
Conversion: No

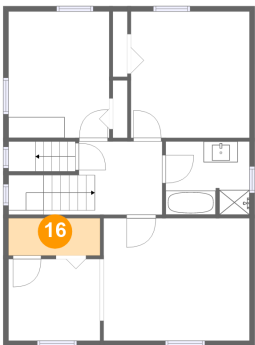
15 Floor 3 - Bedroom



Max Dimensions: 9'7" x 12'1"
Calculated Area: 116 sq. ft
Included: Yes

Heated: Yes
Finished: Yes
Enclosed: Yes
Contiguous: Yes
Permitted: Yes
Wet space: No
Addition: No
Conversion: No

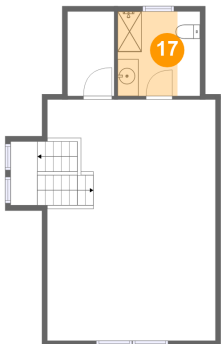
16 Floor 3 - W.I.C.



Max Dimensions: 8'9" x 3'7"
Calculated Area: 31 sq. ft
Included: Yes

Heated: Yes
Finished: Yes
Enclosed: Yes
Contiguous: Yes
Permitted: Yes
Wet space: No
Addition: No
Conversion: No

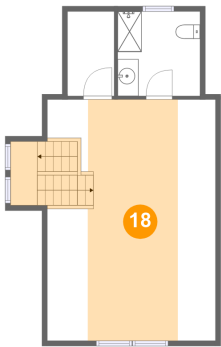
17 Floor 4 - Bath



Max Dimensions: 7'10" x 8'1"
Calculated Area: 46 sq. ft
Included: Yes

Heated: Yes
Finished: Yes
Enclosed: Yes
Contiguous: Yes
Permitted: Yes
Wet space: Yes
Addition: No
Conversion: No

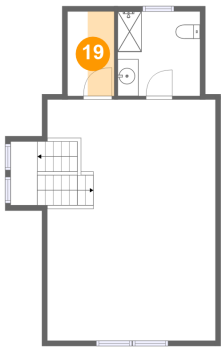
18 Floor 4 - Room



Max Dimensions: 16'1" x 23'0"
Calculated Area: 244 sq. ft
Included: Yes

Heated: Yes
Finished: Yes
Enclosed: Yes
Contiguous: Yes
Permitted: Yes
Wet space: No
Addition: No
Conversion: No

19 Floor 4 - Room



Max Dimensions: 4'6" x 8'1"
Calculated Area: 20 sq. ft
Included: Yes

Heated: Yes
Finished: Yes
Enclosed: Yes
Contiguous: Yes
Permitted: Yes
Wet space: No
Addition: No
Conversion: No