

Home data report

2224 W Western Ave, South Bend, IN, US



Total Area: 2801 sq. ft

Below Ground: 0 sq. ft, 1st Floor: 2801 sq. ft

Excluded: Basement 782 sq. ft, Walls: 179 sq. ft

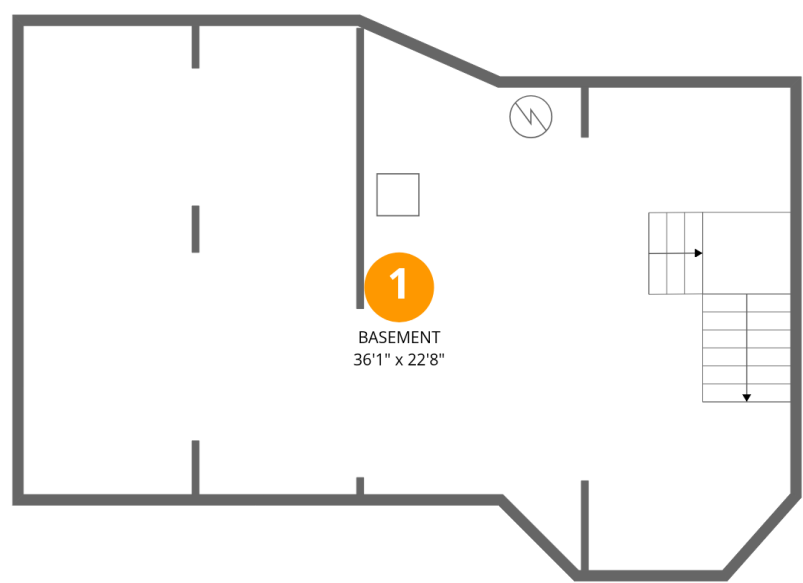
Property summary

**2**
Floors

**2**
Half baths

Home data report

2224 W Western Ave, South Bend, IN, US



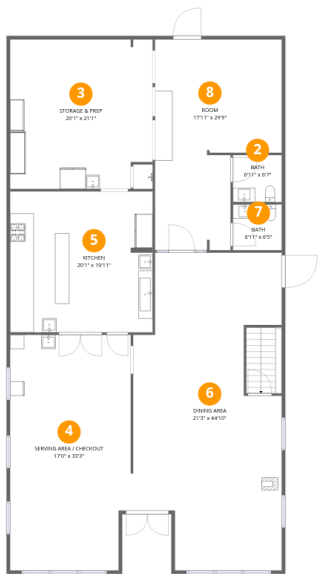
Room dimensions

Floor 1 Below grade Total:0sqft Excluded: 782sqft

#		Dimensions	sqft	Counted as living area
1	Basement	36'1" x 22'8"	774 sq. ft	No

Home data report

2224 W Western Ave, South Bend, IN, US

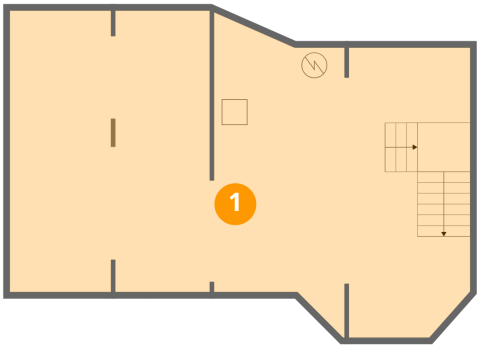


Room dimensions

Floor 2 Total:2801sqft Excluded: 0sqft

#		Dimensions	sqft	Counted as living area
2	Bath	6'11" x 6'7"	46 sq. ft	Yes
3	Storage & Prep	20'1" x 21'1"	412 sq. ft	Yes
4	Serving Area / Checkout	17'0" x 33'3"	551 sq. ft	Yes
5	Kitchen	20'1" x 19'11"	397 sq. ft	Yes
6	Dining Area	21'3" x 44'10"	802 sq. ft	Yes
7	Bath	6'11" x 6'5"	44 sq. ft	Yes
8	Room	17'11" x 29'9"	431 sq. ft	Yes

1 Floor 1 - Basement



Dimensions: 36'1" x 22'8"
Area: 774 sq. ft
Counted as living area: No

Heated: Yes
Finished: No
Enclosed: Yes
Contiguous: Yes
Permitted: Yes
Wet space: No
Addition: No
Conversion: No

2 Floor 2 - Bath



Dimensions: 6'11" x 6'7"
Area: 46 sq. ft
Counted as living area: Yes

Heated: Yes
Finished: Yes
Enclosed: Yes
Contiguous: Yes
Permitted: Yes
Wet space: Yes
Addition: No
Conversion: No

3 Floor 2 - Storage & Prep



Dimensions: 20'1" x 21'1"
Area: 412 sq. ft
Counted as living area: Yes

Heated: Yes
Finished: Yes
Enclosed: Yes
Contiguous: Yes
Permitted: Yes
Wet space: No
Addition: No
Conversion: No

4 Floor 2 - Serving Area / Checkout



Dimensions: 17'0" x 33'3"
Area: 551 sq. ft
Counted as living area: Yes

Heated: Yes
Finished: Yes
Enclosed: Yes
Contiguous: Yes
Permitted: Yes
Wet space: No
Addition: No
Conversion: No

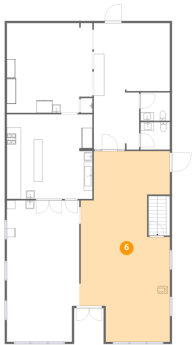
5 Floor 2 - Kitchen



Dimensions: 20'1" x 19'11"
Area: 397 sq. ft
Counted as living area: Yes

Heated: Yes
Finished: Yes
Enclosed: Yes
Contiguous: Yes
Permitted: Yes
Wet space: No
Addition: No
Conversion: No

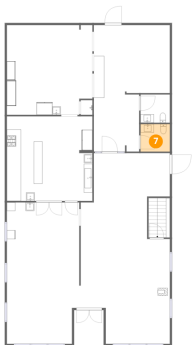
6 Floor 2 - Dining Area



Dimensions: 21'3" x 44'10"
Area: 802 sq. ft
Counted as living area: Yes

Heated: Yes
Finished: Yes
Enclosed: Yes
Contiguous: Yes
Permitted: Yes
Wet space: No
Addition: No
Conversion: No

7 Floor 2 - Bath



Dimensions: 6'11" x 6'5"
Area: 44 sq. ft
Counted as living area: Yes

Heated: Yes
Finished: Yes
Enclosed: Yes
Contiguous: Yes
Permitted: Yes
Wet space: Yes
Addition: No
Conversion: No

8 Floor 2 - Room



Dimensions: 17'11" x 29'9"
Area: 431 sq. ft
Counted as living area: Yes

Heated: Yes
Finished: Yes
Enclosed: Yes
Contiguous: Yes
Permitted: Yes
Wet space: No
Addition: No
Conversion: No