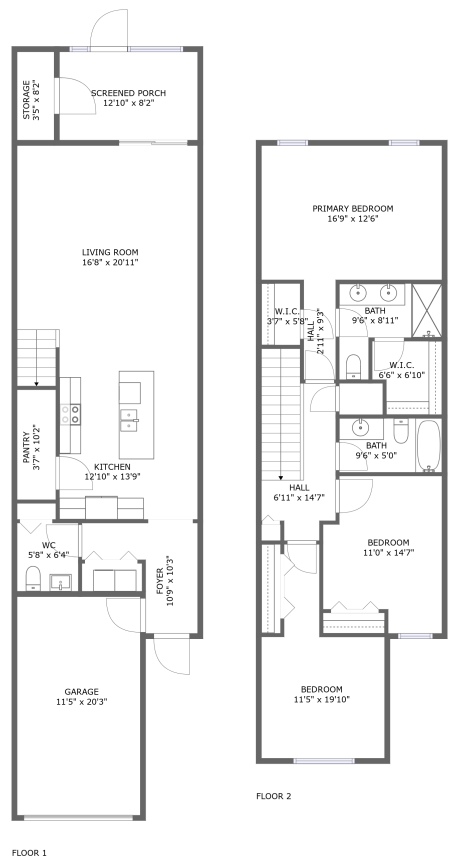





2011 Hawks View Drive, Ruskin, Hillsborough County,  
Florida, United States, 33570





Property summary


 **1** Garages


 **3** Bedrooms

 **2** Bathrooms

 **1** Half baths

 **2** Floors

 **1,689** Gross living area sqft

 **2,090** Total sqft

# 2011 Hawks View Drive, Ruskin, Hillsborough County, Florida, United States, 33570



## Room dimensions

### Floor 1

Total sqft: 1152    Living area: 751

#		Dimensions	sqft	Counted as living area
1	Screened Porch	12'10" x 8'2"	105 sq. ft	No
2	Garage	11'5" x 20'3"	231 sq. ft	No
3	Kitchen	12'10" x 13'9"	176 sq. ft	Yes
4	WC	5'8" x 6'4"	36 sq. ft	Yes
5	Storage	3'5" x 8'2"	28 sq. ft	No
6	Living Room	16'8" x 20'11"	354 sq. ft	Yes
7	Foyer	10'9" x 10'3"	69 sq. ft	Yes
8	Pantry	3'7" x 10'2"	37 sq. ft	Yes

# 2011 Hawks View Drive, Ruskin, Hillsborough County, Florida, United States, 33570



## Room dimensions

Floor 2

Total sqft: 938    Living area: 938

#		Dimensions	sqft	Counted as living area
9	W.I.C.	3'7" x 5'8"	20 sq. ft	Yes
10	Bedroom	11'5" x 19'10"	157 sq. ft	Yes
11	Hall	2'11" x 9'3"	27 sq. ft	Yes
12	Primary Bedroom	16'9" x 12'6"	208 sq. ft	Yes
13	W.I.C.	6'6" x 6'10"	40 sq. ft	Yes
14	Bath	9'6" x 5'0"	48 sq. ft	Yes
15	Bedroom	11'0" x 14'7"	141 sq. ft	Yes
16	Hall	6'11" x 14'7"	105 sq. ft	Yes
17	Bath	9'6" x 8'11"	58 sq. ft	Yes

2011 Hawks View Drive, Ruskin, Hillsborough County,  
Florida, United States, 33570

**1** Floor 1 - Screened Porch



Dimensions: 12'10" x 8'2"  
Area: 105 sq. ft  
Counted as living area: No

Heated: No  
Finished: Yes  
Enclosed: No  
Contiguous: Yes  
Permitted: Yes  
Wet space: No  
Addition: No  
Conversion: No

**2** Floor 1 - Garage



Dimensions: 11'5" x 20'3"  
Area: 231 sq. ft  
Counted as living area: No

Heated: No  
Finished: No  
Enclosed: Yes  
Contiguous: Yes  
Permitted: Yes  
Wet space: No  
Addition: No  
Conversion: No

# 2011 Hawks View Drive, Ruskin, Hillsborough County, Florida, United States, 33570

## 3 Floor 1 - Kitchen



Dimensions: 12'10" x 13'9"  
Area: 176 sq. ft  
Counted as living area: Yes

Heated: Yes  
Finished: Yes  
Enclosed: Yes  
Contiguous: Yes  
Permitted: Yes  
Wet space: No  
Addition: No  
Conversion: No

## 4 Floor 1 - WC



Dimensions: 5'8" x 6'4"  
Area: 36 sq. ft  
Counted as living area: Yes

Heated: Yes  
Finished: Yes  
Enclosed: Yes  
Contiguous: Yes  
Permitted: Yes  
Wet space: Yes  
Addition: No  
Conversion: No

## 5 Floor 1 - Storage



Dimensions: 3'5" x 8'2"  
Area: 28 sq. ft  
Counted as living area: No

Heated: No  
Finished: No  
Enclosed: No  
Contiguous: Yes  
Permitted: Yes  
Wet space: No  
Addition: No  
Conversion: No

# 2011 Hawks View Drive, Ruskin, Hillsborough County, Florida, United States, 33570

## 6 Floor 1 - Living Room



Dimensions: 16'8" x 20'11"  
Area: 354 sq. ft  
Counted as living area: Yes

Heated: Yes  
Finished: Yes  
Enclosed: Yes  
Contiguous: Yes  
Permitted: Yes  
Wet space: No  
Addition: No  
Conversion: No

## 7 Floor 1 - Foyer



Dimensions: 10'9" x 10'3"  
Area: 69 sq. ft  
Counted as living area: Yes

Heated: Yes  
Finished: Yes  
Enclosed: Yes  
Contiguous: Yes  
Permitted: Yes  
Wet space: No  
Addition: No  
Conversion: No

## 8 Floor 1 - Pantry

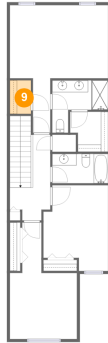


Dimensions: 3'7" x 10'2"  
Area: 37 sq. ft  
Counted as living area: Yes

Heated: Yes  
Finished: Yes  
Enclosed: Yes  
Contiguous: Yes  
Permitted: Yes  
Wet space: No  
Addition: No  
Conversion: No

# 2011 Hawks View Drive, Ruskin, Hillsborough County, Florida, United States, 33570

## 9 Floor 2 - W.I.C.



Dimensions: 3'7" x 5'8"  
Area: 20 sq. ft  
Counted as living area: Yes

Heated: Yes  
Finished: Yes  
Enclosed: Yes  
Contiguous: Yes  
Permitted: Yes  
Wet space: No  
Addition: No  
Conversion: No

## 10 Floor 2 - Bedroom



Dimensions: 11'5" x 19'10"  
Area: 157 sq. ft  
Counted as living area: Yes

Heated: Yes  
Finished: Yes  
Enclosed: Yes  
Contiguous: Yes  
Permitted: Yes  
Wet space: No  
Addition: No  
Conversion: No

## 11 Floor 2 - Hall

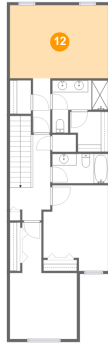


Dimensions: 2'11" x 9'3"  
Area: 27 sq. ft  
Counted as living area: Yes

Heated: Yes  
Finished: Yes  
Enclosed: Yes  
Contiguous: Yes  
Permitted: Yes  
Wet space: No  
Addition: No  
Conversion: No

# 2011 Hawks View Drive, Ruskin, Hillsborough County, Florida, United States, 33570

## 12 Floor 2 - Primary Bedroom



Dimensions: 16'9" x 12'6"  
Area: 208 sq. ft  
Counted as living area: Yes

Heated: Yes  
Finished: Yes  
Enclosed: Yes  
Contiguous: Yes  
Permitted: Yes  
Wet space: No  
Addition: No  
Conversion: No

## 13 Floor 2 - W.I.C.



Dimensions: 6'6" x 6'10"  
Area: 40 sq. ft  
Counted as living area: Yes

Heated: Yes  
Finished: Yes  
Enclosed: Yes  
Contiguous: Yes  
Permitted: Yes  
Wet space: No  
Addition: No  
Conversion: No

## 14 Floor 2 - Bath



Dimensions: 9'6" x 5'0"  
Area: 48 sq. ft  
Counted as living area: Yes

Heated: Yes  
Finished: Yes  
Enclosed: Yes  
Contiguous: Yes  
Permitted: Yes  
Wet space: Yes  
Addition: No  
Conversion: No

# 2011 Hawks View Drive, Ruskin, Hillsborough County, Florida, United States, 33570

## 15 Floor 2 - Bedroom



Dimensions: 11'0" x 14'7"  
Area: 141 sq. ft  
Counted as living area: Yes

Heated: Yes  
Finished: Yes  
Enclosed: Yes  
Contiguous: Yes  
Permitted: Yes  
Wet space: No  
Addition: No  
Conversion: No

## 16 Floor 2 - Hall



Dimensions: 6'11" x 14'7"  
Area: 105 sq. ft  
Counted as living area: Yes

Heated: Yes  
Finished: Yes  
Enclosed: Yes  
Contiguous: Yes  
Permitted: Yes  
Wet space: No  
Addition: No  
Conversion: No

## 17 Floor 2 - Bath



Dimensions: 9'6" x 8'11"  
Area: 58 sq. ft  
Counted as living area: Yes

Heated: Yes  
Finished: Yes  
Enclosed: Yes  
Contiguous: Yes  
Permitted: Yes  
Wet space: Yes  
Addition: No  
Conversion: No