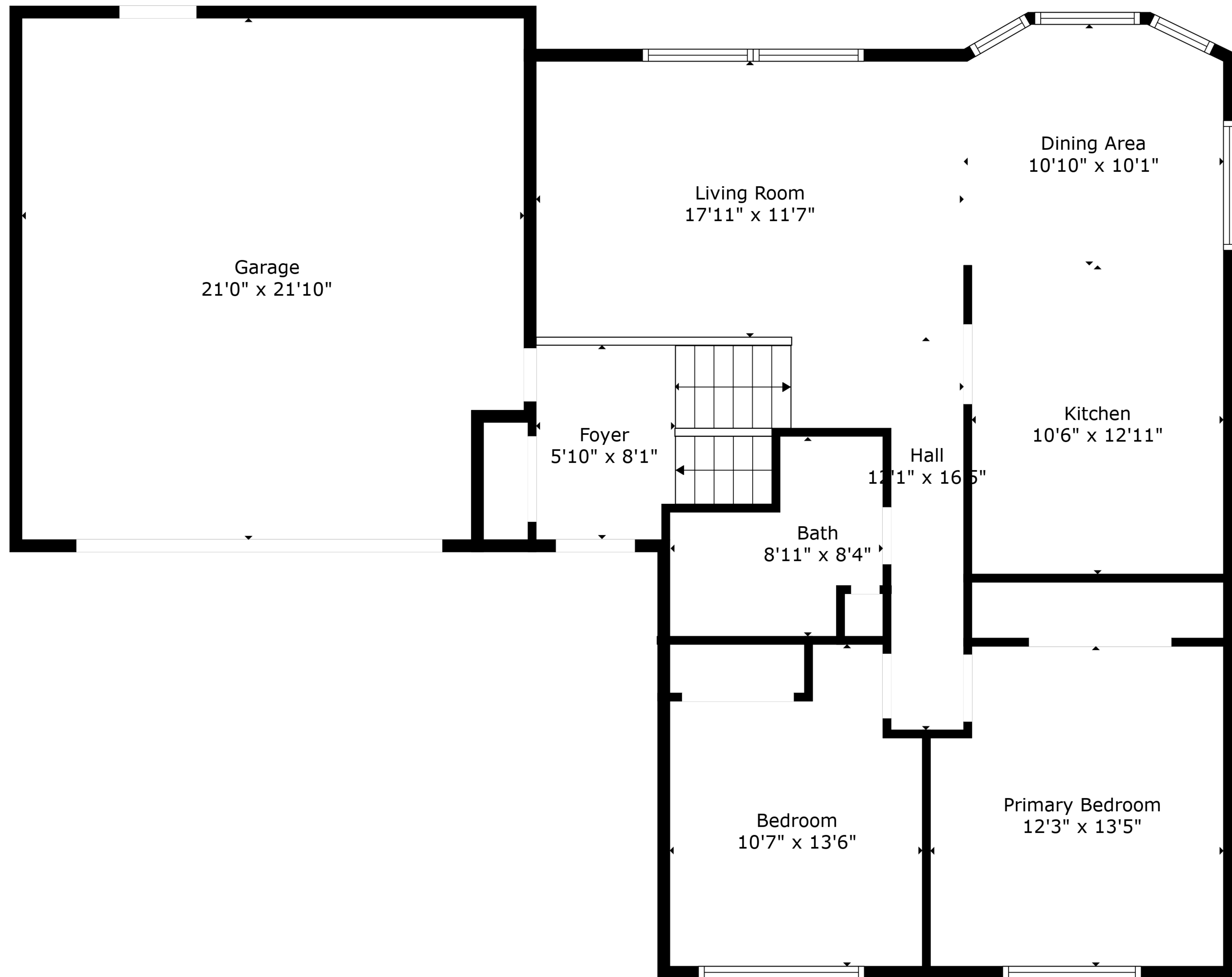


TOTAL: 1042 sq. ft

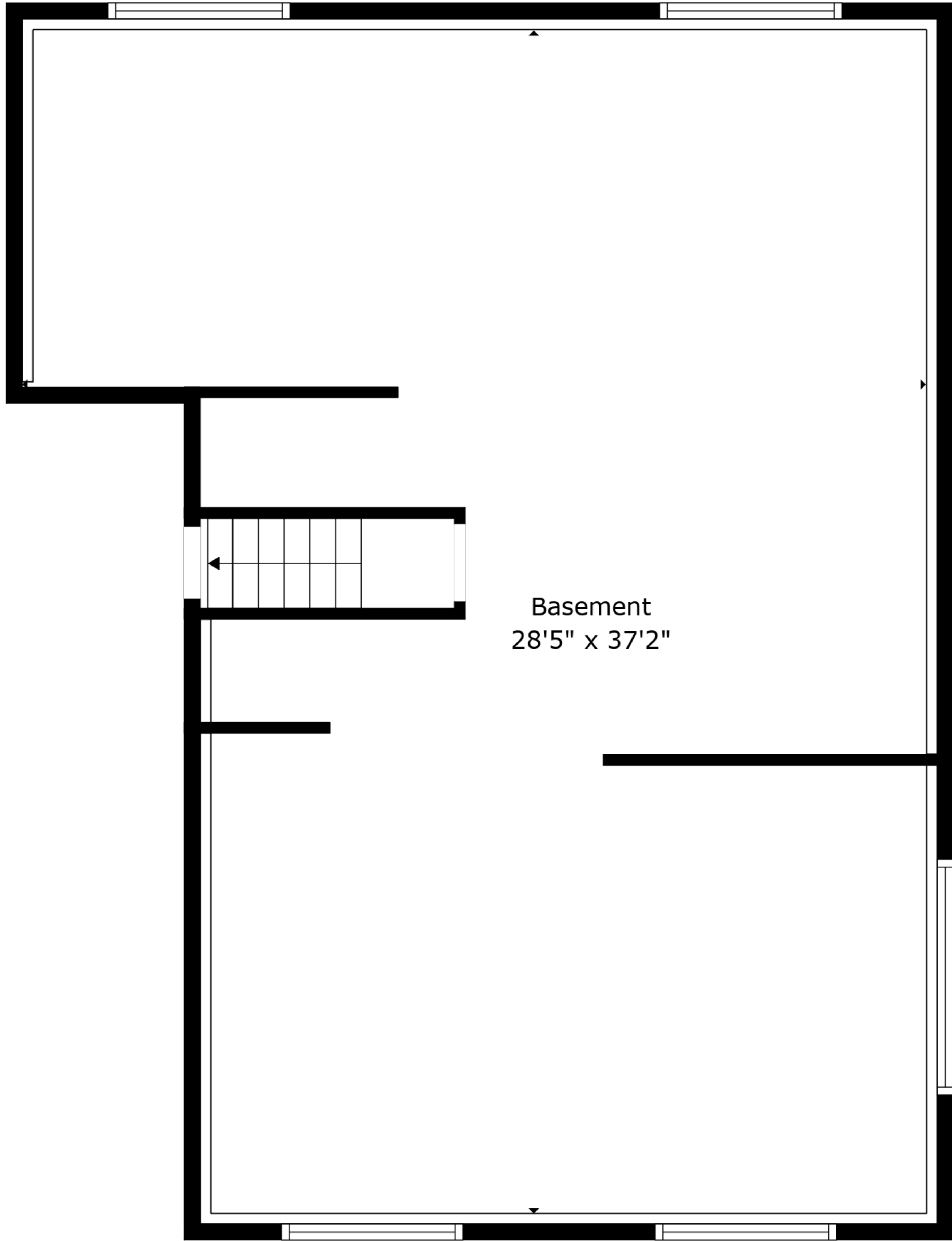
BELOW GROUND: 29 sq. ft, FLOOR 2: 1013 sq. ft
EXCLUDED AREAS: BASEMENT: 913 sq. ft, GARAGE: 447 sq. ft



TOTAL: 1042 sq. ft

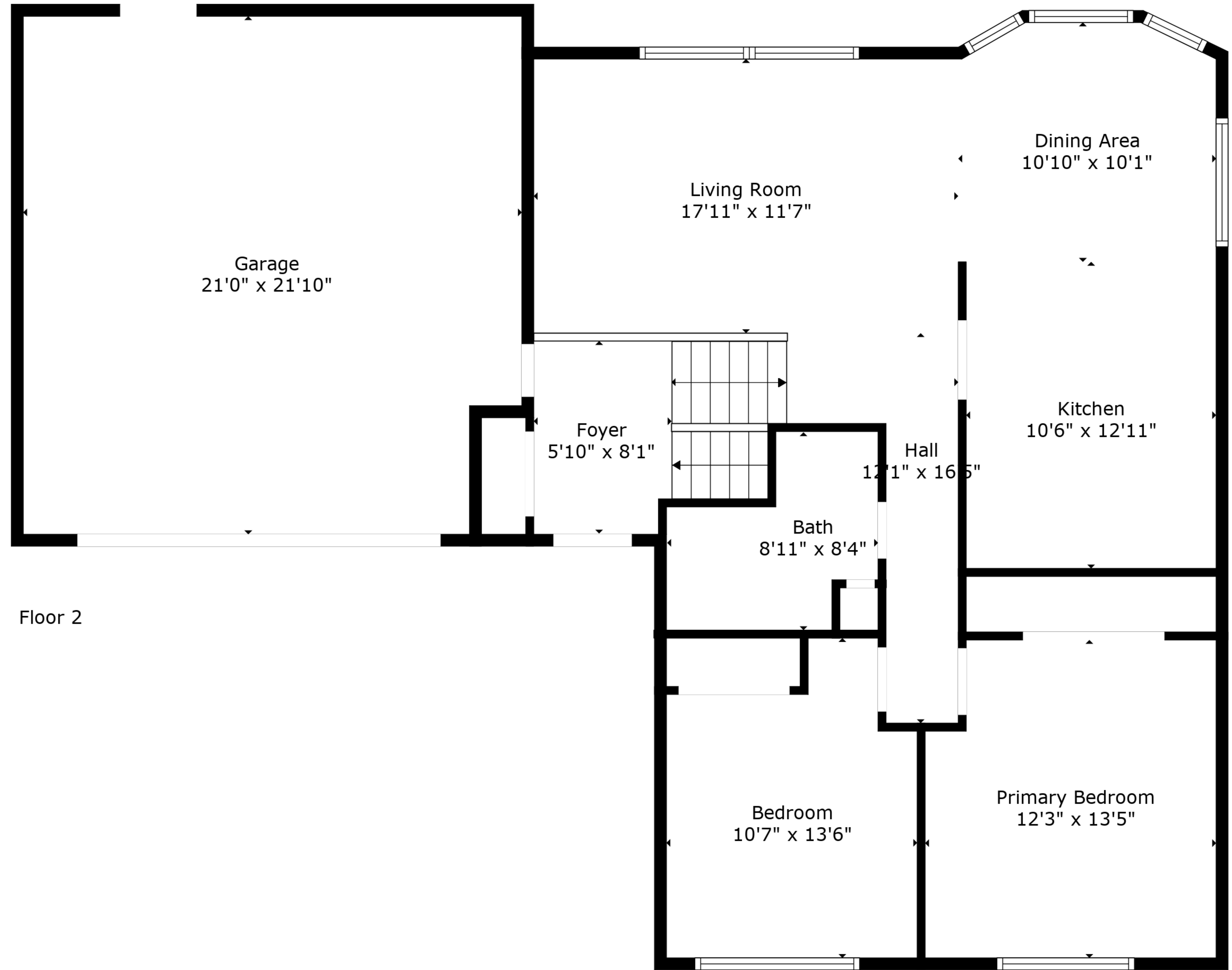
BELOW GROUND: 29 sq. ft, FLOOR 2: 1013 sq. ft
 EXCLUDED AREAS: BASEMENT: 913 sq. ft, GARAGE: 447 sq. ft

Created By Nordy Photography. Calculations Deemed Highly Reliable But Not Guaranteed.



Basement
28'5" x 37'2"

Floor 1



Garage
21'0" x 21'10"

Living Room
17'11" x 11'7"

Dining Area
10'10" x 10'1"

Foyer
5'10" x 8'1"

Hall
12'1" x 16'5"

Kitchen
10'6" x 12'11"

Bath
8'11" x 8'4"

Bedroom
10'7" x 13'6"

Primary Bedroom
12'3" x 13'5"

Floor 2

TOTAL: 1042 sq. ft
 BELOW GROUND: 29 sq. ft, FLOOR 2: 1013 sq. ft
 EXCLUDED AREAS: BASEMENT: 913 sq. ft, GARAGE: 447 sq. ft