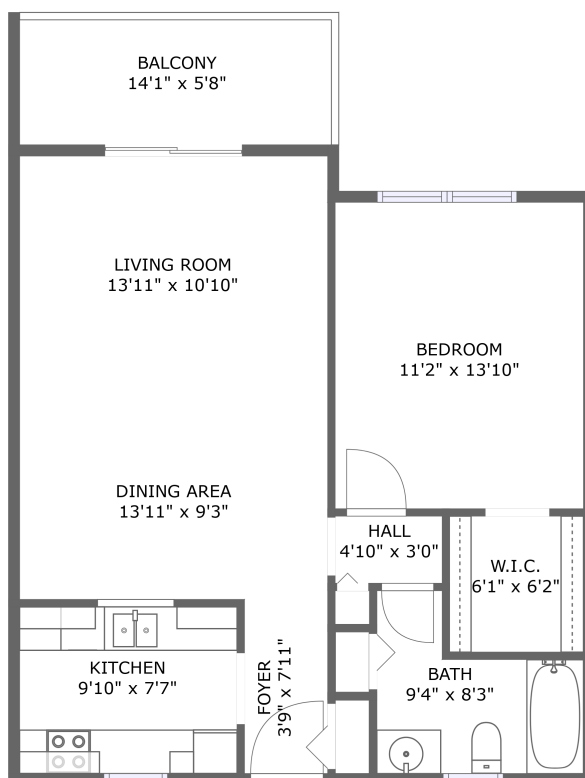


464 North Paula Drive, Harbor Pointe, Dunedin, Pinellas County, Florida, United States, 34698, 322



FLOOR 1

Property summary

 **0** Garages


 **1** Bedrooms

 **1** Bathrooms

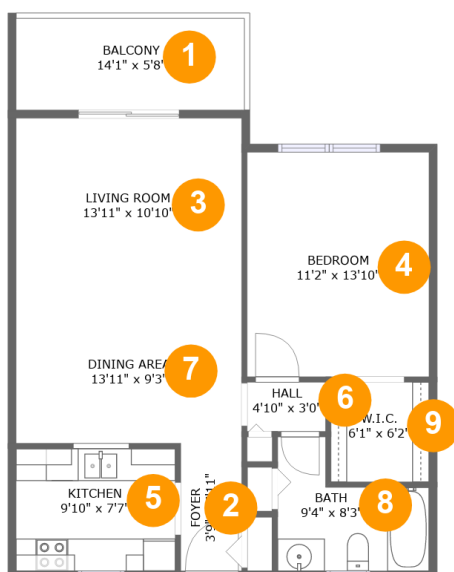
 **0** Half baths

 **1** Floors

 **690** Gross living area sqft

 **770** Total sqft

464 North Paula Drive, Harbor Pointe, Dunedin, Pinellas County, Florida, United States, 34698, 322



Room dimensions

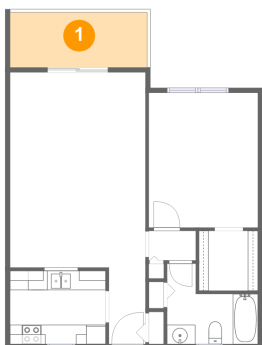
Floor 1

Total sqft: 770 Living area: 690

#		Dimensions	sqft	Counted as living area
1	Outdoor	14'1" x 5'8"	80 sq. ft	No
2	Entry	3'9" x 7'11"	30 sq. ft	Yes
3	Living Room	13'11" x 10'10"	151 sq. ft	Yes
4	Bedroom	11'2" x 13'10"	156 sq. ft	Yes
5	Kitchen	9'10" x 7'7"	75 sq. ft	Yes
6	Hall	4'10" x 3'0"	15 sq. ft	Yes
7	Dining Room	13'11" x 9'3"	129 sq. ft	Yes
8	Bath	9'4" x 8'3"	58 sq. ft	Yes
9	Cl	6'1" x 6'2"	37 sq. ft	Yes

464 North Paula Drive, Harbor Pointe, Dunedin, Pinellas County, Florida, United States, 34698, 322

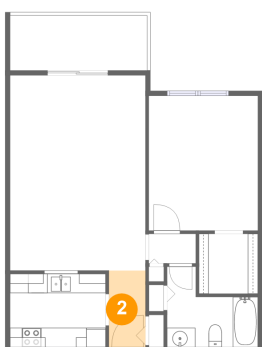
1 Floor 1 - Outdoor



Dimensions: 14'1" x 5'8"
Area: 80 sq. ft
Counted as living area: No

Heated: No
Finished: Yes
Enclosed: No
Contiguous: Yes
Permitted: Yes
Wet space: No
Addition: No
Conversion: No

2 Floor 1 - Entry

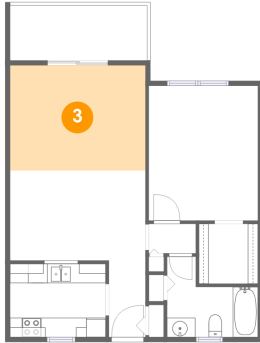


Dimensions: 3'9" x 7'11"
Area: 30 sq. ft
Counted as living area: Yes

Heated: Yes
Finished: Yes
Enclosed: Yes
Contiguous: Yes
Permitted: Yes
Wet space: No
Addition: No
Conversion: No

464 North Paula Drive, Harbor Pointe, Dunedin, Pinellas County, Florida, United States, 34698, 322

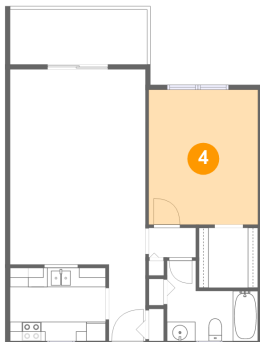
3 Floor 1 - Living Room



Dimensions: 13'11" x 10'10"
Area: 151 sq. ft
Counted as living area: Yes

Heated: Yes
Finished: Yes
Enclosed: Yes
Contiguous: Yes
Permitted: Yes
Wet space: No
Addition: No
Conversion: No

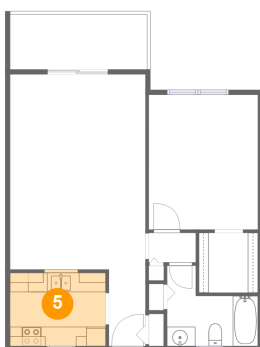
4 Floor 1 - Bedroom



Dimensions: 11'2" x 13'10"
Area: 156 sq. ft
Counted as living area: Yes

Heated: Yes
Finished: Yes
Enclosed: Yes
Contiguous: Yes
Permitted: Yes
Wet space: No
Addition: No
Conversion: No

5 Floor 1 - Kitchen

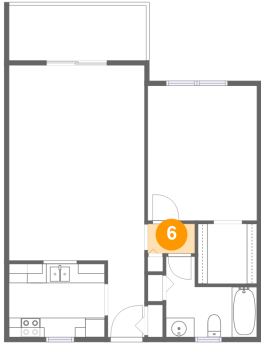


Dimensions: 9'10" x 7'7"
Area: 75 sq. ft
Counted as living area: Yes

Heated: Yes
Finished: Yes
Enclosed: Yes
Contiguous: Yes
Permitted: Yes
Wet space: No
Addition: No
Conversion: No

464 North Paula Drive, Harbor Pointe, Dunedin, Pinellas County, Florida, United States, 34698, 322

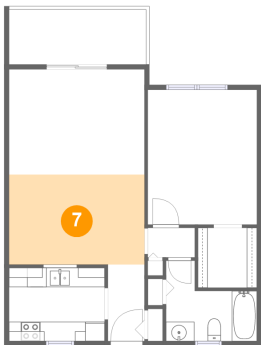
6 Floor 1 - Hall



Dimensions: 4'10" x 3'0"
Area: 15 sq. ft
Counted as living area: Yes

Heated: Yes
Finished: Yes
Enclosed: Yes
Contiguous: Yes
Permitted: Yes
Wet space: No
Addition: No
Conversion: No

7 Floor 1 - Dining Room



Dimensions: 13'11" x 9'3"
Area: 129 sq. ft
Counted as living area: Yes

Heated: Yes
Finished: Yes
Enclosed: Yes
Contiguous: Yes
Permitted: Yes
Wet space: No
Addition: No
Conversion: No

8 Floor 1 - Bath



Dimensions: 9'4" x 8'3"
Area: 58 sq. ft
Counted as living area: Yes

Heated: Yes
Finished: Yes
Enclosed: Yes
Contiguous: Yes
Permitted: Yes
Wet space: Yes
Addition: No
Conversion: No

**464 North Paula Drive, Harbor Pointe, Dunedin,
Pinellas County, Florida, United States, 34698, 322**

9 Floor 1 - Cl



Dimensions: 6'1" x 6'2"
Area: 37 sq. ft
Counted as living area: Yes

Heated: Yes
Finished: Yes
Enclosed: Yes
Contiguous: Yes
Permitted: Yes
Wet space: No
Addition: No
Conversion: No