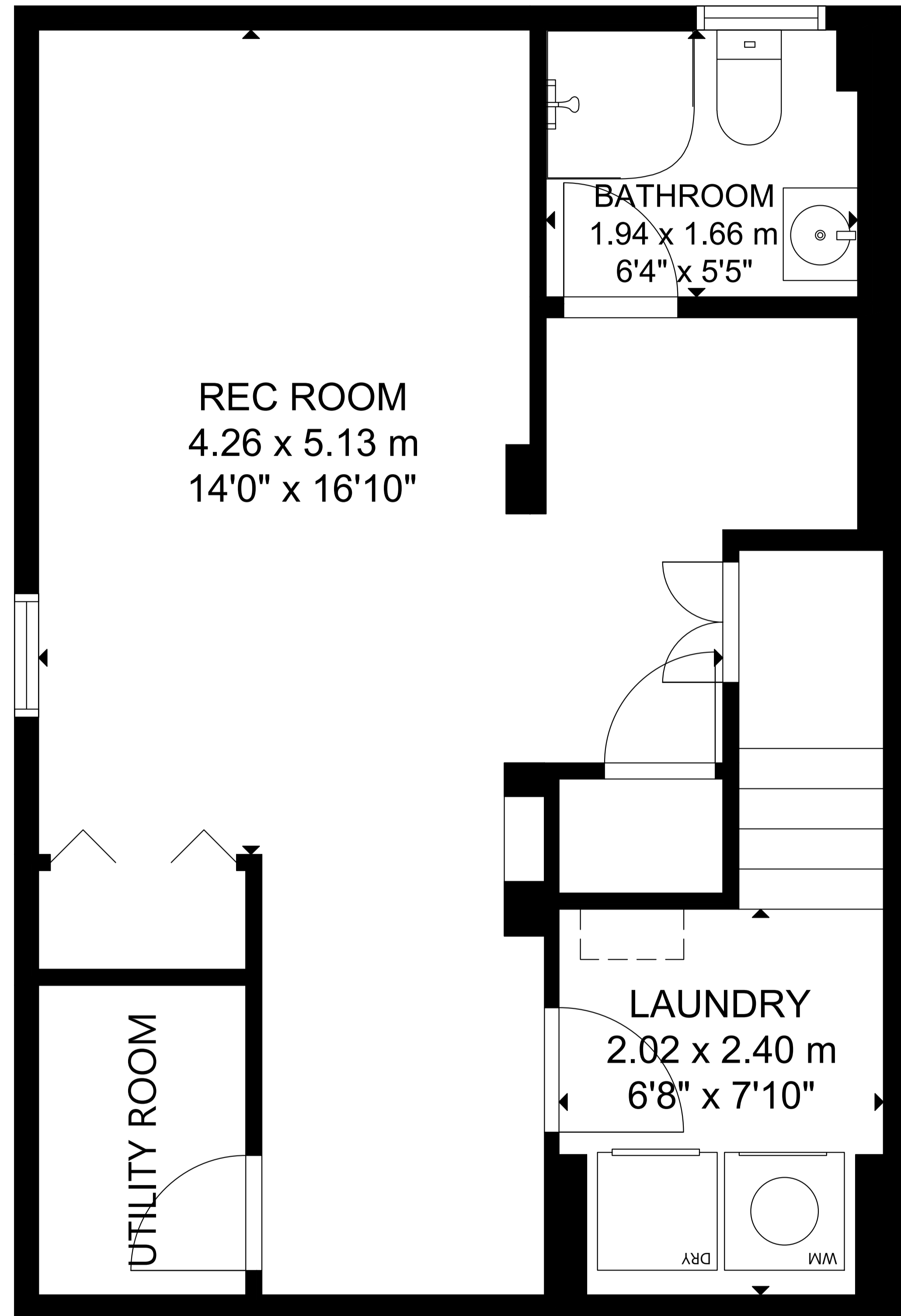
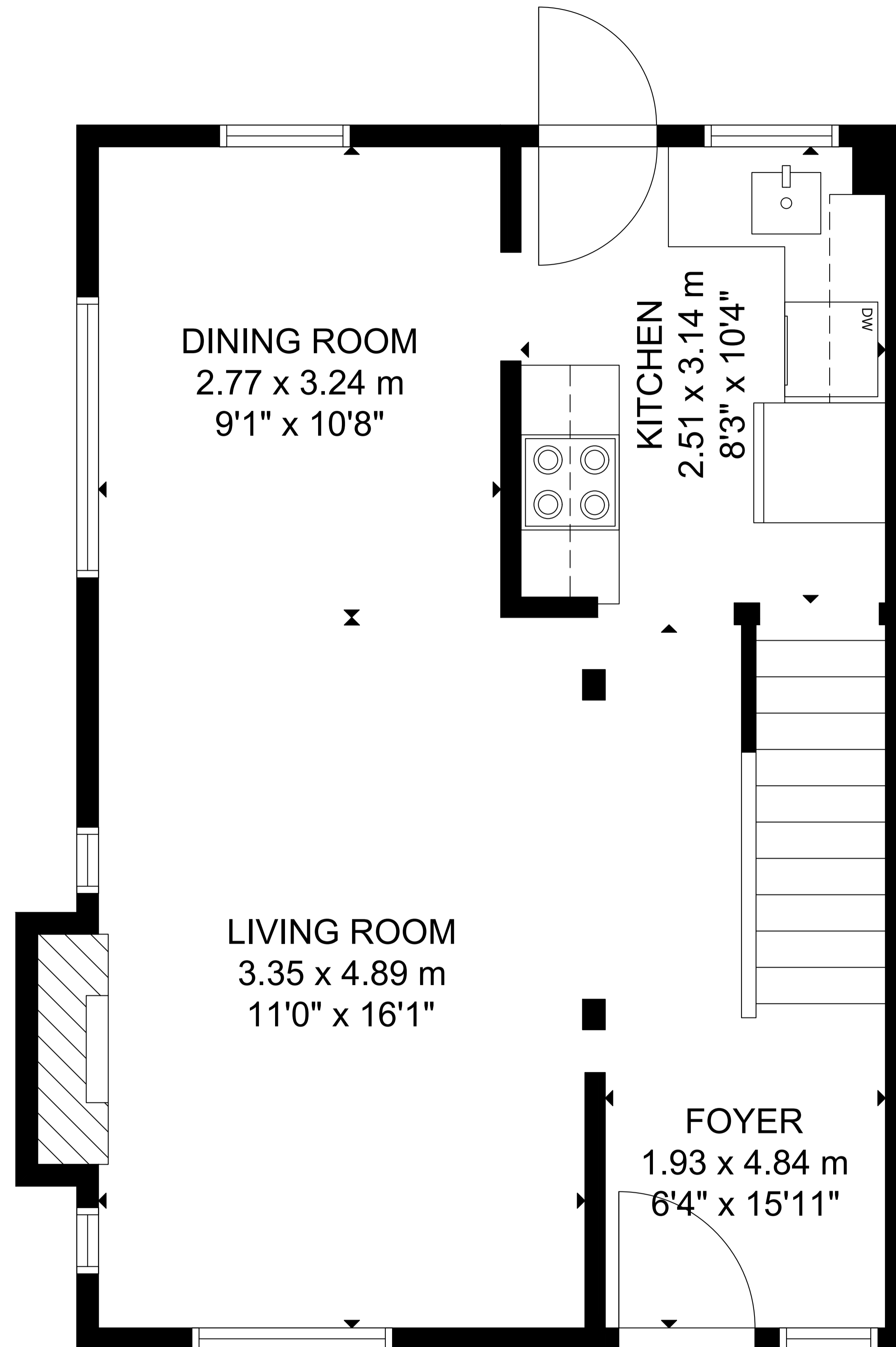


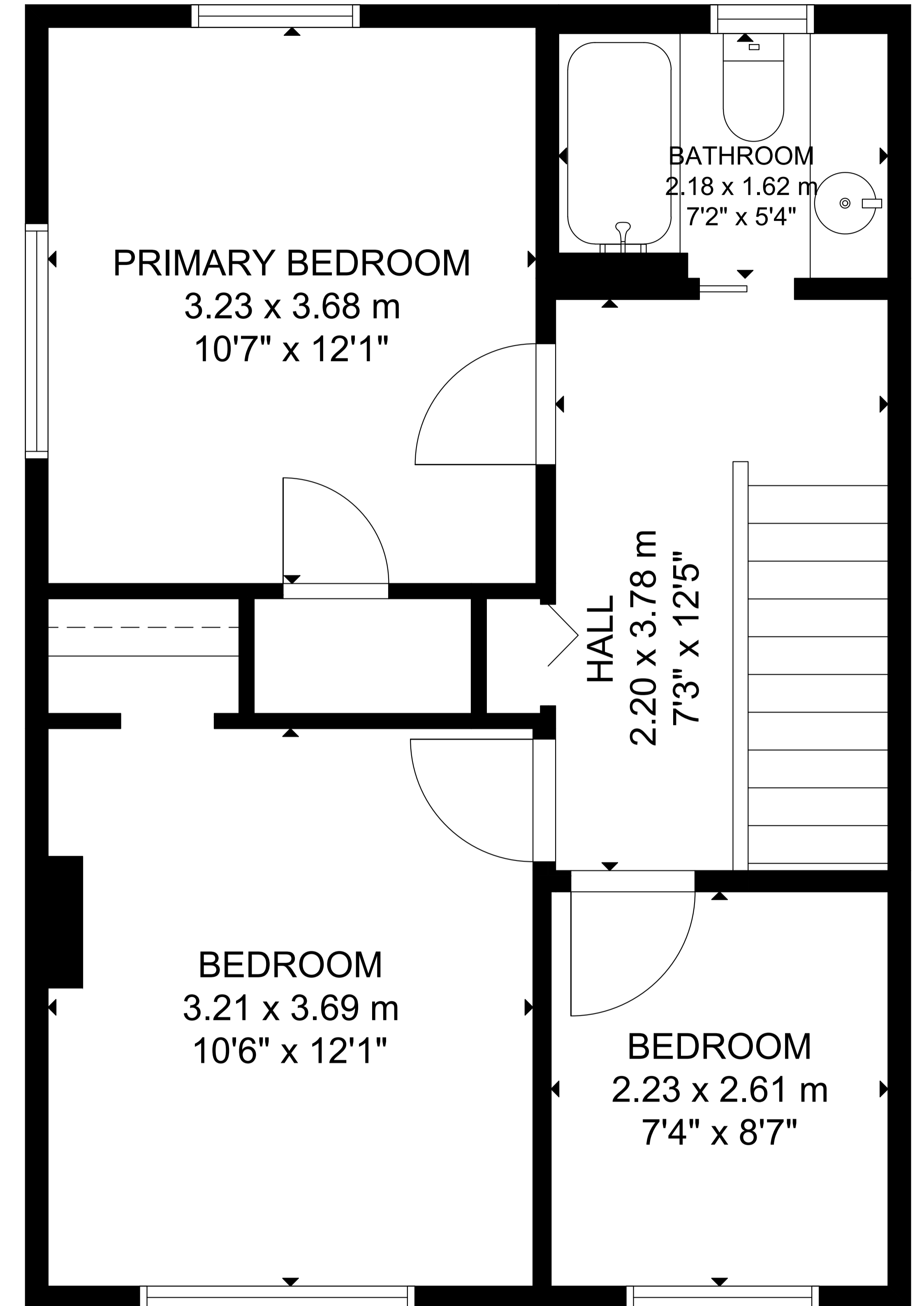
44 Kingsmount Park Road



LOWER LEVEL



MAIN FLOOR



SECOND FLOOR

GROSS INTERNAL AREA
 MAIN FLOOR: 482 sq ft/ 45 m², SECOND FLOOR: 498 sq ft/ 46 m²
 LOWER LEVEL: 440 sq ft/ 41 m²
 TOTAL: 1,420 sq ft/ 132 m²
 SIZE AND DIMENSIONS ARE APPROXIMATE, ACTUAL MAY VARY.