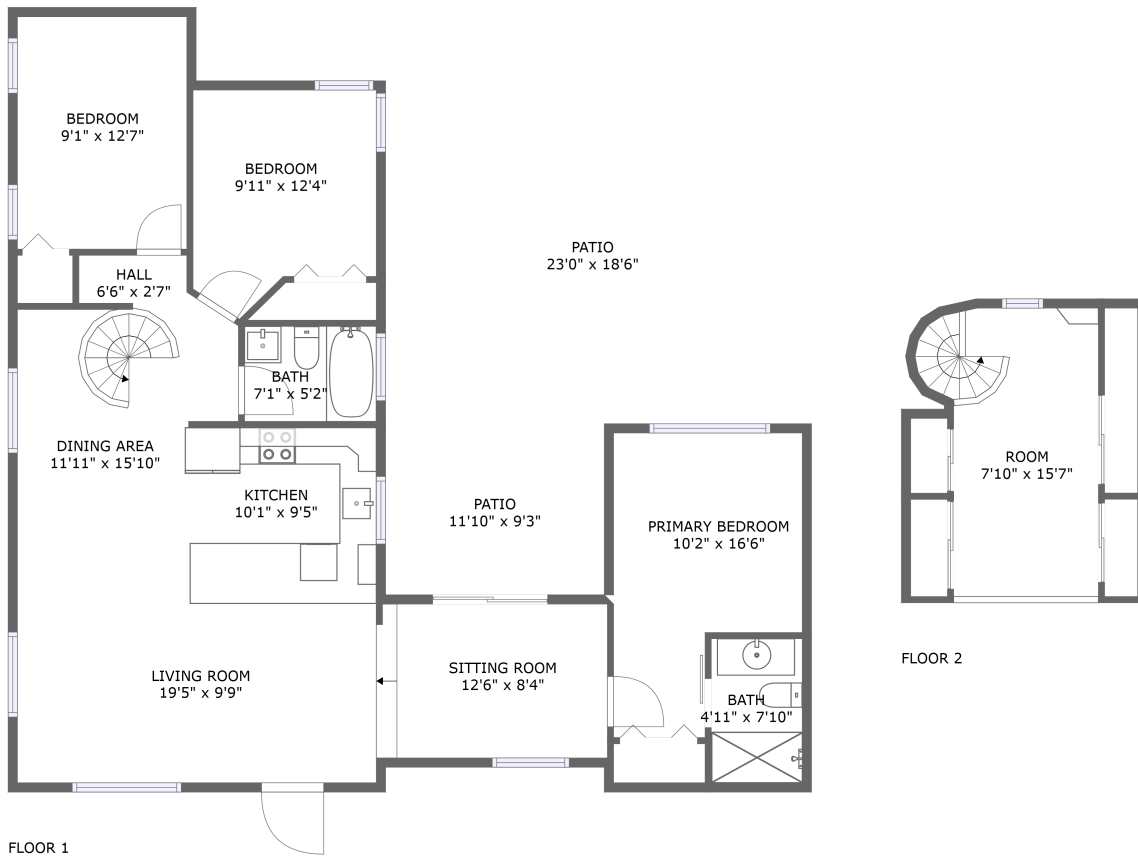


4245 Burlington Avenue North, Central Oak Park, St. Petersburg, Pinellas County, Florida,



Property Summary

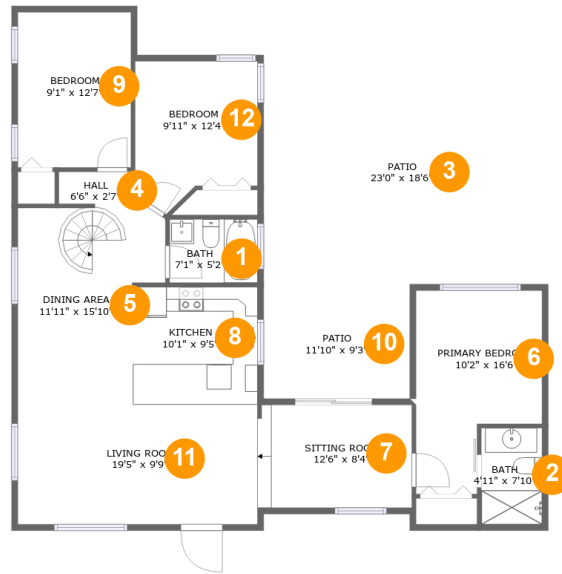
0 garages **3** bedrooms **2** bathrooms **0** half baths

2 floors

1,231 Gross Living Area sqft

1,904 total sqft

4245 Burlington Avenue North, Central Oak Park, St. Petersburg, Pinellas County, Florida,



Room Dimensions

Floor 1

Total sqft: 1695

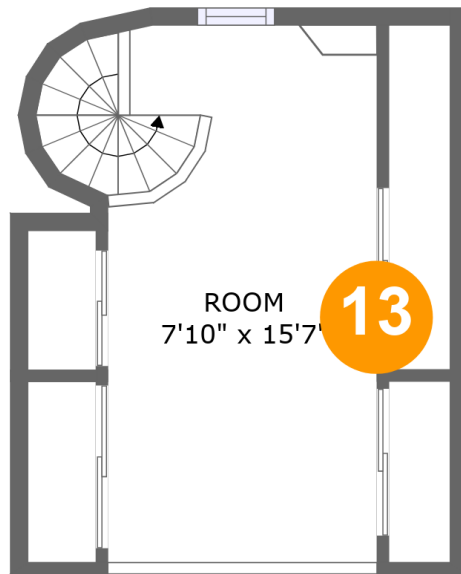
Living area: 1158

#	Room name	Dimensions	Area (sqft)	Counted as Living Area
1	Bath	7'1" x 5'2"	37 sq. ft	Yes
2	Bath	4'11" x 7'10"	38 sq. ft	Yes
3	Patio	23'0" x 18'6"	427 sq. ft	No
4	Hall	6'6" x 2'7"	15 sq. ft	Yes
5	Dining Area	11'11" x 15'10"	163 sq. ft	Yes
6	Primary Bedroom	10'2" x 16'6"	138 sq. ft	Yes
7	Sitting Room	12'6" x 8'4"	104 sq. ft	Yes
8	Kitchen	10'1" x 9'5"	96 sq. ft	Yes
9	Bedroom	9'1" x 12'7"	115 sq. ft	Yes
10	Patio	11'10" x 9'3"	109 sq. ft	No
11	Living Room	19'5" x 9'9"	190 sq. ft	Yes

**4245 Burlington Avenue North, Central Oak
Park, St. Petersburg, Pinellas County, Florida,**

#	Room name	Dimensions	Area (sqft)	Counted as Living Area
12	Bedroom	9'11" x 12'4"	106 sq. ft	Yes

4245 Burlington Avenue North, Central Oak Park, St. Petersburg, Pinellas County, Florida,



Room Dimensions

Floor 2

Total sqft: 209

Living area: 73

#	Room name	Dimensions	Area (sqft)	Counted as Living Area
13	Room	7'10" x 15'7"	128 sq. ft	No

4245 Burlington Avenue North, Central Oak Park, St. Petersburg, Pinellas County, Florida,

1 Floor 1 - Bath



Dimensions: 7'1" x 5'2"
Area: 37 sq. ft
Counted as Living Area:
Yes

Heated: Yes
Finished: Yes
Enclosed: Yes
Contiguous:
Yes
Permitted: Yes
Wet Space: Yes
Addition: No
Conversion: No

2 Floor 1 - Bath

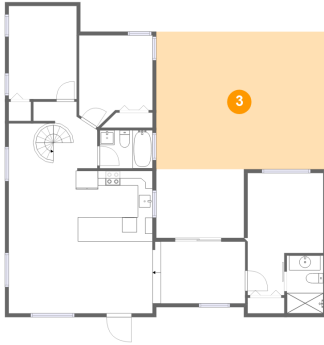


Dimensions: 4'11" x 7'10"
Area: 38 sq. ft
Counted as Living Area:
Yes

Heated: Yes
Finished: Yes
Enclosed: Yes
Contiguous:
Yes
Permitted: Yes
Wet Space: Yes
Addition: No
Conversion: No

4245 Burlington Avenue North, Central Oak Park, St. Petersburg, Pinellas County, Florida,

3 Floor 1 - Patio



Dimensions: 23'0" x 18'6"
Area: 427 sq. ft
Counted as Living Area: No

Heated: No
Finished: Yes
Enclosed: No
Contiguous: Yes
Permitted: Yes
Wet Space: No
Addition: No
Conversion: No

4 Floor 1 - Hall



Dimensions: 6'6" x 2'7"
Area: 15 sq. ft
Counted as Living Area: Yes

Heated: Yes
Finished: Yes
Enclosed: Yes
Contiguous: Yes
Permitted: Yes
Wet Space: No
Addition: No
Conversion: No

5 Floor 1 - Dining Area

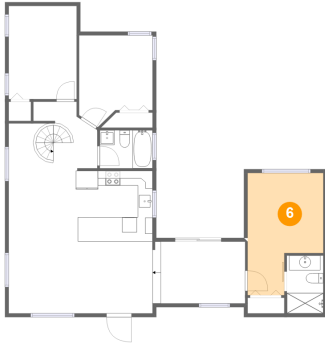


Dimensions: 11'11" x 15'10"
Area: 163 sq. ft
Counted as Living Area: Yes

Heated: Yes
Finished: Yes
Enclosed: Yes
Contiguous: Yes
Permitted: Yes
Wet Space: No
Addition: No
Conversion: No

4245 Burlington Avenue North, Central Oak Park, St. Petersburg, Pinellas County, Florida,

6 Floor 1 - Primary Bedroom



Dimensions: 10'2" x 16'6"
Area: 138 sq. ft
Counted as Living Area:
Yes

Heated: Yes
Finished: Yes
Enclosed: Yes
Contiguous:
Yes
Permitted: Yes
Wet Space: No
Addition: No
Conversion: No

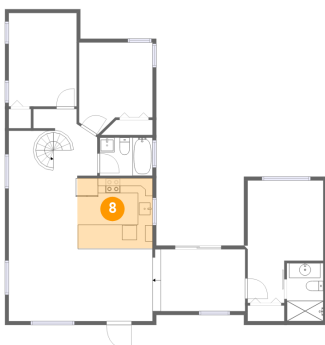
7 Floor 1 - Sitting Room



Dimensions: 12'6" x 8'4"
Area: 104 sq. ft
Counted as Living Area:
Yes

Heated: Yes
Finished: Yes
Enclosed: Yes
Contiguous:
Yes
Permitted: Yes
Wet Space: No
Addition: No
Conversion: No

8 Floor 1 - Kitchen



Dimensions: 10'1" x 9'5"
Area: 96 sq. ft
Counted as Living Area:
Yes

Heated: Yes
Finished: Yes
Enclosed: Yes
Contiguous:
Yes
Permitted: Yes
Wet Space: No
Addition: No
Conversion: No

4245 Burlington Avenue North, Central Oak Park, St. Petersburg, Pinellas County, Florida,

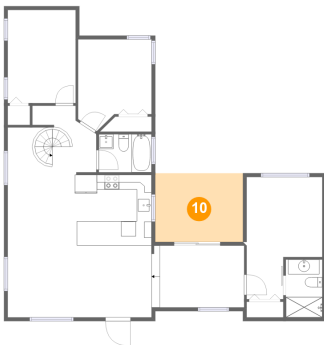
9 Floor 1 - Bedroom



Dimensions: 9'1" x 12'7"
Area: 115 sq. ft
Counted as Living Area:
Yes

Heated: Yes
Finished: Yes
Enclosed: Yes
Contiguous:
Yes
Permitted: Yes
Wet Space: No
Addition: No
Conversion: No

10 Floor 1 - Patio



Dimensions: 11'10" x 9'3"
Area: 109 sq. ft
Counted as Living Area: No

Heated: No
Finished: Yes
Enclosed: No
Contiguous: Yes
Permitted: Yes
Wet Space: No
Addition: No
Conversion: No

11 Floor 1 - Living Room

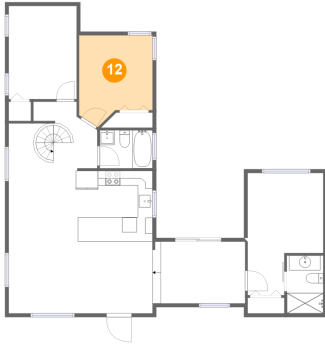


Dimensions: 19'5" x 9'9"
Area: 190 sq. ft
Counted as Living Area:
Yes

Heated: Yes
Finished: Yes
Enclosed: Yes
Contiguous:
Yes
Permitted: Yes
Wet Space: No
Addition: No
Conversion: No

4245 Burlington Avenue North, Central Oak Park, St. Petersburg, Pinellas County, Florida,

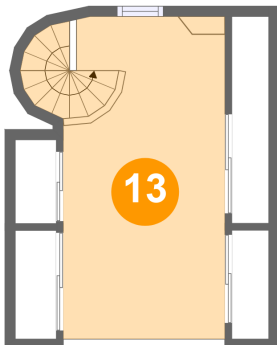
12 Floor 1 - Bedroom



Dimensions: 9'11" x 12'4"
Area: 106 sq. ft
Counted as Living Area:
Yes

Heated: Yes
Finished: Yes
Enclosed: Yes
Contiguous:
Yes
Permitted: Yes
Wet Space: No
Addition: No
Conversion: No

13 Floor 2 - Room



Dimensions: 7'10" x 15'7"
Area: 128 sq. ft
Counted as Living Area: No

Heated: Yes
Finished: Yes
Enclosed: Yes
Contiguous: Yes
Permitted: Yes
Wet Space: No
Addition: No
Conversion: No