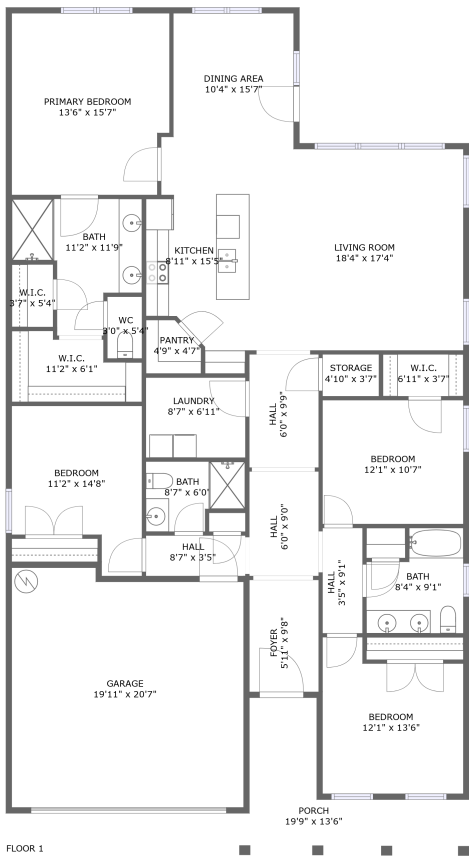


Home report

29685 Abbeywood Northwest Lane, Harvest, Alabama 35749, United States




Total Area: 2367 sq. ft

Floor 1: 2367 sq. ft

Excluded: Porch 145 sq. ft, Storage 17 sq. ft, Walls: 132 sq. ft

Property summary

 1 Floors

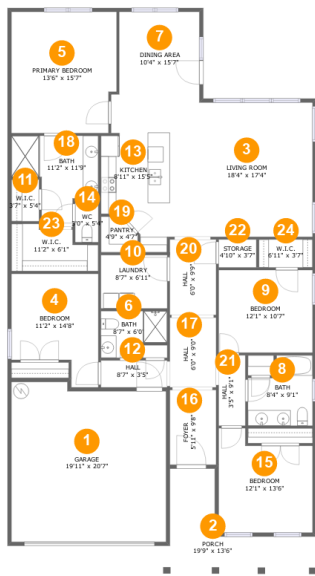
 4 Bedrooms

 3 Bathrooms

 1 Garages

Home report

29685 Abbeywood Northwest Lane, Harvest, Alabama 35749, United States



Room dimensions

Floor 1 Total:2367sqft Excluded: 162sqft

#		Max Dimensions	sqft	Included
1	Garage	19'11" x 20'7"	396 sq. ft	Yes
2	Porch	19'9" x 13'6"	145 sq. ft	No
3	Living Room	18'4" x 17'4"	318 sq. ft	Yes
4	Bedroom	11'2" x 14'8"	136 sq. ft	Yes
5	Primary Bedroom	13'6" x 15'7"	206 sq. ft	Yes
6	Bath	8'7" x 6'0"	45 sq. ft	Yes
7	Dining Area	10'4" x 15'7"	152 sq. ft	Yes
8	Bath	8'4" x 9'1"	65 sq. ft	Yes
9	Bedroom	12'1" x 10'7"	129 sq. ft	Yes
10	Laundry	8'7" x 6'11"	59 sq. ft	Yes
11	W.I.C.	3'7" x 5'4"	19 sq. ft	Yes

Home report

**29685 Abbeywood Northwest Lane, Harvest, Alabama 35749,
United States**

#		Max Dimensions	sqft	Included
12	Hall	8'7" x 3'5"	30 sq. ft	Yes
13	Kitchen	8'11" x 15'5"	114 sq. ft	Yes
14	WC	3'0" x 5'4"	16 sq. ft	Yes
15	Bedroom	12'1" x 13'6"	143 sq. ft	Yes
16	Foyer	5'11" x 9'8"	57 sq. ft	Yes
17	Hall	6'0" x 9'0"	54 sq. ft	Yes
18	Bath	11'2" x 11'9"	94 sq. ft	Yes
19	Pantry	4'9" x 4'7"	19 sq. ft	Yes
20	Hall	6'0" x 9'9"	58 sq. ft	Yes
21	Hall	3'5" x 9'1"	31 sq. ft	Yes
22	Storage	4'10" x 3'7"	17 sq. ft	No
23	W.I.C.	11'2" x 6'1"	56 sq. ft	Yes
24	W.I.C.	6'11" x 3'7"	25 sq. ft	Yes

29685 Abbeywood Northwest Lane, Harvest, Alabama 35749,
United States

1 Floor 1 - Garage



Max Dimensions: 19'11" x 20'7"
Calculated Area: 396 sq. ft
Included: No

Heated: No
Finished: Yes
Enclosed: Yes
Contiguous: Yes
Permitted: Yes
Wet space: No
Addition: No
Conversion: No

2 Floor 1 - Porch

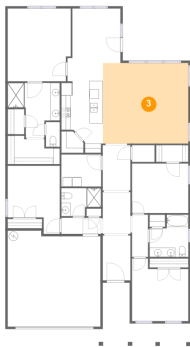


Max Dimensions: 19'9" x 13'6"
Calculated Area: 145 sq. ft
Included: No

Heated: No
Finished: Yes
Enclosed: No
Contiguous: Yes
Permitted: Yes
Wet space: No
Addition: No
Conversion: No

29685 Abbeywood Northwest Lane, Harvest, Alabama 35749,
United States

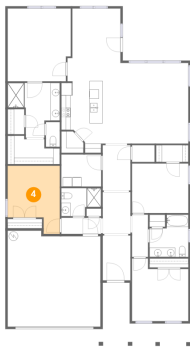
3 Floor 1 - Living Room



Max Dimensions: 18'4" x 17'4"
Calculated Area: 318 sq. ft
Included: Yes

Heated: Yes
Finished: Yes
Enclosed: Yes
Contiguous: Yes
Permitted: Yes
Wet space: No
Addition: No
Conversion: No

4 Floor 1 - Bedroom



Max Dimensions: 11'2" x 14'8"
Calculated Area: 136 sq. ft
Included: Yes

Heated: Yes
Finished: Yes
Enclosed: Yes
Contiguous: Yes
Permitted: Yes
Wet space: No
Addition: No
Conversion: No

5 Floor 1 - Primary Bedroom



Max Dimensions: 13'6" x 15'7"
Calculated Area: 206 sq. ft
Included: Yes

Heated: Yes
Finished: Yes
Enclosed: Yes
Contiguous: Yes
Permitted: Yes
Wet space: No
Addition: No
Conversion: No

29685 Abbeywood Northwest Lane, Harvest, Alabama 35749,
United States

6 Floor 1 - Bath



Max Dimensions: 8'7" x 6'0"
Calculated Area: 45 sq. ft
Included: Yes

Heated: Yes
Finished: Yes
Enclosed: Yes
Contiguous: Yes
Permitted: Yes
Wet space: Yes
Addition: No
Conversion: No

7 Floor 1 - Dining Area



Max Dimensions: 10'4" x 15'7"
Calculated Area: 152 sq. ft
Included: Yes

Heated: Yes
Finished: Yes
Enclosed: Yes
Contiguous: Yes
Permitted: Yes
Wet space: No
Addition: No
Conversion: No

8 Floor 1 - Bath

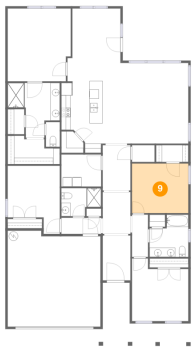


Max Dimensions: 8'4" x 9'1"
Calculated Area: 65 sq. ft
Included: Yes

Heated: Yes
Finished: Yes
Enclosed: Yes
Contiguous: Yes
Permitted: Yes
Wet space: Yes
Addition: No
Conversion: No

29685 Abbeywood Northwest Lane, Harvest, Alabama 35749,
United States

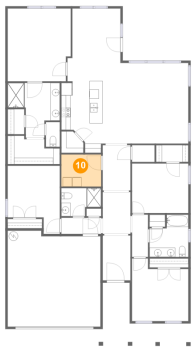
9 Floor 1 - Bedroom



Max Dimensions: 12'1" x 10'7"
Calculated Area: 129 sq. ft
Included: Yes

Heated: Yes
Finished: Yes
Enclosed: Yes
Contiguous: Yes
Permitted: Yes
Wet space: No
Addition: No
Conversion: No

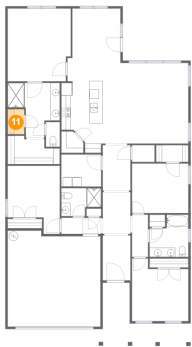
10 Floor 1 - Laundry



Max Dimensions: 8'7" x 6'11"
Calculated Area: 59 sq. ft
Included: Yes

Heated: Yes
Finished: Yes
Enclosed: Yes
Contiguous: Yes
Permitted: Yes
Wet space: No
Addition: No
Conversion: No

11 Floor 1 - W.I.C.

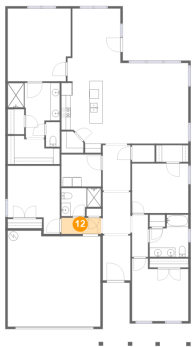


Max Dimensions: 3'7" x 5'4"
Calculated Area: 19 sq. ft
Included: Yes

Heated: Yes
Finished: Yes
Enclosed: Yes
Contiguous: Yes
Permitted: Yes
Wet space: No
Addition: No
Conversion: No

29685 Abbeywood Northwest Lane, Harvest, Alabama 35749,
United States

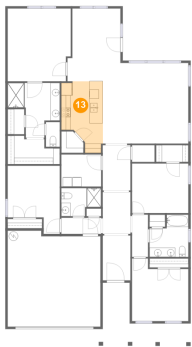
12 Floor 1 - Hall



Max Dimensions: 8'7" x 3'5"
Calculated Area: 30 sq. ft
Included: Yes

Heated: Yes
Finished: Yes
Enclosed: Yes
Contiguous: Yes
Permitted: Yes
Wet space: No
Addition: No
Conversion: No

13 Floor 1 - Kitchen



Max Dimensions: 8'11" x 15'5"
Calculated Area: 114 sq. ft
Included: Yes

Heated: Yes
Finished: Yes
Enclosed: Yes
Contiguous: Yes
Permitted: Yes
Wet space: No
Addition: No
Conversion: No

14 Floor 1 - WC



Max Dimensions: 3'0" x 5'4"
Calculated Area: 16 sq. ft
Included: Yes

Heated: Yes
Finished: Yes
Enclosed: Yes
Contiguous: Yes
Permitted: Yes
Wet space: Yes
Addition: No
Conversion: No

29685 Abbeywood Northwest Lane, Harvest, Alabama 35749,
United States

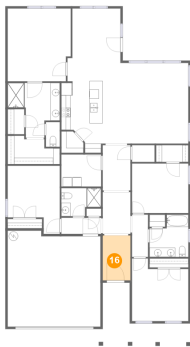
15 Floor 1 - Bedroom



Max Dimensions: 12'1" x 13'6"
Calculated Area: 143 sq. ft
Included: Yes

Heated: Yes
Finished: Yes
Enclosed: Yes
Contiguous: Yes
Permitted: Yes
Wet space: No
Addition: No
Conversion: No

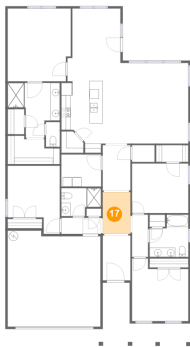
16 Floor 1 - Foyer



Max Dimensions: 5'11" x 9'8"
Calculated Area: 57 sq. ft
Included: Yes

Heated: Yes
Finished: Yes
Enclosed: Yes
Contiguous: Yes
Permitted: Yes
Wet space: No
Addition: No
Conversion: No

17 Floor 1 - Hall

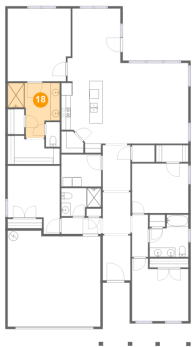


Max Dimensions: 6'0" x 9'0"
Calculated Area: 54 sq. ft
Included: Yes

Heated: Yes
Finished: Yes
Enclosed: Yes
Contiguous: Yes
Permitted: Yes
Wet space: No
Addition: No
Conversion: No

29685 Abbeywood Northwest Lane, Harvest, Alabama 35749,
United States

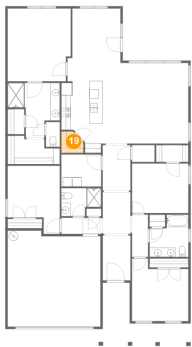
18 Floor 1 - Bath



Max Dimensions: 11'2" x 11'9"
Calculated Area: 94 sq. ft
Included: Yes

Heated: Yes
Finished: Yes
Enclosed: Yes
Contiguous: Yes
Permitted: Yes
Wet space: Yes
Addition: No
Conversion: No

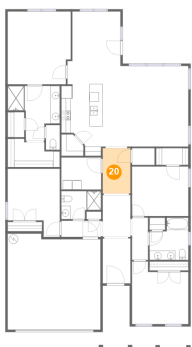
19 Floor 1 - Pantry



Max Dimensions: 4'9" x 4'7"
Calculated Area: 19 sq. ft
Included: Yes

Heated: Yes
Finished: Yes
Enclosed: Yes
Contiguous: Yes
Permitted: Yes
Wet space: No
Addition: No
Conversion: No

20 Floor 1 - Hall

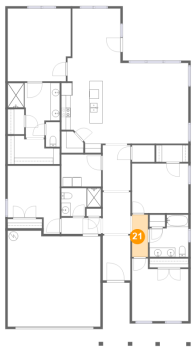


Max Dimensions: 6'0" x 9'9"
Calculated Area: 58 sq. ft
Included: Yes

Heated: Yes
Finished: Yes
Enclosed: Yes
Contiguous: Yes
Permitted: Yes
Wet space: No
Addition: No
Conversion: No

29685 Abbeywood Northwest Lane, Harvest, Alabama 35749,
United States

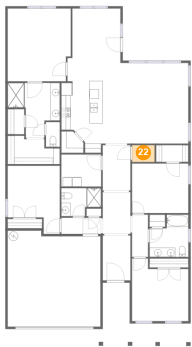
21 Floor 1 - Hall



Max Dimensions: 3'5" x 9'1"
Calculated Area: 31 sq. ft
Included: Yes

Heated: Yes
Finished: Yes
Enclosed: Yes
Contiguous: Yes
Permitted: Yes
Wet space: No
Addition: No
Conversion: No

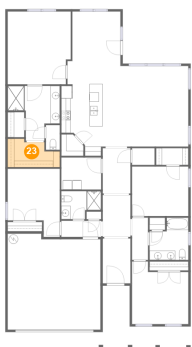
22 Floor 1 - Storage



Max Dimensions: 4'10" x 3'7"
Calculated Area: 17 sq. ft
Included: No

Heated: No
Finished: Yes
Enclosed: No
Contiguous: Yes
Permitted: Yes
Wet space: No
Addition: No
Conversion: No

23 Floor 1 - W.I.C.

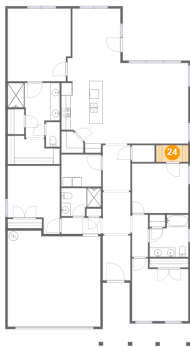


Max Dimensions: 11'2" x 6'1"
Calculated Area: 56 sq. ft
Included: Yes

Heated: Yes
Finished: Yes
Enclosed: Yes
Contiguous: Yes
Permitted: Yes
Wet space: No
Addition: No
Conversion: No

29685 Abbeywood Northwest Lane, Harvest, Alabama 35749,
United States

24 Floor 1 - W.I.C.



Max Dimensions: 6'11" x 3'7"
Calculated Area: 25 sq. ft
Included: Yes

Heated: Yes
Finished: Yes
Enclosed: Yes
Contiguous: Yes
Permitted: Yes
Wet space: No
Addition: No
Conversion: No