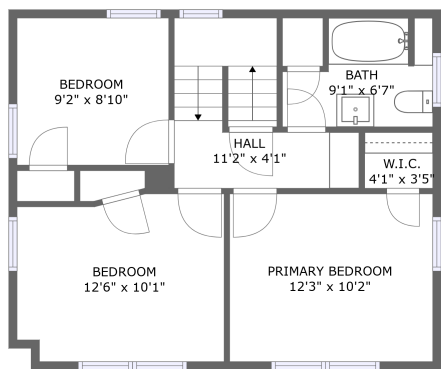
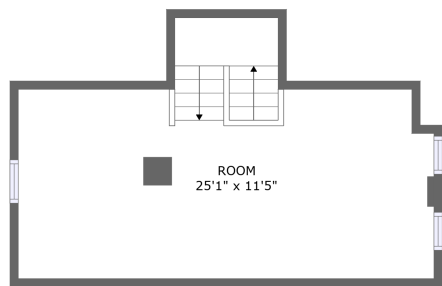


Home report

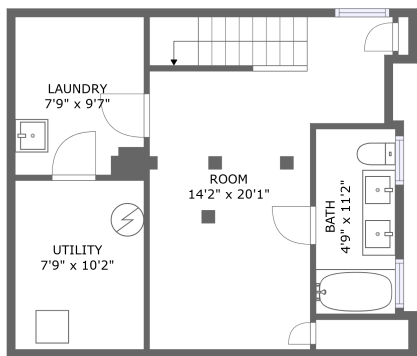
3302 Ormond Road, Cleveland Heights, Cuyahoga County, Ohio,
United States, 44118



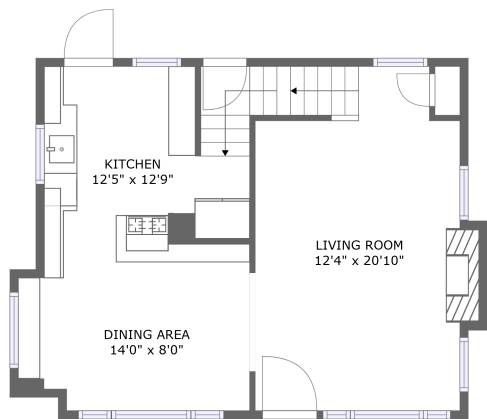
FLOOR 3



FLOOR 4



FLOOR 1



FLOOR 2

Total Area: 1628 sq. ft

Below Ground: 373 sq. ft, Floor 2: 535 sq. ft, Floor 3: 521 sq. ft, Floor 4: 199 sq. ft

Excluded: Utility 79 sq. ft, Undefined 10 sq. ft, Fireplace 8 sq. ft, Low ceiling 113 sq. ft, Walls: 177 sq. ft

Property summary

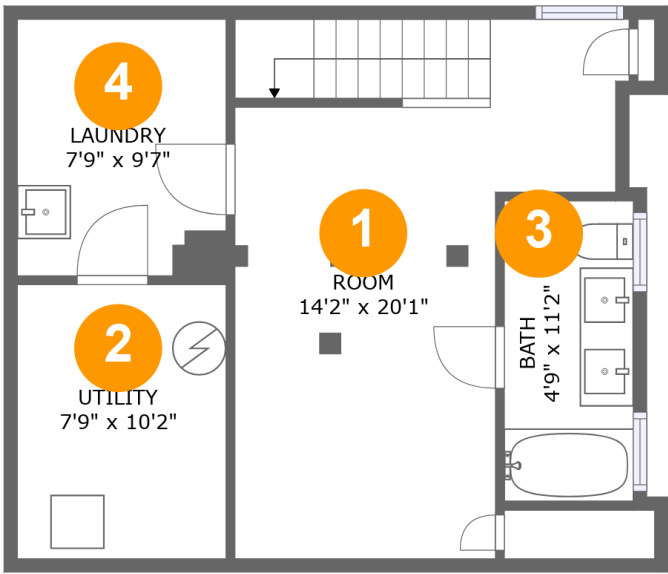
 **4** Floors

 **3** Bedrooms

 **2** Bathrooms

Home report

3302 Ormond Road, Cleveland Heights, Cuyahoga County, Ohio,
United States, 44118



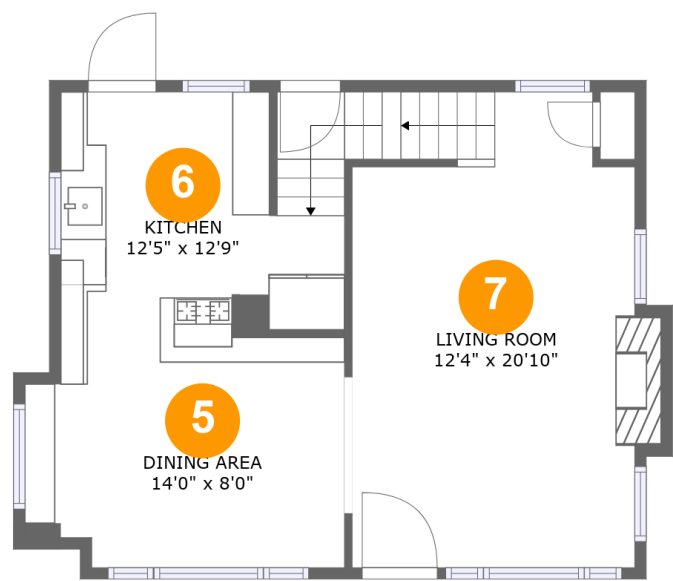
Room dimensions

Floor 1 Below ground Total:373sqft Excluded: 89sqft

#		Max Dimensions	sqft	Included
1	Room	14'2" x 20'1"	223 sq. ft	Yes
2	Utility	7'9" x 10'2"	79 sq. ft	No
3	Bath	4'9" x 11'2"	54 sq. ft	Yes
4	Laundry	7'9" x 9'7"	74 sq. ft	Yes

Home report

3302 Ormond Road, Cleveland Heights, Cuyahoga County, Ohio,
United States, 44118



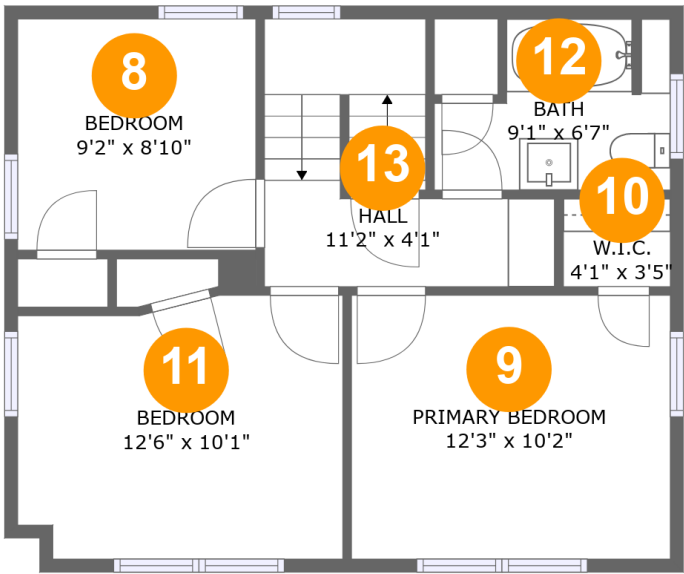
Room dimensions

Floor 2 Total:535sqft Excluded: 8sqft

#		Max Dimensions	sqft	Included
5	Dining Area	14'0" x 8'0"	108 sq. ft	Yes
6	Kitchen	12'5" x 12'9"	159 sq. ft	Yes
7	Living Room	12'4" x 20'10"	252 sq. ft	Yes

Home report

3302 Ormond Road, Cleveland Heights, Cuyahoga County, Ohio,
United States, 44118



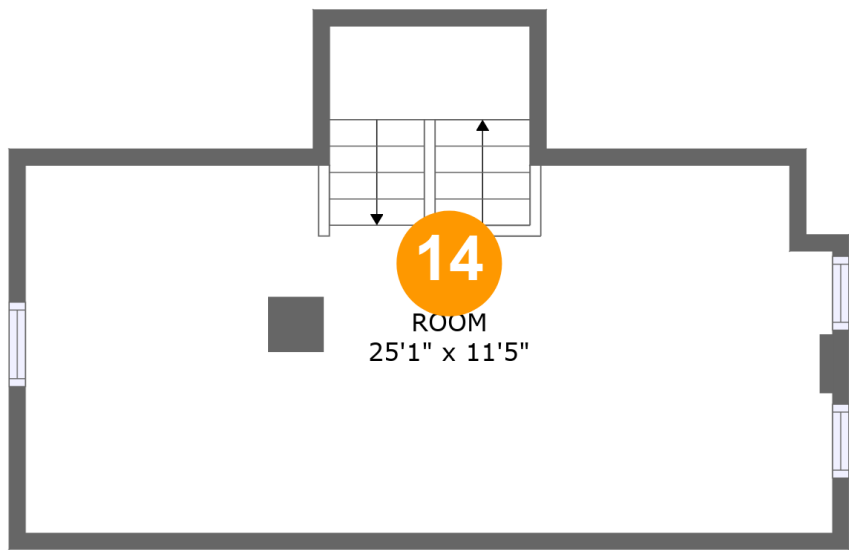
Room dimensions

Floor 3 Total:521sqft Excluded: 0sqft

#		Max Dimensions	sqft	Included
8	Bedroom	9'2" x 8'10"	81 sq. ft	Yes
9	Primary Bedroom	12'3" x 10'2"	124 sq. ft	Yes
10	W.I.C.	4'1" x 3'5"	14 sq. ft	Yes
11	Bedroom	12'6" x 10'1"	120 sq. ft	Yes
12	Bath	9'1" x 6'7"	50 sq. ft	Yes
13	Hall	11'2" x 4'1"	78 sq. ft	Yes

Home report

3302 Ormond Road, Cleveland Heights, Cuyahoga County, Ohio,
United States, 44118



Room dimensions

Floor 4 Total:199sqft Excluded: 113sqft

#		Max Dimensions	sqft	Included
14	Room	25'1" x 11'5"	198 sq. ft	Yes

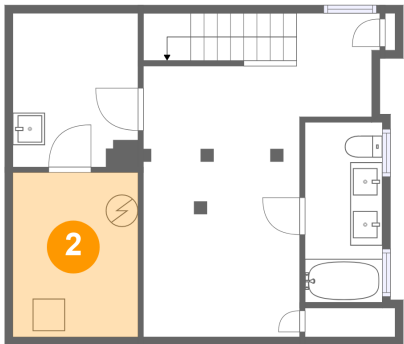
1 Floor 1 - Room



Max Dimensions: 14'2" x 20'1"
Calculated Area: 223 sq. ft
Included: Yes

Heated: Yes
Finished: Yes
Enclosed: Yes
Contiguous: Yes
Permitted: Yes
Wet space: No
Addition: No
Conversion: No

2 Floor 1 - Utility



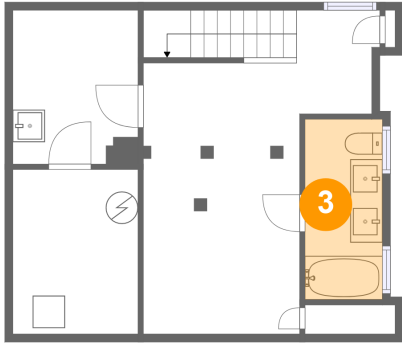
Max Dimensions: 7'9" x 10'2"
Calculated Area: 79 sq. ft
Included: No

Heated: Yes
Finished: No
Enclosed: Yes
Contiguous: Yes
Permitted: Yes
Wet space: No
Addition: No
Conversion: No

Home report

3302 Ormond Road, Cleveland Heights, Cuyahoga County, Ohio,
United States, 44118

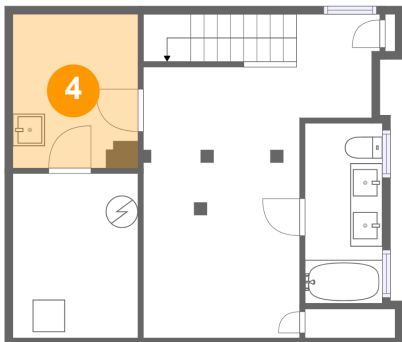
3 Floor 1 - Bath



Max Dimensions: 4'9" x 11'2"
Calculated Area: 54 sq. ft
Included: Yes

Heated: Yes
Finished: Yes
Enclosed: Yes
Contiguous: Yes
Permitted: Yes
Wet space: Yes
Addition: No
Conversion: No

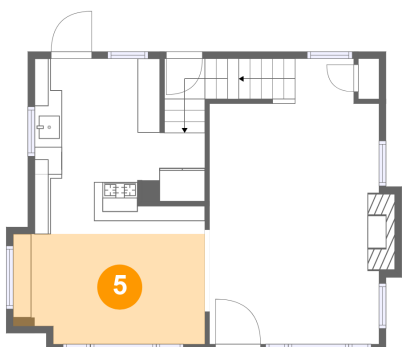
4 Floor 1 - Laundry



Max Dimensions: 7'9" x 9'7"
Calculated Area: 74 sq. ft
Included: Yes

Heated: Yes
Finished: Yes
Enclosed: Yes
Contiguous: Yes
Permitted: Yes
Wet space: No
Addition: No
Conversion: No

5 Floor 2 - Dining Area

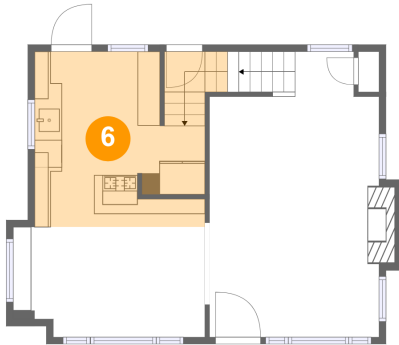


Max Dimensions: 14'0" x 8'0"
Calculated Area: 108 sq. ft
Included: Yes

Heated: Yes
Finished: Yes
Enclosed: Yes
Contiguous: Yes
Permitted: Yes
Wet space: No
Addition: No
Conversion: No

3302 Ormond Road, Cleveland Heights, Cuyahoga County, Ohio,
United States, 44118

6 Floor 2 - Kitchen



Max Dimensions: 12'5" x 12'9"
Calculated Area: 159 sq. ft
Included: Yes

Heated: Yes
Finished: Yes
Enclosed: Yes
Contiguous: Yes
Permitted: Yes
Wet space: No
Addition: No
Conversion: No

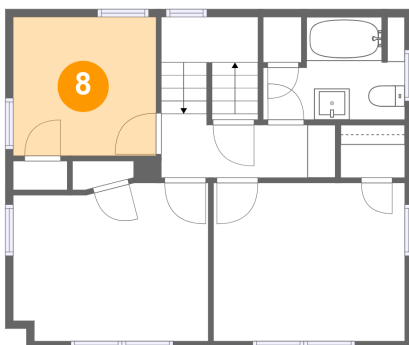
7 Floor 2 - Living Room



Max Dimensions: 12'4" x 20'10"
Calculated Area: 252 sq. ft
Included: Yes

Heated: Yes
Finished: Yes
Enclosed: Yes
Contiguous: Yes
Permitted: Yes
Wet space: No
Addition: No
Conversion: No

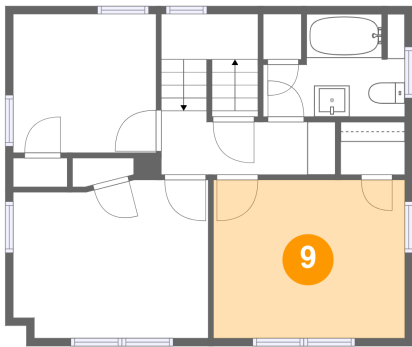
8 Floor 3 - Bedroom



Max Dimensions: 9'2" x 8'10"
Calculated Area: 81 sq. ft
Included: Yes

Heated: Yes
Finished: Yes
Enclosed: Yes
Contiguous: Yes
Permitted: Yes
Wet space: No
Addition: No
Conversion: No

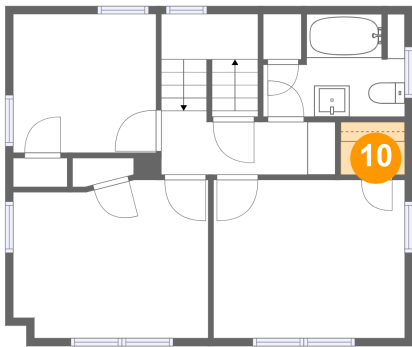
9 Floor 3 - Primary Bedroom



Max Dimensions: 12'3" x 10'2"
Calculated Area: 124 sq. ft
Included: Yes

Heated: Yes
Finished: Yes
Enclosed: Yes
Contiguous: Yes
Permitted: Yes
Wet space: No
Addition: No
Conversion: No

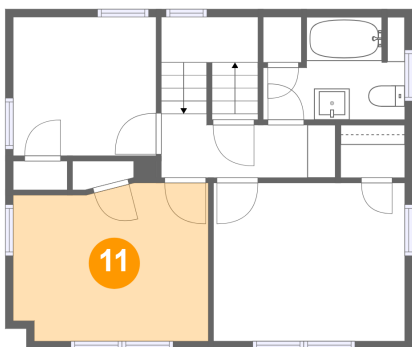
10 Floor 3 - W.I.C.



Max Dimensions: 4'1" x 3'5"
Calculated Area: 14 sq. ft
Included: Yes

Heated: Yes
Finished: Yes
Enclosed: Yes
Contiguous: Yes
Permitted: Yes
Wet space: No
Addition: No
Conversion: No

11 Floor 3 - Bedroom



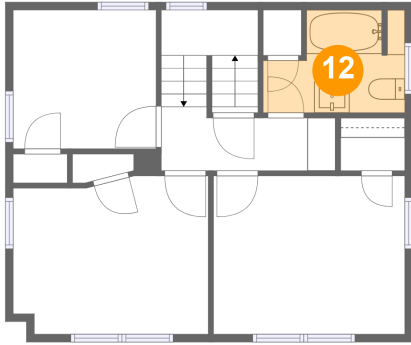
Max Dimensions: 12'6" x 10'1"
Calculated Area: 120 sq. ft
Included: Yes

Heated: Yes
Finished: Yes
Enclosed: Yes
Contiguous: Yes
Permitted: Yes
Wet space: No
Addition: No
Conversion: No

Home report

3302 Ormond Road, Cleveland Heights, Cuyahoga County, Ohio,
United States, 44118

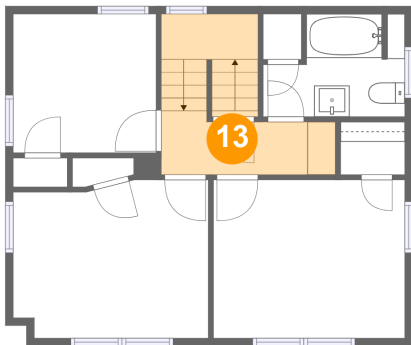
12 Floor 3 - Bath



Max Dimensions: 9'1" x 6'7"
Calculated Area: 50 sq. ft
Included: Yes

Heated: Yes
Finished: Yes
Enclosed: Yes
Contiguous: Yes
Permitted: Yes
Wet space: Yes
Addition: No
Conversion: No

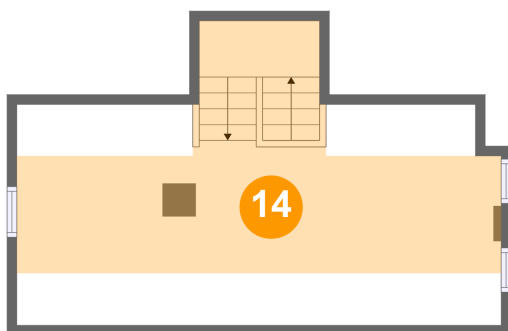
13 Floor 3 - Hall



Max Dimensions: 11'2" x 4'1"
Calculated Area: 78 sq. ft
Included: Yes

Heated: Yes
Finished: Yes
Enclosed: Yes
Contiguous: Yes
Permitted: Yes
Wet space: No
Addition: No
Conversion: No

14 Floor 4 - Room



Max Dimensions: 25'1" x 11'5"
Calculated Area: 198 sq. ft
Included: Yes

Heated: Yes
Finished: Yes
Enclosed: Yes
Contiguous: Yes
Permitted: Yes
Wet space: No
Addition: No
Conversion: No