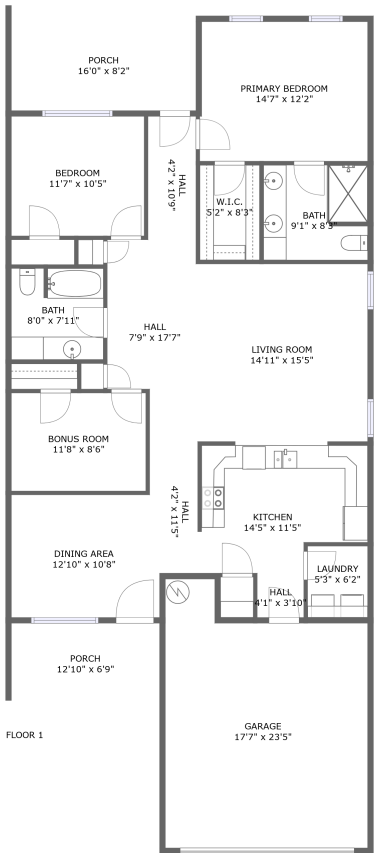



Home report


161 Villa Oak Circle,Bedford,Virginia,United States




Property summary




1
Garages



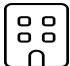
2
Bedrooms




2
Bathrooms




0
Half baths



1
Floors



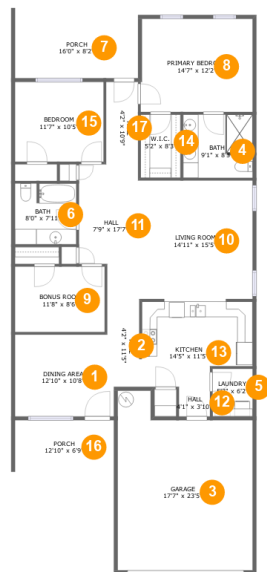
1,543
Gross living
area sqft



2,151
Total sqft

Home report

161 Villa Oak Circle,Bedford,Virginia,United States



Room dimensions

Floor 1

Total sqft: 2151

Living area: 1543

| # | | Dimensions | sqft | Counted as living area |
|----|-----------------|----------------|------------|------------------------|
| 1 | Dining Area | 12'10" x 10'8" | 134 sq. ft | Yes |
| 2 | Hall | 4'2" x 11'5" | 45 sq. ft | Yes |
| 3 | Garage | 17'7" x 23'5" | 360 sq. ft | No |
| 4 | Bath | 9'1" x 8'3" | 74 sq. ft | Yes |
| 5 | Laundry | 5'3" x 6'2" | 32 sq. ft | Yes |
| 6 | Bath | 8'0" x 7'11" | 63 sq. ft | Yes |
| 7 | Porch | 16'0" x 8'2" | 132 sq. ft | No |
| 8 | Primary Bedroom | 14'7" x 12'2" | 176 sq. ft | Yes |
| 9 | Bonus Room | 11'8" x 8'6" | 100 sq. ft | Yes |
| 10 | Living Room | 14'11" x 15'5" | 231 sq. ft | Yes |
| 11 | Hall | 7'9" x 17'7" | 118 sq. ft | Yes |

Home report

161 Villa Oak Circle, Bedford, Virginia, United States

| # | | Dimensions | sqft | Counted as living area |
|----|---------|---------------|------------|------------------------|
| 12 | Hall | 4'1" x 3'10" | 16 sq. ft | Yes |
| 13 | Kitchen | 14'5" x 11'5" | 153 sq. ft | Yes |
| 14 | W.I.C. | 5'2" x 8'3" | 43 sq. ft | Yes |
| 15 | Bedroom | 11'7" x 10'5" | 120 sq. ft | Yes |
| 16 | Porch | 12'10" x 6'9" | 87 sq. ft | No |
| 17 | Hall | 4'2" x 10'9" | 45 sq. ft | Yes |

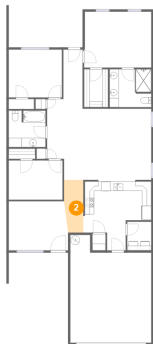
1 Floor 1 - Dining Area



Dimensions: 12'10" x 10'8"
Area: 134 sq. ft
Counted as living area: Yes

Heated: Yes
Finished: Yes
Enclosed: Yes
Contiguous: Yes
Permitted: Yes
Wet space: No
Addition: No
Conversion: No

2 Floor 1 - Hall



Dimensions: 4'2" x 11'5"
Area: 45 sq. ft
Counted as living area: Yes

Heated: Yes
Finished: Yes
Enclosed: Yes
Contiguous: Yes
Permitted: Yes
Wet space: No
Addition: No
Conversion: No

3 Floor 1 - Garage



Dimensions: 17'7" x 23'5"
Area: 360 sq. ft
Counted as living area: No

Heated: No
Finished: No
Enclosed: Yes
Contiguous: Yes
Permitted: Yes
Wet space: No
Addition: No
Conversion: No

4 Floor 1 - Bath



Dimensions: 9'1" x 8'3"
Area: 74 sq. ft
Counted as living area: Yes

Heated: Yes
Finished: Yes
Enclosed: Yes
Contiguous: Yes
Permitted: Yes
Wet space: Yes
Addition: No
Conversion: No

5 Floor 1 - Laundry



Dimensions: 5'3" x 6'2"
Area: 32 sq. ft
Counted as living area: Yes

Heated: Yes
Finished: Yes
Enclosed: Yes
Contiguous: Yes
Permitted: Yes
Wet space: No
Addition: No
Conversion: No

6 Floor 1 - Bath



Dimensions: 8'0" x 7'11"
Area: 63 sq. ft
Counted as living area: Yes

Heated: Yes
Finished: Yes
Enclosed: Yes
Contiguous: Yes
Permitted: Yes
Wet space: Yes
Addition: No
Conversion: No

7 Floor 1 - Porch



Dimensions: 16'0" x 8'2"
Area: 132 sq. ft
Counted as living area: No

Heated: No
Finished: Yes
Enclosed: No
Contiguous: Yes
Permitted: Yes
Wet space: No
Addition: No
Conversion: No

8 Floor 1 - Primary Bedroom



Dimensions: 14'7" x 12'2"
Area: 176 sq. ft
Counted as living area: Yes

Heated: Yes
Finished: Yes
Enclosed: Yes
Contiguous: Yes
Permitted: Yes
Wet space: No
Addition: No
Conversion: No

9 Floor 1 - Bonus Room



Dimensions: 11'8" x 8'6"
Area: 100 sq. ft
Counted as living area: Yes

Heated: Yes
Finished: Yes
Enclosed: Yes
Contiguous: Yes
Permitted: Yes
Wet space: No
Addition: No
Conversion: No

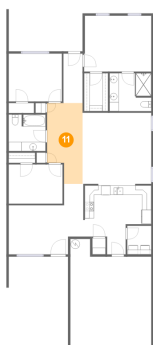
10 Floor 1 - Living Room



Dimensions: 14'11" x 15'5"
Area: 231 sq. ft
Counted as living area: Yes

Heated: Yes
Finished: Yes
Enclosed: Yes
Contiguous: Yes
Permitted: Yes
Wet space: No
Addition: No
Conversion: No

11 Floor 1 - Hall



Dimensions: 7'9" x 17'7"
Area: 118 sq. ft
Counted as living area: Yes

Heated: Yes
Finished: Yes
Enclosed: Yes
Contiguous: Yes
Permitted: Yes
Wet space: No
Addition: No
Conversion: No

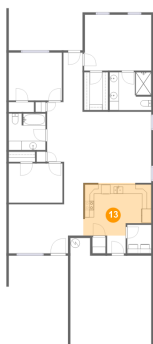
12 Floor 1 - Hall



Dimensions: 4'1" x 3'10"
Area: 16 sq. ft
Counted as living area: Yes

Heated: Yes
Finished: Yes
Enclosed: Yes
Contiguous: Yes
Permitted: Yes
Wet space: No
Addition: No
Conversion: No

13 Floor 1 - Kitchen



Dimensions: 14'5" x 11'5"
Area: 153 sq. ft
Counted as living area: Yes

Heated: Yes
Finished: Yes
Enclosed: Yes
Contiguous: Yes
Permitted: Yes
Wet space: No
Addition: No
Conversion: No

14 Floor 1 - W.I.C.



Dimensions: 5'2" x 8'3"
Area: 43 sq. ft
Counted as living area: Yes

Heated: Yes
Finished: Yes
Enclosed: Yes
Contiguous: Yes
Permitted: Yes
Wet space: No
Addition: No
Conversion: No

15 Floor 1 - Bedroom



Dimensions: 11'7" x 10'5"
Area: 120 sq. ft
Counted as living area: Yes

Heated: Yes
Finished: Yes
Enclosed: Yes
Contiguous: Yes
Permitted: Yes
Wet space: No
Addition: No
Conversion: No

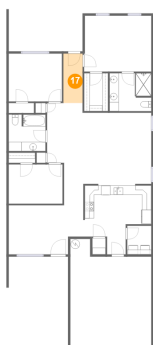
16 Floor 1 - Porch



Dimensions: 12'10" x 6'9"
Area: 87 sq. ft
Counted as living area: No

Heated: No
Finished: Yes
Enclosed: No
Contiguous: Yes
Permitted: Yes
Wet space: No
Addition: No
Conversion: No

17 Floor 1 - Hall



Dimensions: 4'2" x 10'9"
Area: 45 sq. ft
Counted as living area: Yes

Heated: Yes
Finished: Yes
Enclosed: Yes
Contiguous: Yes
Permitted: Yes
Wet space: No
Addition: No
Conversion: No