

# 3353 Southwood Village Court Southwest, Franklin, Roanoke, Roanoke, Virginia, United

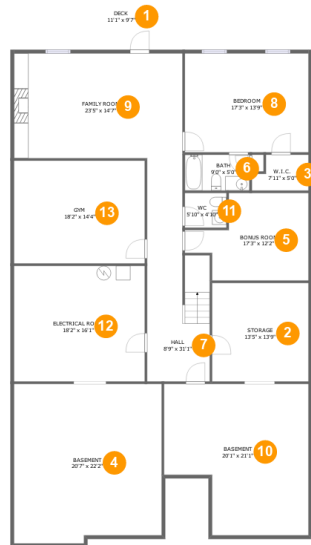


## Property Summary

**1** garages    **4** bedrooms    **4** bathrooms    **2** half baths

**3** floors    **4,679** Gross Living Area sqft    **7,013** total sqft

# 3353 Southwood Village Court Southwest, Franklin, Roanoke, Roanoke, Virginia, United



## Room Dimensions

Floor 1

Total sqft: 2927

Living area: 1852

#	Room name	Dimensions	Area (sqft)	Counted as Living Area
1	Deck	11'1" x 9'7"	106 sq. ft	No
2	Storage	13'5" x 13'9"	184 sq. ft	No
3	W.i.c.	7'11" x 5'0"	34 sq. ft	Yes
4	Basement	20'7" x 22'2"	444 sq. ft	No
5	Bonus Room	17'3" x 12'2"	164 sq. ft	Yes
6	Bath	9'0" x 5'0"	45 sq. ft	Yes
7	Hall	8'9" x 31'1"	218 sq. ft	Yes
8	Bedroom	17'3" x 13'9"	237 sq. ft	Yes
9	Family Room	23'5" x 14'7"	342 sq. ft	Yes
10	Basement	20'1" x 21'1"	368 sq. ft	Yes
11	Wc	5'10" x 4'10"	28 sq. ft	Yes

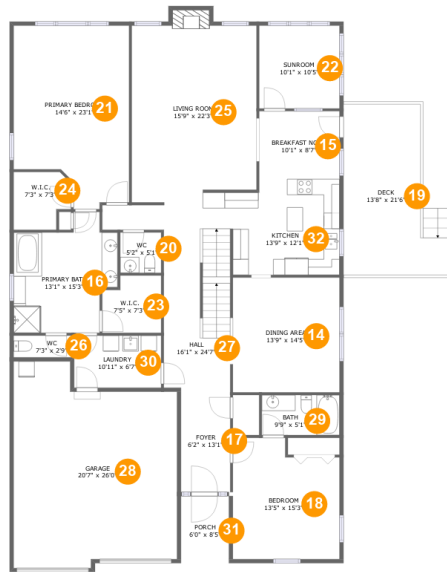
Scan captured on Thu, 22 Aug 2024 21:51:07 GMT

Information is calculated by CubiCasa technology; deemed highly reliable but not guaranteed.

**3353 Southwood Village Court Southwest,  
Franklin, Roanoke, Roanoke, Virginia, United**

#	Room name	Dimensions	Area (sqft)	Counted as Living Area
12	Electrical Room	18'2" x 16'1"	293 sq. ft	No
13	Gym	18'2" x 14'4"	261 sq. ft	Yes

# 3353 Southwood Village Court Southwest, Franklin, Roanoke, Roanoke, Virginia, United



## Room Dimensions

Floor 2

Total sqft: 3124

Living area: 2323

#	Room name	Dimensions	Area (sqft)	Counted as Living Area
14	Dining Area	13'9" x 14'5"	196 sq. ft	Yes
15	Breakfast Nook	10'1" x 8'7"	86 sq. ft	Yes
16	Primary Bath	13'1" x 15'3"	161 sq. ft	Yes
17	Foyer	6'2" x 13'1"	81 sq. ft	Yes
18	Bedroom	13'5" x 15'3"	188 sq. ft	Yes
19	Deck	13'8" x 21'6"	240 sq. ft	No
20	Wc	5'2" x 5'1"	26 sq. ft	Yes
21	Primary Bedroom	14'6" x 23'1"	296 sq. ft	Yes
22	Sunroom	10'1" x 10'5"	105 sq. ft	Yes
23	W.i.c.	7'5" x 7'3"	49 sq. ft	Yes
24	W.i.c.	7'3" x 7'3"	47 sq. ft	Yes

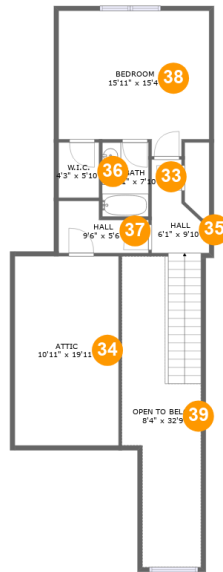
Scan captured on Thu, 22 Aug 2024 21:51:07 GMT

Information is calculated by CubiCasa technology; deemed highly reliable but not guaranteed.

**3353 Southwood Village Court Southwest,  
Franklin, Roanoke, Roanoke, Virginia, United**

#	Room name	Dimensions	Area (sqft)	Counted as Living Area
25	Living Room	15'9" x 22'3"	345 sq. ft	Yes
26	Wc	7'3" x 2'9"	20 sq. ft	Yes
27	Hall	16'1" x 24'7"	226 sq. ft	Yes
28	Garage	20'7" x 26'0"	471 sq. ft	No
29	Bath	9'9" x 5'1"	49 sq. ft	Yes
30	Laundry	10'11" x 6'7"	72 sq. ft	Yes
31	Porch	6'0" x 8'5"	51 sq. ft	No
32	Kitchen	13'9" x 12'1"	158 sq. ft	Yes

# 3353 Southwood Village Court Southwest, Franklin, Roanoke, Roanoke, Virginia, United



## Room Dimensions

Floor 3

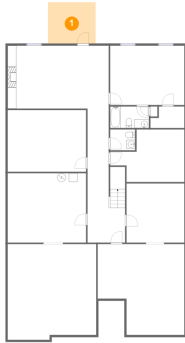
Total sqft: 962

Living area: 504

#	Room name	Dimensions	Area (sqft)	Counted as Living Area
33	Bath	4'11" x 7'10"	38 sq. ft	Yes
34	Attic	10'11" x 19'11"	117 sq. ft	No
35	Hall	6'1" x 9'10"	95 sq. ft	Yes
36	W.i.c.	4'3" x 5'10"	25 sq. ft	Yes
37	Hall	9'6" x 5'6"	42 sq. ft	Yes
38	Bedroom	15'11" x 15'4"	221 sq. ft	Yes
39	Open To Below	8'4" x 32'9"	195 sq. ft	No

# 3353 Southwood Village Court Southwest, Franklin, Roanoke, Roanoke, Virginia, United

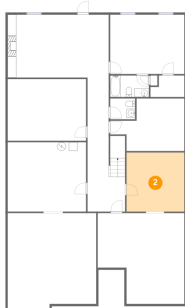
## 1 Floor 1 - Deck



Dimensions: 11'1" x 9'7"  
Area: 106 sq. ft  
Counted as Living Area: No

Heated: No  
Finished: Yes  
Enclosed: No  
Contiguous: Yes  
Permitted: Yes  
Wet Space: No  
Addition: No  
Conversion: No

## 2 Floor 1 - Storage

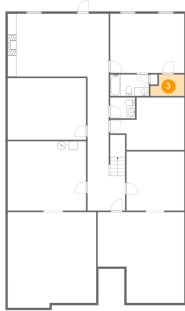


Dimensions: 13'5" x 13'9"  
Area: 184 sq. ft  
Counted as Living Area: No

Heated: No  
Finished: No  
Enclosed: No  
Contiguous: No  
Permitted: Yes  
Wet Space: No  
Addition: No  
Conversion: No

# 3353 Southwood Village Court Southwest, Franklin, Roanoke, Roanoke, Virginia, United

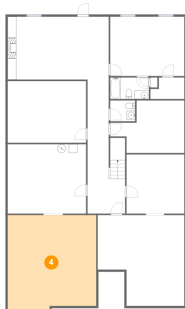
## 3 Floor 1 - W.i.c.



Dimensions: 7'11" x 5'0"  
Area: 34 sq. ft  
Counted as Living Area:  
Yes

Heated: Yes  
Finished: Yes  
Enclosed: Yes  
Contiguous:  
Yes  
Permitted: Yes  
Wet Space: No  
Addition: No  
Conversion: No

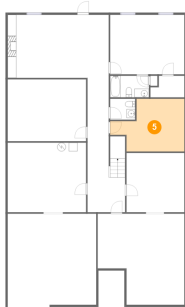
## 4 Floor 1 - Basement



Dimensions: 20'7" x 22'2"  
Area: 444 sq. ft  
Counted as Living Area: No

Heated: Yes  
Finished: No  
Enclosed: Yes  
Contiguous: Yes  
Permitted: Yes  
Wet Space: No  
Addition: No  
Conversion: No

## 5 Floor 1 - Bonus Room



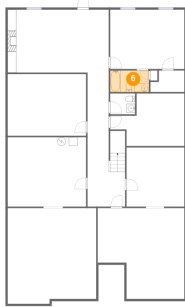
Dimensions: 17'3" x 12'2"  
Area: 164 sq. ft  
Counted as Living Area:  
Yes

Heated: Yes  
Finished: Yes  
Enclosed: Yes  
Contiguous:  
Yes  
Permitted: Yes  
Wet Space: No  
Addition: No  
Conversion: No



# 3353 Southwood Village Court Southwest, Franklin, Roanoke, Roanoke, Virginia, United

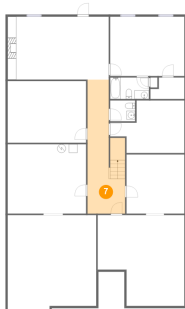
## 6 Floor 1 - Bath



Dimensions: 9'0" x 5'0"  
Area: 45 sq. ft  
Counted as Living Area:  
Yes

Heated: Yes  
Finished: Yes  
Enclosed: Yes  
Contiguous:  
Yes  
Permitted: Yes  
Wet Space: Yes  
Addition: No  
Conversion: No

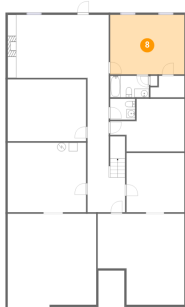
## 7 Floor 1 - Hall



Dimensions: 8'9" x 31'1"  
Area: 218 sq. ft  
Counted as Living Area:  
Yes

Heated: Yes  
Finished: Yes  
Enclosed: Yes  
Contiguous:  
Yes  
Permitted: Yes  
Wet Space: No  
Addition: No  
Conversion: No

## 8 Floor 1 - Bedroom

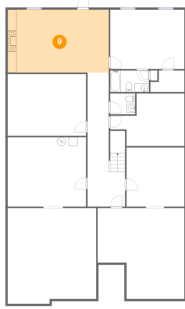


Dimensions: 17'3" x 13'9"  
Area: 237 sq. ft  
Counted as Living Area:  
Yes

Heated: Yes  
Finished: Yes  
Enclosed: Yes  
Contiguous:  
Yes  
Permitted: Yes  
Wet Space: No  
Addition: No  
Conversion: No

# 3353 Southwood Village Court Southwest, Franklin, Roanoke, Roanoke, Virginia, United

## 9 Floor 1 - Family Room



Dimensions: 23'5" x 14'7"  
Area: 342 sq. ft  
Counted as Living Area:  
Yes

Heated: Yes  
Finished: Yes  
Enclosed: Yes  
Contiguous:  
Yes  
Permitted: Yes  
Wet Space: No  
Addition: No  
Conversion: No

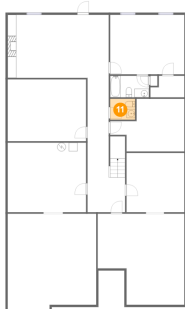
## 10 Floor 1 - Basement



Dimensions: 20'1" x 21'1"  
Area: 368 sq. ft  
Counted as Living Area:  
Yes

Heated: Yes  
Finished: Yes  
Enclosed: Yes  
Contiguous:  
Yes  
Permitted: Yes  
Wet Space: No  
Addition: No  
Conversion: No

## 11 Floor 1 - Wc

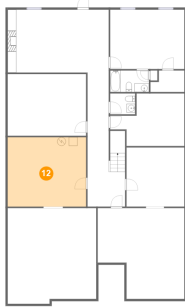


Dimensions: 5'10" x 4'10"  
Area: 28 sq. ft  
Counted as Living Area:  
Yes

Heated: Yes  
Finished: Yes  
Enclosed: Yes  
Contiguous:  
Yes  
Permitted: Yes  
Wet Space: Yes  
Addition: No  
Conversion: No

# 3353 Southwood Village Court Southwest, Franklin, Roanoke, Roanoke, Virginia, United

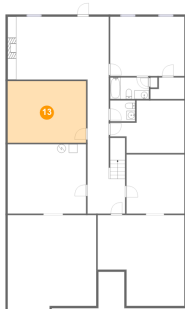
## 12 Floor 1 - Electrical Room



Dimensions: 18'2" x 16'1"  
Area: 293 sq. ft  
Counted as Living Area: No

Heated: No  
Finished: No  
Enclosed: Yes  
Contiguous: Yes  
Permitted: Yes  
Wet Space: No  
Addition: No  
Conversion: No

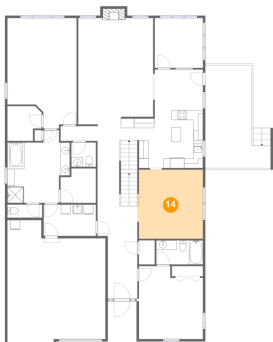
## 13 Floor 1 - Gym



Dimensions: 18'2" x 14'4"  
Area: 261 sq. ft  
Counted as Living Area:  
Yes

Heated: Yes  
Finished: Yes  
Enclosed: Yes  
Contiguous:  
Yes  
Permitted: Yes  
Wet Space: No  
Addition: No  
Conversion: No

## 14 Floor 2 - Dining Area

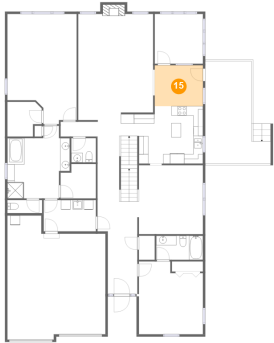


Dimensions: 13'9" x 14'5"  
Area: 196 sq. ft  
Counted as Living Area:  
Yes

Heated: Yes  
Finished: Yes  
Enclosed: Yes  
Contiguous:  
Yes  
Permitted: Yes  
Wet Space: No  
Addition: No  
Conversion: No

# 3353 Southwood Village Court Southwest, Franklin, Roanoke, Roanoke, Virginia, United

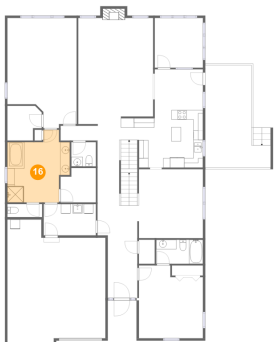
## 15 Floor 2 - Breakfast Nook



Dimensions: 10'1" x 8'7"  
Area: 86 sq. ft  
Counted as Living Area:  
Yes

Heated: Yes  
Finished: Yes  
Enclosed: Yes  
Contiguous:  
Yes  
Permitted: Yes  
Wet Space: No  
Addition: No  
Conversion: No

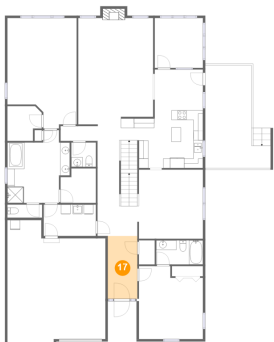
## 16 Floor 2 - Primary Bath



Dimensions: 13'1" x 15'3"  
Area: 161 sq. ft  
Counted as Living Area:  
Yes

Heated: Yes  
Finished: Yes  
Enclosed: Yes  
Contiguous:  
Yes  
Permitted: Yes  
Wet Space: Yes  
Addition: No  
Conversion: No

## 17 Floor 2 - Foyer

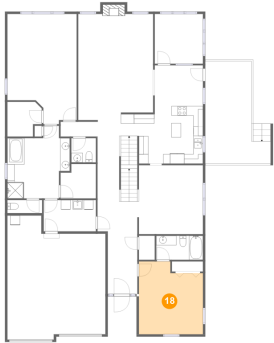


Dimensions: 6'2" x 13'1"  
Area: 81 sq. ft  
Counted as Living Area:  
Yes

Heated: Yes  
Finished: Yes  
Enclosed: Yes  
Contiguous:  
Yes  
Permitted: Yes  
Wet Space: No  
Addition: No  
Conversion: No

# 3353 Southwood Village Court Southwest, Franklin, Roanoke, Roanoke, Virginia, United

## 18 Floor 2 - Bedroom



Dimensions: 13'5" x 15'3"  
Area: 188 sq. ft  
Counted as Living Area:  
Yes

Heated: Yes  
Finished: Yes  
Enclosed: Yes  
Contiguous:  
Yes  
Permitted: Yes  
Wet Space: No  
Addition: No  
Conversion: No

## 19 Floor 2 - Deck



Dimensions: 13'8" x 21'6"  
Area: 240 sq. ft  
Counted as Living Area: No

Heated: No  
Finished: Yes  
Enclosed: No  
Contiguous: Yes  
Permitted: Yes  
Wet Space: No  
Addition: No  
Conversion: No

## 20 Floor 2 - Wc

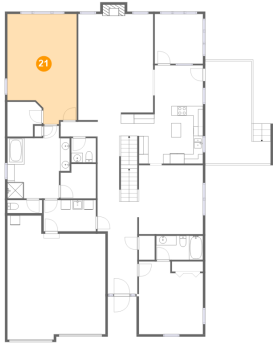


Dimensions: 5'2" x 5'1"  
Area: 26 sq. ft  
Counted as Living Area:  
Yes

Heated: Yes  
Finished: Yes  
Enclosed: Yes  
Contiguous:  
Yes  
Permitted: Yes  
Wet Space: Yes  
Addition: No  
Conversion: No

# 3353 Southwood Village Court Southwest, Franklin, Roanoke, Roanoke, Virginia, United

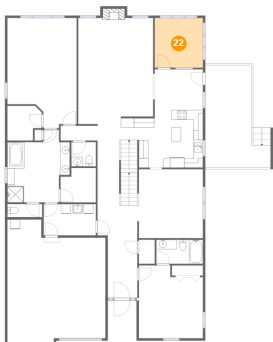
## 21 Floor 2 - Primary Bedroom



Dimensions: 14'6" x 23'1"  
Area: 296 sq. ft  
Counted as Living Area:  
Yes

Heated: Yes  
Finished: Yes  
Enclosed: Yes  
Contiguous:  
Yes  
Permitted: Yes  
Wet Space: No  
Addition: No  
Conversion: No

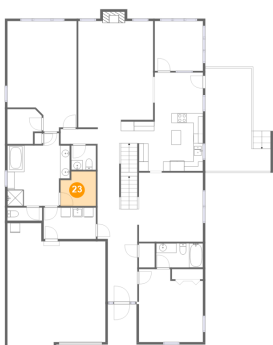
## 22 Floor 2 - Sunroom



Dimensions: 10'1" x 10'5"  
Area: 105 sq. ft  
Counted as Living Area:  
Yes

Heated: Yes  
Finished: Yes  
Enclosed: Yes  
Contiguous:  
Yes  
Permitted: Yes  
Wet Space: No  
Addition: No  
Conversion: No

## 23 Floor 2 - W.i.c.



Dimensions: 7'5" x 7'3"  
Area: 49 sq. ft  
Counted as Living Area:  
Yes

Heated: Yes  
Finished: Yes  
Enclosed: Yes  
Contiguous:  
Yes  
Permitted: Yes  
Wet Space: No  
Addition: No  
Conversion: No

# 3353 Southwood Village Court Southwest, Franklin, Roanoke, Roanoke, Virginia, United

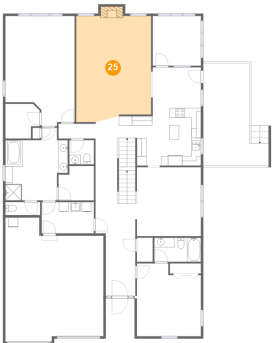
## 24 Floor 2 - W.i.c.



Dimensions: 7'3" x 7'3"  
Area: 47 sq. ft  
Counted as Living Area:  
Yes

Heated: Yes  
Finished: Yes  
Enclosed: Yes  
Contiguous:  
Yes  
Permitted: Yes  
Wet Space: No  
Addition: No  
Conversion: No

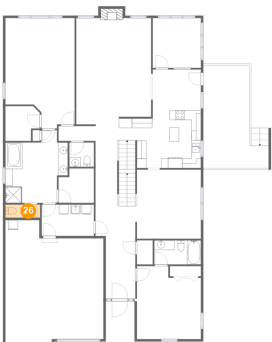
## 25 Floor 2 - Living Room



Dimensions: 15'9" x 22'3"  
Area: 345 sq. ft  
Counted as Living Area:  
Yes

Heated: Yes  
Finished: Yes  
Enclosed: Yes  
Contiguous:  
Yes  
Permitted: Yes  
Wet Space: No  
Addition: No  
Conversion: No

## 26 Floor 2 - Wc

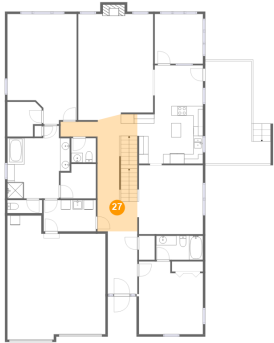


Dimensions: 7'3" x 2'9"  
Area: 20 sq. ft  
Counted as Living Area:  
Yes

Heated: Yes  
Finished: Yes  
Enclosed: Yes  
Contiguous:  
Yes  
Permitted: Yes  
Wet Space: Yes  
Addition: No  
Conversion: No

# 3353 Southwood Village Court Southwest, Franklin, Roanoke, Roanoke, Virginia, United

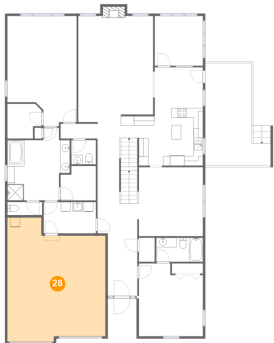
## 27 Floor 2 - Hall



Dimensions: 16'1" x 24'7"  
Area: 226 sq. ft  
Counted as Living Area:  
Yes

Heated: Yes  
Finished: Yes  
Enclosed: Yes  
Contiguous:  
Yes  
Permitted: Yes  
Wet Space: No  
Addition: No  
Conversion: No

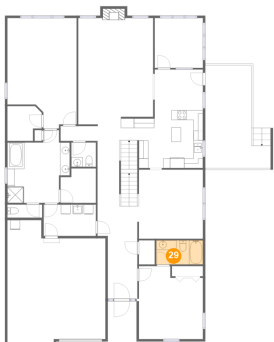
## 28 Floor 2 - Garage



Dimensions: 20'7" x 26'0"  
Area: 471 sq. ft  
Counted as Living Area: No

Heated: No  
Finished: No  
Enclosed: Yes  
Contiguous: Yes  
Permitted: Yes  
Wet Space: No  
Addition: No  
Conversion: No

## 29 Floor 2 - Bath



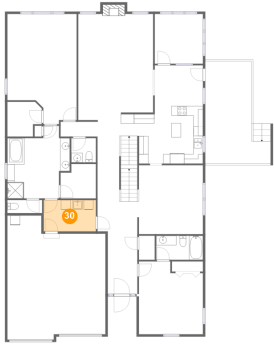
Dimensions: 9'9" x 5'1"  
Area: 49 sq. ft  
Counted as Living Area:  
Yes

Heated: Yes  
Finished: Yes  
Enclosed: Yes  
Contiguous:  
Yes  
Permitted: Yes  
Wet Space: Yes  
Addition: No  
Conversion: No



# 3353 Southwood Village Court Southwest, Franklin, Roanoke, Roanoke, Virginia, United

## 30 Floor 2 - Laundry



Dimensions: 10'11" x 6'7"  
Area: 72 sq. ft  
Counted as Living Area:  
Yes

Heated: Yes  
Finished: Yes  
Enclosed: Yes  
Contiguous:  
Yes  
Permitted: Yes  
Wet Space: No  
Addition: No  
Conversion: No

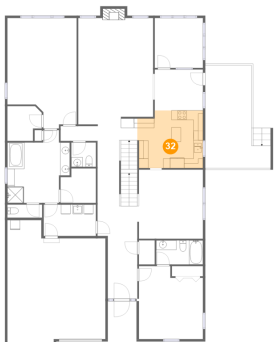
## 31 Floor 2 - Porch



Dimensions: 6'0" x 8'5"  
Area: 51 sq. ft  
Counted as Living Area: No

Heated: No  
Finished: Yes  
Enclosed: No  
Contiguous: Yes  
Permitted: Yes  
Wet Space: No  
Addition: No  
Conversion: No

## 32 Floor 2 - Kitchen

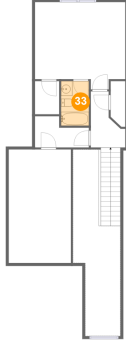


Dimensions: 13'9" x 12'1"  
Area: 158 sq. ft  
Counted as Living Area:  
Yes

Heated: Yes  
Finished: Yes  
Enclosed: Yes  
Contiguous:  
Yes  
Permitted: Yes  
Wet Space: No  
Addition: No  
Conversion: No

# 3353 Southwood Village Court Southwest, Franklin, Roanoke, Roanoke, Virginia, United

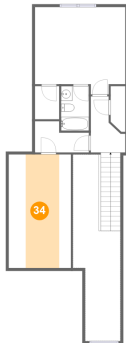
## 33 Floor 3 - Bath



Dimensions: 4'11" x 7'10"  
Area: 38 sq. ft  
Counted as Living Area:  
Yes

Heated: Yes  
Finished: Yes  
Enclosed: Yes  
Contiguous:  
Yes  
Permitted: Yes  
Wet Space: Yes  
Addition: No  
Conversion: No

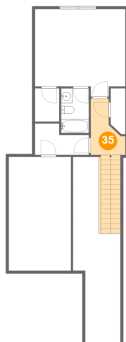
## 34 Floor 3 - Attic



Dimensions: 10'11" x 19'11"  
Area: 117 sq. ft  
Counted as Living Area: No

Heated: No  
Finished: No  
Enclosed: Yes  
Contiguous: Yes  
Permitted: Yes  
Wet Space: No  
Addition: No  
Conversion: No

## 35 Floor 3 - Hall



Dimensions: 6'1" x 9'10"  
Area: 95 sq. ft  
Counted as Living Area:  
Yes

Heated: Yes  
Finished: Yes  
Enclosed: Yes  
Contiguous:  
Yes  
Permitted: Yes  
Wet Space: No  
Addition: No  
Conversion: No

# 3353 Southwood Village Court Southwest, Franklin, Roanoke, Roanoke, Virginia, United

## 36 Floor 3 - W.i.c.



Dimensions: 4'3" x 5'10"  
Area: 25 sq. ft  
Counted as Living Area:  
Yes

Heated: Yes  
Finished: Yes  
Enclosed: Yes  
Contiguous:  
Yes  
Permitted: Yes  
Wet Space: No  
Addition: No  
Conversion: No

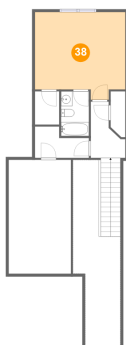
## 37 Floor 3 - Hall



Dimensions: 9'6" x 5'6"  
Area: 42 sq. ft  
Counted as Living Area:  
Yes

Heated: Yes  
Finished: Yes  
Enclosed: Yes  
Contiguous:  
Yes  
Permitted: Yes  
Wet Space: No  
Addition: No  
Conversion: No

## 38 Floor 3 - Bedroom



Dimensions: 15'11" x 15'4"  
Area: 221 sq. ft  
Counted as Living Area:  
Yes

Heated: Yes  
Finished: Yes  
Enclosed: Yes  
Contiguous:  
Yes  
Permitted: Yes  
Wet Space: No  
Addition: No  
Conversion: No

# 3353 Southwood Village Court Southwest, Franklin, Roanoke, Roanoke, Virginia, United

## 39 Floor 3 - Open To Below



Dimensions: 8'4" x 32'9"  
Area: 195 sq. ft  
Counted as Living Area: No

Heated: No  
Finished: No  
Enclosed: No  
Contiguous: Yes  
Permitted: No  
Wet Space: No  
Addition: No  
Conversion: No