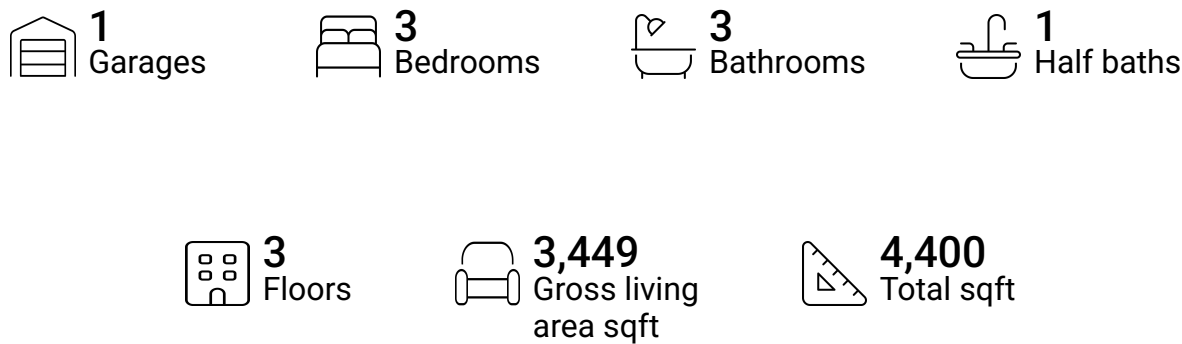


Home report

74 McDonnell Cres,Bradford West Gwillimbury,ON,CA

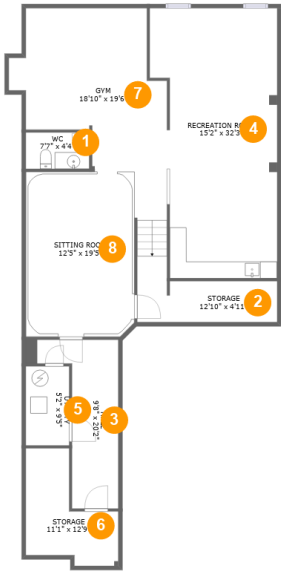


Property summary



Home report

74 McDonnell Cres,Bradford West Gwillimbury,ON,CA



Room dimensions

Floor 1

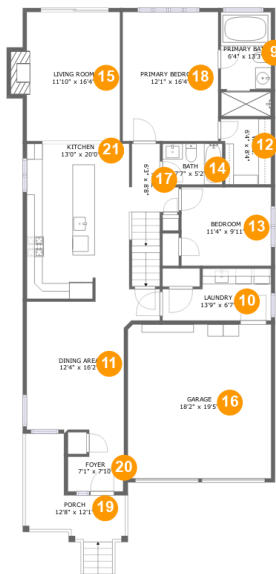
Total sqft: 1549

Living area: 1301

| # |                 | Max Dimensions | sqft       | Included |
|---|-----------------|----------------|------------|----------|
| 1 | WC              | 7'7" x 4'4"    | 33 sq. ft  | Yes      |
| 2 | Storage         | 12'10" x 4'11" | 63 sq. ft  | No       |
| 3 | Hall            | 9'8" x 20'2"   | 127 sq. ft | Yes      |
| 4 | Recreation Room | 15'2" x 32'3"  | 434 sq. ft | Yes      |
| 5 | Utility         | 5'2" x 9'5"    | 49 sq. ft  | No       |
| 6 | Storage         | 11'1" x 12'9"  | 103 sq. ft | No       |
| 7 | Gym             | 18'10" x 19'6" | 346 sq. ft | Yes      |
| 8 | Sitting Room    | 12'5" x 19'5"  | 254 sq. ft | Yes      |

Home report

74 McDonnell Cres,Bradford West Gwillimbury,ON,CA



Room dimensions

Floor 2

Total sqft: 2013

Living area: 1526

| #  |                 | Max Dimensions | sqft       | Included |
|----|-----------------|----------------|------------|----------|
| 9  | Primary Bath    | 6'4" x 13'3"   | 83 sq. ft  | Yes      |
| 10 | Laundry         | 13'9" x 6'7"   | 77 sq. ft  | Yes      |
| 11 | Dining Area     | 12'4" x 16'2"  | 211 sq. ft | Yes      |
| 12 | W.I.C.          | 6'4" x 8'4"    | 50 sq. ft  | Yes      |
| 13 | Bedroom         | 11'4" x 9'11"  | 113 sq. ft | Yes      |
| 14 | Bath            | 7'7" x 5'2"    | 39 sq. ft  | Yes      |
| 15 | Living Room     | 11'10" x 16'4" | 204 sq. ft | Yes      |
| 16 | Garage          | 18'2" x 19'5"  | 353 sq. ft | No       |
| 17 | Hall            | 6'3" x 8'8"    | 74 sq. ft  | Yes      |
| 18 | Primary Bedroom | 12'1" x 16'4"  | 198 sq. ft | Yes      |
| 19 | Porch           | 12'8" x 12'1"  | 102 sq. ft | No       |

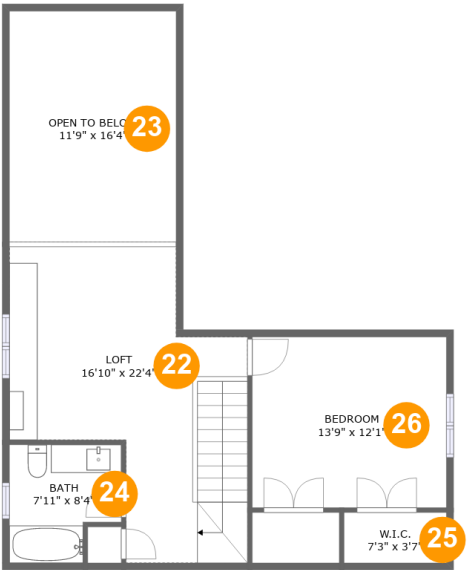
Home report

74 McDonnell Cres,Bradford West Gwillimbury,ON,CA

| #  |         | Max Dimensions | sqft       | Included |
|----|---------|----------------|------------|----------|
| 20 | Foyer   | 7'1" x 7'10"   | 46 sq. ft  | Yes      |
| 21 | Kitchen | 13'0" x 20'0"  | 256 sq. ft | Yes      |

Home report

74 McDonnell Cres,Bradford West Gwillimbury,ON,CA



Room dimensions

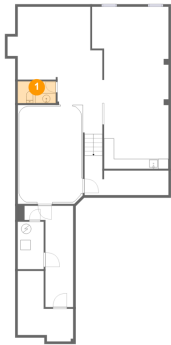
Floor 3

Total sqft: 838

Living area: 622

| #  |               | Max Dimensions | sqft       | Included |
|----|---------------|----------------|------------|----------|
| 22 | Loft          | 16'10" x 22'4" | 277 sq. ft | Yes      |
| 23 | Open To Below | 11'9" x 16'4"  | 193 sq. ft | No       |
| 24 | Bath          | 7'11" x 8'4"   | 58 sq. ft  | Yes      |
| 25 | W.I.C.        | 7'3" x 3'7"    | 26 sq. ft  | Yes      |
| 26 | Bedroom       | 13'9" x 12'1"  | 166 sq. ft | Yes      |

1 Floor 1 - WC



Max Dimensions: 7'7" x 4'4"  
Calculated Area: 33 sq. ft  
Included: Yes

Heated: Yes  
Finished: Yes  
Enclosed: Yes  
Contiguous: Yes  
Permitted: Yes  
Wet space: Yes  
Addition: No  
Conversion: No

2 Floor 1 - Storage



Max Dimensions: 12'10" x 4'11"  
Calculated Area: 63 sq. ft  
Included: No

Heated: No  
Finished: No  
Enclosed: No  
Contiguous: Yes  
Permitted: Yes  
Wet space: No  
Addition: No  
Conversion: No

3 Floor 1 - Hall



Max Dimensions: 9'8" x 20'2"  
Calculated Area: 127 sq. ft  
Included: Yes

Heated: Yes  
Finished: Yes  
Enclosed: Yes  
Contiguous: Yes  
Permitted: Yes  
Wet space: No  
Addition: No  
Conversion: No

4 Floor 1 - Recreation Room



Max Dimensions: 15'2" x 32'3"  
Calculated Area: 434 sq. ft  
Included: Yes

Heated: Yes  
Finished: Yes  
Enclosed: Yes  
Contiguous: Yes  
Permitted: Yes  
Wet space: No  
Addition: No  
Conversion: No

5 Floor 1 - Utility



Max Dimensions: 5'2" x 9'5"  
Calculated Area: 49 sq. ft  
Included: No

Heated: Yes  
Finished: No  
Enclosed: Yes  
Contiguous: Yes  
Permitted: Yes  
Wet space: No  
Addition: No  
Conversion: No

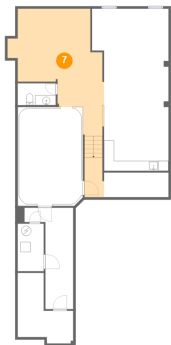
6 Floor 1 - Storage



Max Dimensions: 11'1" x 12'9"  
Calculated Area: 103 sq. ft  
Included: No

Heated: No  
Finished: No  
Enclosed: No  
Contiguous: Yes  
Permitted: Yes  
Wet space: No  
Addition: No  
Conversion: No

7 Floor 1 - Gym



Max Dimensions: 18'10" x 19'6"  
Calculated Area: 346 sq. ft  
Included: Yes

Heated: Yes  
Finished: Yes  
Enclosed: Yes  
Contiguous: Yes  
Permitted: Yes  
Wet space: No  
Addition: No  
Conversion: No

8 Floor 1 - Sitting Room



Max Dimensions: 12'5" x 19'5"  
Calculated Area: 254 sq. ft  
Included: Yes

Heated: Yes  
Finished: Yes  
Enclosed: Yes  
Contiguous: Yes  
Permitted: Yes  
Wet space: No  
Addition: No  
Conversion: No



9 Floor 2 - Primary Bath



Max Dimensions: 6'4" x 13'3"  
Calculated Area: 83 sq. ft  
Included: Yes

Heated: Yes  
Finished: Yes  
Enclosed: Yes  
Contiguous: Yes  
Permitted: Yes  
Wet space: Yes  
Addition: No  
Conversion: No

10 Floor 2 - Laundry



Max Dimensions: 13'9" x 6'7"  
Calculated Area: 77 sq. ft  
Included: Yes

Heated: Yes  
Finished: Yes  
Enclosed: Yes  
Contiguous: Yes  
Permitted: Yes  
Wet space: No  
Addition: No  
Conversion: No

11 Floor 2 - Dining Area



Max Dimensions: 12'4" x 16'2"  
Calculated Area: 211 sq. ft  
Included: Yes

Heated: Yes  
Finished: Yes  
Enclosed: Yes  
Contiguous: Yes  
Permitted: Yes  
Wet space: No  
Addition: No  
Conversion: No

## 12 Floor 2 - W.I.C.



Max Dimensions: 6'4" x 8'4"  
Calculated Area: 50 sq. ft  
Included: Yes

Heated: Yes  
Finished: Yes  
Enclosed: Yes  
Contiguous: Yes  
Permitted: Yes  
Wet space: No  
Addition: No  
Conversion: No

## 13 Floor 2 - Bedroom



Max Dimensions: 11'4" x 9'11"  
Calculated Area: 113 sq. ft  
Included: Yes

Heated: Yes  
Finished: Yes  
Enclosed: Yes  
Contiguous: Yes  
Permitted: Yes  
Wet space: No  
Addition: No  
Conversion: No

## 14 Floor 2 - Bath



Max Dimensions: 7'7" x 5'2"  
Calculated Area: 39 sq. ft  
Included: Yes

Heated: Yes  
Finished: Yes  
Enclosed: Yes  
Contiguous: Yes  
Permitted: Yes  
Wet space: Yes  
Addition: No  
Conversion: No

15 Floor 2 - Living Room



Max Dimensions: 11'10" x 16'4"  
Calculated Area: 204 sq. ft  
Included: Yes

Heated: Yes  
Finished: Yes  
Enclosed: Yes  
Contiguous: Yes  
Permitted: Yes  
Wet space: No  
Addition: No  
Conversion: No

16 Floor 2 - Garage



Max Dimensions: 18'2" x 19'5"  
Calculated Area: 353 sq. ft  
Included: No

Heated: No  
Finished: No  
Enclosed: Yes  
Contiguous: Yes  
Permitted: Yes  
Wet space: No  
Addition: No  
Conversion: No

17 Floor 2 - Hall



Max Dimensions: 6'3" x 8'8"  
Calculated Area: 74 sq. ft  
Included: Yes

Heated: Yes  
Finished: Yes  
Enclosed: Yes  
Contiguous: Yes  
Permitted: Yes  
Wet space: No  
Addition: No  
Conversion: No

18 Floor 2 - Primary Bedroom



Max Dimensions: 12'1" x 16'4"  
Calculated Area: 198 sq. ft  
Included: Yes

Heated: Yes  
Finished: Yes  
Enclosed: Yes  
Contiguous: Yes  
Permitted: Yes  
Wet space: No  
Addition: No  
Conversion: No

19 Floor 2 - Porch



Max Dimensions: 12'8" x 12'1"  
Calculated Area: 102 sq. ft  
Included: No

Heated: No  
Finished: Yes  
Enclosed: No  
Contiguous: Yes  
Permitted: Yes  
Wet space: No  
Addition: No  
Conversion: No

20 Floor 2 - Foyer



Max Dimensions: 7'1" x 7'10"  
Calculated Area: 46 sq. ft  
Included: Yes

Heated: Yes  
Finished: Yes  
Enclosed: Yes  
Contiguous: Yes  
Permitted: Yes  
Wet space: No  
Addition: No  
Conversion: No

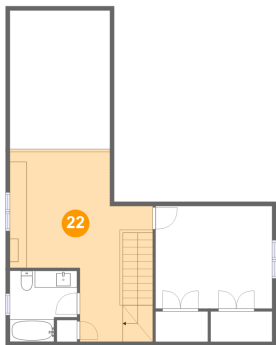
21 Floor 2 - Kitchen



Max Dimensions: 13'0" x 20'0"  
Calculated Area: 256 sq. ft  
Included: Yes

Heated: Yes  
Finished: Yes  
Enclosed: Yes  
Contiguous: Yes  
Permitted: Yes  
Wet space: No  
Addition: No  
Conversion: No

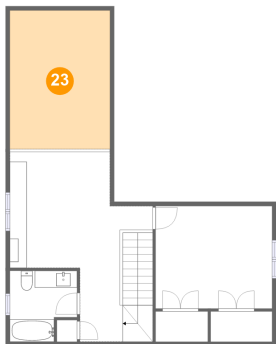
22 Floor 3 - Loft



Max Dimensions: 16'10" x 22'4"  
Calculated Area: 277 sq. ft  
Included: Yes

Heated: Yes  
Finished: Yes  
Enclosed: Yes  
Contiguous: Yes  
Permitted: Yes  
Wet space: No  
Addition: No  
Conversion: No

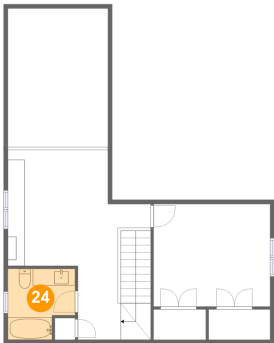
23 Floor 3 - Open To Below



Max Dimensions: 11'9" x 16'4"  
Calculated Area: 193 sq. ft  
Included: No

Heated: No  
Finished: No  
Enclosed: No  
Contiguous: Yes  
Permitted: No  
Wet space: No  
Addition: No  
Conversion: No

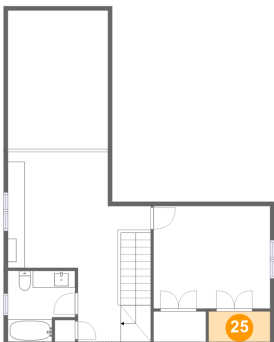
24 Floor 3 - Bath



Max Dimensions: 7'11" x 8'4"  
Calculated Area: 58 sq. ft  
Included: Yes

Heated: Yes  
Finished: Yes  
Enclosed: Yes  
Contiguous: Yes  
Permitted: Yes  
Wet space: Yes  
Addition: No  
Conversion: No

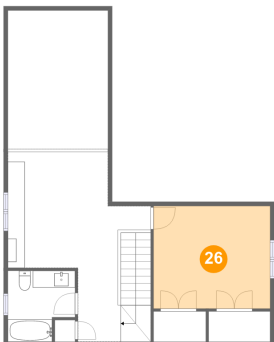
25 Floor 3 - W.I.C.



Max Dimensions: 7'3" x 3'7"  
Calculated Area: 26 sq. ft  
Included: Yes

Heated: Yes  
Finished: Yes  
Enclosed: Yes  
Contiguous: Yes  
Permitted: Yes  
Wet space: No  
Addition: No  
Conversion: No

26 Floor 3 - Bedroom



Max Dimensions: 13'9" x 12'1"  
Calculated Area: 166 sq. ft  
Included: Yes

Heated: Yes  
Finished: Yes  
Enclosed: Yes  
Contiguous: Yes  
Permitted: Yes  
Wet space: No  
Addition: No  
Conversion: No