

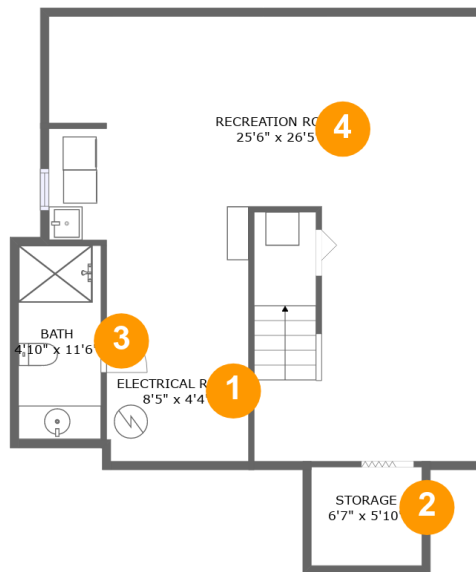
6833 Madison Ave, West Mifflin, PA, US



Property Summary

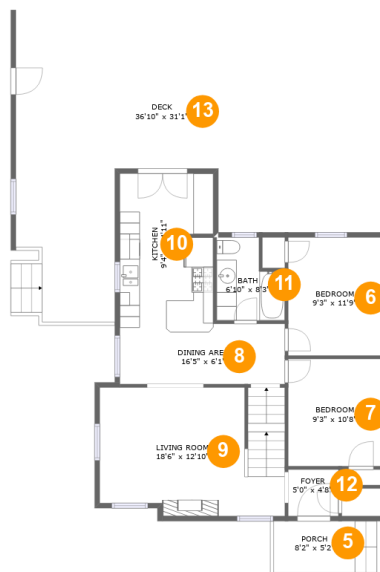
0 garages **3** bedrooms **3** bathrooms **0** half baths

3 floors **1,367** Gross Living Area sqft **3,097** total sqft

6833 Madison Ave, West Mifflin, PA, US**Room Dimensions****Floor 1****Total sqft: 793****Living area: 0**

#	Room name	Dimensions	Area (sqft)	Counted as Living Area
1	Electrical Room	8'5" x 4'4"	48 sq. ft	No
2	Storage	6'7" x 5'10"	39 sq. ft	No
3	Bath	4'10" x 11'6"	57 sq. ft	No
4	Recreation Room	25'6" x 26'5"	571 sq. ft	No

6833 Madison Ave, West Mifflin, PA, US



Room Dimensions

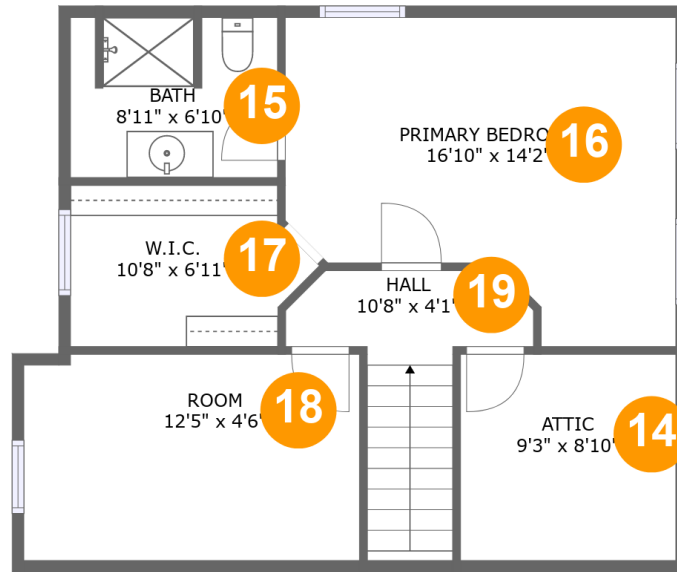
Floor 2

Total sqft: 1627

Living area: 864

#	Room name	Dimensions	Area (sqft)	Counted as Living Area
5	Porch	8'2" x 5'2"	42 sq. ft	No
6	Bedroom	9'3" x 11'9"	109 sq. ft	Yes
7	Bedroom	9'3" x 10'8"	99 sq. ft	Yes
8	Dining Area	16'5" x 6'1"	99 sq. ft	Yes
9	Living Room	18'6" x 12'10"	227 sq. ft	Yes
10	Kitchen	9'4" x 14'11"	138 sq. ft	Yes
11	Bath	6'10" x 8'3"	48 sq. ft	Yes
12	Foyer	5'0" x 4'8"	23 sq. ft	Yes
13	Deck	36'10" x 31'1"	721 sq. ft	No

6833 Madison Ave, West Mifflin, PA, US



Room Dimensions

Floor 3

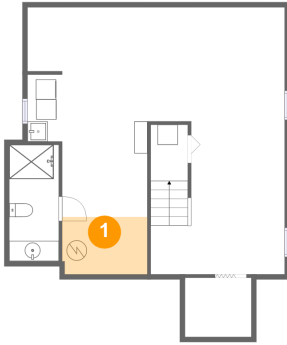
Total sqft: 677

Living area: 503

#	Room name	Dimensions	Area (sqft)	Counted as Living Area
14	Attic	9'3" x 8'10"	42 sq. ft	No
15	Bath	8'11" x 6'10"	59 sq. ft	Yes
16	Primary Bedroom	16'10" x 14'2"	198 sq. ft	Yes
17	W.i.c.	10'8" x 6'11"	65 sq. ft	Yes
18	Room	12'5" x 4'6"	56 sq. ft	Yes
19	Hall	10'8" x 4'1"	66 sq. ft	Yes

6833 Madison Ave, West Mifflin, PA, US

1 Floor 1 - Electrical Room



Dimensions: 8'5" x 4'4"
Area: 48 sq. ft
Counted as Living Area: No

Heated: No
Finished: No
Enclosed: Yes
Contiguous: Yes
Permitted: Yes
Wet Space: No
Addition: No
Conversion: No

2 Floor 1 - Storage



Dimensions: 6'7" x 5'10"
Area: 39 sq. ft
Counted as Living Area: No

Heated: No
Finished: No
Enclosed: No
Contiguous: Yes
Permitted: Yes
Wet Space: No
Addition: No
Conversion: No

6833 Madison Ave, West Mifflin, PA, US

3 Floor 1 - Bath



Dimensions: 4'10" x 11'6"
Area: 57 sq. ft
Counted as Living Area: No

Heated: Yes
Finished: Yes
Enclosed: Yes
Contiguous: No
Permitted: Yes
Wet Space: Yes
Addition: No
Conversion: No

4 Floor 1 - Recreation Room



Dimensions: 25'6" x 26'5"
Area: 571 sq. ft
Counted as Living Area: No

Heated: Yes
Finished: Yes
Enclosed: Yes
Contiguous: No
Permitted: Yes
Wet Space: No
Addition: No
Conversion: No

5 Floor 2 - Porch

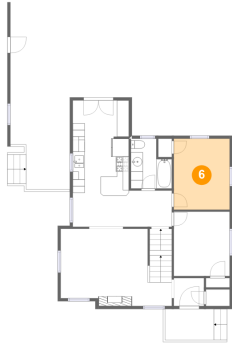


Dimensions: 8'2" x 5'2"
Area: 42 sq. ft
Counted as Living Area: No

Heated: No
Finished: Yes
Enclosed: No
Contiguous: Yes
Permitted: Yes
Wet Space: No
Addition: No
Conversion: No

6833 Madison Ave, West Mifflin, PA, US

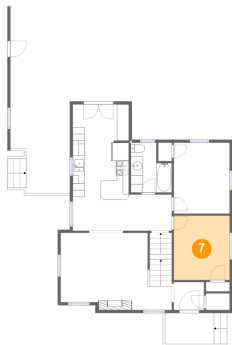
6 Floor 2 - Bedroom



Dimensions: 9'3" x 11'9"
Area: 109 sq. ft
Counted as Living Area:
Yes

Heated: Yes
Finished: Yes
Enclosed: Yes
Contiguous:
Yes
Permitted: Yes
Wet Space: No
Addition: No
Conversion: No

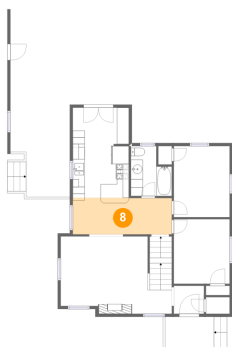
7 Floor 2 - Bedroom



Dimensions: 9'3" x 10'8"
Area: 99 sq. ft
Counted as Living Area:
Yes

Heated: Yes
Finished: Yes
Enclosed: Yes
Contiguous:
Yes
Permitted: Yes
Wet Space: No
Addition: No
Conversion: No

8 Floor 2 - Dining Area



Dimensions: 16'5" x 6'1"
Area: 99 sq. ft
Counted as Living Area:
Yes

Heated: Yes
Finished: Yes
Enclosed: Yes
Contiguous:
Yes
Permitted: Yes
Wet Space: No
Addition: No
Conversion: No

6833 Madison Ave, West Mifflin, PA, US

9 Floor 2 - Living Room



Dimensions: 18'6" x 12'10"
Area: 227 sq. ft
Counted as Living Area:
Yes

Heated: Yes
Finished: Yes
Enclosed: Yes
Contiguous:
Yes
Permitted: Yes
Wet Space: No
Addition: No
Conversion: No

10 Floor 2 - Kitchen



Dimensions: 9'4" x 14'11"
Area: 138 sq. ft
Counted as Living Area:
Yes

Heated: Yes
Finished: Yes
Enclosed: Yes
Contiguous:
Yes
Permitted: Yes
Wet Space: No
Addition: No
Conversion: No

11 Floor 2 - Bath



Dimensions: 6'10" x 8'3"
Area: 48 sq. ft
Counted as Living Area:
Yes

Heated: Yes
Finished: Yes
Enclosed: Yes
Contiguous:
Yes
Permitted: Yes
Wet Space: Yes
Addition: No
Conversion: No

6833 Madison Ave, West Mifflin, PA, US

12 Floor 2 - Foyer



Dimensions: 5'0" x 4'8"
Area: 23 sq. ft
Counted as Living Area: Yes

Heated: Yes
Finished: Yes
Enclosed: Yes
Contiguous: Yes
Permitted: Yes
Wet Space: No
Addition: No
Conversion: No

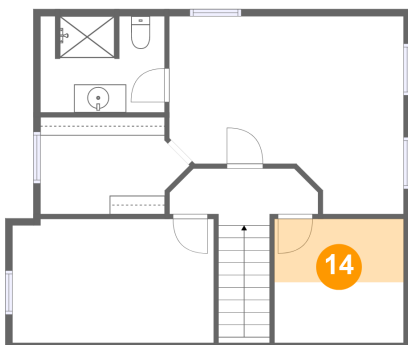
13 Floor 2 - Deck



Dimensions: 36'10" x 31'1"
Area: 721 sq. ft
Counted as Living Area: No

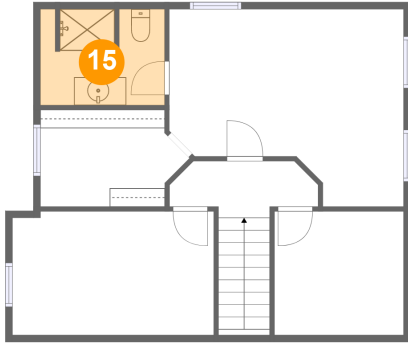
Heated: No
Finished: Yes
Enclosed: No
Contiguous: Yes
Permitted: Yes
Wet Space: No
Addition: No
Conversion: No

14 Floor 3 - Attic



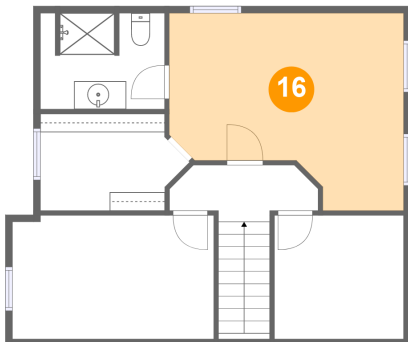
Dimensions: 9'3" x 8'10"
Area: 42 sq. ft
Counted as Living Area: No

Heated: No
Finished: No
Enclosed: Yes
Contiguous: Yes
Permitted: Yes
Wet Space: No
Addition: No
Conversion: No

6833 Madison Ave, West Mifflin, PA, US**15 Floor 3 - Bath**

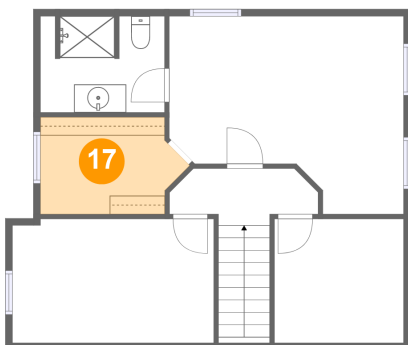
Dimensions: 8'11" x 6'10"
Area: 59 sq. ft
Counted as Living Area:
Yes

Heated: Yes
Finished: Yes
Enclosed: Yes
Contiguous:
Yes
Permitted: Yes
Wet Space: Yes
Addition: No
Conversion: No

16 Floor 3 - Primary Bedroom

Dimensions: 16'10" x 14'2"
Area: 198 sq. ft
Counted as Living Area:
Yes

Heated: Yes
Finished: Yes
Enclosed: Yes
Contiguous:
Yes
Permitted: Yes
Wet Space: No
Addition: No
Conversion: No

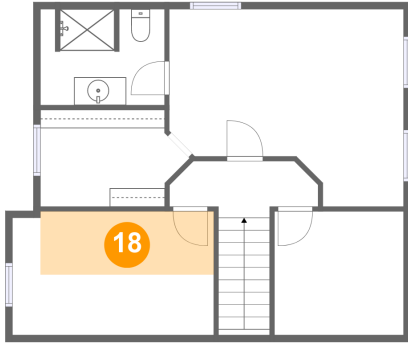
17 Floor 3 - W.i.c.

Dimensions: 10'8" x 6'11"
Area: 65 sq. ft
Counted as Living Area:
Yes

Heated: Yes
Finished: Yes
Enclosed: Yes
Contiguous:
Yes
Permitted: Yes
Wet Space: No
Addition: No
Conversion: No

6833 Madison Ave, West Mifflin, PA, US

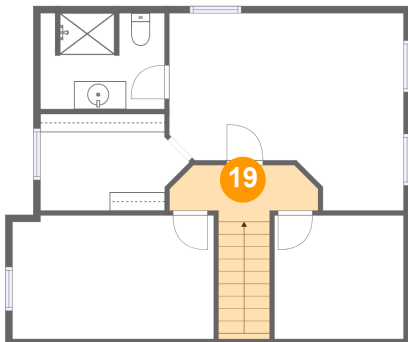
18 Floor 3 - Room



Dimensions: 12'5" x 4'6"
Area: 56 sq. ft
Counted as Living Area:
Yes

Heated: Yes
Finished: Yes
Enclosed: Yes
Contiguous:
Yes
Permitted: Yes
Wet Space: No
Addition: No
Conversion: No

19 Floor 3 - Hall



Dimensions: 10'8" x 4'1"
Area: 66 sq. ft
Counted as Living Area:
Yes

Heated: Yes
Finished: Yes
Enclosed: Yes
Contiguous:
Yes
Permitted: Yes
Wet Space: No
Addition: No
Conversion: No