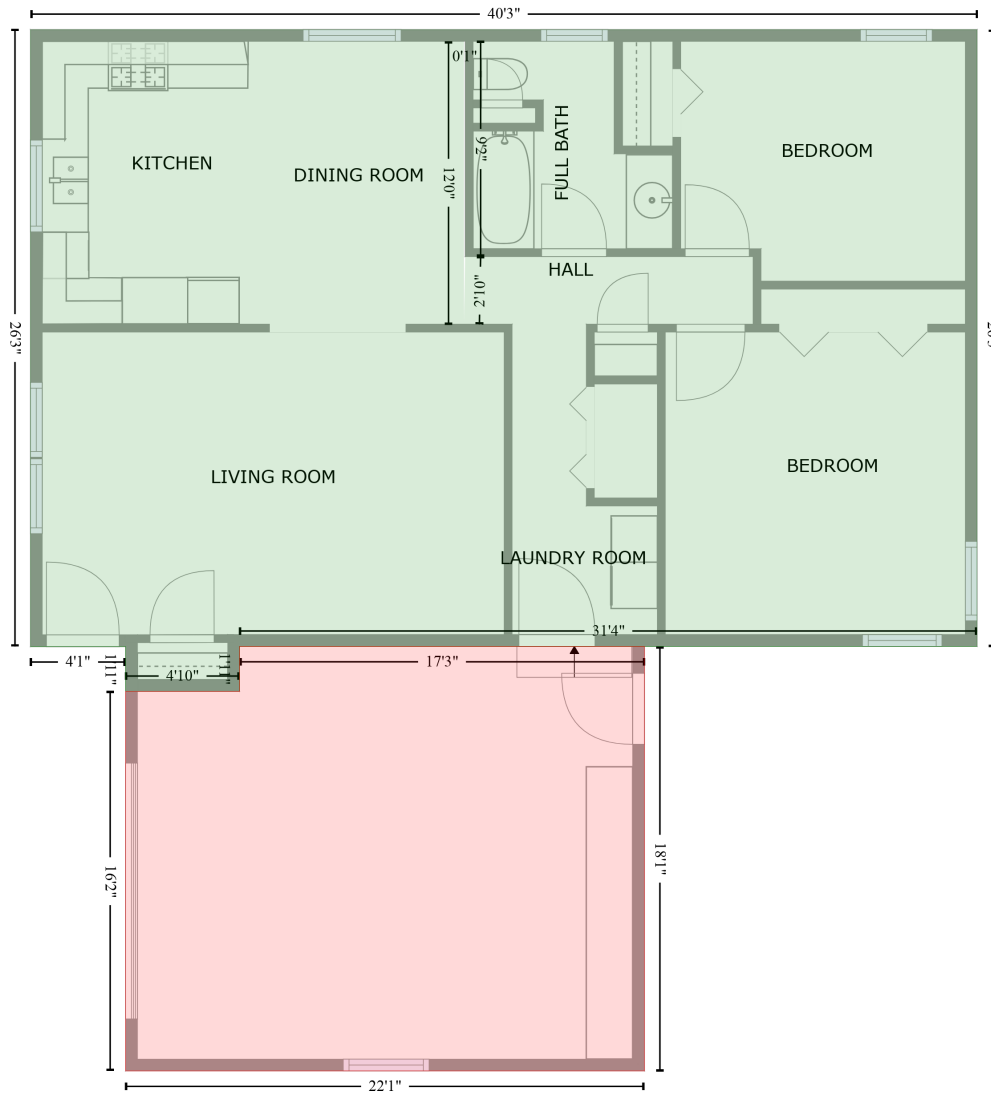


405 S White St, Sidney, IL, US

Gross Living Area: 1064 sq. ft

FLOOR 1
[AREA: 1064]



GARAGE (1)
[AREA: 389]

Space	Area (sq. ft)	Calculation <small>Coordinate Polygon Area Algorithm using inches</small>
FLOOR 1 (Living area)	1064	$-\left((531.3 + 531.3) * (-2 - 312.7) + (531.3 + 155.1) * (312.7 - 312.7) + (155.1 + 155.1) * (312.7 - 335.7) + (155.1 + 97) * (335.7 - 335.7) + (97 + 97) * (335.7 - 312.8) + (97 + 48.5) * (312.8 - 312.8) + (48.5 + 48.5) * (312.8 - -2) + (48.5 + 531.3) * (-2 - -2)\right) * 0.5 * 0.00694 + -\left((270.2 + 269.6) * (4 - 4) + (269.6 + 269.6) * (4 - 148.3) + (269.6 + 270.2) * (148.3 - 113.8) + (270.2 + 270.2) * (113.8 - 4)\right) * 0.5 * 0.00694$
GARAGE	389	$-\left((361.7 + 361.7) * (312.7 - 529.3) + (361.7 + 97) * (529.3 - 529.3) + (97 + 97) * (529.3 - 335.7) + \right)$

405 S White St, Sidney, IL, US

Gross Living Area: 1064 sq. ft

Space	Area (sq. ft)	Calculation <small>Coordinate Polygon Area Algorithm using inches</small>
(Non-living area)		$(97 + 155.1) * (335.7 - 335.7) + (155.1 + 155.1) * (335.7 - 312.7) + (155.1 + 361.7) * (312.7 - 312.7) * 0.5 * 0.00694$