


1135 Algonquin Blvd, Peterborough, ON, CA



Property summary

 **1** Garages

 **2** Bedrooms

 **1** Bathrooms

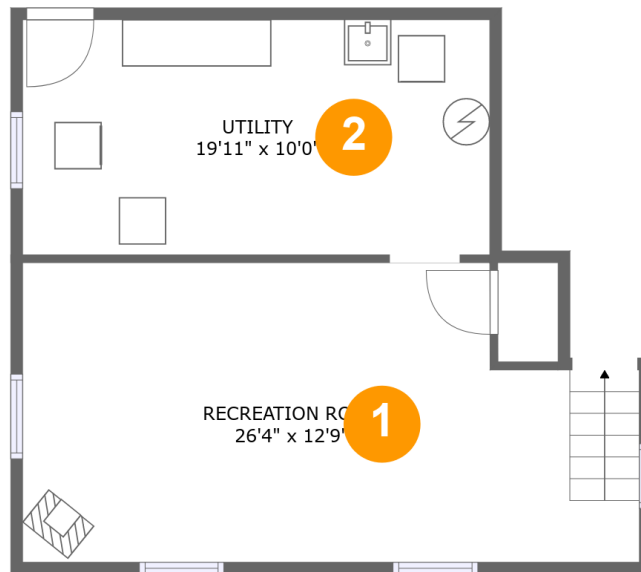
 **0** Half baths

 **3** Floors

 **1,088** Gross living area sqft

 **2,106** Total sqft

1135 Algonquin Blvd, Peterborough, ON, CA



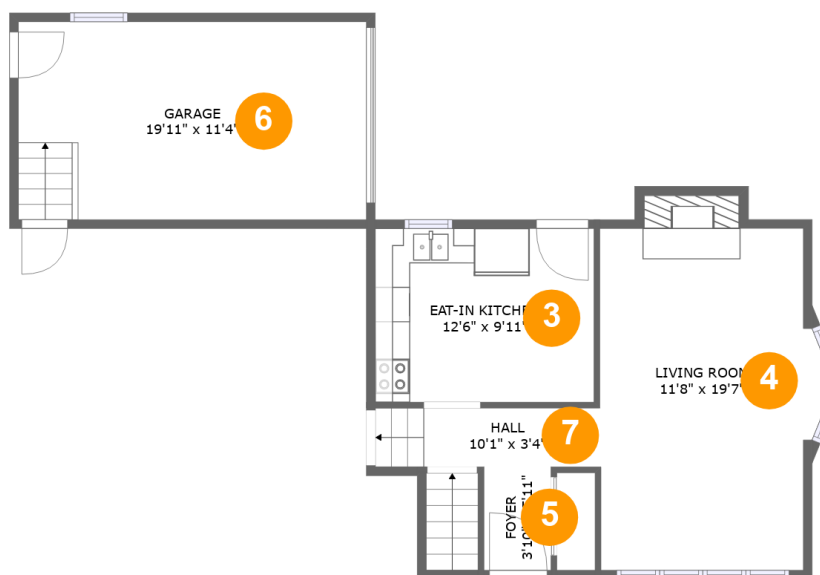
Room dimensions

Floor 1

Total sqft: 577

Living area: 0

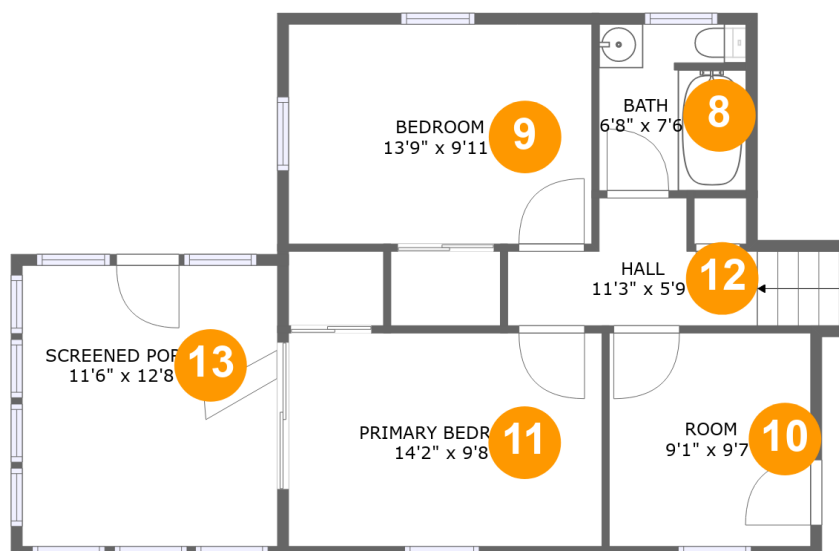
#		Dimensions	sqft	Counted as living area
1	Recreation Room	26'4" x 12'9"	307 sq. ft	No
2	Utility	19'11" x 10'0"	200 sq. ft	No

1135 Algonquin Blvd, Peterborough, ON, CA**Room dimensions**

Floor 2

Total sqft: 783 Living area: 507

#		Dimensions	sqft	Counted as living area
3	Eat-in Kitchen	12'6" x 9'11"	124 sq. ft	Yes
4	Living Room	11'8" x 19'7"	238 sq. ft	Yes
5	Foyer	3'10" x 5'11"	23 sq. ft	Yes
6	Garage	19'11" x 11'4"	225 sq. ft	No
7	Hall	10'1" x 3'4"	43 sq. ft	Yes

1135 Algonquin Blvd, Peterborough, ON, CA**Room dimensions**

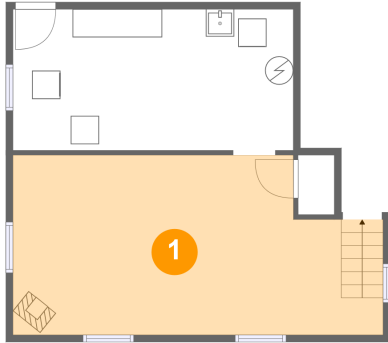
Floor 3

Total sqft: 746 Living area: 581

#		Dimensions	sqft	Counted as living area
8	Bath	6'8" x 7'6"	49 sq. ft	Yes
9	Bedroom	13'9" x 9'11"	136 sq. ft	Yes
10	Room	9'1" x 9'7"	88 sq. ft	Yes
11	Primary Bedroom	14'2" x 9'8"	137 sq. ft	Yes
12	Hall	11'3" x 5'9"	60 sq. ft	Yes
13	Screened Porch	11'6" x 12'8"	147 sq. ft	No

1135 Algonquin Blvd, Peterborough, ON, CA

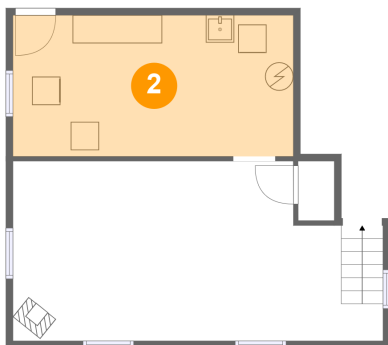
1 Floor 1 - Recreation Room



Dimensions: 26'4" x 12'9"
Area: 307 sq. ft
Counted as living area: No

Heated: Yes
Finished: Yes
Enclosed: Yes
Contiguous: No
Permitted: Yes
Wet space: No
Addition: No
Conversion: No

2 Floor 1 - Utility

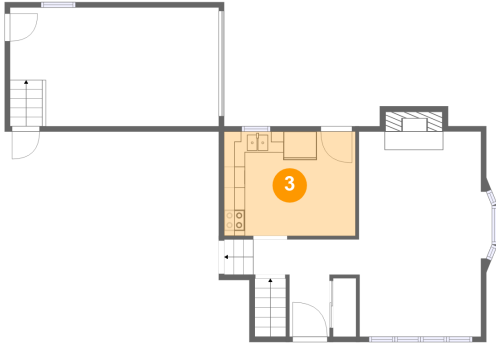


Dimensions: 19'11" x 10'0"
Area: 200 sq. ft
Counted as living area: No

Heated: Yes
Finished: No
Enclosed: Yes
Contiguous: Yes
Permitted: Yes
Wet space: No
Addition: No
Conversion: No

1135 Algonquin Blvd, Peterborough, ON, CA

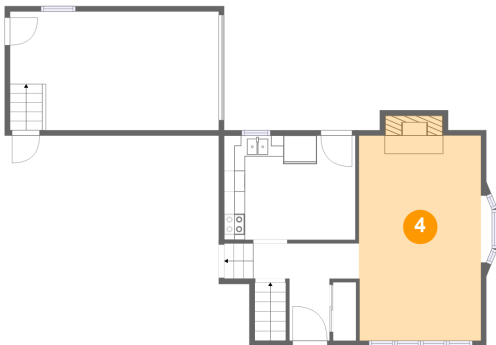
3 Floor 2 - Eat-in Kitchen



Dimensions: 12'6" x 9'11"
Area: 124 sq. ft
Counted as living area: Yes

Heated: Yes
Finished: Yes
Enclosed: Yes
Contiguous: Yes
Permitted: Yes
Wet space: No
Addition: No
Conversion: No

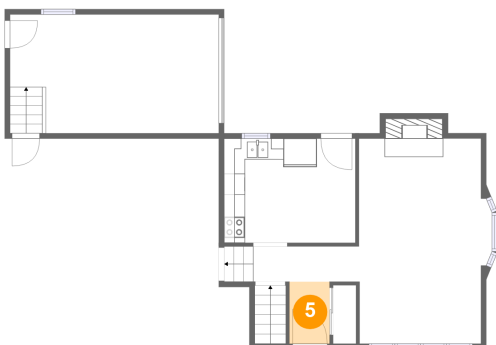
4 Floor 2 - Living Room



Dimensions: 11'8" x 19'7"
Area: 238 sq. ft
Counted as living area: Yes

Heated: Yes
Finished: Yes
Enclosed: Yes
Contiguous: Yes
Permitted: Yes
Wet space: No
Addition: No
Conversion: No

5 Floor 2 - Foyer

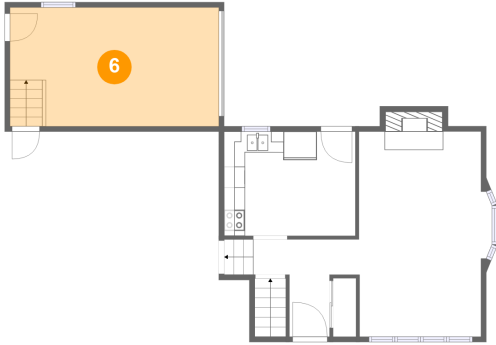


Dimensions: 3'10" x 5'11"
Area: 23 sq. ft
Counted as living area: Yes

Heated: Yes
Finished: Yes
Enclosed: Yes
Contiguous: Yes
Permitted: Yes
Wet space: No
Addition: No
Conversion: No

1135 Algonquin Blvd, Peterborough, ON, CA

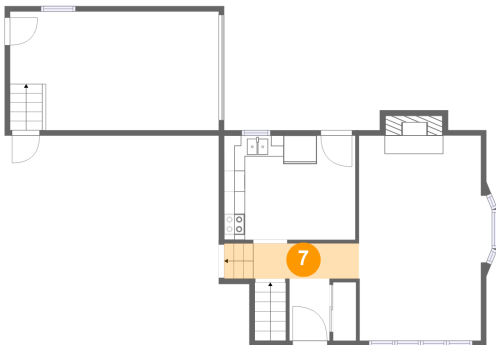
6 Floor 2 - Garage



Dimensions: 19'11" x 11'4"
Area: 225 sq. ft
Counted as living area: No

Heated: No
Finished: No
Enclosed: Yes
Contiguous: Yes
Permitted: Yes
Wet space: No
Addition: No
Conversion: No

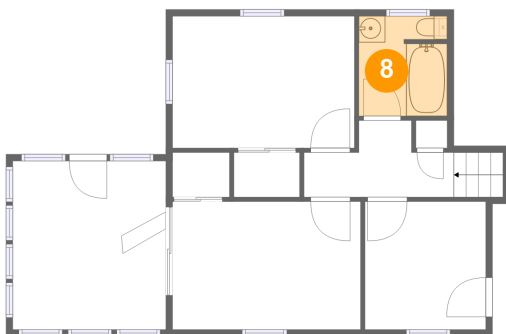
7 Floor 2 - Hall



Dimensions: 10'1" x 3'4"
Area: 43 sq. ft
Counted as living area: Yes

Heated: Yes
Finished: Yes
Enclosed: Yes
Contiguous: Yes
Permitted: Yes
Wet space: No
Addition: No
Conversion: No

8 Floor 3 - Bath

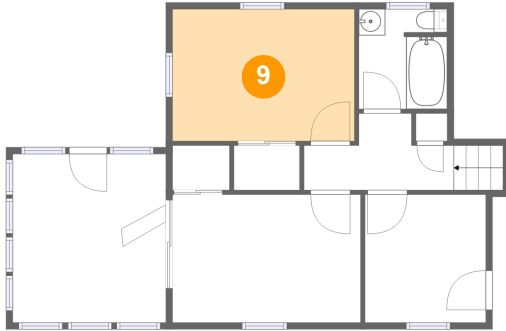


Dimensions: 6'8" x 7'6"
Area: 49 sq. ft
Counted as living area: Yes

Heated: Yes
Finished: Yes
Enclosed: Yes
Contiguous: Yes
Permitted: Yes
Wet space: Yes
Addition: No
Conversion: No

1135 Algonquin Blvd, Peterborough, ON, CA

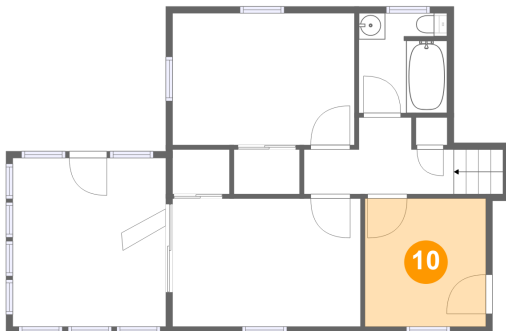
9 Floor 3 - Bedroom



Dimensions: 13'9" x 9'11"
Area: 136 sq. ft
Counted as living area: Yes

Heated: Yes
Finished: Yes
Enclosed: Yes
Contiguous: Yes
Permitted: Yes
Wet space: No
Addition: No
Conversion: No

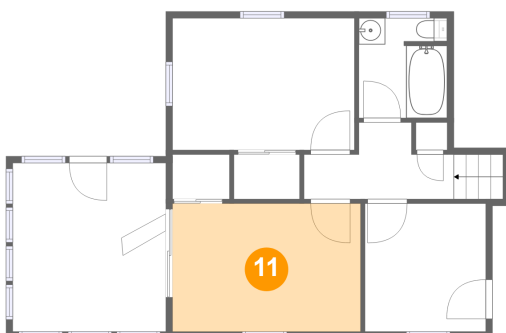
10 Floor 3 - Room



Dimensions: 9'1" x 9'7"
Area: 88 sq. ft
Counted as living area: Yes

Heated: Yes
Finished: Yes
Enclosed: Yes
Contiguous: Yes
Permitted: Yes
Wet space: No
Addition: No
Conversion: No

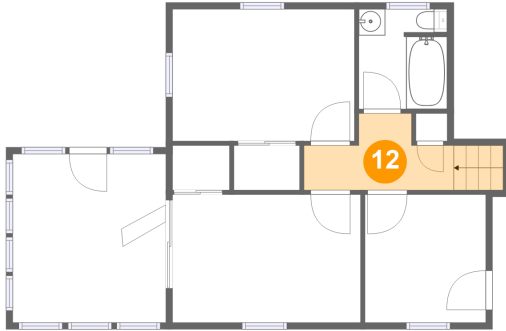
11 Floor 3 - Primary Bedroom



Dimensions: 14'2" x 9'8"
Area: 137 sq. ft
Counted as living area: Yes

Heated: Yes
Finished: Yes
Enclosed: Yes
Contiguous: Yes
Permitted: Yes
Wet space: No
Addition: No
Conversion: No

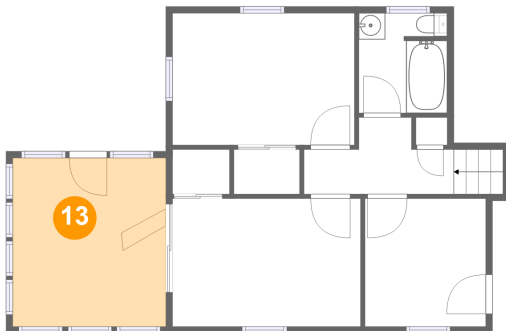
12 Floor 3 - Hall



Dimensions: 11'3" x 5'9"
Area: 60 sq. ft
Counted as living area: Yes

Heated: Yes
Finished: Yes
Enclosed: Yes
Contiguous: Yes
Permitted: Yes
Wet space: No
Addition: No
Conversion: No

13 Floor 3 - Screened Porch



Dimensions: 11'6" x 12'8"
Area: 147 sq. ft
Counted as living area: No

Heated: No
Finished: Yes
Enclosed: No
Contiguous: Yes
Permitted: Yes
Wet space: No
Addition: No
Conversion: No