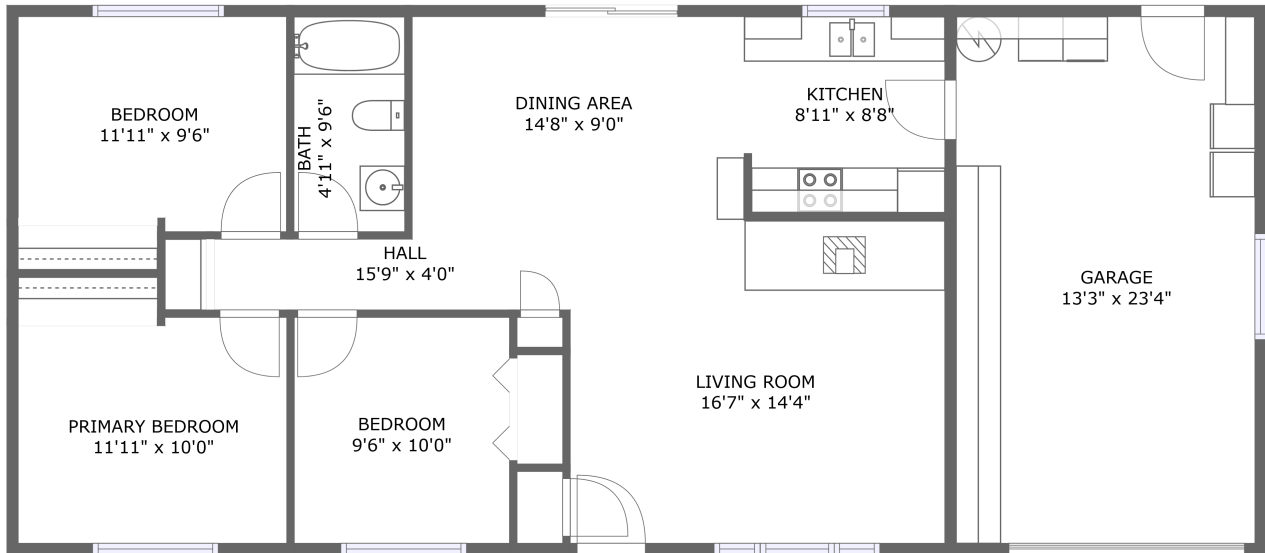



# 8 Berwick Court, Molalla, Clackamas County, Oregon, United States, 97038




FLOOR 1

## Property summary

 **1** Garages

 **3** Bedrooms

 **1** Bathrooms

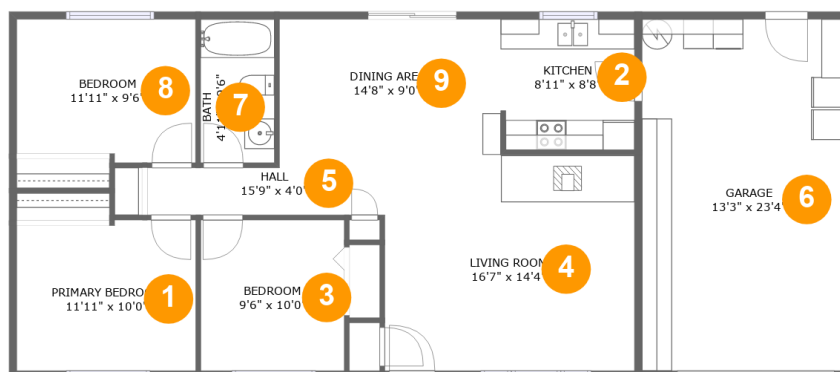
 **0** Half baths

 **1** Floors

 **1,022**  
Gross living  
area sqft

 **1,356**  
Total sqft

# 8 Berwick Court, Molalla, Clackamas County, Oregon, United States, 97038



## Room dimensions

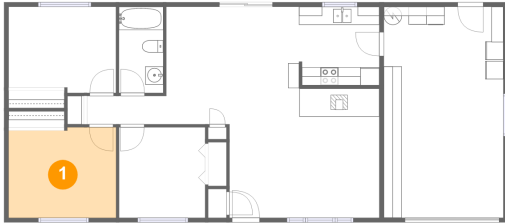
Floor 1

Total sqft: 1356 Living area: 1022

#		Dimensions	sqft	Counted as living area
1	Primary Bedroom	11'11" x 10'0"	117 sq. ft	Yes
2	Kitchen	8'11" x 8'8"	76 sq. ft	Yes
3	Bedroom	9'6" x 10'0"	95 sq. ft	Yes
4	Living Room	16'7" x 14'4"	237 sq. ft	Yes
5	Hall	15'9" x 4'0"	55 sq. ft	Yes
6	Garage	13'3" x 23'4"	309 sq. ft	No
7	Bath	4'11" x 9'6"	47 sq. ft	Yes
8	Bedroom	11'11" x 9'6"	109 sq. ft	Yes
9	Dining Area	14'8" x 9'0"	135 sq. ft	Yes

# 8 Berwick Court, Molalla, Clackamas County, Oregon, United States, 97038

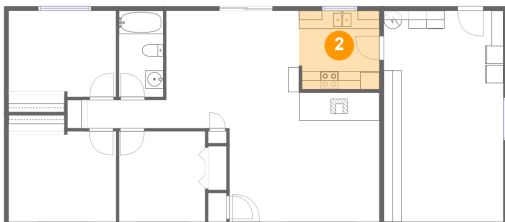
## 1 Floor 1 - Primary Bedroom



Dimensions: 11'11" x 10'0"  
Area: 117 sq. ft  
Counted as living area: Yes

Heated: Yes  
Finished: Yes  
Enclosed: Yes  
Contiguous: Yes  
Permitted: Yes  
Wet space: No  
Addition: No  
Conversion: No

## 2 Floor 1 - Kitchen



Dimensions: 8'11" x 8'8"  
Area: 76 sq. ft  
Counted as living area: Yes

Heated: Yes  
Finished: Yes  
Enclosed: Yes  
Contiguous: Yes  
Permitted: Yes  
Wet space: No  
Addition: No  
Conversion: No

# 8 Berwick Court, Molalla, Clackamas County, Oregon, United States, 97038

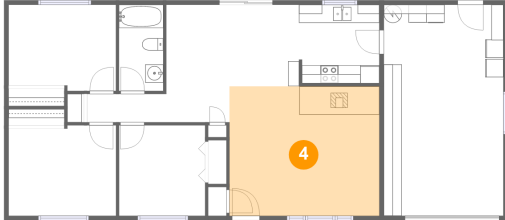
## 3 Floor 1 - Bedroom



Dimensions: 9'6" x 10'0"  
Area: 95 sq. ft  
Counted as living area: Yes

Heated: Yes  
Finished: Yes  
Enclosed: Yes  
Contiguous: Yes  
Permitted: Yes  
Wet space: No  
Addition: No  
Conversion: No

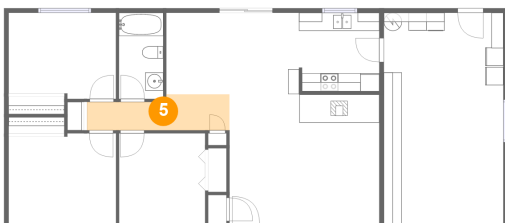
## 4 Floor 1 - Living Room



Dimensions: 16'7" x 14'4"  
Area: 237 sq. ft  
Counted as living area: Yes

Heated: Yes  
Finished: Yes  
Enclosed: Yes  
Contiguous: Yes  
Permitted: Yes  
Wet space: No  
Addition: No  
Conversion: No

## 5 Floor 1 - Hall

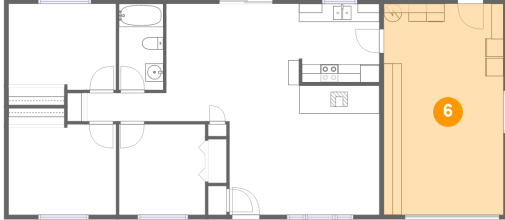


Dimensions: 15'9" x 4'0"  
Area: 55 sq. ft  
Counted as living area: Yes

Heated: Yes  
Finished: Yes  
Enclosed: Yes  
Contiguous: Yes  
Permitted: Yes  
Wet space: No  
Addition: No  
Conversion: No

# 8 Berwick Court, Molalla, Clackamas County, Oregon, United States, 97038

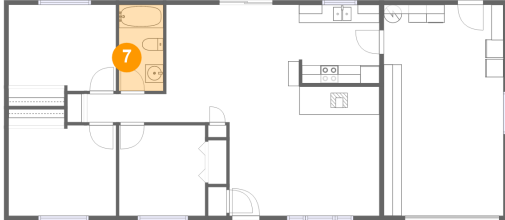
## 6 Floor 1 - Garage



Dimensions: 13'3" x 23'4"  
Area: 309 sq. ft  
Counted as living area: No

Heated: No  
Finished: No  
Enclosed: Yes  
Contiguous: Yes  
Permitted: Yes  
Wet space: No  
Addition: No  
Conversion: No

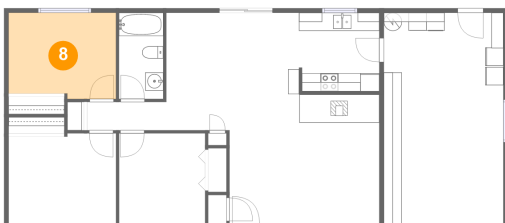
## 7 Floor 1 - Bath



Dimensions: 4'11" x 9'6"  
Area: 47 sq. ft  
Counted as living area: Yes

Heated: Yes  
Finished: Yes  
Enclosed: Yes  
Contiguous: Yes  
Permitted: Yes  
Wet space: Yes  
Addition: No  
Conversion: No

## 8 Floor 1 - Bedroom



Dimensions: 11'11" x 9'6"  
Area: 109 sq. ft  
Counted as living area: Yes

Heated: Yes  
Finished: Yes  
Enclosed: Yes  
Contiguous: Yes  
Permitted: Yes  
Wet space: No  
Addition: No  
Conversion: No

# 8 Berwick Court, Molalla, Clackamas County, Oregon, United States, 97038

## 9 Floor 1 - Dining Area



Dimensions: 14'8" x 9'0"  
Area: 135 sq. ft  
Counted as living area: Yes

Heated: Yes  
Finished: Yes  
Enclosed: Yes  
Contiguous: Yes  
Permitted: Yes  
Wet space: No  
Addition: No  
Conversion: No