

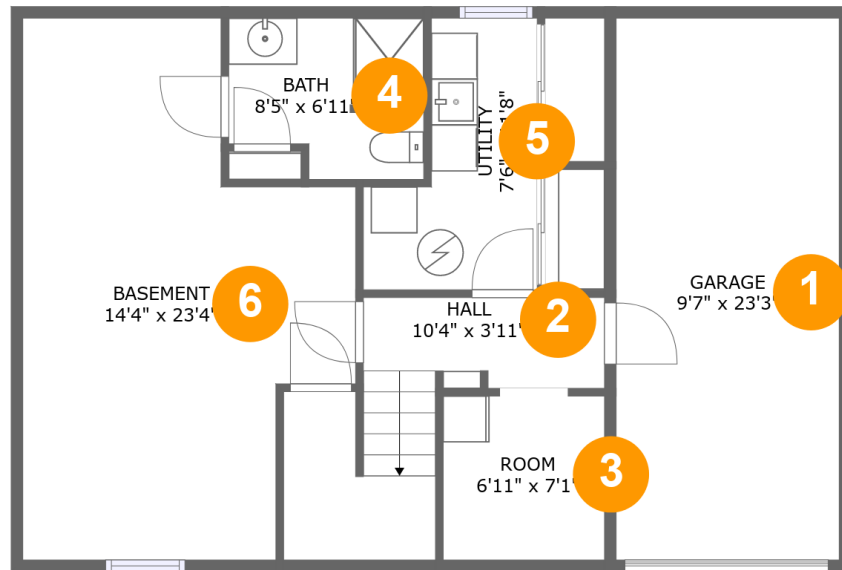
2036 Southwell Dr, South Park Township, PA, US



Property Summary

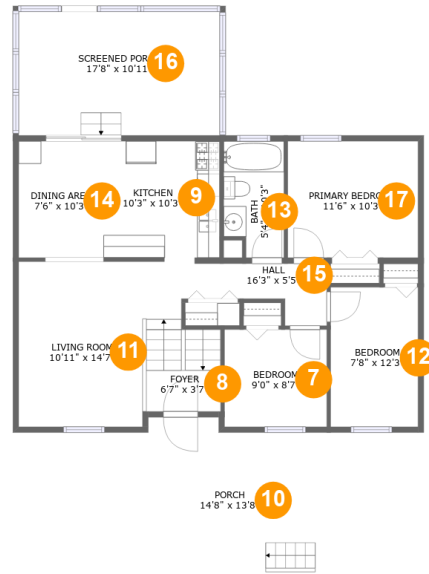
1 garages **3** bedrooms **2** bathrooms **0** half baths

2 floors **1,246** Gross Living Area sqft **2,220** total sqft

2036 Southwell Dr, South Park Township, PA, US**Room Dimensions****Floor 1****Total sqft: 881****Living area: 365**

#	Room name	Dimensions	Area (sqft)	Counted as Living Area
1	Garage	9'7" x 23'3"	224 sq. ft	No
2	Hall	10'4" x 3'11"	87 sq. ft	No
3	Room	6'11" x 7'1"	49 sq. ft	No
4	Bath	8'5" x 6'11"	52 sq. ft	Yes
5	Utility	7'6" x 11'8"	66 sq. ft	No
6	Basement	14'4" x 23'4"	266 sq. ft	Yes

2036 Southwell Dr, South Park Township, PA, US



Room Dimensions

Floor 2

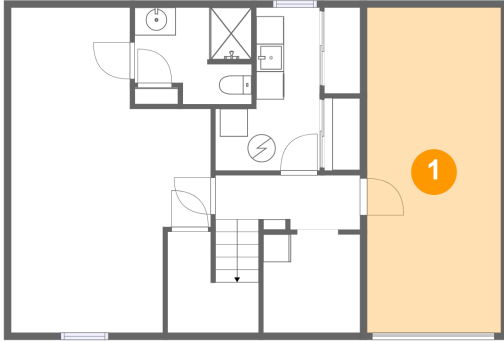
Total sqft: 1339

Living area: 881

#	Room name	Dimensions	Area (sqft)	Counted as Living Area
7	Bedroom	9'0" x 8'7"	77 sq. ft	Yes
8	Foyer	6'7" x 3'7"	53 sq. ft	No
9	Kitchen	10'3" x 10'3"	105 sq. ft	Yes
10	Porch	14'8" x 13'8"	189 sq. ft	No
11	Living Room	10'11" x 14'7"	159 sq. ft	Yes
12	Bedroom	7'8" x 12'3"	95 sq. ft	Yes
13	Bath	5'4" x 10'3"	51 sq. ft	Yes
14	Dining Area	7'6" x 10'3"	77 sq. ft	Yes
15	Hall	16'3" x 5'5"	67 sq. ft	Yes
16	Screened Porch	17'8" x 10'11"	193 sq. ft	No
17	Primary Bedroom	11'6" x 10'3"	118 sq. ft	Yes

2036 Southwell Dr, South Park Township, PA, US

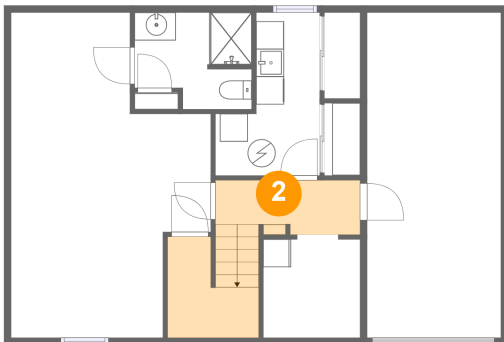
1 Floor 1 - Garage



Dimensions: 9'7" x 23'3"
Area: 224 sq. ft
Counted as Living Area: No

Heated: No
Finished: No
Enclosed: Yes
Contiguous: Yes
Permitted: Yes
Wet Space: No
Addition: No
Conversion: No

2 Floor 1 - Hall

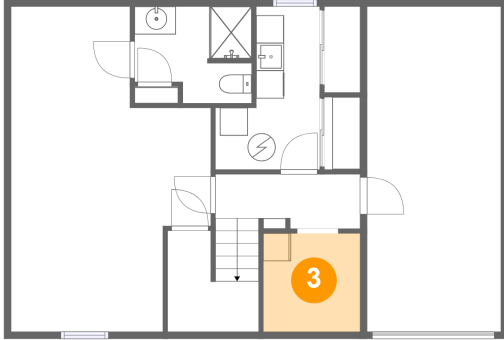


Dimensions: 10'4" x 3'11"
Area: 87 sq. ft
Counted as Living Area: No

Heated: Yes
Finished: No
Enclosed: Yes
Contiguous: Yes
Permitted: Yes
Wet Space: No
Addition: No
Conversion: No

2036 Southwell Dr, South Park Township, PA, US

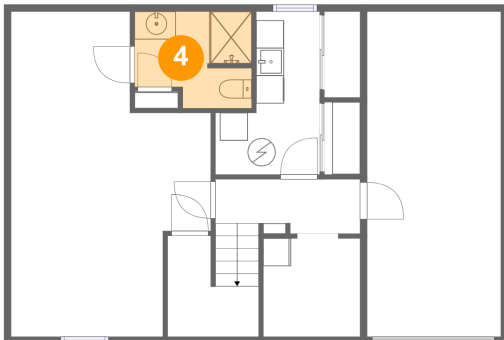
3 Floor 1 - Room



Dimensions: 6'11" x 7'1"
Area: 49 sq. ft
Counted as Living Area: No

Heated: Yes
Finished: No
Enclosed: Yes
Contiguous: Yes
Permitted: Yes
Wet Space: No
Addition: No
Conversion: No

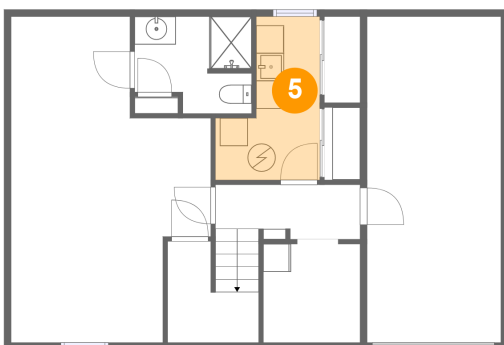
4 Floor 1 - Bath



Dimensions: 8'5" x 6'11"
Area: 52 sq. ft
Counted as Living Area: Yes

Heated: Yes
Finished: Yes
Enclosed: Yes
Contiguous: Yes
Permitted: Yes
Wet Space: Yes
Addition: No
Conversion: No

5 Floor 1 - Utility

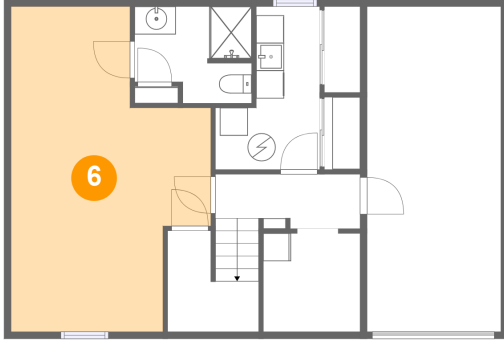


Dimensions: 7'6" x 11'8"
Area: 66 sq. ft
Counted as Living Area: No

Heated: Yes
Finished: No
Enclosed: Yes
Contiguous: Yes
Permitted: Yes
Wet Space: No
Addition: No
Conversion: No

2036 Southwell Dr, South Park Township, PA, US

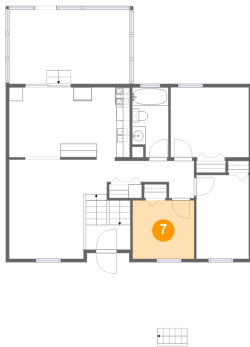
6 Floor 1 - Basement



Dimensions: 14'4" x 23'4"
Area: 266 sq. ft
Counted as Living Area:
Yes

Heated: Yes
Finished: Yes
Enclosed: Yes
Contiguous:
Yes
Permitted: Yes
Wet Space: No
Addition: No
Conversion: No

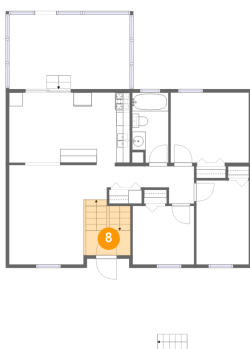
7 Floor 2 - Bedroom



Dimensions: 9'0" x 8'7"
Area: 77 sq. ft
Counted as Living Area:
Yes

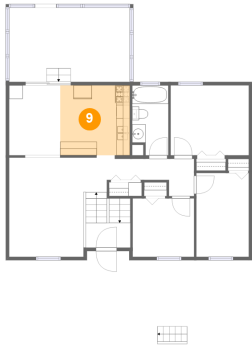
Heated: Yes
Finished: Yes
Enclosed: Yes
Contiguous:
Yes
Permitted: Yes
Wet Space: No
Addition: No
Conversion: No

8 Floor 2 - Foyer



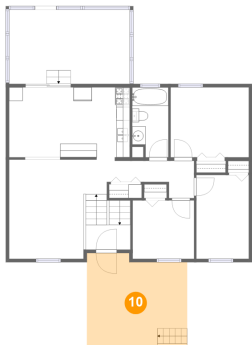
Dimensions: 6'7" x 3'7"
Area: 53 sq. ft
Counted as Living Area: No

Heated: Yes
Finished: Yes
Enclosed: Yes
Contiguous: Yes
Permitted: Yes
Wet Space: No
Addition: No
Conversion: No

2036 Southwell Dr, South Park Township, PA, US**9 Floor 2 - Kitchen**

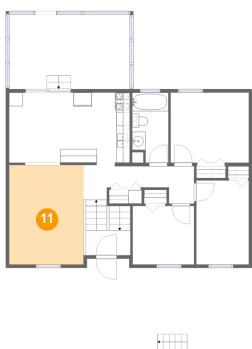
Dimensions: 10'3" x 10'3"
Area: 105 sq. ft
Counted as Living Area:
Yes

Heated: Yes
Finished: Yes
Enclosed: Yes
Contiguous:
Yes
Permitted: Yes
Wet Space: No
Addition: No
Conversion: No

10 Floor 2 - Porch

Dimensions: 14'8" x 13'8"
Area: 189 sq. ft
Counted as Living Area: No

Heated: No
Finished: Yes
Enclosed: No
Contiguous: Yes
Permitted: Yes
Wet Space: No
Addition: No
Conversion: No

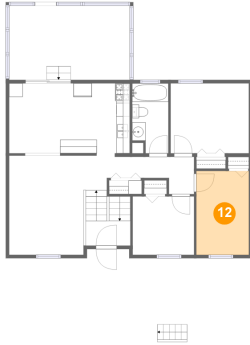
11 Floor 2 - Living Room

Dimensions: 10'11" x 14'7"
Area: 159 sq. ft
Counted as Living Area:
Yes

Heated: Yes
Finished: Yes
Enclosed: Yes
Contiguous:
Yes
Permitted: Yes
Wet Space: No
Addition: No
Conversion: No

2036 Southwell Dr, South Park Township, PA, US

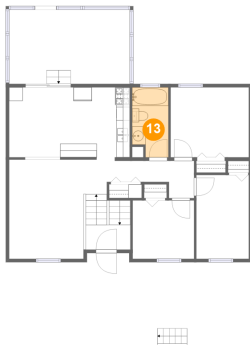
12 Floor 2 - Bedroom



Dimensions: 7'8" x 12'3"
Area: 95 sq. ft
Counted as Living Area:
Yes

Heated: Yes
Finished: Yes
Enclosed: Yes
Contiguous:
Yes
Permitted: Yes
Wet Space: No
Addition: No
Conversion: No

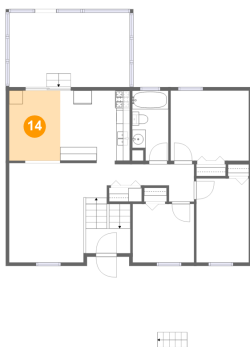
13 Floor 2 - Bath



Dimensions: 5'4" x 10'3"
Area: 51 sq. ft
Counted as Living Area:
Yes

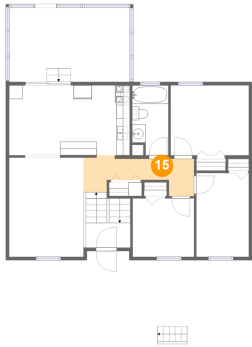
Heated: Yes
Finished: Yes
Enclosed: Yes
Contiguous:
Yes
Permitted: Yes
Wet Space: Yes
Addition: No
Conversion: No

14 Floor 2 - Dining Area



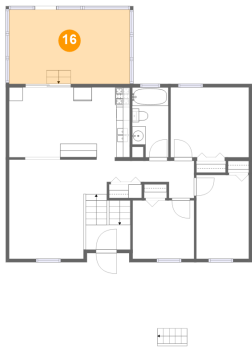
Dimensions: 7'6" x 10'3"
Area: 77 sq. ft
Counted as Living Area:
Yes

Heated: Yes
Finished: Yes
Enclosed: Yes
Contiguous:
Yes
Permitted: Yes
Wet Space: No
Addition: No
Conversion: No

2036 Southwell Dr, South Park Township, PA, US**15 Floor 2 - Hall**

Dimensions: 16'3" x 5'5"
Area: 67 sq. ft
Counted as Living Area:
Yes

Heated: Yes
Finished: Yes
Enclosed: Yes
Contiguous:
Yes
Permitted: Yes
Wet Space: No
Addition: No
Conversion: No

16 Floor 2 - Screened Porch

Dimensions: 17'8" x 10'11"
Area: 193 sq. ft
Counted as Living Area: No

Heated: No
Finished: Yes
Enclosed: No
Contiguous: Yes
Permitted: Yes
Wet Space: No
Addition: No
Conversion: No

17 Floor 2 - Primary Bedroom

Dimensions: 11'6" x 10'3"
Area: 118 sq. ft
Counted as Living Area:
Yes

Heated: Yes
Finished: Yes
Enclosed: Yes
Contiguous:
Yes
Permitted: Yes
Wet Space: No
Addition: No
Conversion: No