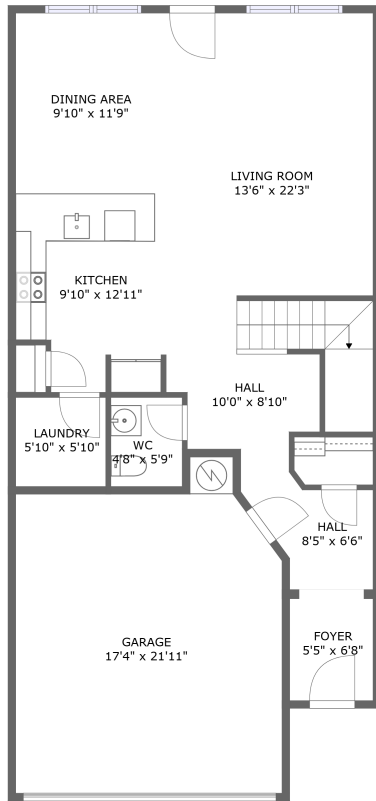
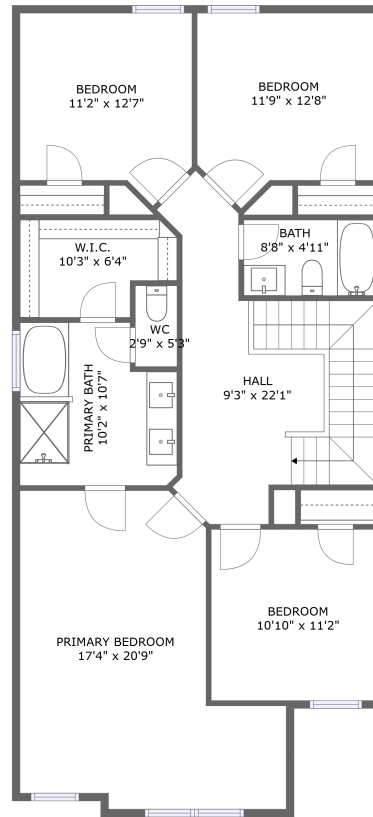


3228 Spool Ln SW, Huntsville, Madison County, Alabama, United States, 35805



FLOOR 1




FLOOR 2

Property Summary


 **1** garages


 **4** bedrooms

 **2** bathrooms

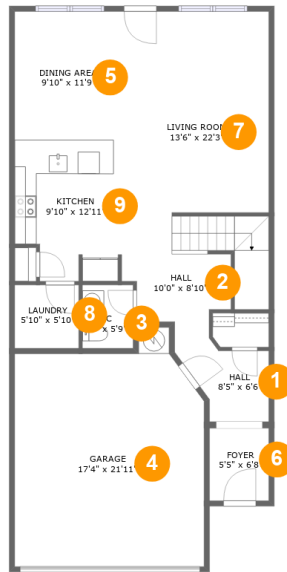
 **1** half baths

 **2** floors

 **2,099** Gross Living Area sqft

 **2,459** total sqft

3228 Spool Ln SW, Huntsville, Madison County, Alabama, United States, 35805



Room Dimensions

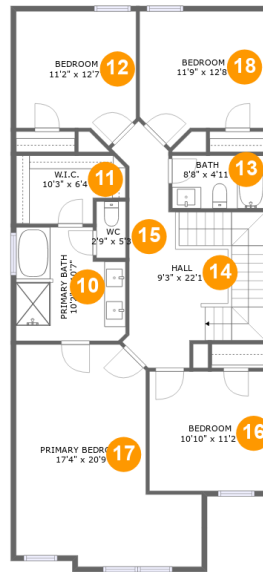
Floor 1

Total sqft: 1223

Living area: 863

#	Room name	Dimensions	Area (sqft)	Counted as Living Area
1	Hall	8'5" x 6'6"	43 sq. ft	Yes
2	Hall	10'0" x 8'10"	63 sq. ft	Yes
3	Wc	4'8" x 5'9"	27 sq. ft	Yes
4	Garage	17'4" x 21'11"	338 sq. ft	No
5	Dining Area	9'10" x 11'9"	115 sq. ft	Yes
6	Foyer	5'5" x 6'8"	36 sq. ft	Yes
7	Living Room	13'6" x 22'3"	312 sq. ft	Yes
8	Laundry	5'10" x 5'10"	34 sq. ft	Yes
9	Kitchen	9'10" x 12'11"	117 sq. ft	Yes

3228 Spool Ln SW, Huntsville, Madison County, Alabama, United States, 35805



Room Dimensions

Floor 2

Total sqft: 1236

Living area: 1236

#	Room name	Dimensions	Area (sqft)	Counted as Living Area
10	Primary Bath	10'2" x 10'7"	99 sq. ft	Yes
11	W.i.c.	10'3" x 6'4"	57 sq. ft	Yes
12	Bedroom	11'2" x 12'7"	125 sq. ft	Yes
13	Bath	8'8" x 4'11"	43 sq. ft	Yes
14	Hall	9'3" x 22'1"	195 sq. ft	Yes
15	Wc	2'9" x 5'3"	14 sq. ft	Yes
16	Bedroom	10'10" x 11'2"	121 sq. ft	Yes
17	Primary Bedroom	17'4" x 20'9"	278 sq. ft	Yes
18	Bedroom	11'9" x 12'8"	131 sq. ft	Yes

3228 Spool Ln SW, Huntsville, Madison County, Alabama, United States, 35805

1 Floor 1 - Hall



Dimensions: 8'5" x 6'6"
Area: 43 sq. ft
Counted as Living Area:
Yes

Heated: Yes
Finished: Yes
Enclosed: Yes
Contiguous:
Yes
Permitted: Yes
Wet Space: No
Addition: No
Conversion: No

2 Floor 1 - Hall



Dimensions: 10'0" x 8'10"
Area: 63 sq. ft
Counted as Living Area:
Yes

Heated: Yes
Finished: Yes
Enclosed: Yes
Contiguous:
Yes
Permitted: Yes
Wet Space: No
Addition: No
Conversion: No

3228 Spool Ln SW, Huntsville, Madison County, Alabama, United States, 35805

3 Floor 1 - Wc



Dimensions: 4'8" x 5'9"
Area: 27 sq. ft
Counted as Living Area: Yes

Heated: Yes
Finished: Yes
Enclosed: Yes
Contiguous: Yes
Permitted: Yes
Wet Space: Yes
Addition: No
Conversion: No

4 Floor 1 - Garage



Dimensions: 17'4" x 21'11"
Area: 338 sq. ft
Counted as Living Area: No

Heated: No
Finished: No
Enclosed: Yes
Contiguous: Yes
Permitted: Yes
Wet Space: No
Addition: No
Conversion: No

5 Floor 1 - Dining Area

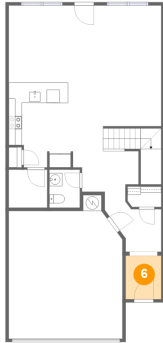


Dimensions: 9'10" x 11'9"
Area: 115 sq. ft
Counted as Living Area: Yes

Heated: Yes
Finished: Yes
Enclosed: Yes
Contiguous: Yes
Permitted: Yes
Wet Space: No
Addition: No
Conversion: No

3228 Spool Ln SW, Huntsville, Madison County, Alabama, United States, 35805

6 Floor 1 - Foyer



Dimensions: 5'5" x 6'8"
Area: 36 sq. ft
Counted as Living Area:
Yes

Heated: Yes
Finished: Yes
Enclosed: Yes
Contiguous:
Yes
Permitted: Yes
Wet Space: No
Addition: No
Conversion: No

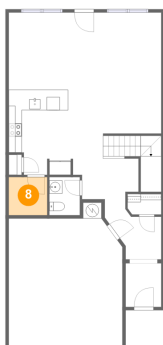
7 Floor 1 - Living Room



Dimensions: 13'6" x 22'3"
Area: 312 sq. ft
Counted as Living Area:
Yes

Heated: Yes
Finished: Yes
Enclosed: Yes
Contiguous:
Yes
Permitted: Yes
Wet Space: No
Addition: No
Conversion: No

8 Floor 1 - Laundry



Dimensions: 5'10" x 5'10"
Area: 34 sq. ft
Counted as Living Area:
Yes

Heated: Yes
Finished: Yes
Enclosed: Yes
Contiguous:
Yes
Permitted: Yes
Wet Space: No
Addition: No
Conversion: No

3228 Spool Ln SW, Huntsville, Madison County, Alabama, United States, 35805

9 Floor 1 - Kitchen



Dimensions: 9'10" x 12'11"
Area: 117 sq. ft
Counted as Living Area:
Yes

Heated: Yes
Finished: Yes
Enclosed: Yes
Contiguous:
Yes
Permitted: Yes
Wet Space: No
Addition: No
Conversion: No

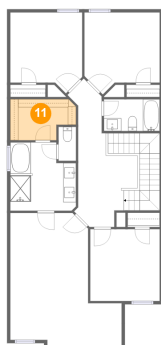
10 Floor 2 - Primary Bath



Dimensions: 10'2" x 10'7"
Area: 99 sq. ft
Counted as Living Area:
Yes

Heated: Yes
Finished: Yes
Enclosed: Yes
Contiguous:
Yes
Permitted: Yes
Wet Space: Yes
Addition: No
Conversion: No

11 Floor 2 - W.i.c.

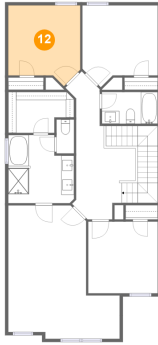


Dimensions: 10'3" x 6'4"
Area: 57 sq. ft
Counted as Living Area:
Yes

Heated: Yes
Finished: Yes
Enclosed: Yes
Contiguous:
Yes
Permitted: Yes
Wet Space: No
Addition: No
Conversion: No

3228 Spool Ln SW, Huntsville, Madison County, Alabama, United States, 35805

12 Floor 2 - Bedroom



Dimensions: 11'2" x 12'7"
Area: 125 sq. ft
Counted as Living Area:
Yes

Heated: Yes
Finished: Yes
Enclosed: Yes
Contiguous:
Yes
Permitted: Yes
Wet Space: No
Addition: No
Conversion: No

13 Floor 2 - Bath



Dimensions: 8'8" x 4'11"
Area: 43 sq. ft
Counted as Living Area:
Yes

Heated: Yes
Finished: Yes
Enclosed: Yes
Contiguous:
Yes
Permitted: Yes
Wet Space: Yes
Addition: No
Conversion: No

14 Floor 2 - Hall



Dimensions: 9'3" x 22'1"
Area: 195 sq. ft
Counted as Living Area:
Yes

Heated: Yes
Finished: Yes
Enclosed: Yes
Contiguous:
Yes
Permitted: Yes
Wet Space: No
Addition: No
Conversion: No

3228 Spool Ln SW, Huntsville, Madison County, Alabama, United States, 35805

15 Floor 2 - Wc



Dimensions: 2'9" x 5'3"
Area: 14 sq. ft
Counted as Living Area:
Yes

Heated: Yes
Finished: Yes
Enclosed: Yes
Contiguous:
Yes
Permitted: Yes
Wet Space: Yes
Addition: No
Conversion: No

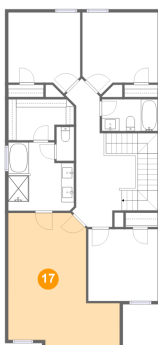
16 Floor 2 - Bedroom



Dimensions: 10'10" x 11'2"
Area: 121 sq. ft
Counted as Living Area:
Yes

Heated: Yes
Finished: Yes
Enclosed: Yes
Contiguous:
Yes
Permitted: Yes
Wet Space: No
Addition: No
Conversion: No

17 Floor 2 - Primary Bedroom

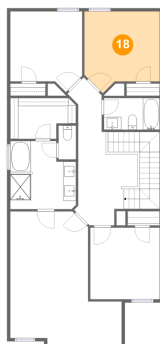


Dimensions: 17'4" x 20'9"
Area: 278 sq. ft
Counted as Living Area:
Yes

Heated: Yes
Finished: Yes
Enclosed: Yes
Contiguous:
Yes
Permitted: Yes
Wet Space: No
Addition: No
Conversion: No

3228 Spool Ln SW, Huntsville, Madison County, Alabama, United States, 35805

18 Floor 2 - Bedroom



Dimensions: 11'9" x 12'8"
Area: 131 sq. ft
Counted as Living Area:
Yes

Heated: Yes
Finished: Yes
Enclosed: Yes
Contiguous:
Yes
Permitted: Yes
Wet Space: No
Addition: No
Conversion: No