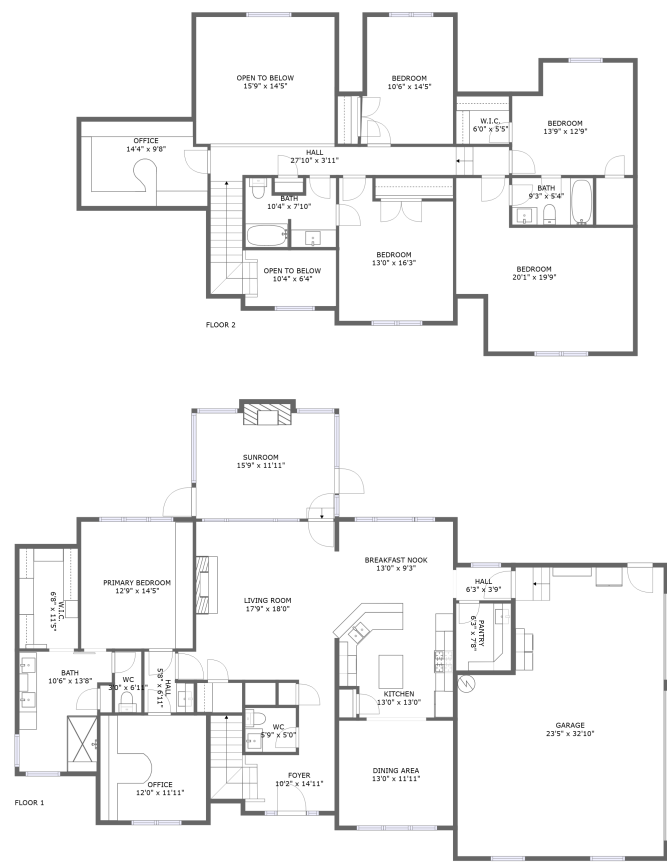




Home report


2723 Brenda Street, Thompsons Station, Williamson County,
Tennessee, United States, 37179




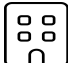
Property summary


 **1** Garages


 **5** Bedrooms

 **3** Bathrooms

 **1** Half baths

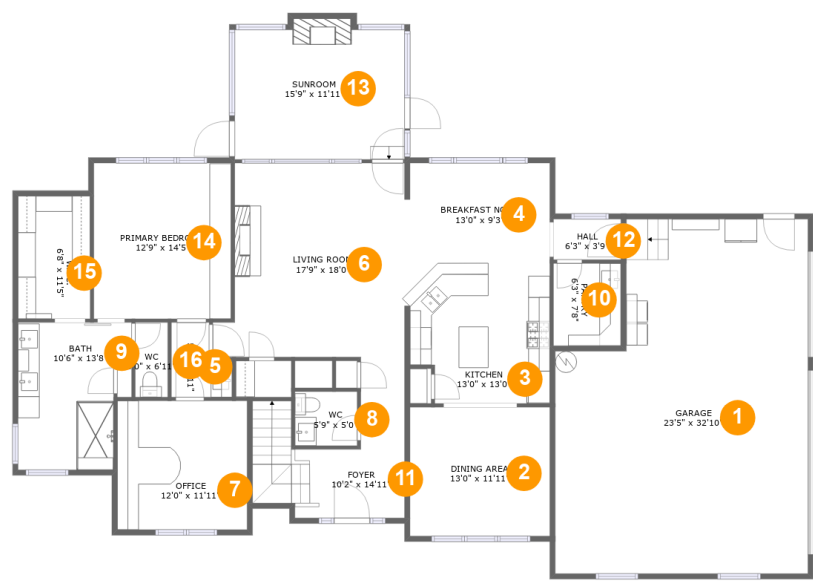
 **2** Floors

 **3,307** Gross living area sqft

 **4,471** Total sqft

Home report

2723 Brenda Street, Thompsons Station, Williamson County,
Tennessee, United States, 37179



Room dimensions

Floor 1

Total sqft: 2698 Living area: 1964

| # | | Dimensions | sqft | Counted as living area |
|----|----------------|----------------|------------|------------------------|
| 1 | Garage | 23'5" x 32'10" | 688 sq. ft | No |
| 2 | Dining Area | 13'0" x 11'11" | 155 sq. ft | Yes |
| 3 | Kitchen | 13'0" x 13'0" | 160 sq. ft | Yes |
| 4 | Breakfast Nook | 13'0" x 9'3" | 120 sq. ft | Yes |
| 5 | Hall | 5'8" x 6'11" | 31 sq. ft | Yes |
| 6 | Living Room | 17'9" x 18'0" | 294 sq. ft | Yes |
| 7 | Office | 12'0" x 11'11" | 144 sq. ft | Yes |
| 8 | WC | 5'9" x 5'0" | 29 sq. ft | Yes |
| 9 | Bath | 10'6" x 13'8" | 127 sq. ft | Yes |
| 10 | Pantry | 6'3" x 7'8" | 48 sq. ft | Yes |
| 11 | Foyer | 10'2" x 14'11" | 135 sq. ft | Yes |

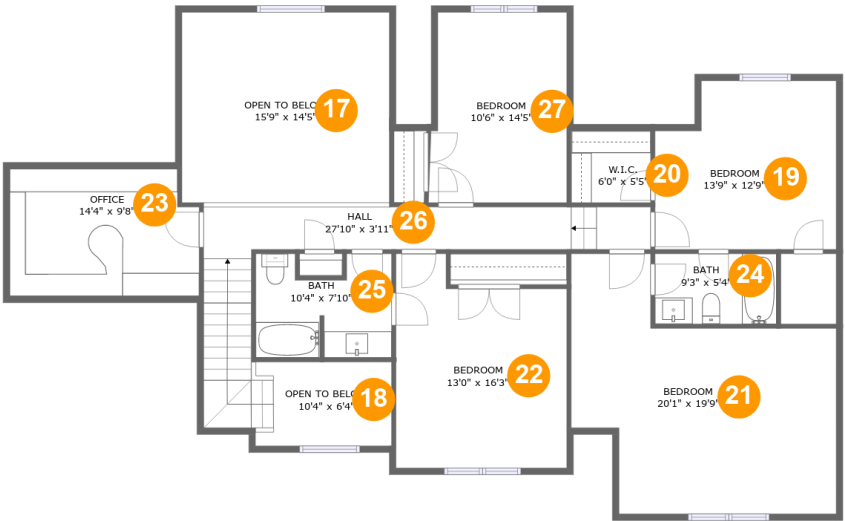
Home report

**2723 Brenda Street, Thompsons Station, Williamson County,
Tennessee, United States, 37179**

| # | | Dimensions | sqft | Counted as living area |
|----|-----------------|----------------|------------|------------------------|
| 12 | Hall | 6'3" x 3'9" | 24 sq. ft | Yes |
| 13 | Sunroom | 15'9" x 11'11" | 195 sq. ft | Yes |
| 14 | Primary Bedroom | 12'9" x 14'5" | 184 sq. ft | Yes |
| 15 | W.I.C. | 6'8" x 11'5" | 76 sq. ft | Yes |
| 16 | WC | 3'0" x 6'11" | 21 sq. ft | Yes |

Home report

2723 Brenda Street, Thompsons Station, Williamson County,
Tennessee, United States, 37179



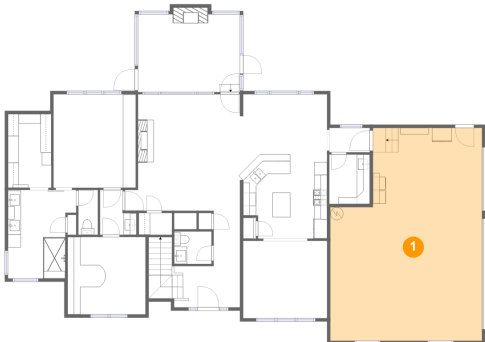
Room dimensions

Floor 2 Total sqft: 1773 Living area: 1343

| # | | Dimensions | sqft | Counted as living area |
|----|---------------|----------------|------------|------------------------|
| 17 | Open To Below | 15'9" x 14'5" | 227 sq. ft | No |
| 18 | Open To Below | 10'4" x 6'4" | 60 sq. ft | No |
| 19 | Bedroom | 13'9" x 12'9" | 121 sq. ft | Yes |
| 20 | W.I.C. | 6'0" x 5'5" | 33 sq. ft | Yes |
| 21 | Bedroom | 20'1" x 19'9" | 238 sq. ft | Yes |
| 22 | Bedroom | 13'0" x 16'3" | 186 sq. ft | Yes |
| 23 | Office | 14'4" x 9'8" | 134 sq. ft | Yes |
| 24 | Bath | 9'3" x 5'4" | 49 sq. ft | Yes |
| 25 | Bath | 10'4" x 7'10" | 72 sq. ft | Yes |
| 26 | Hall | 27'10" x 3'11" | 170 sq. ft | Yes |
| 27 | Bedroom | 10'6" x 14'5" | 145 sq. ft | Yes |

2723 Brenda Street, Thompsons Station, Williamson County,
Tennessee, United States, 37179

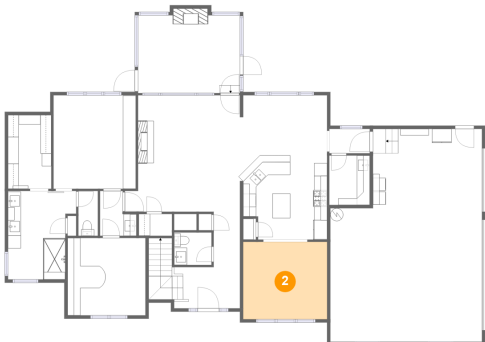
1 Floor 1 - Garage



Dimensions: 23'5" x 32'10"
Area: 688 sq. ft
Counted as living area: No

Heated: No
Finished: No
Enclosed: Yes
Contiguous: Yes
Permitted: Yes
Wet space: No
Addition: No
Conversion: No

2 Floor 1 - Dining Area



Dimensions: 13'0" x 11'11"
Area: 155 sq. ft
Counted as living area: Yes

Heated: Yes
Finished: Yes
Enclosed: Yes
Contiguous: Yes
Permitted: Yes
Wet space: No
Addition: No
Conversion: No

2723 Brenda Street, Thompsons Station, Williamson County,
Tennessee, United States, 37179

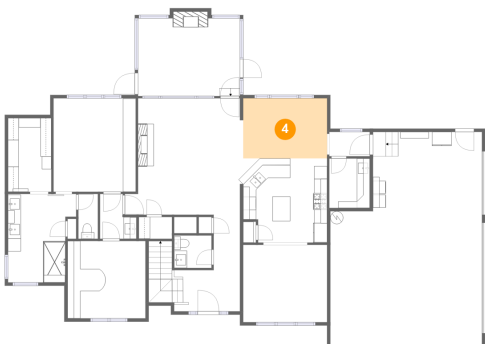
3 Floor 1 - Kitchen



Dimensions: 13'0" x 13'0"
Area: 160 sq. ft
Counted as living area: Yes

Heated: Yes
Finished: Yes
Enclosed: Yes
Contiguous: Yes
Permitted: Yes
Wet space: No
Addition: No
Conversion: No

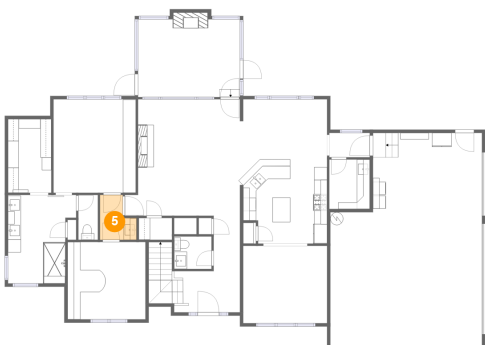
4 Floor 1 - Breakfast Nook



Dimensions: 13'0" x 9'3"
Area: 120 sq. ft
Counted as living area: Yes

Heated: Yes
Finished: Yes
Enclosed: Yes
Contiguous: Yes
Permitted: Yes
Wet space: No
Addition: No
Conversion: No

5 Floor 1 - Hall

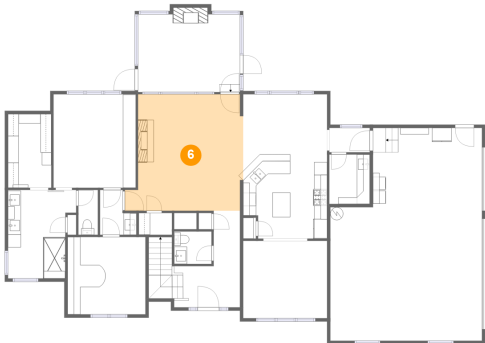


Dimensions: 5'8" x 6'11"
Area: 31 sq. ft
Counted as living area: Yes

Heated: Yes
Finished: Yes
Enclosed: Yes
Contiguous: Yes
Permitted: Yes
Wet space: No
Addition: No
Conversion: No

2723 Brenda Street, Thompsons Station, Williamson County,
Tennessee, United States, 37179

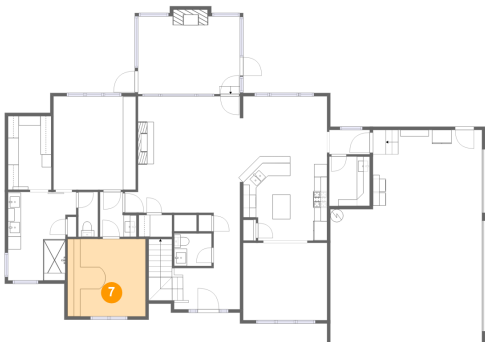
6 Floor 1 - Living Room



Dimensions: 17'9" x 18'0"
Area: 294 sq. ft
Counted as living area: Yes

Heated: Yes
Finished: Yes
Enclosed: Yes
Contiguous: Yes
Permitted: Yes
Wet space: No
Addition: No
Conversion: No

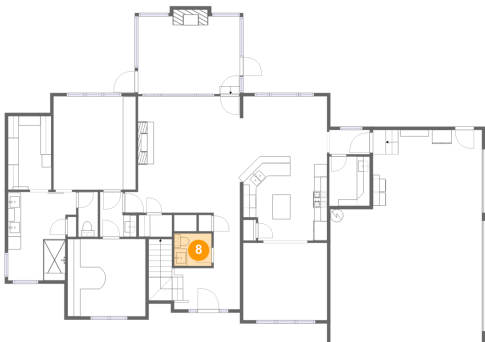
7 Floor 1 - Office



Dimensions: 12'0" x 11'11"
Area: 144 sq. ft
Counted as living area: Yes

Heated: Yes
Finished: Yes
Enclosed: Yes
Contiguous: Yes
Permitted: Yes
Wet space: No
Addition: No
Conversion: No

8 Floor 1 - WC



Dimensions: 5'9" x 5'0"
Area: 29 sq. ft
Counted as living area: Yes

Heated: Yes
Finished: Yes
Enclosed: Yes
Contiguous: Yes
Permitted: Yes
Wet space: Yes
Addition: No
Conversion: No

Home report

2723 Brenda Street, Thompsons Station, Williamson County,
Tennessee, United States, 37179

9 Floor 1 - Bath



Dimensions: 10'6" x 13'8"
Area: 127 sq. ft
Counted as living area: Yes

Heated: Yes
Finished: Yes
Enclosed: Yes
Contiguous: Yes
Permitted: Yes
Wet space: Yes
Addition: No
Conversion: No

10 Floor 1 - Pantry



Dimensions: 6'3" x 7'8"
Area: 48 sq. ft
Counted as living area: Yes

Heated: Yes
Finished: Yes
Enclosed: Yes
Contiguous: Yes
Permitted: Yes
Wet space: No
Addition: No
Conversion: No

11 Floor 1 - Foyer



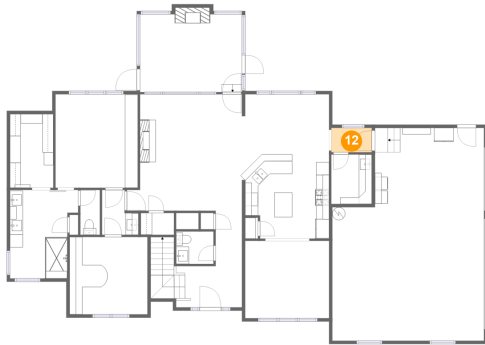
Dimensions: 10'2" x 14'11"
Area: 135 sq. ft
Counted as living area: Yes

Heated: Yes
Finished: Yes
Enclosed: Yes
Contiguous: Yes
Permitted: Yes
Wet space: No
Addition: No
Conversion: No

Home report

2723 Brenda Street, Thompsons Station, Williamson County,
Tennessee, United States, 37179

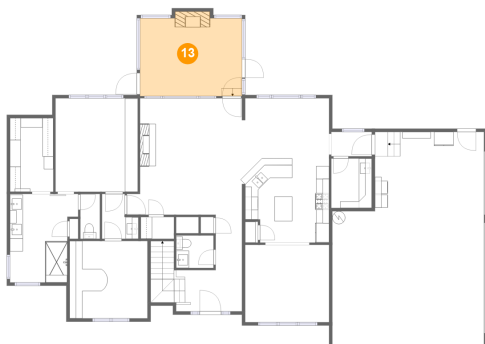
12 Floor 1 - Hall



Dimensions: 6'3" x 3'9"
Area: 24 sq. ft
Counted as living area: Yes

Heated: Yes
Finished: Yes
Enclosed: Yes
Contiguous: Yes
Permitted: Yes
Wet space: No
Addition: No
Conversion: No

13 Floor 1 - Sunroom



Dimensions: 15'9" x 11'11"
Area: 195 sq. ft
Counted as living area: Yes

Heated: Yes
Finished: Yes
Enclosed: Yes
Contiguous: Yes
Permitted: Yes
Wet space: No
Addition: No
Conversion: No

14 Floor 1 - Primary Bedroom



Dimensions: 12'9" x 14'5"
Area: 184 sq. ft
Counted as living area: Yes

Heated: Yes
Finished: Yes
Enclosed: Yes
Contiguous: Yes
Permitted: Yes
Wet space: No
Addition: No
Conversion: No

2723 Brenda Street, Thompsons Station, Williamson County,
Tennessee, United States, 37179

15 Floor 1 - W.I.C.



Dimensions: 6'8" x 11'5"
Area: 76 sq. ft
Counted as living area: Yes

Heated: Yes
Finished: Yes
Enclosed: Yes
Contiguous: Yes
Permitted: Yes
Wet space: No
Addition: No
Conversion: No

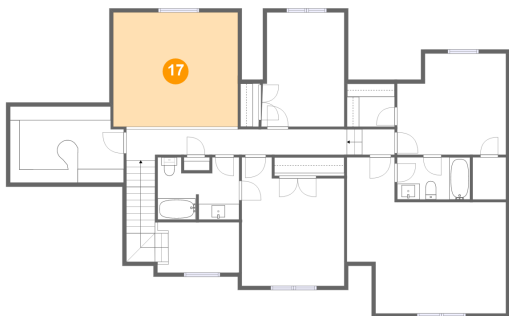
16 Floor 1 - WC



Dimensions: 3'0" x 6'11"
Area: 21 sq. ft
Counted as living area: Yes

Heated: Yes
Finished: Yes
Enclosed: Yes
Contiguous: Yes
Permitted: Yes
Wet space: No
Addition: No
Conversion: No

17 Floor 2 - Open To Below



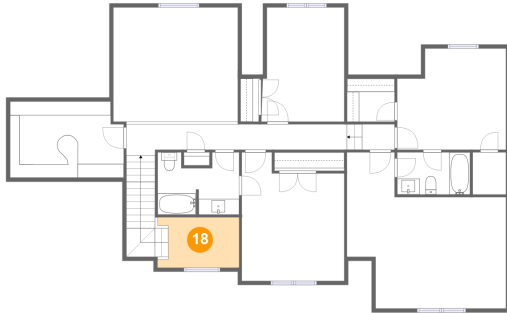
Dimensions: 15'9" x 14'5"
Area: 227 sq. ft
Counted as living area: No

Heated: No
Finished: No
Enclosed: No
Contiguous: Yes
Permitted: No
Wet space: No
Addition: No
Conversion: No

Home report

2723 Brenda Street, Thompsons Station, Williamson County,
Tennessee, United States, 37179

18 Floor 2 - Open To Below



Dimensions: 10'4" x 6'4"
Area: 60 sq. ft
Counted as living area: No

Heated: No
Finished: No
Enclosed: No
Contiguous: Yes
Permitted: No
Wet space: No
Addition: No
Conversion: No

19 Floor 2 - Bedroom



Dimensions: 13'9" x 12'9"
Area: 121 sq. ft
Counted as living area: Yes

Heated: Yes
Finished: Yes
Enclosed: Yes
Contiguous: Yes
Permitted: Yes
Wet space: No
Addition: No
Conversion: No

20 Floor 2 - W.I.C.



Dimensions: 6'0" x 5'5"
Area: 33 sq. ft
Counted as living area: Yes

Heated: Yes
Finished: Yes
Enclosed: Yes
Contiguous: Yes
Permitted: Yes
Wet space: No
Addition: No
Conversion: No

Home report

2723 Brenda Street, Thompsons Station, Williamson County,
Tennessee, United States, 37179

21 Floor 2 - Bedroom



Dimensions: 20'1" x 19'9"
Area: 238 sq. ft
Counted as living area: Yes

Heated: Yes
Finished: Yes
Enclosed: Yes
Contiguous: Yes
Permitted: Yes
Wet space: No
Addition: No
Conversion: No

22 Floor 2 - Bedroom



Dimensions: 13'0" x 16'3"
Area: 186 sq. ft
Counted as living area: Yes

Heated: Yes
Finished: Yes
Enclosed: Yes
Contiguous: Yes
Permitted: Yes
Wet space: No
Addition: No
Conversion: No

23 Floor 2 - Office



Dimensions: 14'4" x 9'8"
Area: 134 sq. ft
Counted as living area: Yes

Heated: Yes
Finished: Yes
Enclosed: Yes
Contiguous: Yes
Permitted: Yes
Wet space: No
Addition: No
Conversion: No

Home report

2723 Brenda Street, Thompsons Station, Williamson County,
Tennessee, United States, 37179

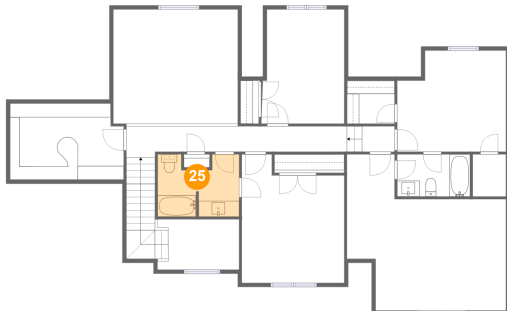
24 Floor 2 - Bath



Dimensions: 9'3" x 5'4"
Area: 49 sq. ft
Counted as living area: Yes

Heated: Yes
Finished: Yes
Enclosed: Yes
Contiguous: Yes
Permitted: Yes
Wet space: Yes
Addition: No
Conversion: No

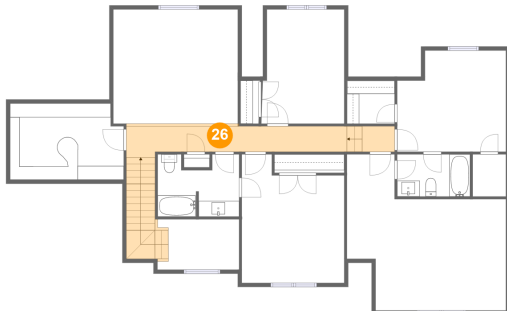
25 Floor 2 - Bath



Dimensions: 10'4" x 7'10"
Area: 72 sq. ft
Counted as living area: Yes

Heated: Yes
Finished: Yes
Enclosed: Yes
Contiguous: Yes
Permitted: Yes
Wet space: Yes
Addition: No
Conversion: No

26 Floor 2 - Hall



Dimensions: 27'10" x 3'11"
Area: 170 sq. ft
Counted as living area: Yes

Heated: Yes
Finished: Yes
Enclosed: Yes
Contiguous: Yes
Permitted: Yes
Wet space: No
Addition: No
Conversion: No

2723 Brenda Street, Thompsons Station, Williamson County,
Tennessee, United States, 37179

27 Floor 2 - Bedroom



Dimensions: 10'6" x 14'5"
Area: 145 sq. ft
Counted as living area: Yes

Heated: Yes
Finished: Yes
Enclosed: Yes
Contiguous: Yes
Permitted: Yes
Wet space: No
Addition: No
Conversion: No