

Home report

1780 Ashton Drive, North Lebanon Township, Lebanon, Lebanon County, Pennsylvania, United States, 17046



Total Area: 2637 sq. ft

Floor 1: 1005 sq. ft, Floor 2: 1632 sq. ft

Excluded: Garage 582 sq. ft, Outdoor Porch 102 sq. ft, Outdoor Porch Screen 118 sq. ft, Outdoor Deck 196 sq. ft, Embedded window 7 sq. ft

Property summary

**2** Floors

**3** Bedrooms

**1** Bathrooms

Home report

**1780 Ashton Drive, North Lebanon Township, Lebanon, Lebanon
County, Pennsylvania, United States, 17046**



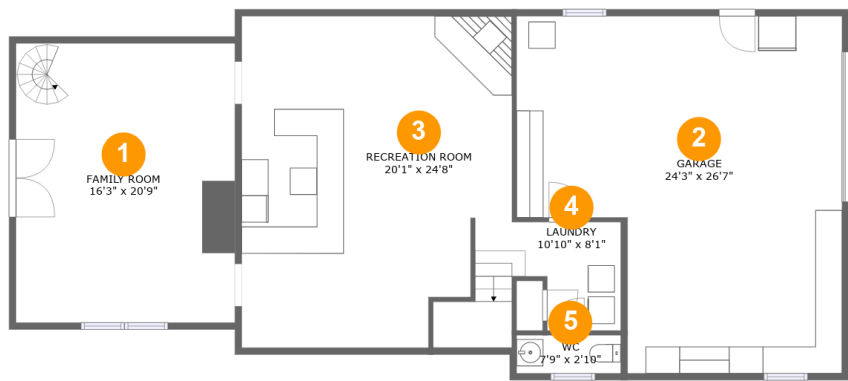
1
Half baths



1
Garages

Home report

1780 Ashton Drive, North Lebanon Township, Lebanon, Lebanon County, Pennsylvania, United States, 17046



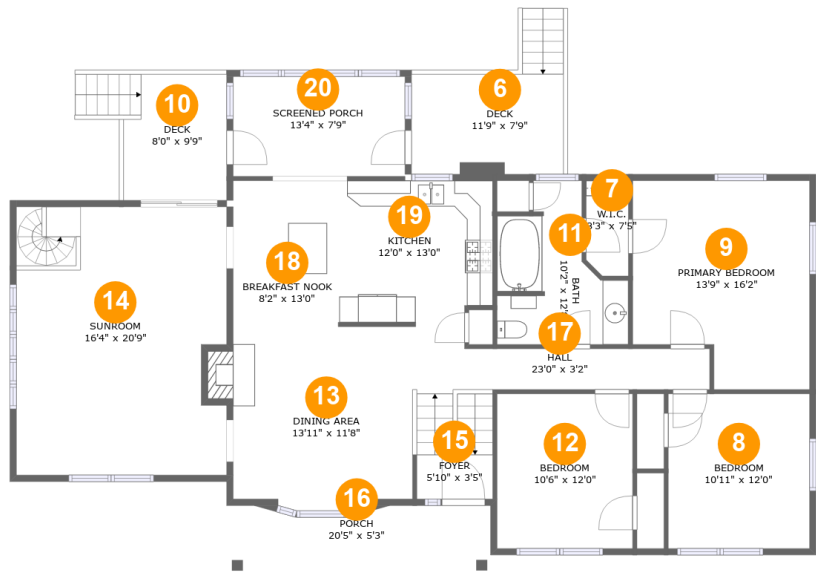
Room dimensions

Floor 1 Total:1005sqft Excluded: 582sqft

#		Max Dimensions	sqft	Included
1	Family Room	16'3" x 20'9"	339 sq. ft	Yes
2	Garage	24'3" x 26'7"	548 sq. ft	No
3	Recreation Room	20'1" x 24'8"	456 sq. ft	Yes
4	Laundry	10'10" x 8'1"	91 sq. ft	Yes
5	WC	7'9" x 2'10"	22 sq. ft	Yes

Home report

1780 Ashton Drive, North Lebanon Township, Lebanon, Lebanon County, Pennsylvania, United States, 17046



Room dimensions

Floor 2 Total:1632sqft Excluded: 423sqft

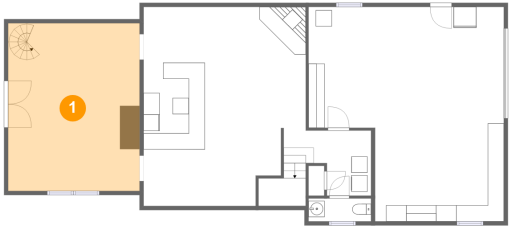
#		Max Dimensions	sqft	Included
6	Deck	11'9" x 7'9"	107 sq. ft	No
7	W.I.C.	3'3" x 7'5"	23 sq. ft	Yes
8	Bedroom	10'11" x 12'0"	131 sq. ft	Yes
9	Primary Bedroom	13'9" x 16'2"	200 sq. ft	Yes
10	Deck	8'0" x 9'9"	89 sq. ft	No
11	Bath	10'2" x 12'8"	93 sq. ft	Yes
12	Bedroom	10'6" x 12'0"	126 sq. ft	Yes
13	Dining Area	13'11" x 11'8"	169 sq. ft	Yes
14	Sunroom	16'4" x 20'9"	329 sq. ft	Yes
15	Foyer	5'10" x 3'5"	52 sq. ft	Yes
16	Porch	20'5" x 5'3"	109 sq. ft	No

Home report

1780 Ashton Drive, North Lebanon Township, Lebanon, Lebanon County, Pennsylvania, United States, 17046

#		Max Dimensions	sqft	Included
17	Hall	23'0" x 3'2"	73 sq. ft	Yes
18	Breakfast Nook	8'2" x 13'0"	106 sq. ft	Yes
19	Kitchen	12'0" x 13'0"	149 sq. ft	Yes
20	Screened Porch	13'4" x 7'9"	103 sq. ft	No

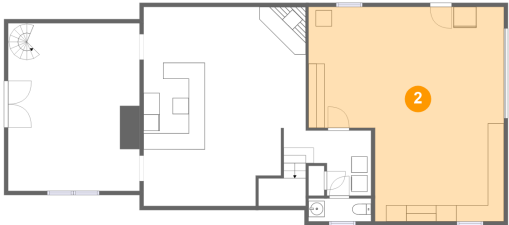
1 Floor 1 - Family Room



Max Dimensions: 16'3" x 20'9"
Calculated Area: 339 sq. ft
Included: Yes

Heated: Yes
Finished: Yes
Enclosed: Yes
Contiguous: Yes
Permitted: Yes
Wet space: No
Addition: No
Conversion: No

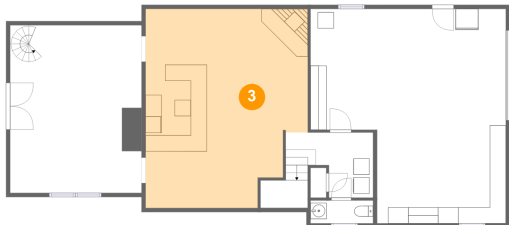
2 Floor 1 - Garage



Max Dimensions: 24'3" x 26'7"
Calculated Area: 548 sq. ft
Included: No

Heated: No
Finished: No
Enclosed: Yes
Contiguous: Yes
Permitted: Yes
Wet space: No
Addition: No
Conversion: No

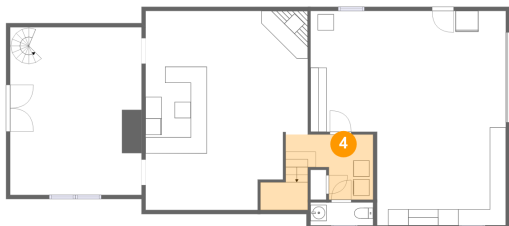
3 Floor 1 - Recreation Room



Max Dimensions: 20'1" x 24'8"
Calculated Area: 456 sq. ft
Included: Yes

Heated: Yes
Finished: Yes
Enclosed: Yes
Contiguous: Yes
Permitted: Yes
Wet space: No
Addition: No
Conversion: No

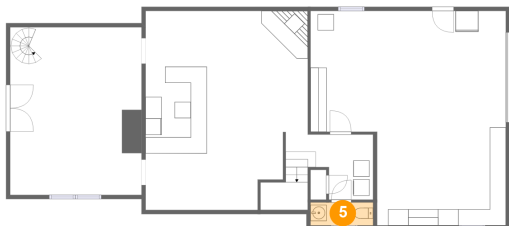
4 Floor 1 - Laundry



Max Dimensions: 10'10" x 8'1"
Calculated Area: 91 sq. ft
Included: Yes

Heated: Yes
Finished: Yes
Enclosed: Yes
Contiguous: Yes
Permitted: Yes
Wet space: No
Addition: No
Conversion: No

5 Floor 1 - WC



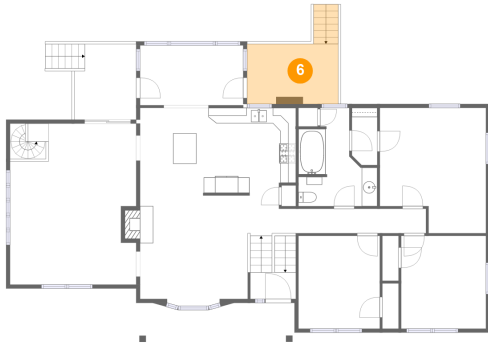
Max Dimensions: 7'9" x 2'10"
Calculated Area: 22 sq. ft
Included: Yes

Heated: Yes
Finished: Yes
Enclosed: Yes
Contiguous: Yes
Permitted: Yes
Wet space: Yes
Addition: No
Conversion: No

Home report

1780 Ashton Drive, North Lebanon Township, Lebanon, Lebanon County, Pennsylvania, United States, 17046

6 Floor 2 - Deck



Max Dimensions: 11'9" x 7'9"
Calculated Area: 107 sq. ft
Included: No

Heated: No
Finished: Yes
Enclosed: No
Contiguous: Yes
Permitted: Yes
Wet space: No
Addition: No
Conversion: No

7 Floor 2 - W.I.C.



Max Dimensions: 3'3" x 7'5"
Calculated Area: 23 sq. ft
Included: Yes

Heated: Yes
Finished: Yes
Enclosed: Yes
Contiguous: Yes
Permitted: Yes
Wet space: No
Addition: No
Conversion: No

8 Floor 2 - Bedroom



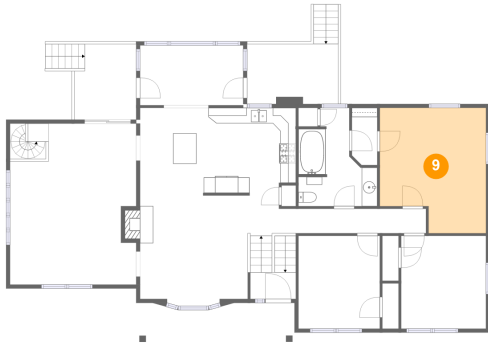
Max Dimensions: 10'11" x 12'0"
Calculated Area: 131 sq. ft
Included: Yes

Heated: Yes
Finished: Yes
Enclosed: Yes
Contiguous: Yes
Permitted: Yes
Wet space: No
Addition: No
Conversion: No

Home report

1780 Ashton Drive, North Lebanon Township, Lebanon, Lebanon County, Pennsylvania, United States, 17046

9 Floor 2 - Primary Bedroom



Max Dimensions: 13'9" x 16'2"
Calculated Area: 200 sq. ft
Included: Yes

Heated: Yes
Finished: Yes
Enclosed: Yes
Contiguous: Yes
Permitted: Yes
Wet space: No
Addition: No
Conversion: No

10 Floor 2 - Deck



Max Dimensions: 8'0" x 9'9"
Calculated Area: 89 sq. ft
Included: No

Heated: No
Finished: Yes
Enclosed: No
Contiguous: Yes
Permitted: Yes
Wet space: No
Addition: No
Conversion: No

11 Floor 2 - Bath



Max Dimensions: 10'2" x 12'8"
Calculated Area: 93 sq. ft
Included: Yes

Heated: Yes
Finished: Yes
Enclosed: Yes
Contiguous: Yes
Permitted: Yes
Wet space: Yes
Addition: No
Conversion: No

Home report

1780 Ashton Drive, North Lebanon Township, Lebanon, Lebanon County, Pennsylvania, United States, 17046

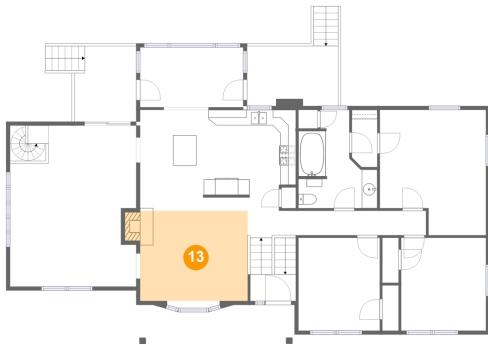
12 Floor 2 - Bedroom



Max Dimensions: 10'6" x 12'0"
Calculated Area: 126 sq. ft
Included: Yes

Heated: Yes
Finished: Yes
Enclosed: Yes
Contiguous: Yes
Permitted: Yes
Wet space: No
Addition: No
Conversion: No

13 Floor 2 - Dining Area



Max Dimensions: 13'11" x 11'8"
Calculated Area: 169 sq. ft
Included: Yes

Heated: Yes
Finished: Yes
Enclosed: Yes
Contiguous: Yes
Permitted: Yes
Wet space: No
Addition: No
Conversion: No

14 Floor 2 - Sunroom

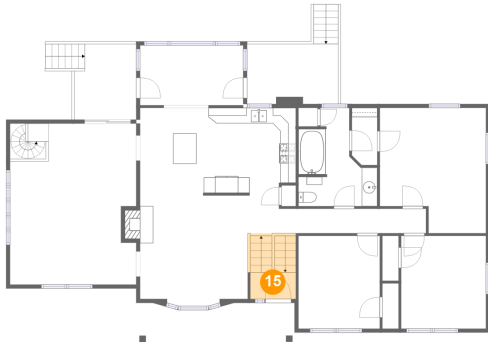


Max Dimensions: 16'4" x 20'9"
Calculated Area: 329 sq. ft
Included: Yes

Heated: Yes
Finished: Yes
Enclosed: Yes
Contiguous: Yes
Permitted: Yes
Wet space: No
Addition: No
Conversion: No

1780 Ashton Drive, North Lebanon Township, Lebanon, Lebanon County, Pennsylvania, United States, 17046

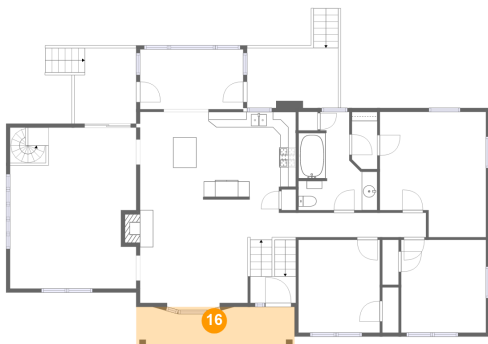
15 Floor 2 - Foyer



Max Dimensions: 5'10" x 3'5"
Calculated Area: 52 sq. ft
Included: Yes

Heated: Yes
Finished: Yes
Enclosed: Yes
Contiguous: Yes
Permitted: Yes
Wet space: No
Addition: No
Conversion: No

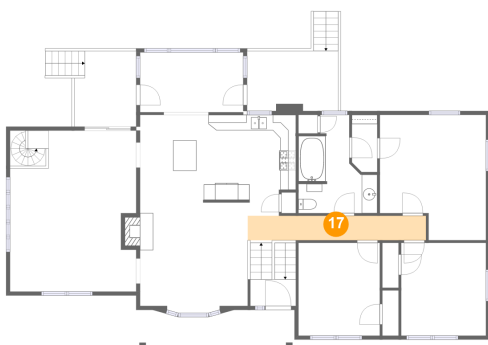
16 Floor 2 - Porch



Max Dimensions: 20'5" x 5'3"
Calculated Area: 109 sq. ft
Included: No

Heated: No
Finished: Yes
Enclosed: No
Contiguous: Yes
Permitted: Yes
Wet space: No
Addition: No
Conversion: No

17 Floor 2 - Hall



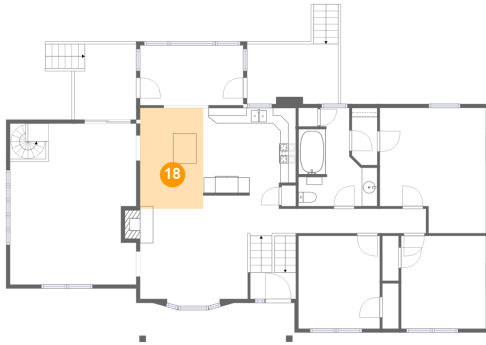
Max Dimensions: 23'0" x 3'2"
Calculated Area: 73 sq. ft
Included: Yes

Heated: Yes
Finished: Yes
Enclosed: Yes
Contiguous: Yes
Permitted: Yes
Wet space: No
Addition: No
Conversion: No

Home report

1780 Ashton Drive, North Lebanon Township, Lebanon, Lebanon County, Pennsylvania, United States, 17046

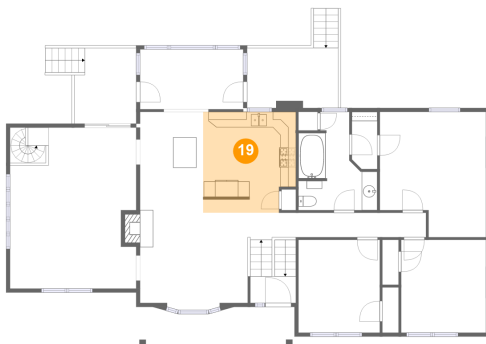
18 Floor 2 - Breakfast Nook



Max Dimensions: 8'2" x 13'0"
Calculated Area: 106 sq. ft
Included: Yes

Heated: Yes
Finished: Yes
Enclosed: Yes
Contiguous: Yes
Permitted: Yes
Wet space: No
Addition: No
Conversion: No

19 Floor 2 - Kitchen



Max Dimensions: 12'0" x 13'0"
Calculated Area: 149 sq. ft
Included: Yes

Heated: Yes
Finished: Yes
Enclosed: Yes
Contiguous: Yes
Permitted: Yes
Wet space: No
Addition: No
Conversion: No

20 Floor 2 - Screened Porch



Max Dimensions: 13'4" x 7'9"
Calculated Area: 103 sq. ft
Included: No

Heated: No
Finished: Yes
Enclosed: No
Contiguous: Yes
Permitted: Yes
Wet space: No
Addition: No
Conversion: No