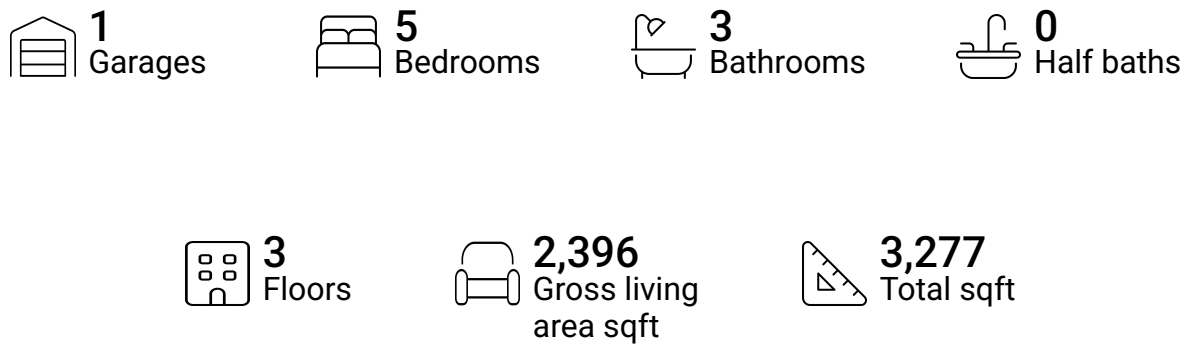


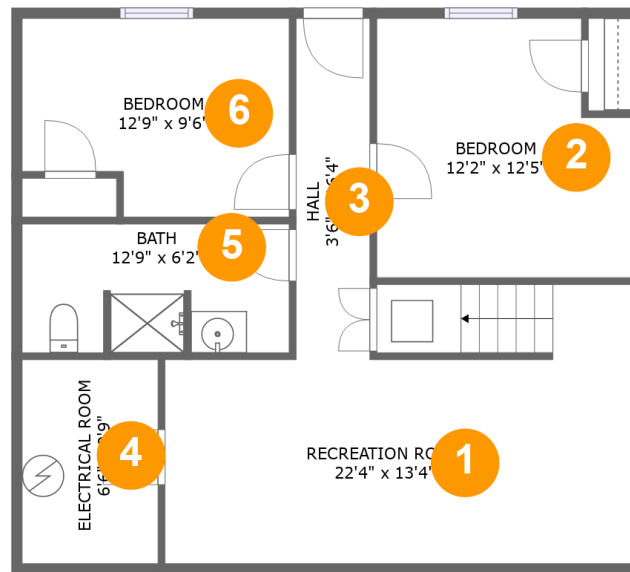
137 Chestnut Ln,Blue Ridge Acres,Harpers Ferry,WV,US, Blue Ridge Acres



Property summary



137 Chestnut Ln, Blue Ridge Acres, Harpers Ferry, WV, US, Blue Ridge Acres



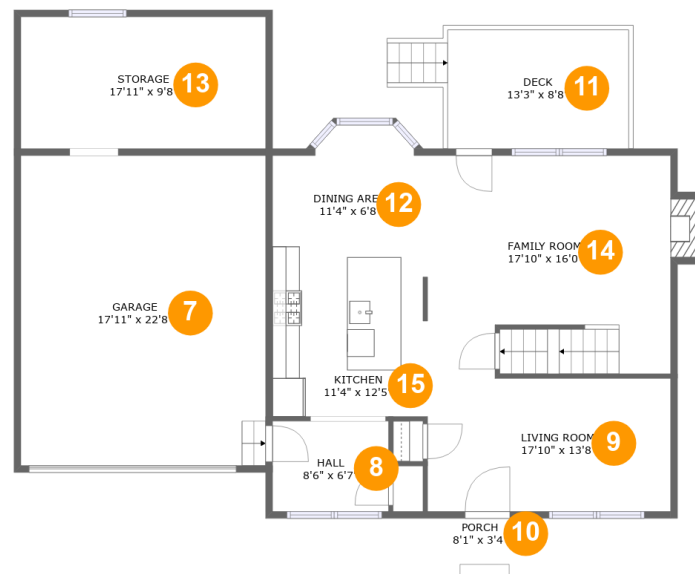
Room dimensions

Floor 1

Total sqft: 815 Living area: 743

#		Dimensions	sqft	Counted as living area
1	Recreation Room	22'4" x 13'4"	258 sq. ft	Yes
2	Bedroom	12'2" x 12'5"	139 sq. ft	Yes
3	Hall	3'6" x 16'4"	57 sq. ft	Yes
4	Electrical Room	6'6" x 9'9"	63 sq. ft	No
5	Bath	12'9" x 6'2"	76 sq. ft	Yes
6	Bedroom	12'9" x 9'6"	110 sq. ft	Yes

137 Chestnut Ln, Blue Ridge Acres, Harpers Ferry, WV, US, Blue Ridge Acres



Room dimensions

Floor 2

Total sqft: 1624 Living area: 815

#		Dimensions	sqft	Counted as living area
7	Garage	17'11" x 22'8"	406 sq. ft	No
8	Hall	8'6" x 6'7"	56 sq. ft	Yes
9	Living Room	17'10" x 13'8"	193 sq. ft	Yes
10	Porch	8'1" x 3'4"	29 sq. ft	No
11	Deck	13'3" x 8'8"	128 sq. ft	No
12	Dining Area	11'4" x 6'8"	76 sq. ft	Yes
13	Storage	17'11" x 9'8"	173 sq. ft	No
14	Family Room	17'10" x 16'0"	272 sq. ft	Yes
15	Kitchen	11'4" x 12'5"	141 sq. ft	Yes

137 Chestnut Ln,Blue Ridge Acres,Harpers Ferry,WV,US, Blue Ridge Acres



Room dimensions

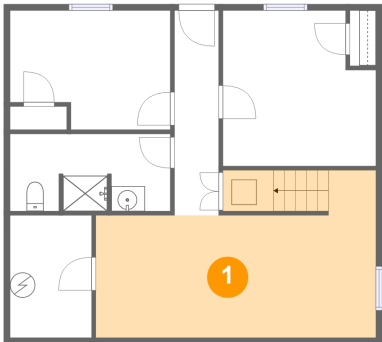
Floor 3

Total sqft: 838 Living area: 838

#		Dimensions	sqft	Counted as living area
16	Laundry	6'8" x 6'4"	42 sq. ft	Yes
17	Primary Bath	12'7" x 8'10"	96 sq. ft	Yes
18	Primary Bedroom	16'2" x 12'5"	200 sq. ft	Yes
19	Sitting Room	5'8" x 13'4"	94 sq. ft	Yes
20	Bedroom	11'9" x 9'9"	115 sq. ft	Yes
21	Bath	5'7" x 9'0"	51 sq. ft	Yes
22	Bedroom	11'0" x 9'9"	107 sq. ft	Yes

137 Chestnut Ln,Blue Ridge Acres,Harpers
Ferry,WV,US, Blue Ridge Acres

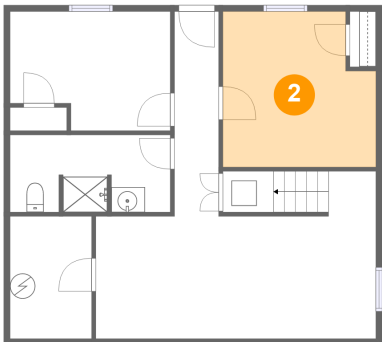
1 Floor 1 - Recreation Room



Dimensions: 22'4" x 13'4"
Area: 258 sq. ft
Counted as living area: Yes

Heated: Yes
Finished: Yes
Enclosed: Yes
Contiguous: Yes
Permitted: Yes
Wet space: No
Addition: No
Conversion: No

2 Floor 1 - Bedroom

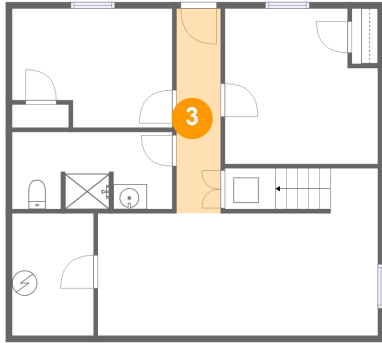


Dimensions: 12'2" x 12'5"
Area: 139 sq. ft
Counted as living area: Yes

Heated: Yes
Finished: Yes
Enclosed: Yes
Contiguous: Yes
Permitted: Yes
Wet space: No
Addition: No
Conversion: No

137 Chestnut Ln,Blue Ridge Acres,Harpers Ferry,WV,US, Blue Ridge Acres

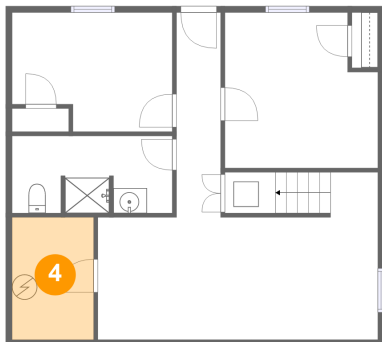
3 Floor 1 - Hall



Dimensions: 3'6" x 16'4"
Area: 57 sq. ft
Counted as living area: Yes

Heated: Yes
Finished: Yes
Enclosed: Yes
Contiguous: Yes
Permitted: Yes
Wet space: No
Addition: No
Conversion: No

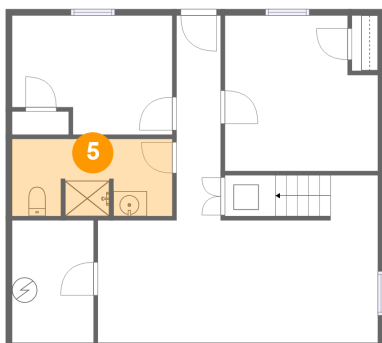
4 Floor 1 - Electrical Room



Dimensions: 6'6" x 9'9"
Area: 63 sq. ft
Counted as living area: No

Heated: No
Finished: No
Enclosed: Yes
Contiguous: Yes
Permitted: Yes
Wet space: No
Addition: No
Conversion: No

5 Floor 1 - Bath

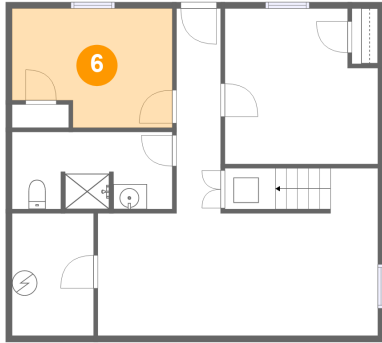


Dimensions: 12'9" x 6'2"
Area: 76 sq. ft
Counted as living area: Yes

Heated: Yes
Finished: Yes
Enclosed: Yes
Contiguous: Yes
Permitted: Yes
Wet space: Yes
Addition: No
Conversion: No

137 Chestnut Ln,Blue Ridge Acres,Harpers Ferry,WV,US, Blue Ridge Acres

6 Floor 1 - Bedroom



Dimensions: 12'9" x 9'6"
Area: 110 sq. ft
Counted as living area: Yes

Heated: Yes
Finished: Yes
Enclosed: Yes
Contiguous: Yes
Permitted: Yes
Wet space: No
Addition: No
Conversion: No

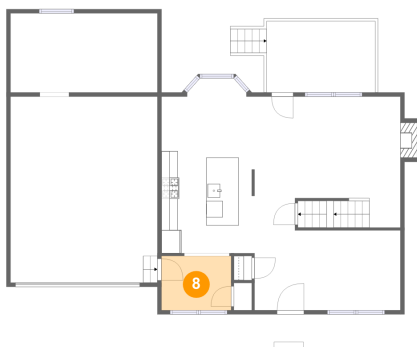
7 Floor 2 - Garage



Dimensions: 17'11" x 22'8"
Area: 406 sq. ft
Counted as living area: No

Heated: No
Finished: No
Enclosed: Yes
Contiguous: Yes
Permitted: Yes
Wet space: No
Addition: No
Conversion: No

8 Floor 2 - Hall

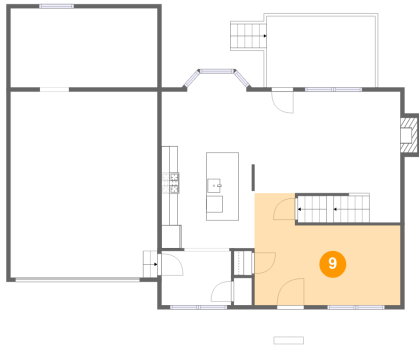


Dimensions: 8'6" x 6'7"
Area: 56 sq. ft
Counted as living area: Yes

Heated: Yes
Finished: Yes
Enclosed: Yes
Contiguous: Yes
Permitted: Yes
Wet space: No
Addition: No
Conversion: No

137 Chestnut Ln, Blue Ridge Acres, Harpers Ferry, WV, US, Blue Ridge Acres

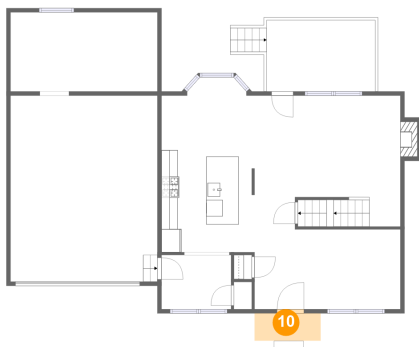
9 Floor 2 - Living Room



Dimensions: 17'10" x 13'8"
Area: 193 sq. ft
Counted as living area: Yes

Heated: Yes
Finished: Yes
Enclosed: Yes
Contiguous: Yes
Permitted: Yes
Wet space: No
Addition: No
Conversion: No

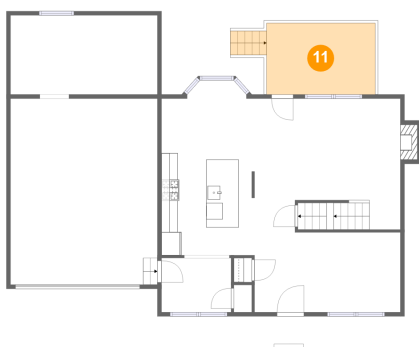
10 Floor 2 - Porch



Dimensions: 8'1" x 3'4"
Area: 29 sq. ft
Counted as living area: No

Heated: No
Finished: Yes
Enclosed: No
Contiguous: Yes
Permitted: Yes
Wet space: No
Addition: No
Conversion: No

11 Floor 2 - Deck



Dimensions: 13'3" x 8'8"
Area: 128 sq. ft
Counted as living area: No

Heated: No
Finished: Yes
Enclosed: No
Contiguous: Yes
Permitted: Yes
Wet space: No
Addition: No
Conversion: No

137 Chestnut Ln, Blue Ridge Acres, Harpers Ferry, WV, US, Blue Ridge Acres

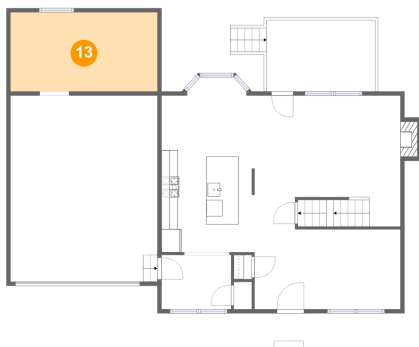
12 Floor 2 - Dining Area



Dimensions: 11'4" x 6'8"
Area: 76 sq. ft
Counted as living area: Yes

Heated: Yes
Finished: Yes
Enclosed: Yes
Contiguous: Yes
Permitted: Yes
Wet space: No
Addition: No
Conversion: No

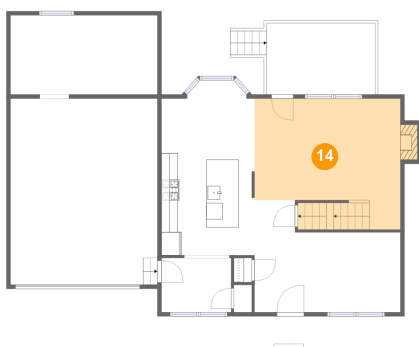
13 Floor 2 - Storage



Dimensions: 17'11" x 9'8"
Area: 173 sq. ft
Counted as living area: No

Heated: No
Finished: No
Enclosed: No
Contiguous: Yes
Permitted: Yes
Wet space: No
Addition: No
Conversion: No

14 Floor 2 - Family Room

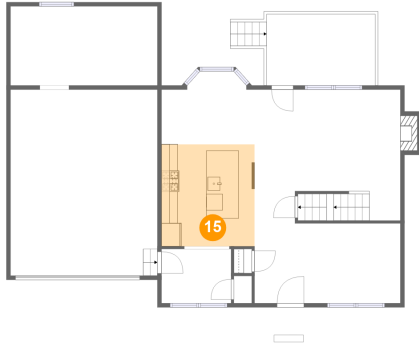


Dimensions: 17'10" x 16'0"
Area: 272 sq. ft
Counted as living area: Yes

Heated: Yes
Finished: Yes
Enclosed: Yes
Contiguous: Yes
Permitted: Yes
Wet space: No
Addition: No
Conversion: No

137 Chestnut Ln,Blue Ridge Acres,Harpers Ferry,WV,US, Blue Ridge Acres

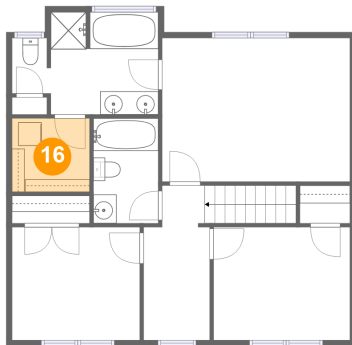
15 Floor 2 - Kitchen



Dimensions: 11'4" x 12'5"
Area: 141 sq. ft
Counted as living area: Yes

Heated: Yes
Finished: Yes
Enclosed: Yes
Contiguous: Yes
Permitted: Yes
Wet space: No
Addition: No
Conversion: No

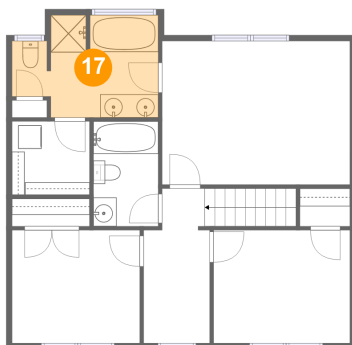
16 Floor 3 - Laundry



Dimensions: 6'8" x 6'4"
Area: 42 sq. ft
Counted as living area: Yes

Heated: Yes
Finished: Yes
Enclosed: Yes
Contiguous: Yes
Permitted: Yes
Wet space: No
Addition: No
Conversion: No

17 Floor 3 - Primary Bath

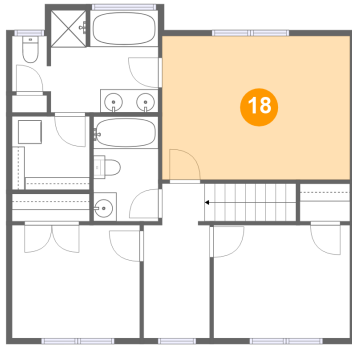


Dimensions: 12'7" x 8'10"
Area: 96 sq. ft
Counted as living area: Yes

Heated: Yes
Finished: Yes
Enclosed: Yes
Contiguous: Yes
Permitted: Yes
Wet space: Yes
Addition: No
Conversion: No

137 Chestnut Ln, Blue Ridge Acres, Harpers Ferry, WV, US, Blue Ridge Acres

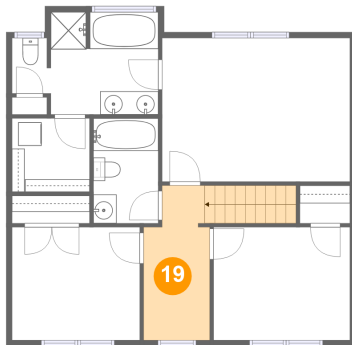
18 Floor 3 - Primary Bedroom



Dimensions: 16'2" x 12'5"
Area: 200 sq. ft
Counted as living area: Yes

Heated: Yes
Finished: Yes
Enclosed: Yes
Contiguous: Yes
Permitted: Yes
Wet space: No
Addition: No
Conversion: No

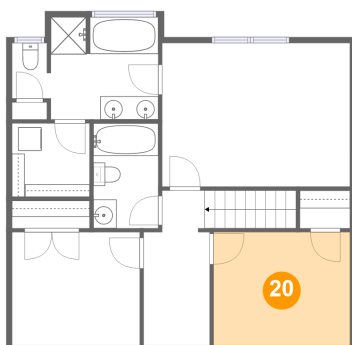
19 Floor 3 - Sitting Room



Dimensions: 5'8" x 13'4"
Area: 94 sq. ft
Counted as living area: Yes

Heated: Yes
Finished: Yes
Enclosed: Yes
Contiguous: Yes
Permitted: Yes
Wet space: No
Addition: No
Conversion: No

20 Floor 3 - Bedroom

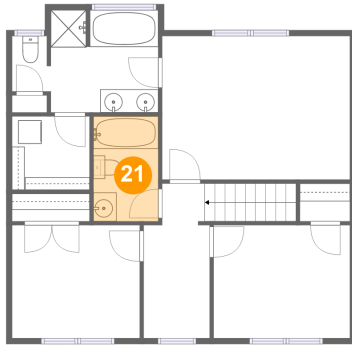


Dimensions: 11'9" x 9'9"
Area: 115 sq. ft
Counted as living area: Yes

Heated: Yes
Finished: Yes
Enclosed: Yes
Contiguous: Yes
Permitted: Yes
Wet space: No
Addition: No
Conversion: No

**137 Chestnut Ln,Blue Ridge Acres,Harpers
Ferry,WV,US, Blue Ridge Acres**

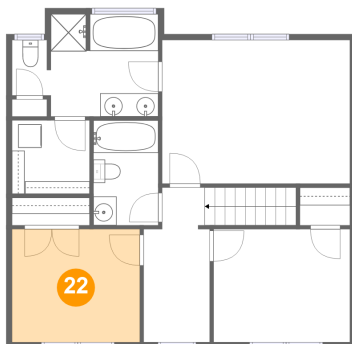
21 Floor 3 - Bath



Dimensions: 5'7" x 9'0"
Area: 51 sq. ft
Counted as living area: Yes

Heated: Yes
Finished: Yes
Enclosed: Yes
Contiguous: Yes
Permitted: Yes
Wet space: Yes
Addition: No
Conversion: No

22 Floor 3 - Bedroom



Dimensions: 11'0" x 9'9"
Area: 107 sq. ft
Counted as living area: Yes

Heated: Yes
Finished: Yes
Enclosed: Yes
Contiguous: Yes
Permitted: Yes
Wet space: No
Addition: No
Conversion: No