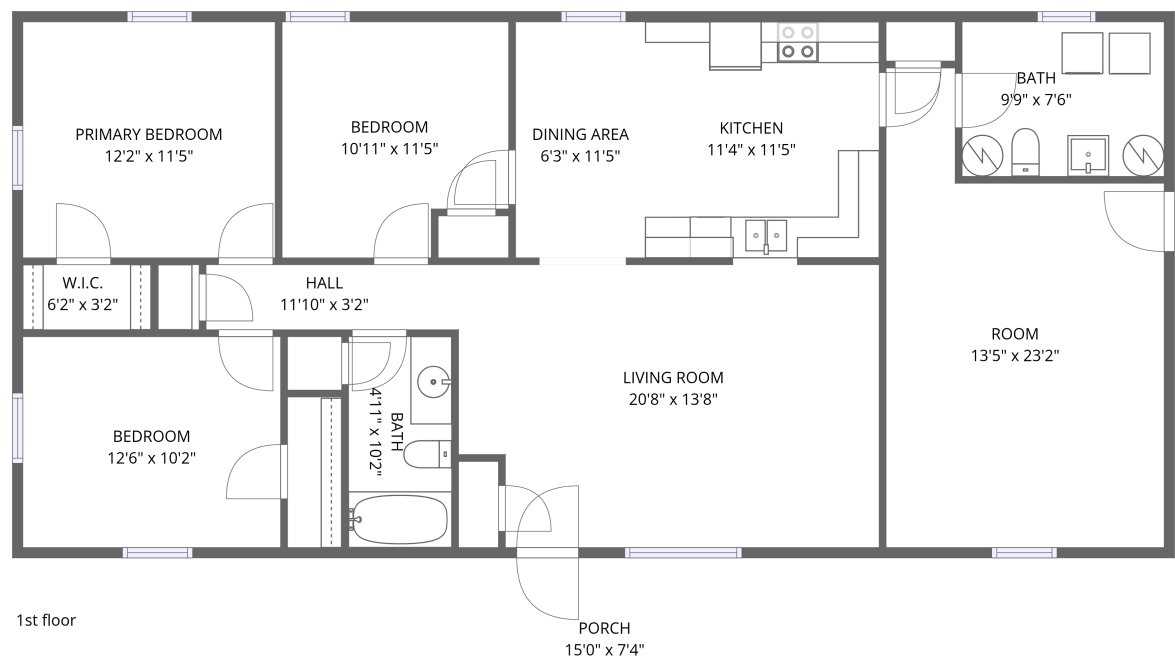


Home data report

7453 W County Road 85 N,Greensburg,IN,US



Total Area: 1402 sq. ft

1st Floor: 1402 sq. ft

Excluded: Porch 110 sq. ft, Walls: 82 sq. ft

Property summary

 **1** Floors

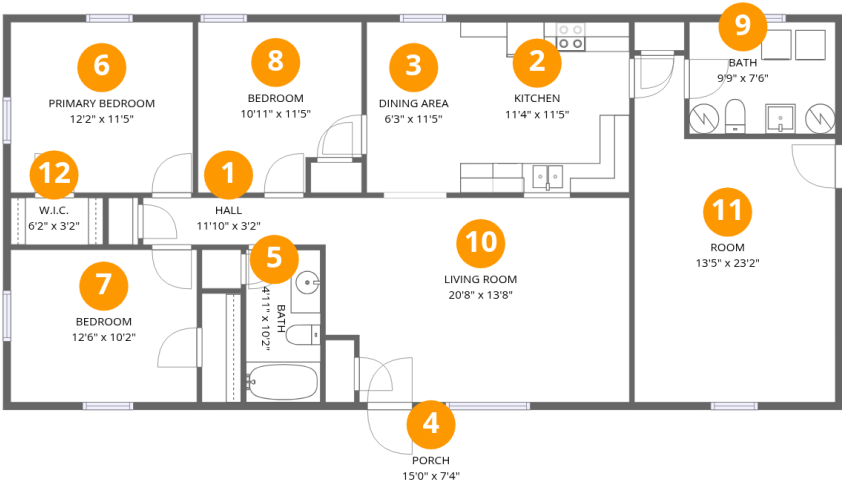
 **3** Bedrooms

 **1** Bathrooms

 **1** Half baths

Home data report

7453 W County Road 85 N, Greensburg, IN, US



Room dimensions

Floor 1

Total:1402sqft    Excluded: 110sqft

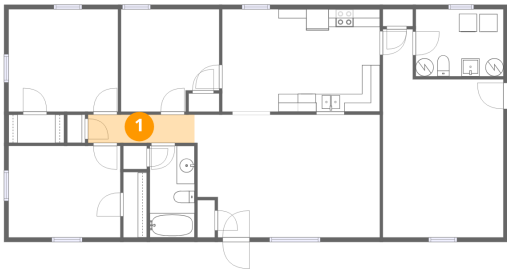
#		Dimensions	sqft	Counted as living area
1	Hall	11'10" x 3'2"	37 sq. ft	Yes
2	Kitchen	11'4" x 11'5"	130 sq. ft	Yes
3	Dining Area	6'3" x 11'5"	72 sq. ft	Yes
4	Porch	15'0" x 7'4"	110 sq. ft	No
5	Bath	4'11" x 10'2"	51 sq. ft	Yes
6	Primary Bedroom	12'2" x 11'5"	139 sq. ft	Yes
7	Bedroom	12'6" x 10'2"	127 sq. ft	Yes
8	Bedroom	10'11" x 11'5"	116 sq. ft	Yes
9	Bath	9'9" x 7'6"	73 sq. ft	Yes
10	Living Room	20'8" x 13'8"	269 sq. ft	Yes
11	Room	13'5" x 23'2"	255 sq. ft	Yes

Home data report

7453 W County Road 85 N, Greensburg, IN, US

#		Dimensions	sqft	Counted as living area
12	W.I.C.	6'2" x 3'2"	19 sq. ft	Yes

1 Floor 1 - Hall



Dimensions: 11'10" x 3'2"  
Area: 37 sq. ft  
Counted as living area: Yes

Heated: Yes  
Finished: Yes  
Enclosed: Yes  
Contiguous: Yes  
Permitted: Yes  
Wet space: No  
Addition: No  
Conversion: No

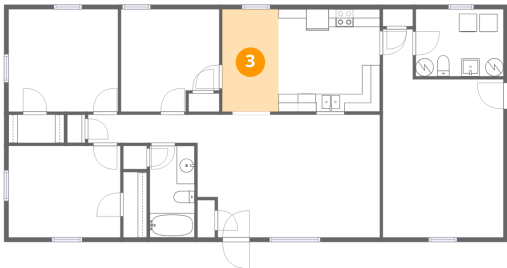
2 Floor 1 - Kitchen



Dimensions: 11'4" x 11'5"  
Area: 130 sq. ft  
Counted as living area: Yes

Heated: Yes  
Finished: Yes  
Enclosed: Yes  
Contiguous: Yes  
Permitted: Yes  
Wet space: No  
Addition: No  
Conversion: No

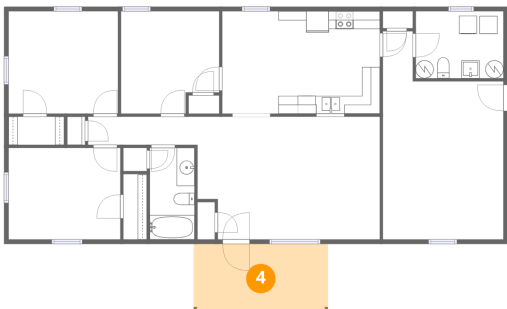
3 Floor 1 - Dining Area



Dimensions: 6'3" x 11'5"  
Area: 72 sq. ft  
Counted as living area: Yes

Heated: Yes  
Finished: Yes  
Enclosed: Yes  
Contiguous: Yes  
Permitted: Yes  
Wet space: No  
Addition: No  
Conversion: No

4 Floor 1 - Porch



Dimensions: 15'0" x 7'4"  
Area: 110 sq. ft  
Counted as living area: No

Heated: No  
Finished: No  
Enclosed: No  
Contiguous: Yes  
Permitted: Yes  
Wet space: No  
Addition: No  
Conversion: No

5 Floor 1 - Bath



Dimensions: 4'11" x 10'2"  
Area: 51 sq. ft  
Counted as living area: Yes

Heated: Yes  
Finished: Yes  
Enclosed: Yes  
Contiguous: Yes  
Permitted: Yes  
Wet space: Yes  
Addition: No  
Conversion: No

6 Floor 1 - Primary Bedroom



Dimensions: 12'2" x 11'5"  
Area: 139 sq. ft  
Counted as living area: Yes

Heated: Yes  
Finished: Yes  
Enclosed: Yes  
Contiguous: Yes  
Permitted: Yes  
Wet space: No  
Addition: No  
Conversion: No

7 Floor 1 - Bedroom



Dimensions: 12'6" x 10'2"  
Area: 127 sq. ft  
Counted as living area: Yes

Heated: Yes  
Finished: Yes  
Enclosed: Yes  
Contiguous: Yes  
Permitted: Yes  
Wet space: No  
Addition: No  
Conversion: No

8 Floor 1 - Bedroom



Dimensions: 10'11" x 11'5"  
Area: 116 sq. ft  
Counted as living area: Yes

Heated: Yes  
Finished: Yes  
Enclosed: Yes  
Contiguous: Yes  
Permitted: Yes  
Wet space: No  
Addition: No  
Conversion: No

9 Floor 1 - Bath



Dimensions: 9'9" x 7'6"  
Area: 73 sq. ft  
Counted as living area: Yes

Heated: Yes  
Finished: Yes  
Enclosed: Yes  
Contiguous: Yes  
Permitted: Yes  
Wet space: Yes  
Addition: No  
Conversion: No

10 Floor 1 - Living Room



Dimensions: 20'8" x 13'8"  
Area: 269 sq. ft  
Counted as living area: Yes

Heated: Yes  
Finished: Yes  
Enclosed: Yes  
Contiguous: Yes  
Permitted: Yes  
Wet space: No  
Addition: No  
Conversion: No

11 Floor 1 - Room



Dimensions: 13'5" x 23'2"  
Area: 255 sq. ft  
Counted as living area: Yes

Heated: Yes  
Finished: Yes  
Enclosed: Yes  
Contiguous: Yes  
Permitted: Yes  
Wet space: No  
Addition: No  
Conversion: No

12 Floor 1 - W.I.C.



Dimensions: 6'2" x 3'2"  
Area: 19 sq. ft  
Counted as living area: Yes

Heated: Yes  
Finished: Yes  
Enclosed: Yes  
Contiguous: Yes  
Permitted: Yes  
Wet space: No  
Addition: No  
Conversion: No