

Home report

17026 Medici Way, Montverde, Lake County, Florida, United States, 34756




Total Area: 4281 sq. ft

Floor 1: 4281 sq. ft

Excluded: Garage 930 sq. ft, Walls: 251 sq. ft

Property summary

1
Floors

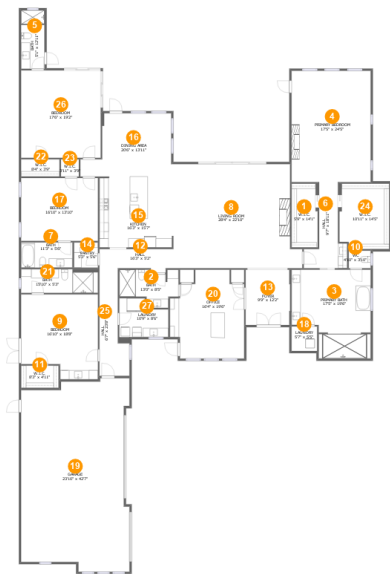
4
Bedrooms

5
Bathrooms

1
Garages

Home report

17026 Medici Way, Montverde, Lake County, Florida, United States, 34756



Room dimensions

Floor 1 Total:4281sqft Excluded: 930sqft

#		Max Dimensions	sqft	Included
1	W.I.C.	5'9" x 14'1"	78 sq. ft	Yes
2	Bath	13'0" x 8'5"	84 sq. ft	Yes
3	Primary Bath	17'5" x 19'6"	294 sq. ft	Yes
4	Primary Bedroom	17'5" x 24'5"	425 sq. ft	Yes
5	Bath	5'1" x 12'11"	66 sq. ft	Yes
6	Hall	9'7" x 18'11"	104 sq. ft	Yes
7	Bath	11'3" x 5'6"	62 sq. ft	Yes
8	Living Room	28'4" x 22'10"	598 sq. ft	Yes
9	Bedroom	16'10" x 18'8"	286 sq. ft	Yes
10	WC	4'10" x 3'10"	18 sq. ft	Yes
11	W.I.C.	8'3" x 4'11"	40 sq. ft	Yes

Home report

17026 Medici Way, Montverde, Lake County, Florida, United States, 34756

#		Max Dimensions	sqft	Included
12	Hall	16'3" x 5'2"	72 sq. ft	Yes
13	Foyer	9'9" x 12'2"	118 sq. ft	Yes
14	Pantry	5'3" x 5'6"	29 sq. ft	Yes
15	Kitchen	16'3" x 15'7"	252 sq. ft	Yes
16	Dining Area	20'6" x 13'11"	230 sq. ft	Yes
17	Bedroom	16'10" x 13'10"	233 sq. ft	Yes
18	Laundry	5'7" x 5'5"	30 sq. ft	Yes
19	Garage	23'10" x 42'7"	929 sq. ft	No
20	Office	16'4" x 19'6"	274 sq. ft	Yes
21	Bath	15'10" x 5'3"	89 sq. ft	Yes
22	W.I.C.	8'4" x 3'9"	32 sq. ft	Yes
23	W.I.C.	3'11" x 3'9"	15 sq. ft	Yes
24	W.I.C.	10'11" x 14'5"	152 sq. ft	Yes
25	Hall	6'7" x 23'8"	114 sq. ft	Yes
26	Bedroom	17'6" x 19'2"	336 sq. ft	Yes
27	Laundry	10'9" x 8'6"	82 sq. ft	Yes

17026 Medici Way, Montverde, Lake County, Florida, United States, 34756

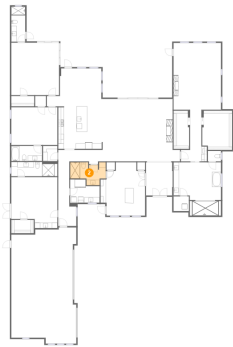
1 Floor 1 - W.I.C.



Max Dimensions: 5'9" x 14'1"
Calculated Area: 78 sq. ft
Included: Yes

Heated: Yes
Finished: Yes
Enclosed: Yes
Contiguous: Yes
Permitted: Yes
Wet space: No
Addition: No
Conversion: No

2 Floor 1 - Bath

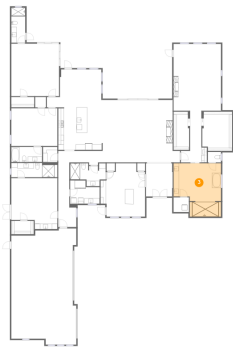


Max Dimensions: 13'0" x 8'5"
Calculated Area: 84 sq. ft
Included: Yes

Heated: Yes
Finished: Yes
Enclosed: Yes
Contiguous: Yes
Permitted: Yes
Wet space: Yes
Addition: No
Conversion: No

17026 Medici Way, Montverde, Lake County, Florida, United States, 34756

3 Floor 1 - Primary Bath



Max Dimensions: 17'5" x 19'6"
Calculated Area: 294 sq. ft
Included: Yes

Heated: Yes
Finished: Yes
Enclosed: Yes
Contiguous: Yes
Permitted: Yes
Wet space: Yes
Addition: No
Conversion: No

4 Floor 1 - Primary Bedroom



Max Dimensions: 17'5" x 24'5"
Calculated Area: 425 sq. ft
Included: Yes

Heated: Yes
Finished: Yes
Enclosed: Yes
Contiguous: Yes
Permitted: Yes
Wet space: No
Addition: No
Conversion: No

5 Floor 1 - Bath



Max Dimensions: 5'1" x 12'11"
Calculated Area: 66 sq. ft
Included: Yes

Heated: Yes
Finished: Yes
Enclosed: Yes
Contiguous: Yes
Permitted: Yes
Wet space: Yes
Addition: No
Conversion: No

17026 Medici Way, Montverde, Lake County, Florida, United States, 34756

6 Floor 1 - Hall



Max Dimensions: 9'7" x 18'11"
Calculated Area: 104 sq. ft
Included: Yes

Heated: Yes
Finished: Yes
Enclosed: Yes
Contiguous: Yes
Permitted: Yes
Wet space: No
Addition: No
Conversion: No

7 Floor 1 - Bath



Max Dimensions: 11'3" x 5'6"
Calculated Area: 62 sq. ft
Included: Yes

Heated: Yes
Finished: Yes
Enclosed: Yes
Contiguous: Yes
Permitted: Yes
Wet space: Yes
Addition: No
Conversion: No

8 Floor 1 - Living Room

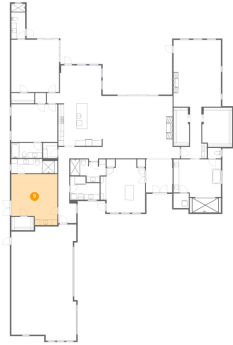


Max Dimensions: 28'4" x 22'10"
Calculated Area: 598 sq. ft
Included: Yes

Heated: Yes
Finished: Yes
Enclosed: Yes
Contiguous: Yes
Permitted: Yes
Wet space: No
Addition: No
Conversion: No

17026 Medici Way, Montverde, Lake County, Florida, United States, 34756

9 Floor 1 - Bedroom



Max Dimensions: 16'10" x 18'8"
Calculated Area: 286 sq. ft
Included: Yes

Heated: Yes
Finished: Yes
Enclosed: Yes
Contiguous: Yes
Permitted: Yes
Wet space: No
Addition: No
Conversion: No

10 Floor 1 - WC



Max Dimensions: 4'10" x 3'10"
Calculated Area: 18 sq. ft
Included: Yes

Heated: Yes
Finished: Yes
Enclosed: Yes
Contiguous: Yes
Permitted: Yes
Wet space: Yes
Addition: No
Conversion: No

11 Floor 1 - W.I.C.



Max Dimensions: 8'3" x 4'11"
Calculated Area: 40 sq. ft
Included: Yes

Heated: Yes
Finished: Yes
Enclosed: Yes
Contiguous: Yes
Permitted: Yes
Wet space: No
Addition: No
Conversion: No

17026 Medici Way, Montverde, Lake County, Florida, United States, 34756

12 Floor 1 - Hall



Max Dimensions: 16'3" x 5'2"
Calculated Area: 72 sq. ft
Included: Yes

Heated: Yes
Finished: Yes
Enclosed: Yes
Contiguous: Yes
Permitted: Yes
Wet space: No
Addition: No
Conversion: No

13 Floor 1 - Foyer



Max Dimensions: 9'9" x 12'2"
Calculated Area: 118 sq. ft
Included: Yes

Heated: Yes
Finished: Yes
Enclosed: Yes
Contiguous: Yes
Permitted: Yes
Wet space: No
Addition: No
Conversion: No

14 Floor 1 - Pantry

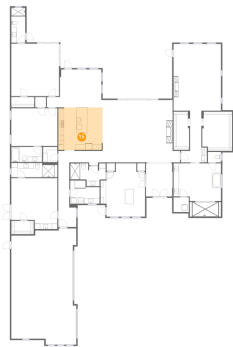


Max Dimensions: 5'3" x 5'6"
Calculated Area: 29 sq. ft
Included: Yes

Heated: Yes
Finished: Yes
Enclosed: Yes
Contiguous: Yes
Permitted: Yes
Wet space: No
Addition: No
Conversion: No

17026 Medici Way, Montverde, Lake County, Florida, United States, 34756

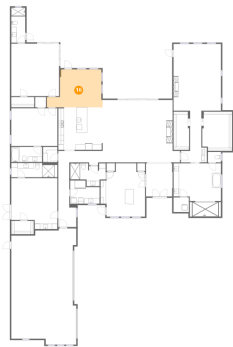
15 Floor 1 - Kitchen



Max Dimensions: 16'3" x 15'7"
Calculated Area: 252 sq. ft
Included: Yes

Heated: Yes
Finished: Yes
Enclosed: Yes
Contiguous: Yes
Permitted: Yes
Wet space: No
Addition: No
Conversion: No

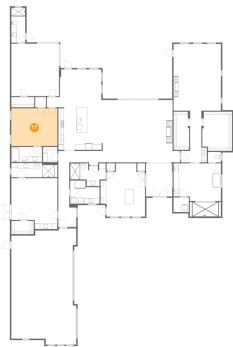
16 Floor 1 - Dining Area



Max Dimensions: 20'6" x 13'11"
Calculated Area: 230 sq. ft
Included: Yes

Heated: Yes
Finished: Yes
Enclosed: Yes
Contiguous: Yes
Permitted: Yes
Wet space: No
Addition: No
Conversion: No

17 Floor 1 - Bedroom



Max Dimensions: 16'10" x 13'10"
Calculated Area: 233 sq. ft
Included: Yes

Heated: Yes
Finished: Yes
Enclosed: Yes
Contiguous: Yes
Permitted: Yes
Wet space: No
Addition: No
Conversion: No

17026 Medici Way, Montverde, Lake County, Florida, United States, 34756

18 Floor 1 - Laundry



Max Dimensions: 5'7" x 5'5"
Calculated Area: 30 sq. ft
Included: Yes

Heated: Yes
Finished: Yes
Enclosed: Yes
Contiguous: Yes
Permitted: Yes
Wet space: No
Addition: No
Conversion: No

19 Floor 1 - Garage



Max Dimensions: 23'10" x 42'7"
Calculated Area: 929 sq. ft
Included: No

Heated: No
Finished: No
Enclosed: Yes
Contiguous: Yes
Permitted: Yes
Wet space: No
Addition: No
Conversion: No

20 Floor 1 - Office



Max Dimensions: 16'4" x 19'6"
Calculated Area: 274 sq. ft
Included: Yes

Heated: Yes
Finished: Yes
Enclosed: Yes
Contiguous: Yes
Permitted: Yes
Wet space: No
Addition: No
Conversion: No

17026 Medici Way, Montverde, Lake County, Florida, United States, 34756

21 Floor 1 - Bath



Max Dimensions: 15'10" x 5'3"
Calculated Area: 89 sq. ft
Included: Yes

Heated: Yes
Finished: Yes
Enclosed: Yes
Contiguous: Yes
Permitted: Yes
Wet space: Yes
Addition: No
Conversion: No

22 Floor 1 - W.I.C.



Max Dimensions: 8'4" x 3'9"
Calculated Area: 32 sq. ft
Included: Yes

Heated: Yes
Finished: Yes
Enclosed: Yes
Contiguous: Yes
Permitted: Yes
Wet space: No
Addition: No
Conversion: No

23 Floor 1 - W.I.C.

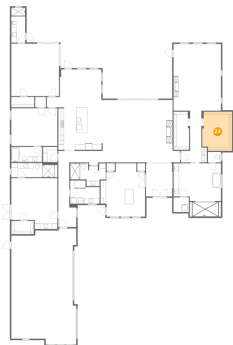


Max Dimensions: 3'11" x 3'9"
Calculated Area: 15 sq. ft
Included: Yes

Heated: Yes
Finished: Yes
Enclosed: Yes
Contiguous: Yes
Permitted: Yes
Wet space: No
Addition: No
Conversion: No

17026 Medici Way, Montverde, Lake County, Florida, United States, 34756

24 Floor 1 - W.I.C.



Max Dimensions: 10'11" x 14'5"
Calculated Area: 152 sq. ft
Included: Yes

Heated: Yes
Finished: Yes
Enclosed: Yes
Contiguous: Yes
Permitted: Yes
Wet space: No
Addition: No
Conversion: No

25 Floor 1 - Hall



Max Dimensions: 6'7" x 23'8"
Calculated Area: 114 sq. ft
Included: Yes

Heated: Yes
Finished: Yes
Enclosed: Yes
Contiguous: Yes
Permitted: Yes
Wet space: No
Addition: No
Conversion: No

26 Floor 1 - Bedroom



Max Dimensions: 17'6" x 19'2"
Calculated Area: 336 sq. ft
Included: Yes

Heated: Yes
Finished: Yes
Enclosed: Yes
Contiguous: Yes
Permitted: Yes
Wet space: No
Addition: No
Conversion: No

17026 Medici Way, Montverde, Lake County, Florida, United States, 34756

27 Floor 1 - Laundry



Max Dimensions: 10'9" x 8'6"
Calculated Area: 82 sq. ft
Included: Yes

Heated: Yes
Finished: Yes
Enclosed: Yes
Contiguous: Yes
Permitted: Yes
Wet space: No
Addition: No
Conversion: No