

Home report

5350 Northeast 96th Street, Kansas City, Clay County, Missouri,
United States, 64156



Total Area: 4423 sq. ft

Below Ground: 1372 sq. ft, Floor 2: 3051 sq. ft

Excluded: Utility 144 sq. ft, Garage 1941 sq. ft, Storage 344 sq. ft, Outdoor Deck 279 sq. ft,
Outdoor Deck Covered 231 sq. ft, Walls: 344 sq. ft

Property summary

 **2** Floors

 **5** Bedrooms

 **3** Bathrooms

Home report

**5350 Northeast 96th Street, Kansas City, Clay County, Missouri,
United States, 64156**



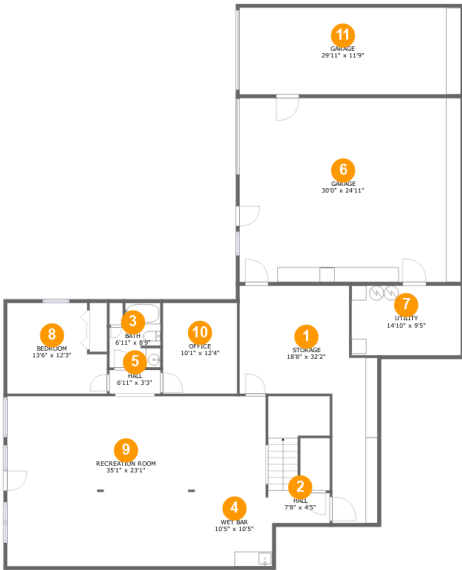
2
Half baths



3
Garages

Home report

5350 Northeast 96th Street, Kansas City, Clay County, Missouri,
United States, 64156



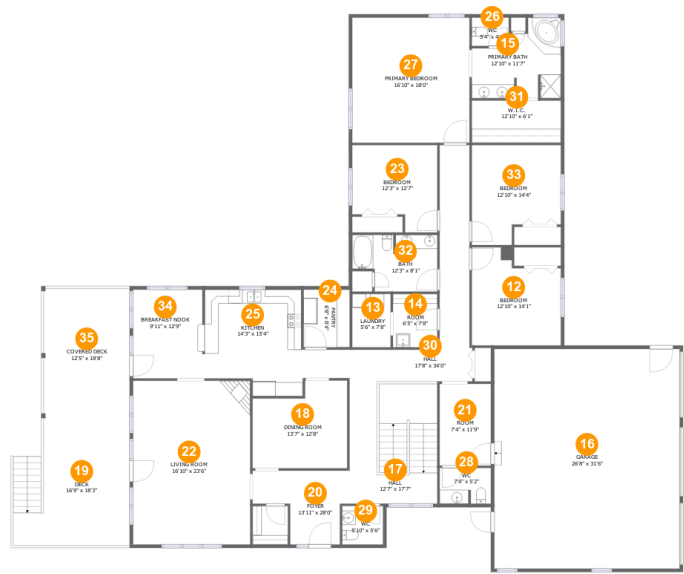
Room dimensions

Floor 1 Below ground Total:1372sqft Excluded: 1588sqft

#		Max Dimensions	sqft	Included
1	Storage	18'8" x 32'2"	344 sq. ft	No
2	Hall	7'8" x 4'5"	108 sq. ft	Yes
3	Bath	6'11" x 8'9"	53 sq. ft	Yes
4	Wet Bar	10'5" x 10'5"	108 sq. ft	Yes
5	Hall	6'11" x 3'3"	22 sq. ft	Yes
6	Garage	30'0" x 24'11"	748 sq. ft	No
7	Utility	14'10" x 9'5"	140 sq. ft	No
8	Bedroom	13'6" x 12'3"	148 sq. ft	Yes
9	Recreation Room	35'1" x 23'1"	710 sq. ft	Yes
10	Office	10'1" x 12'4"	124 sq. ft	Yes
11	Garage	29'11" x 11'9"	352 sq. ft	No

Home report

5350 Northeast 96th Street, Kansas City, Clay County, Missouri,
United States, 64156



Room dimensions

Floor 2 Total:3051sqft Excluded: 1351sqft

#		Max Dimensions	sqft	Included
12	Bedroom	12'10" x 14'1"	159 sq. ft	Yes
13	Laundry	5'6" x 7'8"	42 sq. ft	Yes
14	Room	6'5" x 7'8"	49 sq. ft	Yes
15	Primary Bath	12'10" x 11'7"	116 sq. ft	Yes
16	Garage	26'8" x 31'6"	841 sq. ft	No
17	Hall	12'7" x 17'7"	221 sq. ft	Yes
18	Dining Room	13'7" x 12'8"	152 sq. ft	Yes
19	Deck	16'9" x 18'3"	279 sq. ft	No
20	Foyer	13'11" x 28'0"	137 sq. ft	Yes
21	Room	7'4" x 11'9"	87 sq. ft	Yes
22	Living Room	16'10" x 23'6"	396 sq. ft	Yes

Home report

**5350 Northeast 96th Street, Kansas City, Clay County, Missouri,
United States, 64156**

#		Max Dimensions	sqft	Included
23	Bedroom	12'3" x 12'7"	134 sq. ft	Yes
24	Pantry	6'8" x 8'4"	55 sq. ft	Yes
25	Kitchen	14'3" x 15'4"	198 sq. ft	Yes
26	WC	5'4" x 4'1"	22 sq. ft	Yes
27	Primary Bedroom	16'10" x 18'0"	303 sq. ft	Yes
28	WC	7'4" x 5'2"	37 sq. ft	Yes
29	WC	5'10" x 5'6"	32 sq. ft	Yes
30	Hall	17'8" x 34'0"	207 sq. ft	Yes
31	W.I.C.	12'10" x 6'1"	78 sq. ft	Yes
32	Bath	12'3" x 8'1"	88 sq. ft	Yes
33	Bedroom	12'10" x 14'4"	163 sq. ft	Yes
34	Breakfast Nook	9'11" x 12'9"	127 sq. ft	Yes
35	Covered Deck	12'5" x 18'8"	231 sq. ft	No

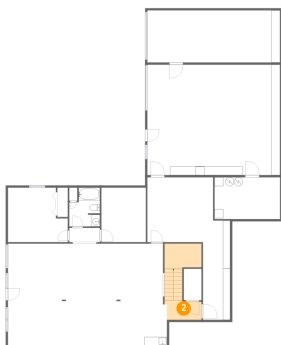
1 Floor 1 - Storage



Max Dimensions: 18'8" x 32'2"
Calculated Area: 344 sq. ft
Included: No

Heated: No
Finished: No
Enclosed: No
Contiguous: Yes
Permitted: Yes
Wet space: No
Addition: No
Conversion: No

2 Floor 1 - Hall



Max Dimensions: 7'8" x 4'5"
Calculated Area: 108 sq. ft
Included: Yes

Heated: Yes
Finished: Yes
Enclosed: Yes
Contiguous: Yes
Permitted: Yes
Wet space: No
Addition: No
Conversion: No

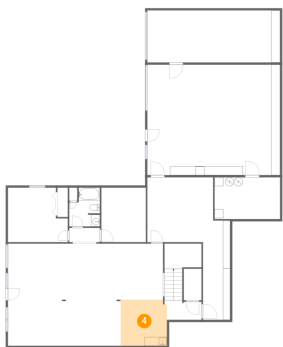
3 Floor 1 - Bath



Max Dimensions: 6'11" x 8'9"
Calculated Area: 53 sq. ft
Included: Yes

Heated: Yes
Finished: Yes
Enclosed: Yes
Contiguous: Yes
Permitted: Yes
Wet space: Yes
Addition: No
Conversion: No

4 Floor 1 - Wet Bar



Max Dimensions: 10'5" x 10'5"
Calculated Area: 108 sq. ft
Included: Yes

Heated: Yes
Finished: Yes
Enclosed: Yes
Contiguous: Yes
Permitted: Yes
Wet space: No
Addition: No
Conversion: No

5 Floor 1 - Hall



Max Dimensions: 6'11" x 3'3"
Calculated Area: 22 sq. ft
Included: Yes

Heated: Yes
Finished: Yes
Enclosed: Yes
Contiguous: Yes
Permitted: Yes
Wet space: No
Addition: No
Conversion: No

5350 Northeast 96th Street, Kansas City, Clay County, Missouri,
United States, 64156

6 Floor 1 - Garage



Max Dimensions: 30'0" x 24'11"
Calculated Area: 748 sq. ft
Included: No

Heated: No
Finished: No
Enclosed: Yes
Contiguous: Yes
Permitted: Yes
Wet space: No
Addition: No
Conversion: No

7 Floor 1 - Utility



Max Dimensions: 14'10" x 9'5"
Calculated Area: 140 sq. ft
Included: No

Heated: Yes
Finished: No
Enclosed: Yes
Contiguous: Yes
Permitted: Yes
Wet space: No
Addition: No
Conversion: No

8 Floor 1 - Bedroom



Max Dimensions: 13'6" x 12'3"
Calculated Area: 148 sq. ft
Included: Yes

Heated: Yes
Finished: Yes
Enclosed: Yes
Contiguous: Yes
Permitted: Yes
Wet space: No
Addition: No
Conversion: No

9 Floor 1 - Recreation Room



Max Dimensions: 35'1" x 23'1"
Calculated Area: 710 sq. ft
Included: Yes

Heated: Yes
Finished: Yes
Enclosed: Yes
Contiguous: Yes
Permitted: Yes
Wet space: No
Addition: No
Conversion: No

10 Floor 1 - Office



Max Dimensions: 10'1" x 12'4"
Calculated Area: 124 sq. ft
Included: Yes

Heated: Yes
Finished: Yes
Enclosed: Yes
Contiguous: Yes
Permitted: Yes
Wet space: No
Addition: No
Conversion: No

11 Floor 1 - Garage



Max Dimensions: 29'11" x 11'9"
Calculated Area: 352 sq. ft
Included: No

Heated: No
Finished: No
Enclosed: Yes
Contiguous: Yes
Permitted: Yes
Wet space: No
Addition: No
Conversion: No

5350 Northeast 96th Street, Kansas City, Clay County, Missouri,
United States, 64156

12 Floor 2 - Bedroom



Max Dimensions: 12'10" x 14'1"
Calculated Area: 159 sq. ft
Included: Yes

Heated: Yes
Finished: Yes
Enclosed: Yes
Contiguous: Yes
Permitted: Yes
Wet space: No
Addition: No
Conversion: No

13 Floor 2 - Laundry



Max Dimensions: 5'6" x 7'8"
Calculated Area: 42 sq. ft
Included: Yes

Heated: Yes
Finished: Yes
Enclosed: Yes
Contiguous: Yes
Permitted: Yes
Wet space: No
Addition: No
Conversion: No

14 Floor 2 - Room



Max Dimensions: 6'5" x 7'8"
Calculated Area: 49 sq. ft
Included: Yes

Heated: Yes
Finished: Yes
Enclosed: Yes
Contiguous: Yes
Permitted: Yes
Wet space: No
Addition: No
Conversion: No

5350 Northeast 96th Street, Kansas City, Clay County, Missouri,
United States, 64156

15 Floor 2 - Primary Bath



Max Dimensions: 12'10" x 11'7"
Calculated Area: 116 sq. ft
Included: Yes

Heated: Yes
Finished: Yes
Enclosed: Yes
Contiguous: Yes
Permitted: Yes
Wet space: Yes
Addition: No
Conversion: No

16 Floor 2 - Garage



Max Dimensions: 26'8" x 31'6"
Calculated Area: 841 sq. ft
Included: No

Heated: No
Finished: No
Enclosed: Yes
Contiguous: Yes
Permitted: Yes
Wet space: No
Addition: No
Conversion: No

17 Floor 2 - Hall



Max Dimensions: 12'7" x 17'7"
Calculated Area: 221 sq. ft
Included: Yes

Heated: Yes
Finished: Yes
Enclosed: Yes
Contiguous: Yes
Permitted: Yes
Wet space: No
Addition: No
Conversion: No

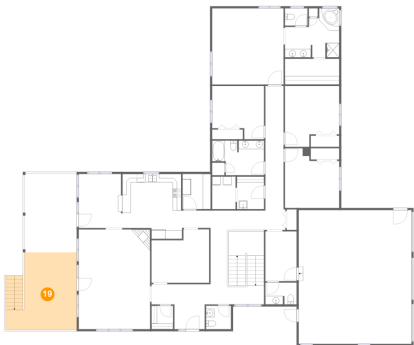
18 Floor 2 - Dining Room



Max Dimensions: 13'7" x 12'8"
Calculated Area: 152 sq. ft
Included: Yes

Heated: Yes
Finished: Yes
Enclosed: Yes
Contiguous: Yes
Permitted: Yes
Wet space: No
Addition: No
Conversion: No

19 Floor 2 - Deck



Max Dimensions: 16'9" x 18'3"
Calculated Area: 279 sq. ft
Included: No

Heated: No
Finished: Yes
Enclosed: No
Contiguous: Yes
Permitted: Yes
Wet space: No
Addition: No
Conversion: No

20 Floor 2 - Foyer



Max Dimensions: 13'11" x 28'0"
Calculated Area: 137 sq. ft
Included: Yes

Heated: Yes
Finished: Yes
Enclosed: Yes
Contiguous: Yes
Permitted: Yes
Wet space: No
Addition: No
Conversion: No

21 Floor 2 - Room



Max Dimensions: 7'4" x 11'9"
Calculated Area: 87 sq. ft
Included: Yes

Heated: Yes
Finished: Yes
Enclosed: Yes
Contiguous: Yes
Permitted: Yes
Wet space: No
Addition: No
Conversion: No

22 Floor 2 - Living Room



Max Dimensions: 16'10" x 23'6"
Calculated Area: 396 sq. ft
Included: Yes

Heated: Yes
Finished: Yes
Enclosed: Yes
Contiguous: Yes
Permitted: Yes
Wet space: No
Addition: No
Conversion: No

23 Floor 2 - Bedroom



Max Dimensions: 12'3" x 12'7"
Calculated Area: 134 sq. ft
Included: Yes

Heated: Yes
Finished: Yes
Enclosed: Yes
Contiguous: Yes
Permitted: Yes
Wet space: No
Addition: No
Conversion: No

5350 Northeast 96th Street, Kansas City, Clay County, Missouri,
United States, 64156

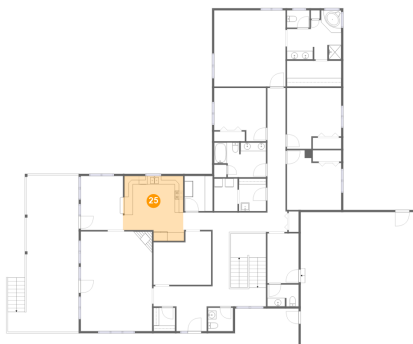
24 Floor 2 - Pantry



Max Dimensions: 6'8" x 8'4"
Calculated Area: 55 sq. ft
Included: Yes

Heated: Yes
Finished: Yes
Enclosed: Yes
Contiguous: Yes
Permitted: Yes
Wet space: No
Addition: No
Conversion: No

25 Floor 2 - Kitchen



Max Dimensions: 14'3" x 15'4"
Calculated Area: 198 sq. ft
Included: Yes

Heated: Yes
Finished: Yes
Enclosed: Yes
Contiguous: Yes
Permitted: Yes
Wet space: No
Addition: No
Conversion: No

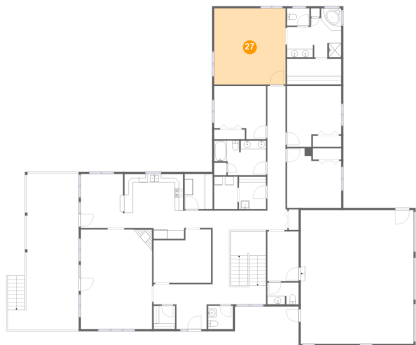
26 Floor 2 - WC



Max Dimensions: 5'4" x 4'1"
Calculated Area: 22 sq. ft
Included: Yes

Heated: Yes
Finished: Yes
Enclosed: Yes
Contiguous: Yes
Permitted: Yes
Wet space: Yes
Addition: No
Conversion: No

27 Floor 2 - Primary Bedroom



Max Dimensions: 16'10" x 18'0"
Calculated Area: 303 sq. ft
Included: Yes

Heated: Yes
Finished: Yes
Enclosed: Yes
Contiguous: Yes
Permitted: Yes
Wet space: No
Addition: No
Conversion: No

28 Floor 2 - WC



Max Dimensions: 7'4" x 5'2"
Calculated Area: 37 sq. ft
Included: Yes

Heated: Yes
Finished: Yes
Enclosed: Yes
Contiguous: Yes
Permitted: Yes
Wet space: Yes
Addition: No
Conversion: No

29 Floor 2 - WC

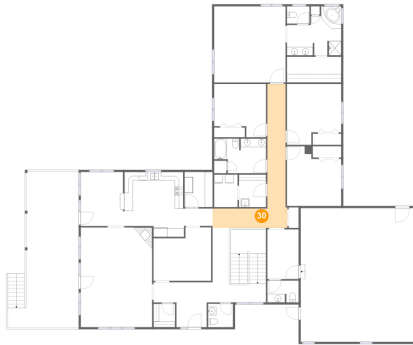


Max Dimensions: 5'10" x 5'6"
Calculated Area: 32 sq. ft
Included: Yes

Heated: Yes
Finished: Yes
Enclosed: Yes
Contiguous: Yes
Permitted: Yes
Wet space: Yes
Addition: No
Conversion: No

5350 Northeast 96th Street, Kansas City, Clay County, Missouri,
United States, 64156

30 Floor 2 - Hall



Max Dimensions: 17'8" x
34'0"
Calculated Area: 207 sq. ft
Included: Yes

Heated: Yes
Finished: Yes
Enclosed: Yes
Contiguous:
Yes
Permitted: Yes
Wet space: No
Addition: No
Conversion: No

31 Floor 2 - W.I.C.



Max Dimensions: 12'10" x
6'1"
Calculated Area: 78 sq. ft
Included: Yes

Heated: Yes
Finished: Yes
Enclosed: Yes
Contiguous:
Yes
Permitted: Yes
Wet space: No
Addition: No
Conversion: No

32 Floor 2 - Bath



Max Dimensions: 12'3" x
8'1"
Calculated Area: 88 sq. ft
Included: Yes

Heated: Yes
Finished: Yes
Enclosed: Yes
Contiguous:
Yes
Permitted: Yes
Wet space: Yes
Addition: No
Conversion: No

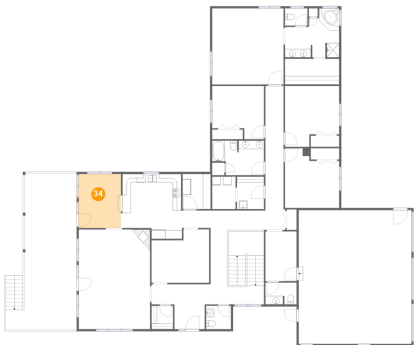
33 Floor 2 - Bedroom



Max Dimensions: 12'10" x 14'4"
Calculated Area: 163 sq. ft
Included: Yes

Heated: Yes
Finished: Yes
Enclosed: Yes
Contiguous: Yes
Permitted: Yes
Wet space: No
Addition: No
Conversion: No

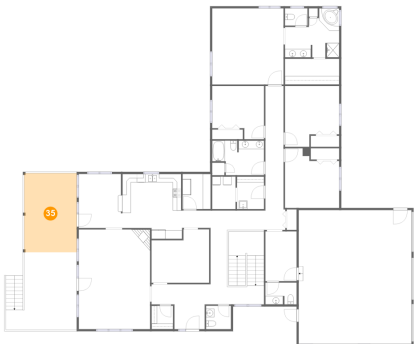
34 Floor 2 - Breakfast Nook



Max Dimensions: 9'11" x 12'9"
Calculated Area: 127 sq. ft
Included: Yes

Heated: Yes
Finished: Yes
Enclosed: Yes
Contiguous: Yes
Permitted: Yes
Wet space: No
Addition: No
Conversion: No

35 Floor 2 - Covered Deck



Max Dimensions: 12'5" x 18'8"
Calculated Area: 231 sq. ft
Included: No

Heated: No
Finished: Yes
Enclosed: No
Contiguous: Yes
Permitted: Yes
Wet space: No
Addition: No
Conversion: No