

146 Stonewall Drive, Daleville, Botetourt County, Virginia, United States, 24083



Property summary

 **1** Garages

 **5** Bedrooms

 **4** Bathrooms

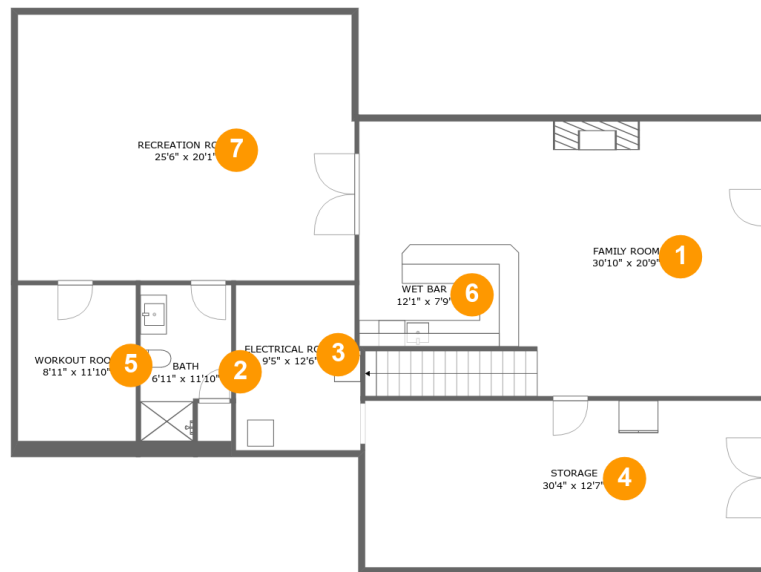
 **1** Half baths

 **3** Floors

 **5,009** Gross living area sqft

 **7,024** Total sqft

146 Stonewall Drive, Daleville, Botetourt County, Virginia, United States, 24083



Room dimensions

Floor 1

Total sqft: 1982 Living area: 1450

#		Dimensions	sqft	Counted as living area
1	Family Room	30'10" x 20'9"	541 sq. ft	Yes
2	Bath	6'11" x 11'10"	72 sq. ft	Yes
3	Electrical Room	9'5" x 12'6"	116 sq. ft	No
4	Storage	30'4" x 12'7"	383 sq. ft	No
5	Workout Room	8'11" x 11'10"	106 sq. ft	Yes
6	Wet Bar	12'1" x 7'9"	93 sq. ft	Yes
7	Recreation Room	25'6" x 20'1"	511 sq. ft	Yes

146 Stonewall Drive, Daleville, Botetourt County, Virginia, United States, 24083



Room dimensions

Floor 2

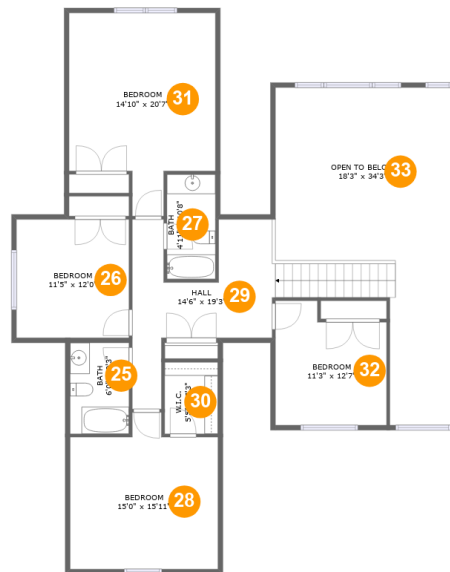
Total sqft: 3314 Living area: 2298

#		Dimensions	sqft	Counted as living area
8	Living Room	20'2" x 21'3"	411 sq. ft	Yes
9	Hall	6'1" x 13'11"	49 sq. ft	Yes
10	WC	10'2" x 4'4"	39 sq. ft	Yes
11	Foyer	6'8" x 12'11"	86 sq. ft	Yes
12	Garage	25'9" x 25'0"	617 sq. ft	No
13	Dining Room	11'9" x 12'7"	148 sq. ft	Yes
14	Primary Bedroom	17'10" x 21'2"	337 sq. ft	Yes
15	Porch	7'4" x 4'8"	34 sq. ft	No
16	Hall	5'2" x 3'5"	18 sq. ft	Yes
17	Patio	24'1" x 20'2"	331 sq. ft	No
18	Primary Bath	11'5" x 12'3"	110 sq. ft	Yes

**146 Stonewall Drive, Daleville, Botetourt County,
Virginia, United States, 24083**

#		Dimensions	sqft	Counted as living area
19	Office	11'3" x 12'7"	142 sq. ft	Yes
20	W.I.C.	7'7" x 16'8"	126 sq. ft	Yes
21	Laundry	10'2" x 7'6"	76 sq. ft	Yes
22	Sunroom	18'3" x 15'6"	275 sq. ft	Yes
23	Kitchen	12'1" x 21'3"	254 sq. ft	Yes
24	WC	3'2" x 6'9"	21 sq. ft	Yes

146 Stonewall Drive, Daleville, Botetourt County, Virginia, United States, 24083



Room dimensions

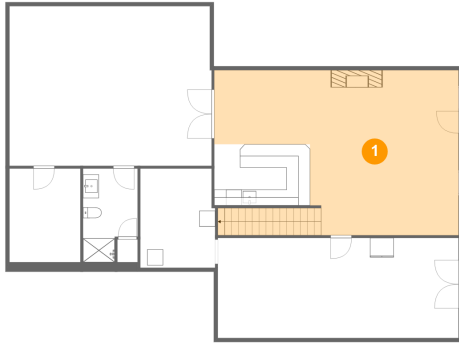
Floor 3

Total sqft: 1728 Living area: 1261

#		Dimensions	sqft	Counted as living area
25	Bath	6'0" x 9'3"	55 sq. ft	Yes
26	Bedroom	11'5" x 12'0"	137 sq. ft	Yes
27	Bath	4'11" x 10'8"	52 sq. ft	Yes
28	Bedroom	15'0" x 15'11"	208 sq. ft	Yes
29	Hall	14'6" x 19'3"	204 sq. ft	Yes
30	W.I.C.	5'5" x 7'3"	39 sq. ft	Yes
31	Bedroom	14'10" x 20'7"	253 sq. ft	Yes
32	Bedroom	11'3" x 12'7"	127 sq. ft	Yes
33	Open To Below	18'3" x 34'3"	430 sq. ft	No

146 Stonewall Drive, Daleville, Botetourt County, Virginia, United States, 24083

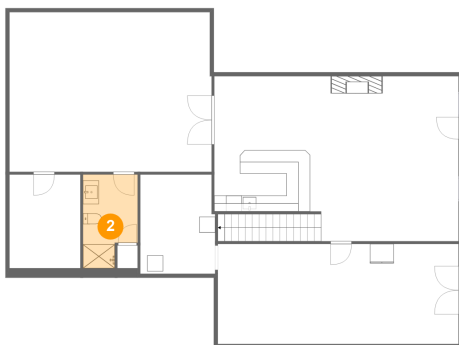
1 Floor 1 - Family Room



Dimensions: 30'10" x 20'9"
Area: 541 sq. ft
Counted as living area: Yes

Heated: Yes
Finished: Yes
Enclosed: Yes
Contiguous: Yes
Permitted: Yes
Wet space: No
Addition: No
Conversion: No

2 Floor 1 - Bath

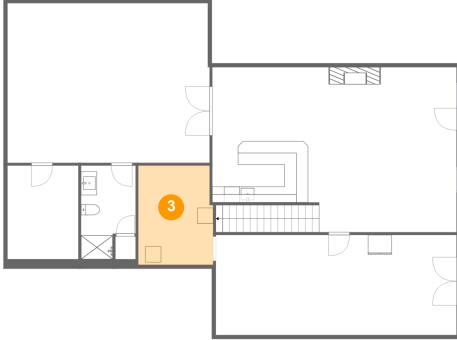


Dimensions: 6'11" x 11'10"
Area: 72 sq. ft
Counted as living area: Yes

Heated: Yes
Finished: Yes
Enclosed: Yes
Contiguous: Yes
Permitted: Yes
Wet space: Yes
Addition: No
Conversion: No

**146 Stonewall Drive, Daleville, Botetourt County,
Virginia, United States, 24083**

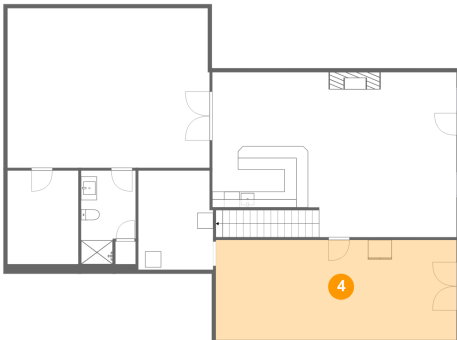
3 Floor 1 - Electrical Room



Dimensions: 9'5" x 12'6"
Area: 116 sq. ft
Counted as living area: No

Heated: No
Finished: No
Enclosed: Yes
Contiguous: Yes
Permitted: Yes
Wet space: No
Addition: No
Conversion: No

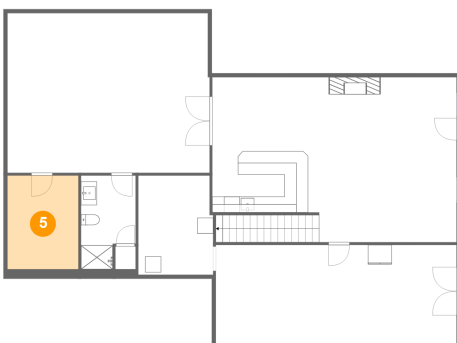
4 Floor 1 - Storage



Dimensions: 30'4" x 12'7"
Area: 383 sq. ft
Counted as living area: No

Heated: No
Finished: No
Enclosed: No
Contiguous: Yes
Permitted: Yes
Wet space: No
Addition: No
Conversion: No

5 Floor 1 - Workout Room

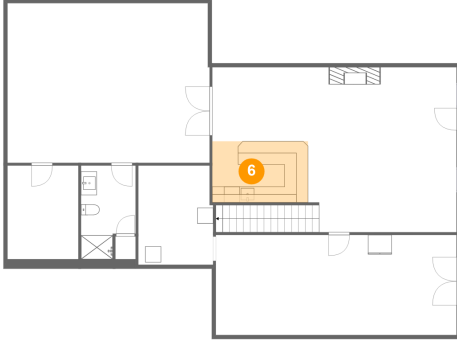


Dimensions: 8'11" x 11'10"
Area: 106 sq. ft
Counted as living area: Yes

Heated: Yes
Finished: Yes
Enclosed: Yes
Contiguous: Yes
Permitted: Yes
Wet space: No
Addition: No
Conversion: No

146 Stonewall Drive, Daleville, Botetourt County, Virginia, United States, 24083

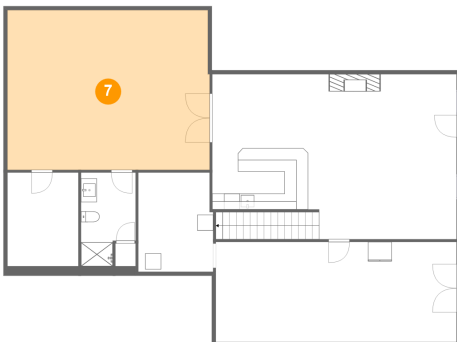
6 Floor 1 - Wet Bar



Dimensions: 12'1" x 7'9"
Area: 93 sq. ft
Counted as living area: Yes

Heated: Yes
Finished: Yes
Enclosed: Yes
Contiguous: Yes
Permitted: Yes
Wet space: No
Addition: No
Conversion: No

7 Floor 1 - Recreation Room



Dimensions: 25'6" x 20'1"
Area: 511 sq. ft
Counted as living area: Yes

Heated: Yes
Finished: Yes
Enclosed: Yes
Contiguous: Yes
Permitted: Yes
Wet space: No
Addition: No
Conversion: No

8 Floor 2 - Living Room



Dimensions: 20'2" x 21'3"
Area: 411 sq. ft
Counted as living area: Yes

Heated: Yes
Finished: Yes
Enclosed: Yes
Contiguous: Yes
Permitted: Yes
Wet space: No
Addition: No
Conversion: No

146 Stonewall Drive, Daleville, Botetourt County, Virginia, United States, 24083

9 Floor 2 - Hall



Dimensions: 6'1" x 13'11"
Area: 49 sq. ft
Counted as living area: Yes

Heated: Yes
Finished: Yes
Enclosed: Yes
Contiguous: Yes
Permitted: Yes
Wet space: No
Addition: No
Conversion: No

10 Floor 2 - WC



Dimensions: 10'2" x 4'4"
Area: 39 sq. ft
Counted as living area: Yes

Heated: Yes
Finished: Yes
Enclosed: Yes
Contiguous: Yes
Permitted: Yes
Wet space: Yes
Addition: No
Conversion: No

11 Floor 2 - Foyer



Dimensions: 6'8" x 12'11"
Area: 86 sq. ft
Counted as living area: Yes

Heated: Yes
Finished: Yes
Enclosed: Yes
Contiguous: Yes
Permitted: Yes
Wet space: No
Addition: No
Conversion: No

146 Stonewall Drive, Daleville, Botetourt County, Virginia, United States, 24083

12 Floor 2 - Garage



Dimensions: 25'9" x 25'0"
Area: 617 sq. ft
Counted as living area: No

Heated: No
Finished: No
Enclosed: Yes
Contiguous: Yes
Permitted: Yes
Wet space: No
Addition: No
Conversion: No

13 Floor 2 - Dining Room



Dimensions: 11'9" x 12'7"
Area: 148 sq. ft
Counted as living area: Yes

Heated: Yes
Finished: Yes
Enclosed: Yes
Contiguous: Yes
Permitted: Yes
Wet space: No
Addition: No
Conversion: No

14 Floor 2 - Primary Bedroom



Dimensions: 17'10" x 21'2"
Area: 337 sq. ft
Counted as living area: Yes

Heated: Yes
Finished: Yes
Enclosed: Yes
Contiguous: Yes
Permitted: Yes
Wet space: No
Addition: No
Conversion: No

146 Stonewall Drive, Daleville, Botetourt County, Virginia, United States, 24083

15 Floor 2 - Porch



Dimensions: 7'4" x 4'8"
Area: 34 sq. ft
Counted as living area: No

Heated: No
Finished: Yes
Enclosed: No
Contiguous: Yes
Permitted: Yes
Wet space: No
Addition: No
Conversion: No

16 Floor 2 - Hall



Dimensions: 5'2" x 3'5"
Area: 18 sq. ft
Counted as living area: Yes

Heated: Yes
Finished: Yes
Enclosed: Yes
Contiguous: Yes
Permitted: Yes
Wet space: No
Addition: No
Conversion: No

17 Floor 2 - Patio



Dimensions: 24'1" x 20'2"
Area: 331 sq. ft
Counted as living area: No

Heated: No
Finished: Yes
Enclosed: No
Contiguous: Yes
Permitted: Yes
Wet space: No
Addition: No
Conversion: No

146 Stonewall Drive, Daleville, Botetourt County, Virginia, United States, 24083

18 Floor 2 - Primary Bath



Dimensions: 11'5" x 12'3"
Area: 110 sq. ft
Counted as living area: Yes

Heated: Yes
Finished: Yes
Enclosed: Yes
Contiguous: Yes
Permitted: Yes
Wet space: Yes
Addition: No
Conversion: No

19 Floor 2 - Office



Dimensions: 11'3" x 12'7"
Area: 142 sq. ft
Counted as living area: Yes

Heated: Yes
Finished: Yes
Enclosed: Yes
Contiguous: Yes
Permitted: Yes
Wet space: No
Addition: No
Conversion: No

20 Floor 2 - W.I.C.



Dimensions: 7'7" x 16'8"
Area: 126 sq. ft
Counted as living area: Yes

Heated: Yes
Finished: Yes
Enclosed: Yes
Contiguous: Yes
Permitted: Yes
Wet space: No
Addition: No
Conversion: No

146 Stonewall Drive, Daleville, Botetourt County, Virginia, United States, 24083

21 Floor 2 - Laundry



Dimensions: 10'2" x 7'6"
Area: 76 sq. ft
Counted as living area: Yes

Heated: Yes
Finished: Yes
Enclosed: Yes
Contiguous: Yes
Permitted: Yes
Wet space: No
Addition: No
Conversion: No

22 Floor 2 - Sunroom



Dimensions: 18'3" x 15'6"
Area: 275 sq. ft
Counted as living area: Yes

Heated: Yes
Finished: Yes
Enclosed: Yes
Contiguous: Yes
Permitted: Yes
Wet space: No
Addition: No
Conversion: No

23 Floor 2 - Kitchen



Dimensions: 12'1" x 21'3"
Area: 254 sq. ft
Counted as living area: Yes

Heated: Yes
Finished: Yes
Enclosed: Yes
Contiguous: Yes
Permitted: Yes
Wet space: No
Addition: No
Conversion: No

146 Stonewall Drive, Daleville, Botetourt County, Virginia, United States, 24083

24 Floor 2 - WC



Dimensions: 3'2" x 6'9"
Area: 21 sq. ft
Counted as living area: Yes

Heated: Yes
Finished: Yes
Enclosed: Yes
Contiguous: Yes
Permitted: Yes
Wet space: Yes
Addition: No
Conversion: No

25 Floor 3 - Bath



Dimensions: 6'0" x 9'3"
Area: 55 sq. ft
Counted as living area: Yes

Heated: Yes
Finished: Yes
Enclosed: Yes
Contiguous: Yes
Permitted: Yes
Wet space: Yes
Addition: No
Conversion: No

26 Floor 3 - Bedroom



Dimensions: 11'5" x 12'0"
Area: 137 sq. ft
Counted as living area: Yes

Heated: Yes
Finished: Yes
Enclosed: Yes
Contiguous: Yes
Permitted: Yes
Wet space: No
Addition: No
Conversion: No

146 Stonewall Drive, Daleville, Botetourt County, Virginia, United States, 24083

27 Floor 3 - Bath



Dimensions: 4'11" x 10'8"
Area: 52 sq. ft
Counted as living area: Yes

Heated: Yes
Finished: Yes
Enclosed: Yes
Contiguous: Yes
Permitted: Yes
Wet space: Yes
Addition: No
Conversion: No

28 Floor 3 - Bedroom



Dimensions: 15'0" x 15'11"
Area: 208 sq. ft
Counted as living area: Yes

Heated: Yes
Finished: Yes
Enclosed: Yes
Contiguous: Yes
Permitted: Yes
Wet space: No
Addition: No
Conversion: No

29 Floor 3 - Hall



Dimensions: 14'6" x 19'3"
Area: 204 sq. ft
Counted as living area: Yes

Heated: Yes
Finished: Yes
Enclosed: Yes
Contiguous: Yes
Permitted: Yes
Wet space: No
Addition: No
Conversion: No

146 Stonewall Drive, Daleville, Botetourt County, Virginia, United States, 24083

30 Floor 3 - W.I.C.



Dimensions: 5'5" x 7'3"
Area: 39 sq. ft
Counted as living area: Yes

Heated: Yes
Finished: Yes
Enclosed: Yes
Contiguous: Yes
Permitted: Yes
Wet space: No
Addition: No
Conversion: No

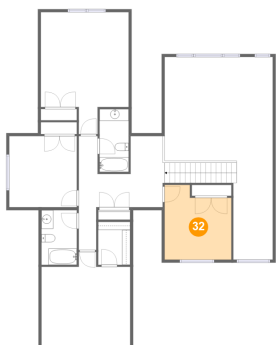
31 Floor 3 - Bedroom



Dimensions: 14'10" x 20'7"
Area: 253 sq. ft
Counted as living area: Yes

Heated: Yes
Finished: Yes
Enclosed: Yes
Contiguous: Yes
Permitted: Yes
Wet space: No
Addition: No
Conversion: No

32 Floor 3 - Bedroom



Dimensions: 11'3" x 12'7"
Area: 127 sq. ft
Counted as living area: Yes

Heated: Yes
Finished: Yes
Enclosed: Yes
Contiguous: Yes
Permitted: Yes
Wet space: No
Addition: No
Conversion: No

**146 Stonewall Drive, Daleville, Botetourt County,
Virginia, United States, 24083**

33 Floor 3 - Open To Below



Dimensions: 18'3" x 34'3"
Area: 430 sq. ft
Counted as living area: No

Heated: No
Finished: No
Enclosed: No
Contiguous: Yes
Permitted: No
Wet space: No
Addition: No
Conversion: No