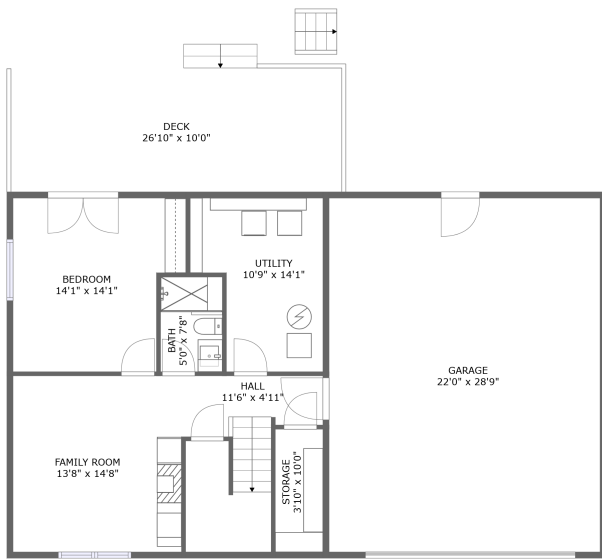
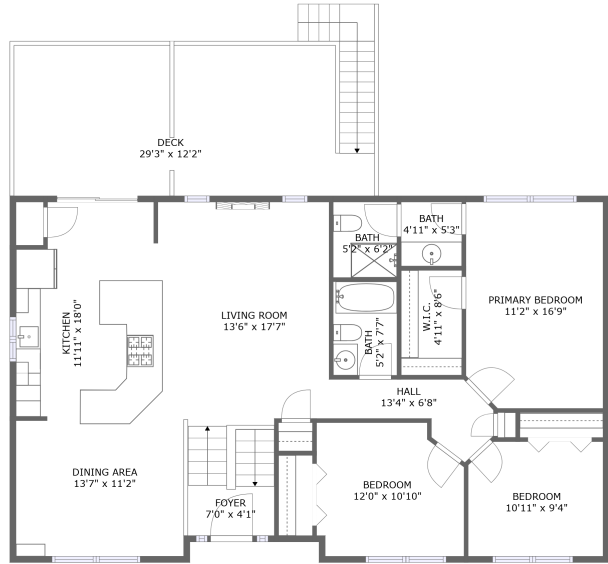


# 404 Benedict Drive Southwest, Candlewick Lake, Poplar Grove, Boone County, Illinois,



FLOOR 1




FLOOR 2

## Property Summary


 **1** garages

 **4** bedrooms

 **3** bathrooms

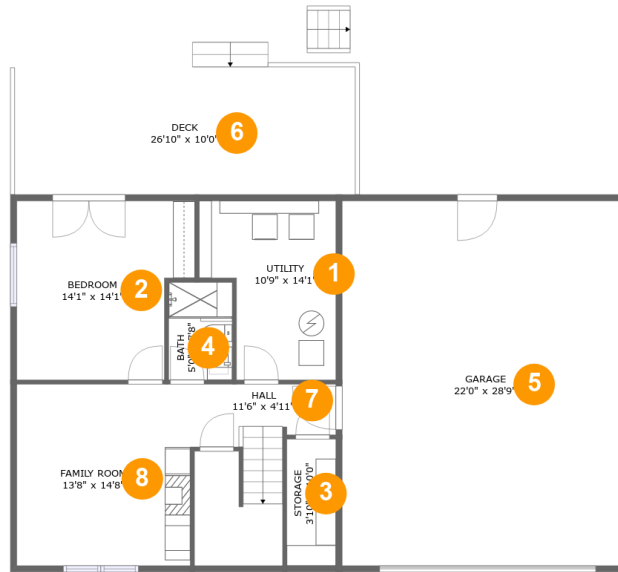
 **0** half baths

 **2** floors

 **2,164** Gross Living Area sqft

 **3,479** total sqft

# 404 Benedict Drive Southwest, Candlewick Lake, Poplar Grove, Boone County, Illinois,



## Room Dimensions

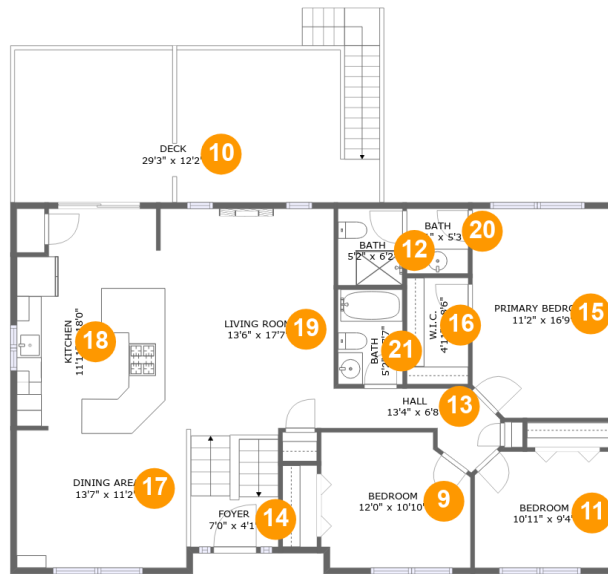
Floor 1

Total sqft: 1718

Living area: 733

#	Room name	Dimensions	Area (sqft)	Counted as Living Area
1	Utility	10'9" x 14'1"	128 sq. ft	Yes
2	Bedroom	14'1" x 14'1"	179 sq. ft	Yes
3	Storage	3'10" x 10'0"	39 sq. ft	No
4	Bath	5'0" x 7'8"	39 sq. ft	Yes
5	Garage	22'0" x 28'9"	633 sq. ft	No
6	Deck	26'10" x 10'0"	270 sq. ft	No
7	Hall	11'6" x 4'11"	115 sq. ft	Yes
8	Family Room	13'8" x 14'8"	196 sq. ft	Yes

# 404 Benedict Drive Southwest, Candlewick Lake, Poplar Grove, Boone County, Illinois,



## Room Dimensions

Floor 2

Total sqft: 1761

Living area: 1431

#	Room name	Dimensions	Area (sqft)	Counted as Living Area
9	Bedroom	12'0" x 10'10"	121 sq. ft	Yes
10	Deck	29'3" x 12'2"	330 sq. ft	No
11	Bedroom	10'11" x 9'4"	100 sq. ft	Yes
12	Bath	5'2" x 6'2"	32 sq. ft	Yes
13	Hall	13'4" x 6'8"	52 sq. ft	Yes
14	Foyer	7'0" x 4'1"	30 sq. ft	Yes
15	Primary Bedroom	11'2" x 16'9"	183 sq. ft	Yes
16	W.i.c.	4'11" x 8'6"	42 sq. ft	Yes
17	Dining Area	13'7" x 11'2"	190 sq. ft	Yes
18	Kitchen	11'11" x 18'0"	195 sq. ft	Yes
19	Living Room	13'6" x 17'7"	243 sq. ft	Yes

**404 Benedict Drive Southwest, Candlewick  
Lake, Poplar Grove, Boone County, Illinois,**

#	Room name	Dimensions	Area (sqft)	Counted as Living Area
20	Bath	4'11" x 5'3"	26 sq. ft	Yes
21	Bath	5'2" x 7'7"	39 sq. ft	Yes

# 404 Benedict Drive Southwest, Candlewick Lake, Poplar Grove, Boone County, Illinois,

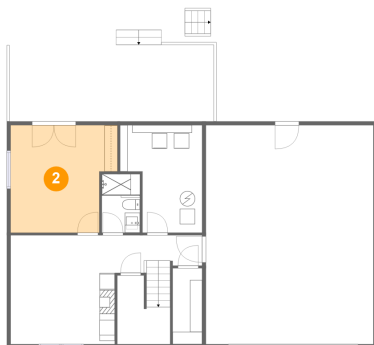
## 1 Floor 1 - Utility



Dimensions: 10'9" x 14'1"  
Area: 128 sq. ft  
Counted as Living Area:  
Yes

Heated: Yes  
Finished: Yes  
Enclosed: Yes  
Contiguous:  
Yes  
Permitted: Yes  
Wet Space: No  
Addition: No  
Conversion: No

## 2 Floor 1 - Bedroom



Dimensions: 14'1" x 14'1"  
Area: 179 sq. ft  
Counted as Living Area:  
Yes

Heated: Yes  
Finished: Yes  
Enclosed: Yes  
Contiguous:  
Yes  
Permitted: Yes  
Wet Space: No  
Addition: No  
Conversion: No

# 404 Benedict Drive Southwest, Candlewick Lake, Poplar Grove, Boone County, Illinois,

## 3 Floor 1 - Storage



Dimensions: 3'10" x 10'0"  
Area: 39 sq. ft  
Counted as Living Area: No

Heated: No  
Finished: No  
Enclosed: No  
Contiguous: Yes  
Permitted: Yes  
Wet Space: No  
Addition: No  
Conversion: No

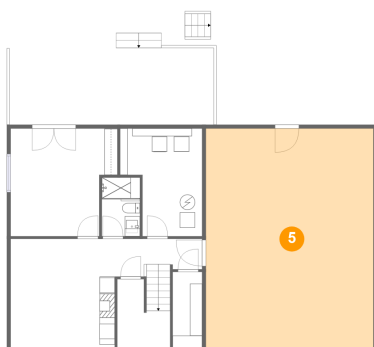
## 4 Floor 1 - Bath



Dimensions: 5'0" x 7'8"  
Area: 39 sq. ft  
Counted as Living Area: Yes

Heated: Yes  
Finished: Yes  
Enclosed: Yes  
Contiguous: Yes  
Permitted: Yes  
Wet Space: Yes  
Addition: No  
Conversion: No

## 5 Floor 1 - Garage



Dimensions: 22'0" x 28'9"  
Area: 633 sq. ft  
Counted as Living Area: No

Heated: No  
Finished: No  
Enclosed: Yes  
Contiguous: Yes  
Permitted: Yes  
Wet Space: No  
Addition: No  
Conversion: No

# 404 Benedict Drive Southwest, Candlewick Lake, Poplar Grove, Boone County, Illinois,

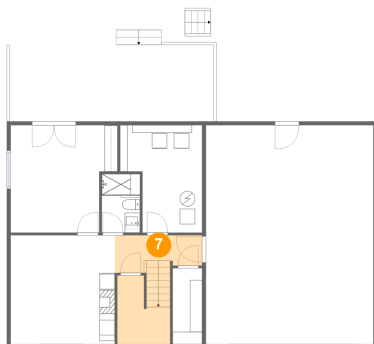
## 6 Floor 1 - Deck



Dimensions: 26'10" x 10'0"  
Area: 270 sq. ft  
Counted as Living Area: No

Heated: No  
Finished: Yes  
Enclosed: No  
Contiguous: Yes  
Permitted: Yes  
Wet Space: No  
Addition: No  
Conversion: No

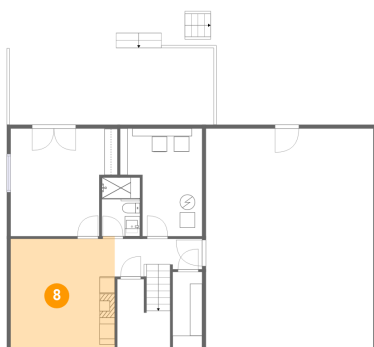
## 7 Floor 1 - Hall



Dimensions: 11'6" x 4'11"  
Area: 115 sq. ft  
Counted as Living Area: Yes

Heated: Yes  
Finished: Yes  
Enclosed: Yes  
Contiguous: Yes  
Permitted: Yes  
Wet Space: No  
Addition: No  
Conversion: No

## 8 Floor 1 - Family Room



Dimensions: 13'8" x 14'8"  
Area: 196 sq. ft  
Counted as Living Area: Yes

Heated: Yes  
Finished: Yes  
Enclosed: Yes  
Contiguous: Yes  
Permitted: Yes  
Wet Space: No  
Addition: No  
Conversion: No

# 404 Benedict Drive Southwest, Candlewick Lake, Poplar Grove, Boone County, Illinois,

## 9 Floor 2 - Bedroom



Dimensions: 12'0" x 10'10"  
Area: 121 sq. ft  
Counted as Living Area:  
Yes

Heated: Yes  
Finished: Yes  
Enclosed: Yes  
Contiguous:  
Yes  
Permitted: Yes  
Wet Space: No  
Addition: No  
Conversion: No

## 10 Floor 2 - Deck



Dimensions: 29'3" x 12'2"  
Area: 330 sq. ft  
Counted as Living Area: No

Heated: No  
Finished: Yes  
Enclosed: No  
Contiguous: Yes  
Permitted: Yes  
Wet Space: No  
Addition: No  
Conversion: No

## 11 Floor 2 - Bedroom



Dimensions: 10'11" x 9'4"  
Area: 100 sq. ft  
Counted as Living Area:  
Yes

Heated: Yes  
Finished: Yes  
Enclosed: Yes  
Contiguous:  
Yes  
Permitted: Yes  
Wet Space: No  
Addition: No  
Conversion: No



# 404 Benedict Drive Southwest, Candlewick Lake, Poplar Grove, Boone County, Illinois,

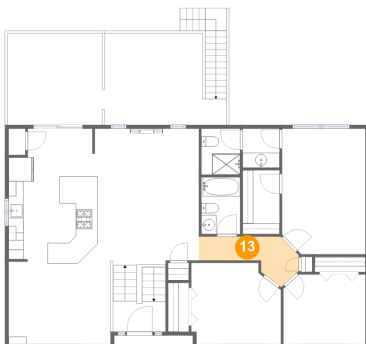
## 12 Floor 2 - Bath



Dimensions: 5'2" x 6'2"  
Area: 32 sq. ft  
Counted as Living Area:  
Yes

Heated: Yes  
Finished: Yes  
Enclosed: Yes  
Contiguous:  
Yes  
Permitted: Yes  
Wet Space: Yes  
Addition: No  
Conversion: No

## 13 Floor 2 - Hall



Dimensions: 13'4" x 6'8"  
Area: 52 sq. ft  
Counted as Living Area:  
Yes

Heated: Yes  
Finished: Yes  
Enclosed: Yes  
Contiguous:  
Yes  
Permitted: Yes  
Wet Space: No  
Addition: No  
Conversion: No

## 14 Floor 2 - Foyer



Dimensions: 7'0" x 4'1"  
Area: 30 sq. ft  
Counted as Living Area:  
Yes

Heated: Yes  
Finished: Yes  
Enclosed: Yes  
Contiguous:  
Yes  
Permitted: Yes  
Wet Space: No  
Addition: No  
Conversion: No

# 404 Benedict Drive Southwest, Candlewick Lake, Poplar Grove, Boone County, Illinois,

## 15 Floor 2 - Primary Bedroom



Dimensions: 11'2" x 16'9"  
Area: 183 sq. ft  
Counted as Living Area:  
Yes

Heated: Yes  
Finished: Yes  
Enclosed: Yes  
Contiguous:  
Yes  
Permitted: Yes  
Wet Space: No  
Addition: No  
Conversion: No

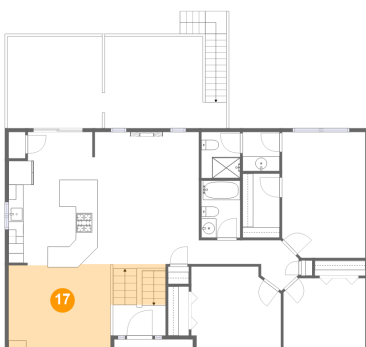
## 16 Floor 2 - W.i.c.



Dimensions: 4'11" x 8'6"  
Area: 42 sq. ft  
Counted as Living Area:  
Yes

Heated: Yes  
Finished: Yes  
Enclosed: Yes  
Contiguous:  
Yes  
Permitted: Yes  
Wet Space: No  
Addition: No  
Conversion: No

## 17 Floor 2 - Dining Area



Dimensions: 13'7" x 11'2"  
Area: 190 sq. ft  
Counted as Living Area:  
Yes

Heated: Yes  
Finished: Yes  
Enclosed: Yes  
Contiguous:  
Yes  
Permitted: Yes  
Wet Space: No  
Addition: No  
Conversion: No

# 404 Benedict Drive Southwest, Candlewick Lake, Poplar Grove, Boone County, Illinois,

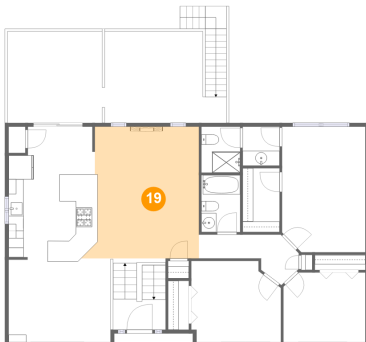
## 18 Floor 2 - Kitchen



Dimensions: 11'11" x 18'0"  
Area: 195 sq. ft  
Counted as Living Area:  
Yes

Heated: Yes  
Finished: Yes  
Enclosed: Yes  
Contiguous:  
Yes  
Permitted: Yes  
Wet Space: No  
Addition: No  
Conversion: No

## 19 Floor 2 - Living Room



Dimensions: 13'6" x 17'7"  
Area: 243 sq. ft  
Counted as Living Area:  
Yes

Heated: Yes  
Finished: Yes  
Enclosed: Yes  
Contiguous:  
Yes  
Permitted: Yes  
Wet Space: No  
Addition: No  
Conversion: No

## 20 Floor 2 - Bath



Dimensions: 4'11" x 5'3"  
Area: 26 sq. ft  
Counted as Living Area:  
Yes

Heated: Yes  
Finished: Yes  
Enclosed: Yes  
Contiguous:  
Yes  
Permitted: Yes  
Wet Space: Yes  
Addition: No  
Conversion: No

# 404 Benedict Drive Southwest, Candlewick Lake, Poplar Grove, Boone County, Illinois,

## 21 Floor 2 - Bath



Dimensions: 5'2" x 7'7"  
Area: 39 sq. ft  
Counted as Living Area:  
Yes

Heated: Yes  
Finished: Yes  
Enclosed: Yes  
Contiguous:  
Yes  
Permitted: Yes  
Wet Space: Yes  
Addition: No  
Conversion: No