

1405-3071 Glen Drive

Port Coquitlam BC V3B 7R1

Total Area 712 SQ.FT.

Balcony Area: 60 SQ.FT.

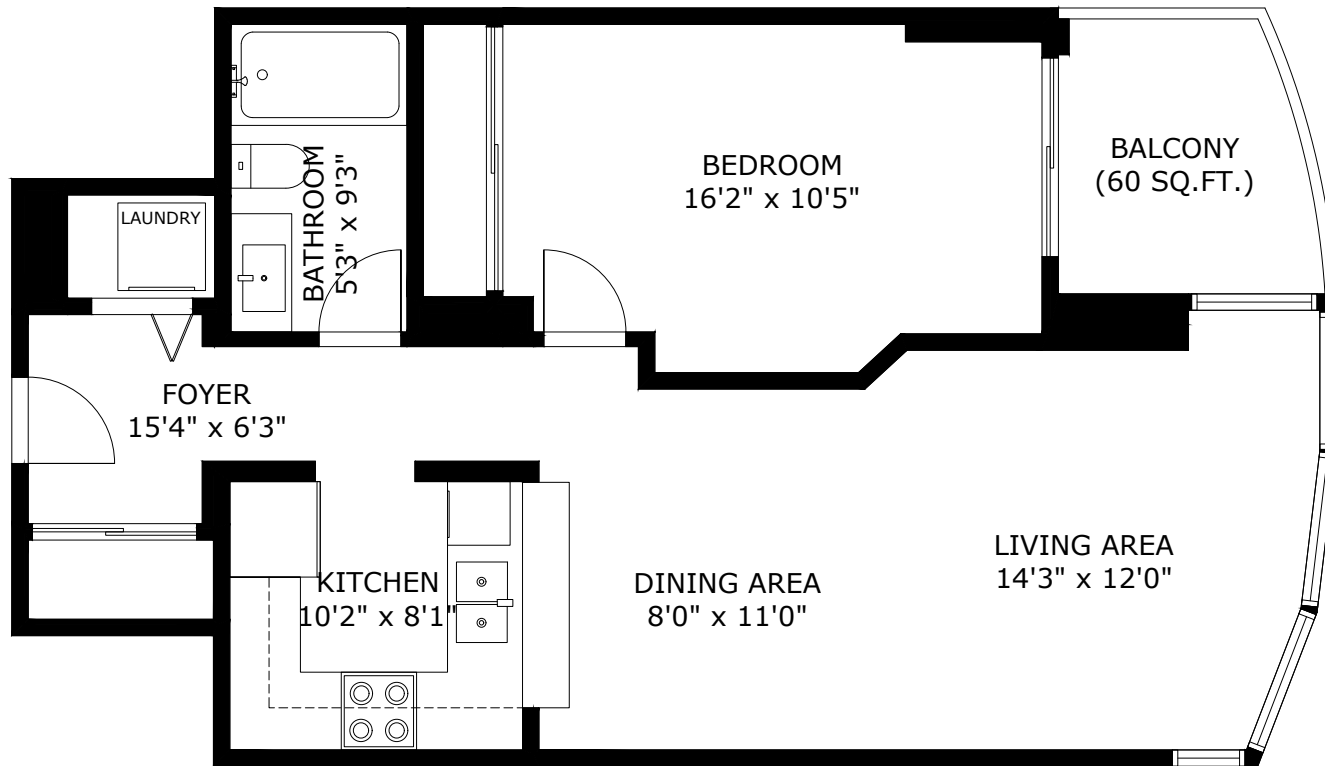
Ceiling Height: 8'2"



1
BEDROOMS

1
BATHROOMS

712
TOTAL SQ.FT.



1405-3071 GLEN DR COQUITLAM BC V3B 7R1

Measurements are approximate and may not be to scale. Gross measurements provided by agent.
The floor plan illustration is not suitable for construction/architectural purposes.
This communication is not intended to cause or induce breach of an existing agency agreement