

Home report

6530 Trevilian Road, Meadewood, Hollins, Roanoke, Roanoke County, Virginia, United States, 24019



Total GLA: 2667 sq. ft

Below Ground: 912 sq. ft, Floor 2: 1583 sq. ft, Floor 3: 1084 sq. ft
Excluded: Patio 474 sq. ft, Storage 449 sq. ft, Utility 36 sq. ft, Garage 598 sq. ft, Deck 440 sq. ft, Porch 27 sq. ft, Fireplace 13 sq. ft, Open to below 270 sq. ft

Property summary



3

Floors



5

Bedrooms



4

Bathrooms

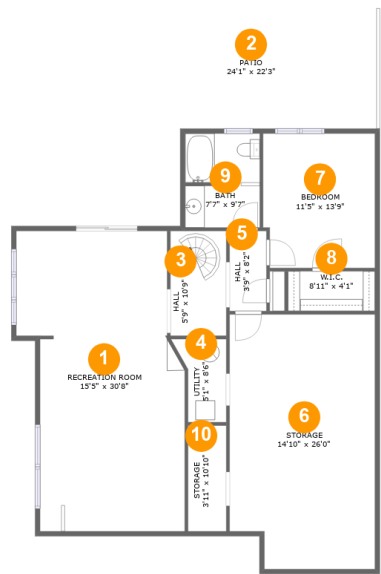


1

Garages

Home report

6530 Trevilian Road, Meadowood, Hollins, Roanoke, Roanoke County, Virginia, United States, 24019



Room dimensions

Floor 1 Below ground

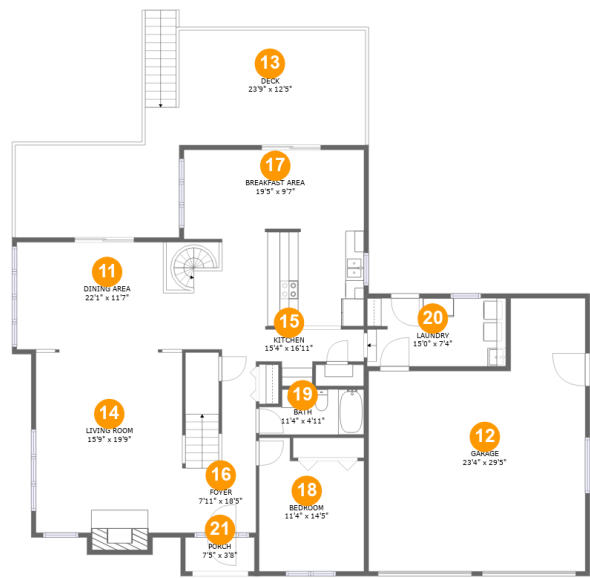
Total:912sqft

Excluded: 959sqft

#		Max Dimensions	sqft	Included
1	Recreation Room	15'5" x 30'8"	457 sq. ft	Yes
2	Patio	24'1" x 22'3"	474 sq. ft	No
3	Hall	5'9" x 10'9"	61 sq. ft	Yes
4	Utility	5'1" x 8'6"	36 sq. ft	No
5	Hall	3'9" x 8'2"	31 sq. ft	Yes
6	Storage	14'10" x 26'0"	374 sq. ft	No
7	Bedroom	11'5" x 13'9"	155 sq. ft	Yes
8	W.I.C.	8'11" x 4'1"	36 sq. ft	Yes
9	Bath	7'7" x 9'7"	72 sq. ft	Yes
10	Storage	3'11" x 10'10"	42 sq. ft	No

Home report

6530 Trevilian Road, Meadewood, Hollins, Roanoke, Roanoke County, Virginia, United States, 24019



Room dimensions

Floor 2

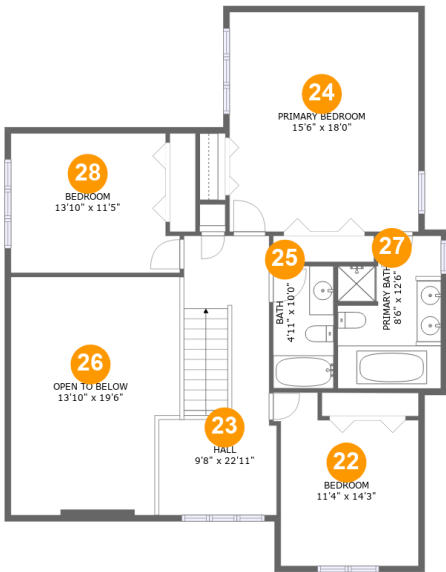
Total:1583sqft

Excluded: 1078sqft

#		Max Dimensions	sqft	Included
11	Dining Area	22'1" x 11'7"	255 sq. ft	Yes
12	Garage	23'4" x 29'5"	567 sq. ft	No
13	Deck	23'9" x 12'5"	440 sq. ft	No
14	Living Room	15'9" x 19'9"	323 sq. ft	Yes
15	Kitchen	15'4" x 16'11"	225 sq. ft	Yes
16	Foyer	7'11" x 18'5"	152 sq. ft	Yes
17	Breakfast Area	19'5" x 9'7"	170 sq. ft	Yes
18	Bedroom	11'4" x 14'5"	143 sq. ft	Yes
19	Bath	11'4" x 4'11"	51 sq. ft	Yes
20	Laundry	15'0" x 7'4"	109 sq. ft	Yes
21	Porch	7'5" x 3'8"	27 sq. ft	No

Home report

6530 Trevilian Road, Meadewood, Hollins, Roanoke, Roanoke County, Virginia, United States, 24019



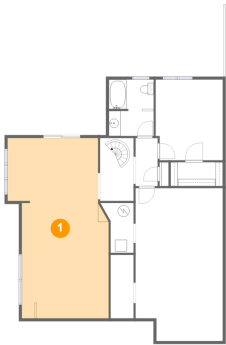
Room dimensions

Floor 3 Total:1084sqft Excluded: 270sqft

#		Max Dimensions	sqft	Included
22	Bedroom	11'4" x 14'3"	144 sq. ft	Yes
23	Hall	9'8" x 22'11"	188 sq. ft	Yes
24	Primary Bedroom	15'6" x 18'0"	280 sq. ft	Yes
25	Bath	4'11" x 10'0"	50 sq. ft	Yes
26	Open To Below	13'10" x 19'6"	254 sq. ft	No
27	Primary Bath	8'6" x 12'6"	97 sq. ft	Yes
28	Bedroom	13'10" x 11'5"	149 sq. ft	Yes

6530 Trevilian Road, Meadewood, Hollins, Roanoke, Roanoke County, Virginia, United States, 24019

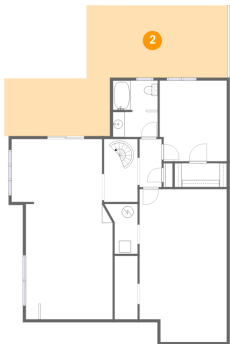
1 Floor 1 - Recreation Room



Max Dimensions: 15'5" x 30'8"
Calculated Area: 457 sq. ft
Included: Yes

Heated: Yes
Finished: Yes
Enclosed: Yes
Contiguous: Yes
Permitted: Yes
Wet space: No
Addition: No
Conversion: No

2 Floor 1 - Patio

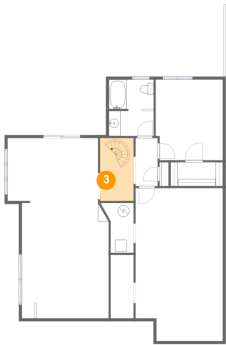


Max Dimensions: 24'1" x 22'3"
Calculated Area: 474 sq. ft
Included: No

Heated: No
Finished: Yes
Enclosed: No
Contiguous: Yes
Permitted: Yes
Wet space: No
Addition: No
Conversion: No

6530 Trevilian Road, Meadewood, Hollins, Roanoke, Roanoke County, Virginia, United States, 24019

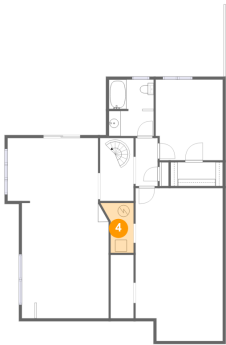
3 Floor 1 - Hall



Max Dimensions: 5'9" x 10'9"
Calculated Area: 61 sq. ft
Included: Yes

Heated: Yes
Finished: Yes
Enclosed: Yes
Contiguous: Yes
Permitted: Yes
Wet space: No
Addition: No
Conversion: No

4 Floor 1 - Utility



Max Dimensions: 5'1" x 8'6"
Calculated Area: 36 sq. ft
Included: No

Heated: Yes
Finished: Yes
Enclosed: Yes
Contiguous: No
Permitted: Yes
Wet space: No
Addition: No
Conversion: No

5 Floor 1 - Hall

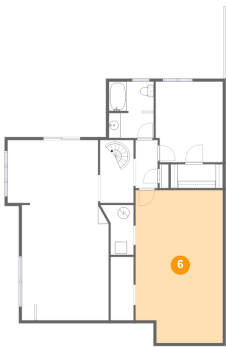


Max Dimensions: 3'9" x 8'2"
Calculated Area: 31 sq. ft
Included: Yes

Heated: Yes
Finished: Yes
Enclosed: Yes
Contiguous: Yes
Permitted: Yes
Wet space: No
Addition: No
Conversion: No

6530 Trevilian Road, Meadewood, Hollins, Roanoke, Roanoke County, Virginia, United States, 24019

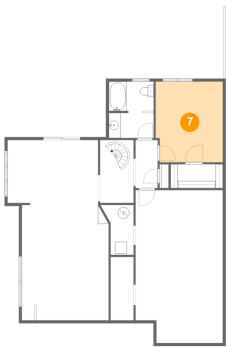
6 Floor 1 - Storage



Max Dimensions: 14'10" x 26'0"
Calculated Area: 374 sq. ft
Included: No

Heated: No
Finished: No
Enclosed: No
Contiguous: Yes
Permitted: Yes
Wet space: No
Addition: No
Conversion: No

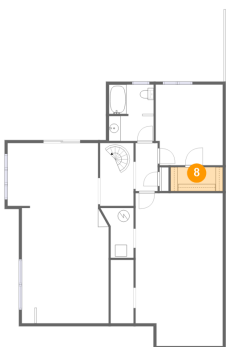
7 Floor 1 - Bedroom



Max Dimensions: 11'5" x 13'9"
Calculated Area: 155 sq. ft
Included: Yes

Heated: Yes
Finished: Yes
Enclosed: Yes
Contiguous: Yes
Permitted: Yes
Wet space: No
Addition: No
Conversion: No

8 Floor 1 - W.I.C.

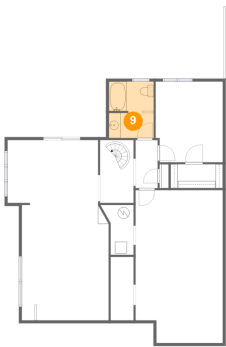


Max Dimensions: 8'11" x 4'1"
Calculated Area: 36 sq. ft
Included: Yes

Heated: Yes
Finished: Yes
Enclosed: Yes
Contiguous: Yes
Permitted: Yes
Wet space: No
Addition: No
Conversion: No

6530 Trevilian Road, Meadewood, Hollins, Roanoke, Roanoke County, Virginia, United States, 24019

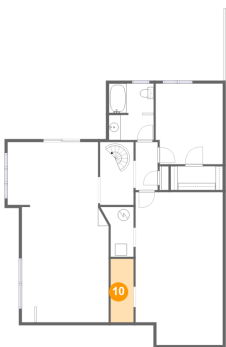
9 Floor 1 - Bath



Max Dimensions: 7'7" x 9'7"
Calculated Area: 72 sq. ft
Included: Yes

Heated: Yes
Finished: Yes
Enclosed: Yes
Contiguous: Yes
Permitted: Yes
Wet space: Yes
Addition: No
Conversion: No

10 Floor 1 - Storage



Max Dimensions: 3'11" x 10'10"
Calculated Area: 42 sq. ft
Included: No

Heated: No
Finished: No
Enclosed: No
Contiguous: Yes
Permitted: Yes
Wet space: No
Addition: No
Conversion: No

11 Floor 2 - Dining Area

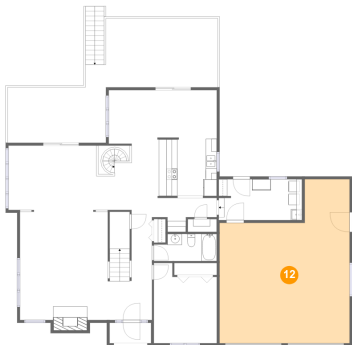


Max Dimensions: 22'1" x 11'7"
Calculated Area: 255 sq. ft
Included: Yes

Heated: Yes
Finished: Yes
Enclosed: Yes
Contiguous: Yes
Permitted: Yes
Wet space: No
Addition: No
Conversion: No

6530 Trevilian Road, Meadewood, Hollins, Roanoke, Roanoke County, Virginia, United States, 24019

12 Floor 2 - Garage



Max Dimensions: 23'4" x 29'5"
Calculated Area: 567 sq. ft
Included: No

Heated: No
Finished: No
Enclosed: Yes
Contiguous: Yes
Permitted: Yes
Wet space: No
Addition: No
Conversion: No

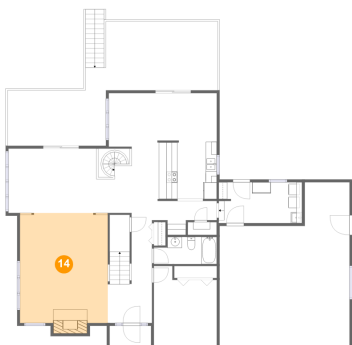
13 Floor 2 - Deck



Max Dimensions: 23'9" x 12'5"
Calculated Area: 440 sq. ft
Included: No

Heated: No
Finished: Yes
Enclosed: No
Contiguous: Yes
Permitted: Yes
Wet space: No
Addition: No
Conversion: No

14 Floor 2 - Living Room



Max Dimensions: 15'9" x 19'9"
Calculated Area: 323 sq. ft
Included: Yes

Heated: Yes
Finished: Yes
Enclosed: Yes
Contiguous: Yes
Permitted: Yes
Wet space: No
Addition: No
Conversion: No

6530 Trevilian Road, Meadewood, Hollins, Roanoke, Roanoke
County, Virginia, United States, 24019

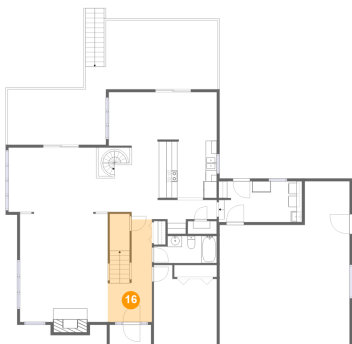
15 Floor 2 - Kitchen



Max Dimensions: 15'4" x 16'11"
Calculated Area: 225 sq. ft
Included: Yes

Heated: Yes
Finished: Yes
Enclosed: Yes
Contiguous: Yes
Permitted: Yes
Wet space: No
Addition: No
Conversion: No

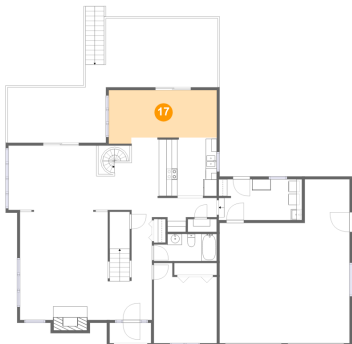
16 Floor 2 - Foyer



Max Dimensions: 7'11" x 18'5"
Calculated Area: 152 sq. ft
Included: Yes

Heated: Yes
Finished: Yes
Enclosed: Yes
Contiguous: Yes
Permitted: Yes
Wet space: No
Addition: No
Conversion: No

17 Floor 2 - Breakfast Area

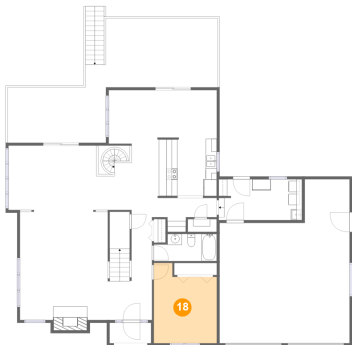


Max Dimensions: 19'5" x 9'7"
Calculated Area: 170 sq. ft
Included: Yes

Heated: Yes
Finished: Yes
Enclosed: Yes
Contiguous: Yes
Permitted: Yes
Wet space: No
Addition: No
Conversion: No

6530 Trevilian Road, Meadewood, Hollins, Roanoke, Roanoke County, Virginia, United States, 24019

18 Floor 2 - Bedroom



Max Dimensions: 11'4" x 14'5"
Calculated Area: 143 sq. ft
Included: Yes

Heated: Yes
Finished: Yes
Enclosed: Yes
Contiguous: Yes
Permitted: Yes
Wet space: No
Addition: No
Conversion: No

19 Floor 2 - Bath



Max Dimensions: 11'4" x 4'11"
Calculated Area: 51 sq. ft
Included: Yes

Heated: Yes
Finished: Yes
Enclosed: Yes
Contiguous: Yes
Permitted: Yes
Wet space: Yes
Addition: No
Conversion: No

20 Floor 2 - Laundry

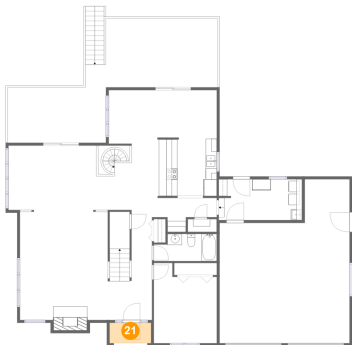


Max Dimensions: 15'0" x 7'4"
Calculated Area: 109 sq. ft
Included: Yes

Heated: Yes
Finished: Yes
Enclosed: Yes
Contiguous: Yes
Permitted: Yes
Wet space: No
Addition: No
Conversion: No

6530 Trevilian Road, Meadewood, Hollins, Roanoke, Roanoke County, Virginia, United States, 24019

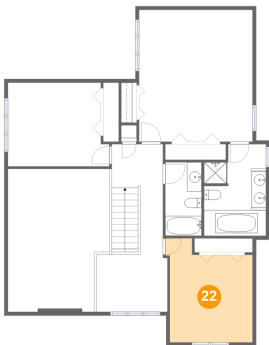
21 Floor 2 - Porch



Max Dimensions: 7'5" x 3'8"
Calculated Area: 27 sq. ft
Included: No

Heated: No
Finished: Yes
Enclosed: No
Contiguous: Yes
Permitted: Yes
Wet space: No
Addition: No
Conversion: No

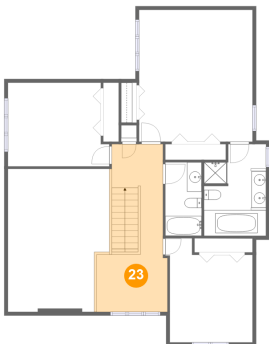
22 Floor 3 - Bedroom



Max Dimensions: 11'4" x 14'3"
Calculated Area: 144 sq. ft
Included: Yes

Heated: Yes
Finished: Yes
Enclosed: Yes
Contiguous: Yes
Permitted: Yes
Wet space: No
Addition: No
Conversion: No

23 Floor 3 - Hall

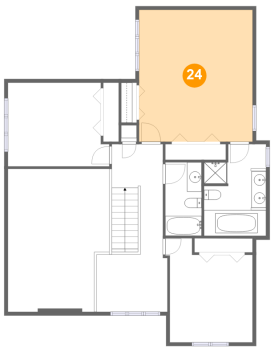


Max Dimensions: 9'8" x 22'11"
Calculated Area: 188 sq. ft
Included: Yes

Heated: Yes
Finished: Yes
Enclosed: Yes
Contiguous: Yes
Permitted: Yes
Wet space: No
Addition: No
Conversion: No

6530 Trevilian Road, Meadowood, Hollins, Roanoke, Roanoke County, Virginia, United States, 24019

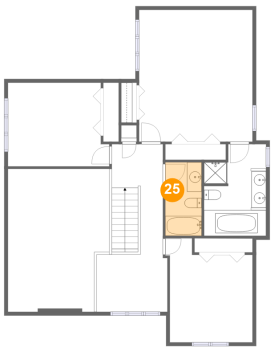
24 Floor 3 - Primary Bedroom



Max Dimensions: 15'6" x 18'0"
Calculated Area: 280 sq. ft
Included: Yes

Heated: Yes
Finished: Yes
Enclosed: Yes
Contiguous: Yes
Permitted: Yes
Wet space: No
Addition: No
Conversion: No

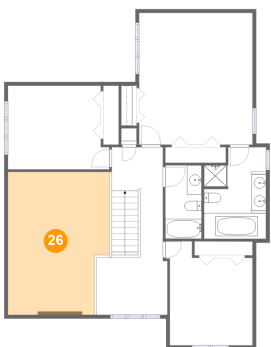
25 Floor 3 - Bath



Max Dimensions: 4'11" x 10'0"
Calculated Area: 50 sq. ft
Included: Yes

Heated: Yes
Finished: Yes
Enclosed: Yes
Contiguous: Yes
Permitted: Yes
Wet space: Yes
Addition: No
Conversion: No

26 Floor 3 - Open To Below

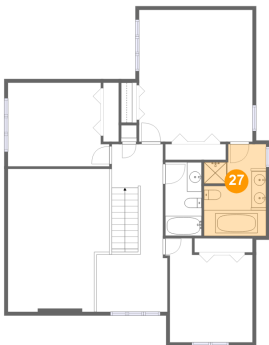


Max Dimensions: 13'10" x 19'6"
Calculated Area: 254 sq. ft
Included: No

Heated: No
Finished: No
Enclosed: No
Contiguous: Yes
Permitted: No
Wet space: No
Addition: No
Conversion: No

6530 Trevilian Road, Meadewood, Hollins, Roanoke, Roanoke County, Virginia, United States, 24019

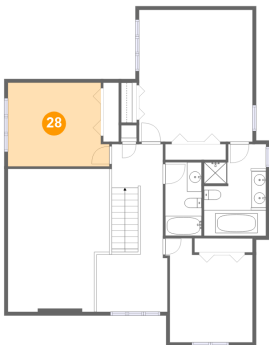
27 Floor 3 - Primary Bath



Max Dimensions: 8'6" x 12'6"
Calculated Area: 97 sq. ft
Included: Yes

Heated: Yes
Finished: Yes
Enclosed: Yes
Contiguous: Yes
Permitted: Yes
Wet space: Yes
Addition: No
Conversion: No

28 Floor 3 - Bedroom



Max Dimensions: 13'10" x 11'5"
Calculated Area: 149 sq. ft
Included: Yes

Heated: Yes
Finished: Yes
Enclosed: Yes
Contiguous: Yes
Permitted: Yes
Wet space: No
Addition: No
Conversion: No