

Home report

30 Island Green Circle, Penhook, Franklin County, Virginia,
United States, 24137



Total Area: 3721 sq. ft

Floor 1: 1558 sq. ft, Floor 2: 1823 sq. ft, Floor 3: 340 sq. ft

Excluded: Room Electrical 57 sq. ft, Storage 145 sq. ft, Outdoor Patio Covered 286 sq. ft, Garage 501 sq. ft, Undefined 14 sq. ft, Outdoor Porch Screen 136 sq. ft, Outdoor Porch 48 sq. ft, Outdoor Balcony 189 sq. ft, Opentobelow 143 sq. ft

Property summary



3
Floors



4
Bedrooms



3
Bathrooms

Home report

**30 Island Green Circle, Penhook, Franklin County, Virginia,
United States, 24137**



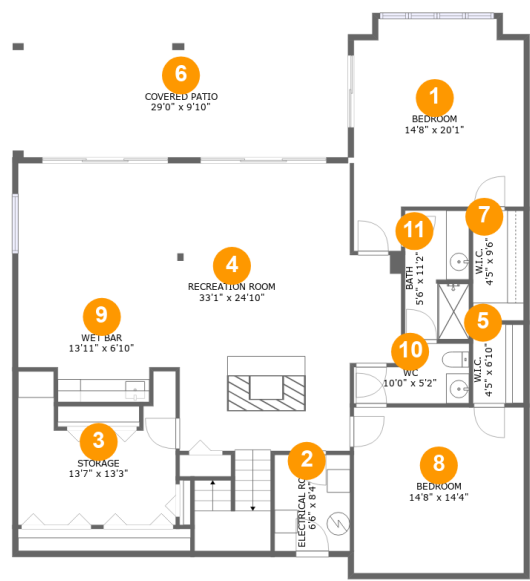
1
Half baths



1
Garages

Home report

30 Island Green Circle, Penhook, Franklin County, Virginia,
United States, 24137



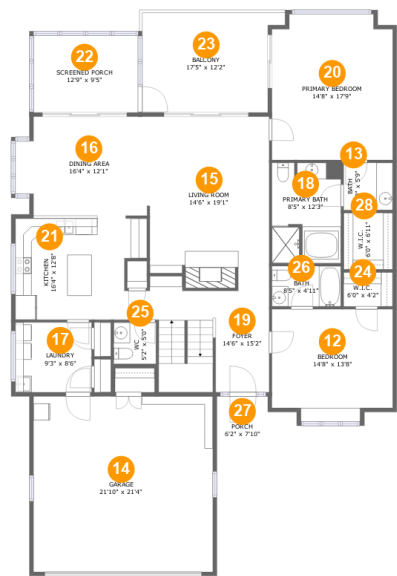
Room dimensions

Floor 1 Total:1558sqft Excluded: 488sqft

#		Max Dimensions	sqft	Included
1	Bedroom	14'8" x 20'1"	246 sq. ft	Yes
2	Electrical Room	6'6" x 8'4"	54 sq. ft	No
3	Storage	13'7" x 13'3"	139 sq. ft	No
4	Recreation Room	33'1" x 24'10"	648 sq. ft	Yes
5	W.I.C.	4'5" x 6'10"	30 sq. ft	Yes
6	Covered Patio	29'0" x 9'10"	286 sq. ft	No
7	W.I.C.	4'5" x 9'6"	42 sq. ft	Yes
8	Bedroom	14'8" x 14'4"	211 sq. ft	Yes
9	Wet Bar	13'11" x 6'10"	77 sq. ft	Yes
10	WC	10'0" x 5'2"	43 sq. ft	Yes
11	Bath	5'6" x 11'2"	61 sq. ft	Yes

Home report

30 Island Green Circle, Penhook, Franklin County, Virginia,
United States, 24137



Room dimensions

Floor 2 Total:1823sqft Excluded: 888sqft

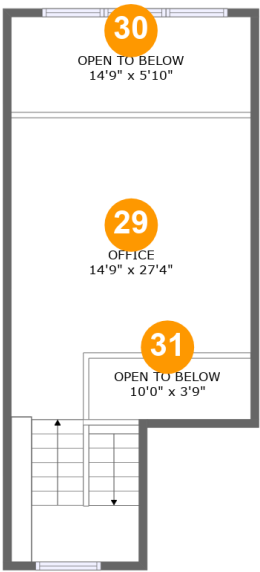
#		Max Dimensions	sqft	Included
12	Bedroom	14'8" x 13'8"	189 sq. ft	Yes
13	Bath	6'0" x 5'9"	34 sq. ft	Yes
14	Garage	21'10" x 21'4"	466 sq. ft	No
15	Living Room	14'6" x 19'1"	285 sq. ft	Yes
16	Dining Area	16'4" x 12'1"	184 sq. ft	Yes
17	Laundry	9'3" x 8'6"	79 sq. ft	Yes
18	Primary Bath	8'5" x 12'3"	100 sq. ft	Yes
19	Foyer	14'6" x 15'2"	185 sq. ft	Yes
20	Primary Bedroom	14'8" x 17'9"	253 sq. ft	Yes
21	Kitchen	16'4" x 12'8"	191 sq. ft	Yes
22	Screened Porch	12'9" x 9'5"	119 sq. ft	No

Home report

**30 Island Green Circle, Penhook, Franklin County, Virginia,
United States, 24137**

#		Max Dimensions	sqft	Included
23	Balcony	17'5" x 12'2"	189 sq. ft	No
24	W.I.C.	6'0" x 4'2"	25 sq. ft	Yes
25	WC	5'2" x 5'0"	26 sq. ft	Yes
26	Bath	8'5" x 4'11"	41 sq. ft	Yes
27	Porch	6'2" x 7'10"	48 sq. ft	No
28	W.I.C.	6'0" x 6'11"	41 sq. ft	Yes

30 Island Green Circle, Penhook, Franklin County, Virginia,
United States, 24137



Room dimensions

Floor 3 Total:340sqft Excluded: 143sqft

#		Max Dimensions	sqft	Included
29	Office	14'9" x 27'4"	310 sq. ft	Yes
30	Open To Below	14'9" x 5'10"	87 sq. ft	No
31	Open To Below	10'0" x 3'9"	38 sq. ft	No

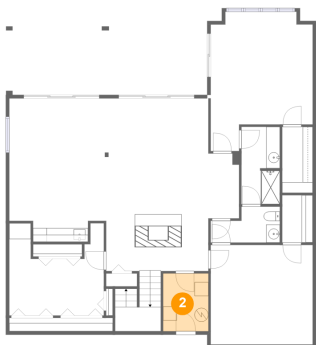
1 Floor 1 - Bedroom



Max Dimensions: 14'8" x 20'1"
Calculated Area: 246 sq. ft
Included: Yes

Heated: Yes
Finished: Yes
Enclosed: Yes
Contiguous: Yes
Permitted: Yes
Wet space: No
Addition: No
Conversion: No

2 Floor 1 - Electrical Room



Max Dimensions: 6'6" x 8'4"
Calculated Area: 54 sq. ft
Included: No

Heated: No
Finished: No
Enclosed: Yes
Contiguous: Yes
Permitted: Yes
Wet space: No
Addition: No
Conversion: No

30 Island Green Circle, Penhook, Franklin County, Virginia,
United States, 24137

3 Floor 1 - Storage



Max Dimensions: 13'7" x 13'3"
Calculated Area: 139 sq. ft
Included: No

Heated: No
Finished: No
Enclosed: No
Contiguous: No
Permitted: Yes
Wet space: No
Addition: No
Conversion: No

4 Floor 1 - Recreation Room



Max Dimensions: 33'1" x 24'10"
Calculated Area: 648 sq. ft
Included: Yes

Heated: Yes
Finished: Yes
Enclosed: Yes
Contiguous: Yes
Permitted: Yes
Wet space: No
Addition: No
Conversion: No

5 Floor 1 - W.I.C.



Max Dimensions: 4'5" x 6'10"
Calculated Area: 30 sq. ft
Included: Yes

Heated: Yes
Finished: Yes
Enclosed: Yes
Contiguous: Yes
Permitted: Yes
Wet space: No
Addition: No
Conversion: No

6 Floor 1 - Covered Patio



Max Dimensions: 29'0" x 9'10"
Calculated Area: 286 sq. ft
Included: No

Heated: No
Finished: Yes
Enclosed: No
Contiguous: Yes
Permitted: Yes
Wet space: No
Addition: No
Conversion: No

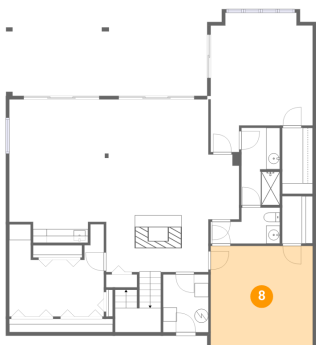
7 Floor 1 - W.I.C.



Max Dimensions: 4'5" x 9'6"
Calculated Area: 42 sq. ft
Included: Yes

Heated: Yes
Finished: Yes
Enclosed: Yes
Contiguous: Yes
Permitted: Yes
Wet space: No
Addition: No
Conversion: No

8 Floor 1 - Bedroom



Max Dimensions: 14'8" x 14'4"
Calculated Area: 211 sq. ft
Included: Yes

Heated: Yes
Finished: Yes
Enclosed: Yes
Contiguous: Yes
Permitted: Yes
Wet space: No
Addition: No
Conversion: No

30 Island Green Circle, Penhook, Franklin County, Virginia,
United States, 24137

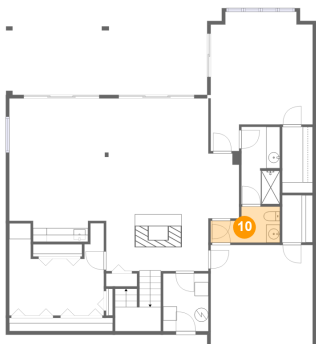
9 Floor 1 - Wet Bar



Max Dimensions: 13'11" x 6'10"
Calculated Area: 77 sq. ft
Included: Yes

Heated: Yes
Finished: Yes
Enclosed: Yes
Contiguous: Yes
Permitted: Yes
Wet space: No
Addition: No
Conversion: No

10 Floor 1 - WC



Max Dimensions: 10'0" x 5'2"
Calculated Area: 43 sq. ft
Included: Yes

Heated: Yes
Finished: Yes
Enclosed: Yes
Contiguous: Yes
Permitted: Yes
Wet space: Yes
Addition: No
Conversion: No

11 Floor 1 - Bath



Max Dimensions: 5'6" x 11'2"
Calculated Area: 61 sq. ft
Included: Yes

Heated: Yes
Finished: Yes
Enclosed: Yes
Contiguous: Yes
Permitted: Yes
Wet space: Yes
Addition: No
Conversion: No

30 Island Green Circle, Penhook, Franklin County, Virginia,
United States, 24137

12 Floor 2 - Bedroom



Max Dimensions: 14'8" x 13'8"
Calculated Area: 189 sq. ft
Included: Yes

Heated: Yes
Finished: Yes
Enclosed: Yes
Contiguous: Yes
Permitted: Yes
Wet space: No
Addition: No
Conversion: No

13 Floor 2 - Bath



Max Dimensions: 6'0" x 5'9"
Calculated Area: 34 sq. ft
Included: Yes

Heated: Yes
Finished: Yes
Enclosed: Yes
Contiguous: Yes
Permitted: Yes
Wet space: Yes
Addition: No
Conversion: No

14 Floor 2 - Garage



Max Dimensions: 21'10" x 21'4"
Calculated Area: 466 sq. ft
Included: No

Heated: No
Finished: No
Enclosed: Yes
Contiguous: Yes
Permitted: Yes
Wet space: No
Addition: No
Conversion: No

30 Island Green Circle, Penhook, Franklin County, Virginia,
United States, 24137

15 Floor 2 - Living Room



Max Dimensions: 14'6" x 19'1"
Calculated Area: 285 sq. ft
Included: Yes

Heated: Yes
Finished: Yes
Enclosed: Yes
Contiguous: Yes
Permitted: Yes
Wet space: No
Addition: No
Conversion: No

16 Floor 2 - Dining Area



Max Dimensions: 16'4" x 12'1"
Calculated Area: 184 sq. ft
Included: Yes

Heated: Yes
Finished: Yes
Enclosed: Yes
Contiguous: Yes
Permitted: Yes
Wet space: No
Addition: No
Conversion: No

17 Floor 2 - Laundry



Max Dimensions: 9'3" x 8'6"
Calculated Area: 79 sq. ft
Included: Yes

Heated: Yes
Finished: Yes
Enclosed: Yes
Contiguous: Yes
Permitted: Yes
Wet space: No
Addition: No
Conversion: No

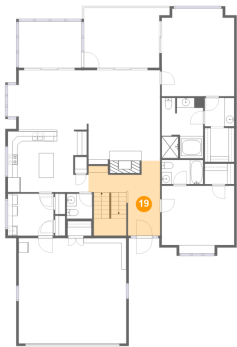
18 Floor 2 - Primary Bath



Max Dimensions: 8'5" x 12'3"
Calculated Area: 100 sq. ft
Included: Yes

Heated: Yes
Finished: Yes
Enclosed: Yes
Contiguous: Yes
Permitted: Yes
Wet space: Yes
Addition: No
Conversion: No

19 Floor 2 - Foyer



Max Dimensions: 14'6" x 15'2"
Calculated Area: 185 sq. ft
Included: Yes

Heated: Yes
Finished: Yes
Enclosed: Yes
Contiguous: Yes
Permitted: Yes
Wet space: No
Addition: No
Conversion: No

20 Floor 2 - Primary Bedroom



Max Dimensions: 14'8" x 17'9"
Calculated Area: 253 sq. ft
Included: Yes

Heated: Yes
Finished: Yes
Enclosed: Yes
Contiguous: Yes
Permitted: Yes
Wet space: No
Addition: No
Conversion: No

30 Island Green Circle, Penhook, Franklin County, Virginia,
United States, 24137

21 Floor 2 - Kitchen



Max Dimensions: 16'4" x 12'8"
Calculated Area: 191 sq. ft
Included: Yes

Heated: Yes
Finished: Yes
Enclosed: Yes
Contiguous: Yes
Permitted: Yes
Wet space: No
Addition: No
Conversion: No

22 Floor 2 - Screened Porch



Max Dimensions: 12'9" x 9'5"
Calculated Area: 119 sq. ft
Included: No

Heated: No
Finished: Yes
Enclosed: No
Contiguous: Yes
Permitted: Yes
Wet space: No
Addition: No
Conversion: No

23 Floor 2 - Balcony



Max Dimensions: 17'5" x 12'2"
Calculated Area: 189 sq. ft
Included: No

Heated: No
Finished: Yes
Enclosed: No
Contiguous: Yes
Permitted: Yes
Wet space: No
Addition: No
Conversion: No

30 Island Green Circle, Penhook, Franklin County, Virginia,
United States, 24137

24 Floor 2 - W.I.C.



Max Dimensions: 6'0" x 4'2"
Calculated Area: 25 sq. ft
Included: Yes

Heated: Yes
Finished: Yes
Enclosed: Yes
Contiguous: Yes
Permitted: Yes
Wet space: No
Addition: No
Conversion: No

25 Floor 2 - WC



Max Dimensions: 5'2" x 5'0"
Calculated Area: 26 sq. ft
Included: Yes

Heated: Yes
Finished: Yes
Enclosed: Yes
Contiguous: Yes
Permitted: Yes
Wet space: Yes
Addition: No
Conversion: No

26 Floor 2 - Bath



Max Dimensions: 8'5" x 4'11"
Calculated Area: 41 sq. ft
Included: Yes

Heated: Yes
Finished: Yes
Enclosed: Yes
Contiguous: Yes
Permitted: Yes
Wet space: Yes
Addition: No
Conversion: No

30 Island Green Circle, Penhook, Franklin County, Virginia,
United States, 24137

27 Floor 2 - Porch



Max Dimensions: 6'2" x 7'10"
Calculated Area: 48 sq. ft
Included: No

Heated: No
Finished: Yes
Enclosed: No
Contiguous: Yes
Permitted: Yes
Wet space: No
Addition: No
Conversion: No

28 Floor 2 - W.I.C.



Max Dimensions: 6'0" x 6'11"
Calculated Area: 41 sq. ft
Included: Yes

Heated: Yes
Finished: Yes
Enclosed: Yes
Contiguous: Yes
Permitted: Yes
Wet space: No
Addition: No
Conversion: No

29 Floor 3 - Office



Max Dimensions: 14'9" x 27'4"
Calculated Area: 310 sq. ft
Included: Yes

Heated: Yes
Finished: Yes
Enclosed: Yes
Contiguous: Yes
Permitted: Yes
Wet space: No
Addition: No
Conversion: No

30 Island Green Circle, Penhook, Franklin County, Virginia,
United States, 24137

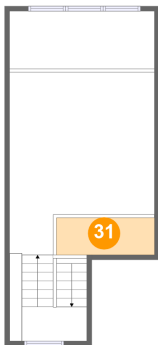
30 Floor 3 - Open To Below



Max Dimensions: 14'9" x 5'10"
Calculated Area: 87 sq. ft
Included: No

Heated: No
Finished: No
Enclosed: No
Contiguous: Yes
Permitted: No
Wet space: No
Addition: No
Conversion: No

31 Floor 3 - Open To Below



Max Dimensions: 10'0" x 3'9"
Calculated Area: 38 sq. ft
Included: No

Heated: No
Finished: No
Enclosed: No
Contiguous: Yes
Permitted: No
Wet space: No
Addition: No
Conversion: No