





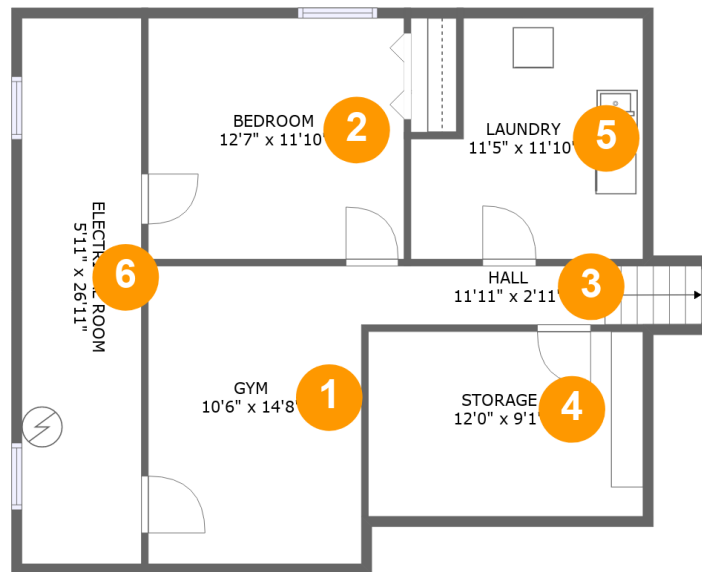
3009 Lynn Ct, Mt Prospect, Illinois, United States



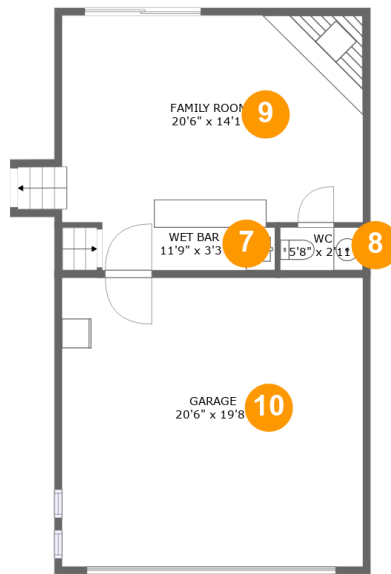
Property Summary

 **1** garages  **4** bedrooms  **2** bathrooms  **1** half baths

 **4** floors  **2,508** Gross Living Area sqft  **3,385** total sqft

3009 Lynn Ct, Mt Prospect, Illinois, United States**Room Dimensions****Floor 1****Total sqft: 860****Living area: 416**

#	Room name	Dimensions	Area (sqft)	Counted as Living Area
1	Gym	10'6" x 14'8"	154 sq. ft	Yes
2	Bedroom	12'7" x 11'10"	150 sq. ft	Yes
3	Hall	11'11" x 2'11"	49 sq. ft	Yes
4	Storage	12'0" x 9'1"	123 sq. ft	No
5	Laundry	11'5" x 11'10"	120 sq. ft	No
6	Electrical Room	5'11" x 26'11"	159 sq. ft	No

3009 Lynn Ct, Mt Prospect, Illinois, United States**Room Dimensions****Floor 2****Total sqft: 839****Living area: 406**

#	Room name	Dimensions	Area (sqft)	Counted as Living Area
7	Wet Bar	11'9" x 3'3"	38 sq. ft	Yes
8	Wc	5'8" x 2'11"	16 sq. ft	Yes
9	Family Room	20'6" x 14'1"	297 sq. ft	Yes
10	Garage	20'6" x 19'8"	403 sq. ft	No

3009 Lynn Ct, Mt Prospect, Illinois, United States



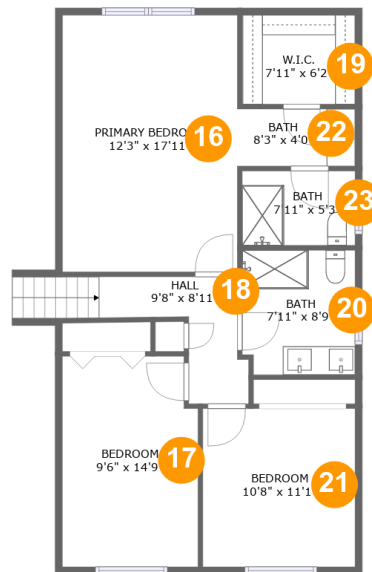
Room Dimensions

Floor 3

Total sqft: 824

Living area: 824

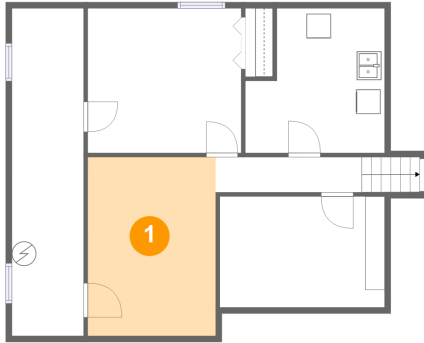
#	Room name	Dimensions	Area (sqft)	Counted as Living Area
11	Breakfast Nook	7'11" x 12'9"	97 sq. ft	Yes
12	Kitchen	10'4" x 12'5"	128 sq. ft	Yes
13	Dining Area	12'1" x 12'8"	153 sq. ft	Yes
14	Foyer	6'4" x 12'6"	90 sq. ft	Yes
15	Living Room	20'11" x 12'6"	270 sq. ft	Yes

3009 Lynn Ct, Mt Prospect, Illinois, United States**Room Dimensions****Floor 4****Total sqft: 862****Living area: 862**

#	Room name	Dimensions	Area (sqft)	Counted as Living Area
16	Primary Bedroom	12'3" x 17'11"	220 sq. ft	Yes
17	Bedroom	9'6" x 14'9"	136 sq. ft	Yes
18	Hall	9'8" x 8'11"	68 sq. ft	Yes
19	W.i.c.	7'11" x 6'2"	49 sq. ft	Yes
20	Bath	7'11" x 8'9"	68 sq. ft	Yes
21	Bedroom	10'8" x 11'1"	118 sq. ft	Yes
22	Bath	8'3" x 4'0"	33 sq. ft	Yes
23	Bath	7'11" x 5'3"	41 sq. ft	Yes

3009 Lynn Ct, Mt Prospect, Illinois, United States

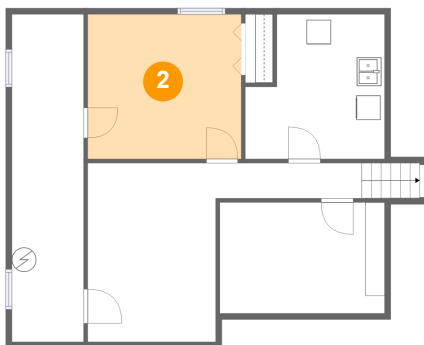
1 Floor 1 - Gym



Dimensions: 10'6" x 14'8"
Area: 154 sq. ft
Counted as Living Area:
Yes

Heated: Yes
Finished: Yes
Enclosed: Yes
Contiguous:
Yes
Permitted: Yes
Wet Space: No
Addition: No
Conversion: No

2 Floor 1 - Bedroom

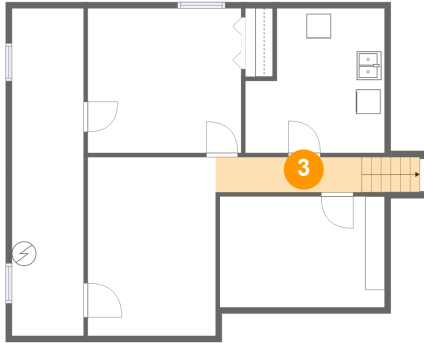


Dimensions: 12'7" x 11'10"
Area: 150 sq. ft
Counted as Living Area:
Yes

Heated: Yes
Finished: Yes
Enclosed: Yes
Contiguous:
Yes
Permitted: Yes
Wet Space: No
Addition: No
Conversion: No

3009 Lynn Ct, Mt Prospect, Illinois, United States

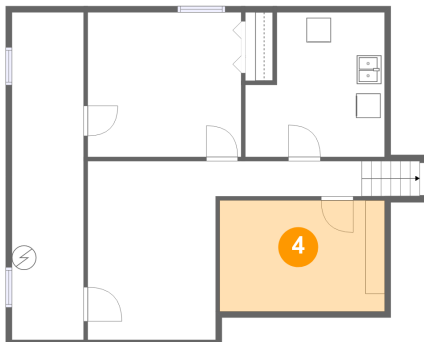
3 Floor 1 - Hall



Dimensions: 11'11" x 2'11"
Area: 49 sq. ft
Counted as Living Area: Yes

Heated: Yes
Finished: Yes
Enclosed: Yes
Contiguous: Yes
Permitted: Yes
Wet Space: No
Addition: No
Conversion: No

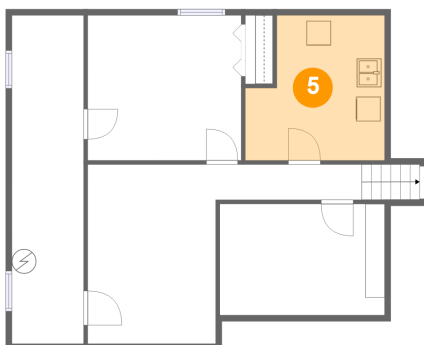
4 Floor 1 - Storage



Dimensions: 12'0" x 9'1"
Area: 123 sq. ft
Counted as Living Area: No

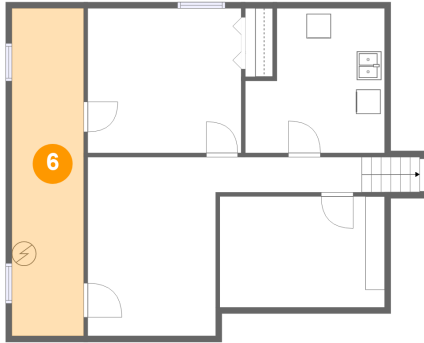
Heated: No
Finished: No
Enclosed: No
Contiguous: Yes
Permitted: Yes
Wet Space: No
Addition: No
Conversion: No

5 Floor 1 - Laundry



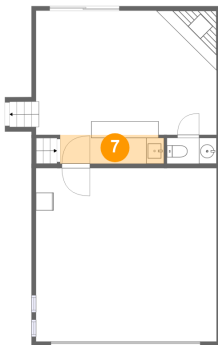
Dimensions: 11'5" x 11'10"
Area: 120 sq. ft
Counted as Living Area: No

Heated: Yes
Finished: No
Enclosed: Yes
Contiguous: Yes
Permitted: Yes
Wet Space: No
Addition: No
Conversion: No

3009 Lynn Ct, Mt Prospect, Illinois, United States**6 Floor 1 - Electrical Room**

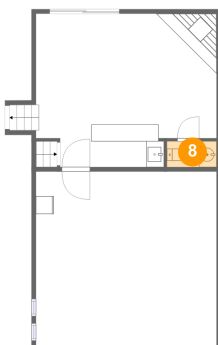
Dimensions: 5'11" x 26'11"
 Area: 159 sq. ft
 Counted as Living Area: No

Heated: No
 Finished: No
 Enclosed: Yes
 Contiguous: Yes
 Permitted: Yes
 Wet Space: No
 Addition: No
 Conversion: No

7 Floor 2 - Wet Bar

Dimensions: 11'9" x 3'3"
 Area: 38 sq. ft
 Counted as Living Area:
 Yes

Heated: Yes
 Finished: Yes
 Enclosed: Yes
 Contiguous:
 Yes
 Permitted: Yes
 Wet Space: No
 Addition: No
 Conversion: No

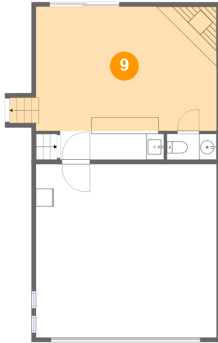
8 Floor 2 - Wc

Dimensions: 5'8" x 2'11"
 Area: 16 sq. ft
 Counted as Living Area:
 Yes

Heated: Yes
 Finished: Yes
 Enclosed: Yes
 Contiguous:
 Yes
 Permitted: Yes
 Wet Space: Yes
 Addition: No
 Conversion: No

3009 Lynn Ct, Mt Prospect, Illinois, United States

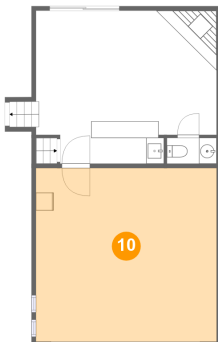
9 Floor 2 - Family Room



Dimensions: 20'6" x 14'1"
Area: 297 sq. ft
Counted as Living Area:
Yes

Heated: Yes
Finished: Yes
Enclosed: Yes
Contiguous:
Yes
Permitted: Yes
Wet Space: No
Addition: No
Conversion: No

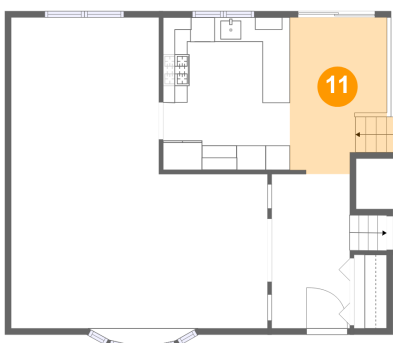
10 Floor 2 - Garage



Dimensions: 20'6" x 19'8"
Area: 403 sq. ft
Counted as Living Area: No

Heated: No
Finished: No
Enclosed: Yes
Contiguous: Yes
Permitted: Yes
Wet Space: No
Addition: No
Conversion: No

11 Floor 3 - Breakfast Nook

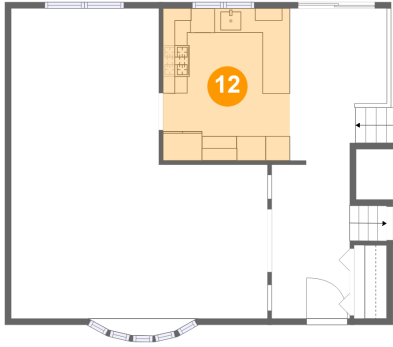


Dimensions: 7'11" x 12'9"
Area: 97 sq. ft
Counted as Living Area:
Yes

Heated: Yes
Finished: Yes
Enclosed: Yes
Contiguous:
Yes
Permitted: Yes
Wet Space: No
Addition: No
Conversion: No

3009 Lynn Ct, Mt Prospect, Illinois, United States

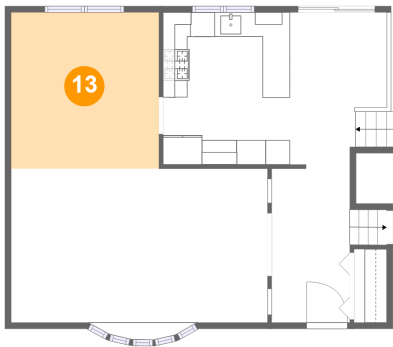
12 Floor 3 - Kitchen



Dimensions: 10'4" x 12'5"
Area: 128 sq. ft
Counted as Living Area:
Yes

Heated: Yes
Finished: Yes
Enclosed: Yes
Contiguous:
Yes
Permitted: Yes
Wet Space: No
Addition: No
Conversion: No

13 Floor 3 - Dining Area



Dimensions: 12'1" x 12'8"
Area: 153 sq. ft
Counted as Living Area:
Yes

Heated: Yes
Finished: Yes
Enclosed: Yes
Contiguous:
Yes
Permitted: Yes
Wet Space: No
Addition: No
Conversion: No

14 Floor 3 - Foyer

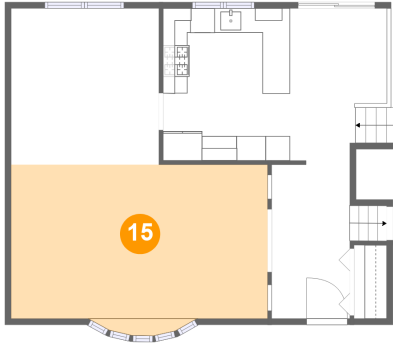


Dimensions: 6'4" x 12'6"
Area: 90 sq. ft
Counted as Living Area:
Yes

Heated: Yes
Finished: Yes
Enclosed: Yes
Contiguous:
Yes
Permitted: Yes
Wet Space: No
Addition: No
Conversion: No

3009 Lynn Ct, Mt Prospect, Illinois, United States

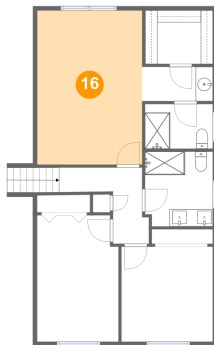
15 Floor 3 - Living Room



Dimensions: 20'11" x 12'6"
Area: 270 sq. ft
Counted as Living Area:
Yes

Heated: Yes
Finished: Yes
Enclosed: Yes
Contiguous:
Yes
Permitted: Yes
Wet Space: No
Addition: No
Conversion: No

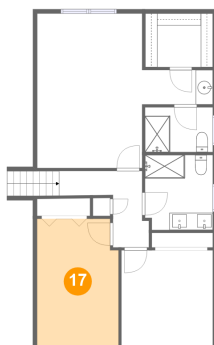
16 Floor 4 - Primary Bedroom



Dimensions: 12'3" x 17'11"
Area: 220 sq. ft
Counted as Living Area:
Yes

Heated: Yes
Finished: Yes
Enclosed: Yes
Contiguous:
Yes
Permitted: Yes
Wet Space: No
Addition: No
Conversion: No

17 Floor 4 - Bedroom

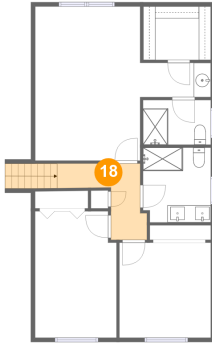


Dimensions: 9'6" x 14'9"
Area: 136 sq. ft
Counted as Living Area:
Yes

Heated: Yes
Finished: Yes
Enclosed: Yes
Contiguous:
Yes
Permitted: Yes
Wet Space: No
Addition: No
Conversion: No

3009 Lynn Ct, Mt Prospect, Illinois, United States

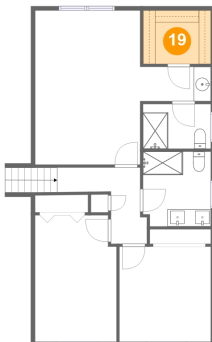
18 Floor 4 - Hall



Dimensions: 9'8" x 8'11"
Area: 68 sq. ft
Counted as Living Area:
Yes

Heated: Yes
Finished: Yes
Enclosed: Yes
Contiguous:
Yes
Permitted: Yes
Wet Space: No
Addition: No
Conversion: No

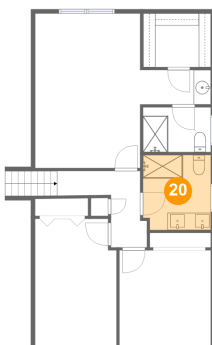
19 Floor 4 - W.i.c.



Dimensions: 7'11" x 6'2"
Area: 49 sq. ft
Counted as Living Area:
Yes

Heated: Yes
Finished: Yes
Enclosed: Yes
Contiguous:
Yes
Permitted: Yes
Wet Space: No
Addition: No
Conversion: No

20 Floor 4 - Bath

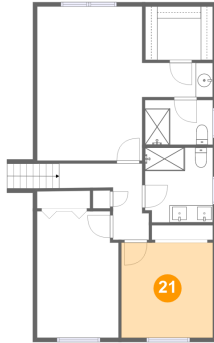


Dimensions: 7'11" x 8'9"
Area: 68 sq. ft
Counted as Living Area:
Yes

Heated: Yes
Finished: Yes
Enclosed: Yes
Contiguous:
Yes
Permitted: Yes
Wet Space: Yes
Addition: No
Conversion: No

3009 Lynn Ct, Mt Prospect, Illinois, United States

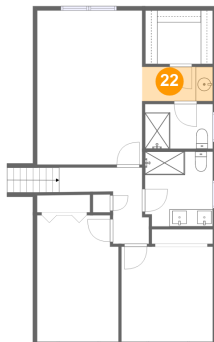
21 Floor 4 - Bedroom



Dimensions: 10'8" x 11'1"
Area: 118 sq. ft
Counted as Living Area:
Yes

Heated: Yes
Finished: Yes
Enclosed: Yes
Contiguous:
Yes
Permitted: Yes
Wet Space: No
Addition: No
Conversion: No

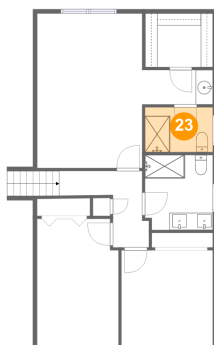
22 Floor 4 - Bath



Dimensions: 8'3" x 4'0"
Area: 33 sq. ft
Counted as Living Area:
Yes

Heated: Yes
Finished: Yes
Enclosed: Yes
Contiguous:
Yes
Permitted: Yes
Wet Space: Yes
Addition: No
Conversion: No

23 Floor 4 - Bath



Dimensions: 7'11" x 5'3"
Area: 41 sq. ft
Counted as Living Area:
Yes

Heated: Yes
Finished: Yes
Enclosed: Yes
Contiguous:
Yes
Permitted: Yes
Wet Space: Yes
Addition: No
Conversion: No