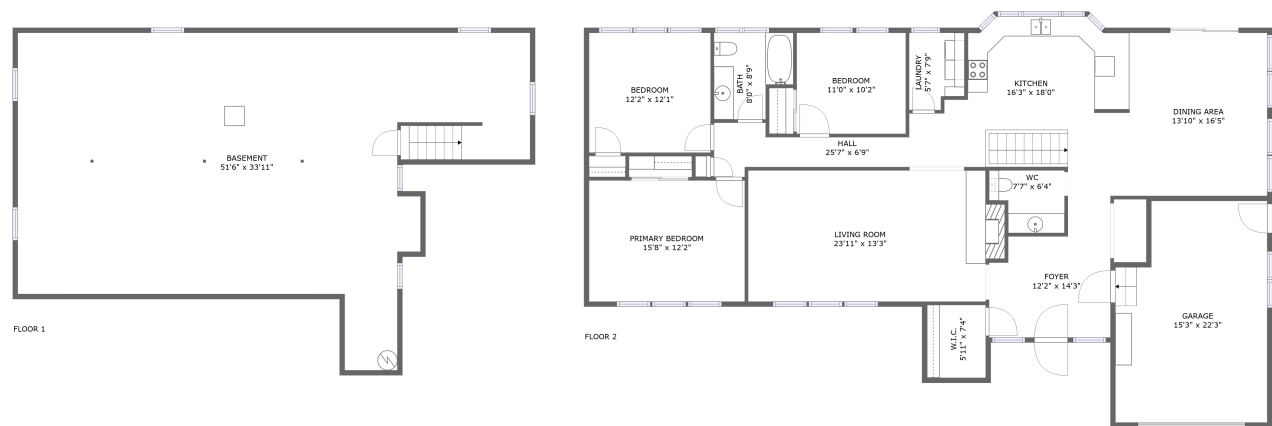




Home report


6028 Walworth-Ontario Road, Ontario, Wayne County, New York,
United States, 14519





Property summary


 **1** Garages


 **3** Bedrooms

 **1** Bathrooms

 **1** Half baths

 **2** Floors

 **1,917** Gross living area sqft

 **3,576** Total sqft

Home report

6028 Walworth-Ontario Road, Ontario, Wayne County, New York,
United States, 14519



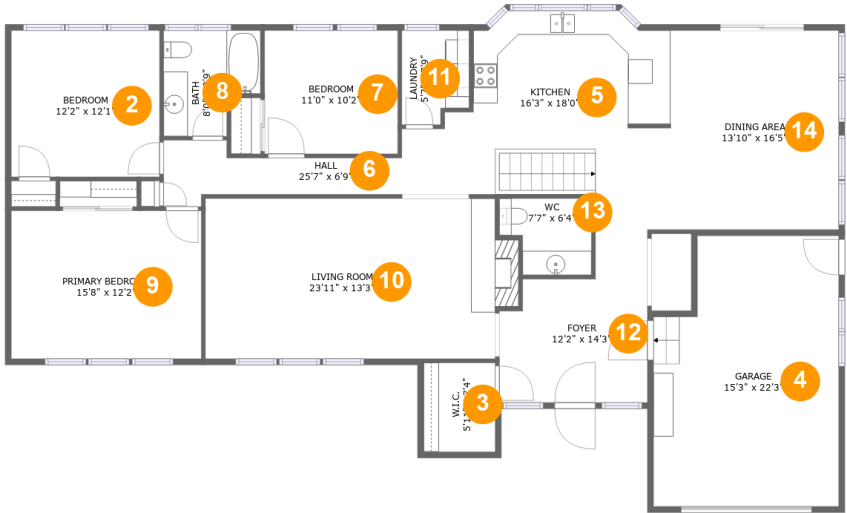
Room dimensions

Floor 1 Total sqft: 1319 Living area: 0

#		Max Dimensions	sqft	Included
1	Basement	51'6" x 33'11"	1226 sq. ft	No

Home report

6028 Walworth-Ontario Road, Ontario, Wayne County, New York,
United States, 14519



Room dimensions

Floor 2

Total sqft: 2257

Living area: 1917

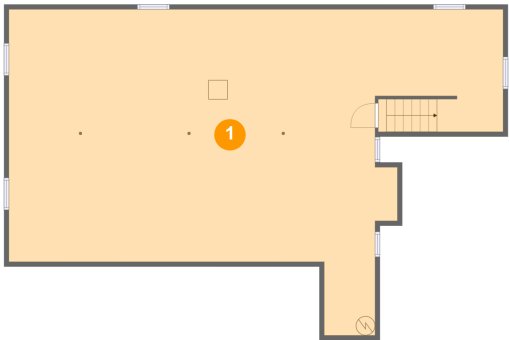
#		Max Dimensions	sqft	Included
2	Bedroom	12'2" x 12'1"	148 sq. ft	Yes
3	W.I.C.	5'11" x 7'4"	43 sq. ft	Yes
4	Garage	15'3" x 22'3"	317 sq. ft	No
5	Kitchen	16'3" x 18'0"	256 sq. ft	Yes
6	Hall	25'7" x 6'9"	105 sq. ft	Yes
7	Bedroom	11'0" x 10'2"	112 sq. ft	Yes
8	Bath	8'0" x 8'9"	60 sq. ft	Yes
9	Primary Bedroom	15'8" x 12'2"	191 sq. ft	Yes
10	Living Room	23'11" x 13'3"	327 sq. ft	Yes
11	Laundry	5'7" x 7'9"	40 sq. ft	Yes
12	Foyer	12'2" x 14'3"	137 sq. ft	Yes

Home report

6028 Walworth-Ontario Road, Ontario, Wayne County, New York,
United States, 14519

#		Max Dimensions	sqft	Included
13	WC	7'7" x 6'4"	42 sq. ft	Yes
14	Dining Area	13'10" x 16'5"	228 sq. ft	Yes

1 Floor 1 - Basement



Max Dimensions: 51'6" x 33'11"
Calculated Area: 1226 sq. ft
Included: No

Heated: Yes
Finished: No
Enclosed: Yes
Contiguous: Yes
Permitted: Yes
Wet space: No
Addition: No
Conversion: No

2 Floor 2 - Bedroom



Max Dimensions: 12'2" x 12'1"
Calculated Area: 148 sq. ft
Included: Yes

Heated: Yes
Finished: Yes
Enclosed: Yes
Contiguous: Yes
Permitted: Yes
Wet space: No
Addition: No
Conversion: No

6028 Walworth-Ontario Road, Ontario, Wayne County, New York,
United States, 14519

3 Floor 2 - W.I.C.



Max Dimensions: 5'11" x 7'4"
Calculated Area: 43 sq. ft
Included: Yes

Heated: Yes
Finished: Yes
Enclosed: Yes
Contiguous: Yes
Permitted: Yes
Wet space: No
Addition: No
Conversion: No

4 Floor 2 - Garage



Max Dimensions: 15'3" x 22'3"
Calculated Area: 317 sq. ft
Included: No

Heated: No
Finished: No
Enclosed: Yes
Contiguous: Yes
Permitted: Yes
Wet space: No
Addition: No
Conversion: No

5 Floor 2 - Kitchen

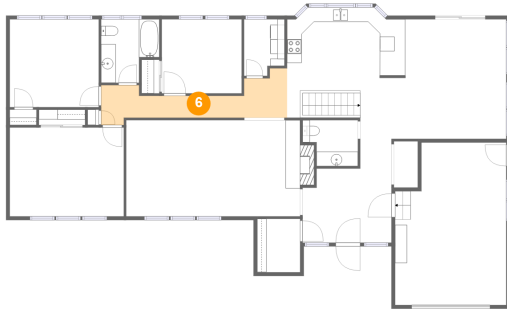


Max Dimensions: 16'3" x 18'0"
Calculated Area: 256 sq. ft
Included: Yes

Heated: Yes
Finished: Yes
Enclosed: Yes
Contiguous: Yes
Permitted: Yes
Wet space: No
Addition: No
Conversion: No

6028 Walworth-Ontario Road, Ontario, Wayne County, New York,
United States, 14519

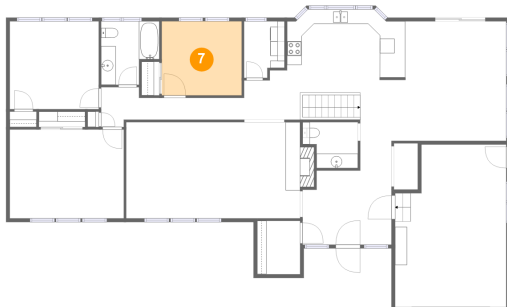
6 Floor 2 - Hall



Max Dimensions: 25'7" x 6'9"
Calculated Area: 105 sq. ft
Included: Yes

Heated: Yes
Finished: Yes
Enclosed: Yes
Contiguous: Yes
Permitted: Yes
Wet space: No
Addition: No
Conversion: No

7 Floor 2 - Bedroom



Max Dimensions: 11'0" x 10'2"
Calculated Area: 112 sq. ft
Included: Yes

Heated: Yes
Finished: Yes
Enclosed: Yes
Contiguous: Yes
Permitted: Yes
Wet space: No
Addition: No
Conversion: No

8 Floor 2 - Bath



Max Dimensions: 8'0" x 8'9"
Calculated Area: 60 sq. ft
Included: Yes

Heated: Yes
Finished: Yes
Enclosed: Yes
Contiguous: Yes
Permitted: Yes
Wet space: Yes
Addition: No
Conversion: No

6028 Walworth-Ontario Road, Ontario, Wayne County, New York,
United States, 14519

9 Floor 2 - Primary Bedroom



Max Dimensions: 15'8" x 12'2"
Calculated Area: 191 sq. ft
Included: Yes

Heated: Yes
Finished: Yes
Enclosed: Yes
Contiguous: Yes
Permitted: Yes
Wet space: No
Addition: No
Conversion: No

10 Floor 2 - Living Room



Max Dimensions: 23'11" x 13'3"
Calculated Area: 327 sq. ft
Included: Yes

Heated: Yes
Finished: Yes
Enclosed: Yes
Contiguous: Yes
Permitted: Yes
Wet space: No
Addition: No
Conversion: No

11 Floor 2 - Laundry



Max Dimensions: 5'7" x 7'9"
Calculated Area: 40 sq. ft
Included: Yes

Heated: Yes
Finished: Yes
Enclosed: Yes
Contiguous: Yes
Permitted: Yes
Wet space: No
Addition: No
Conversion: No

6028 Walworth-Ontario Road, Ontario, Wayne County, New York,
United States, 14519

12 Floor 2 - Foyer



Max Dimensions: 12'2" x 14'3"
Calculated Area: 137 sq. ft
Included: Yes

Heated: Yes
Finished: Yes
Enclosed: Yes
Contiguous: Yes
Permitted: Yes
Wet space: No
Addition: No
Conversion: No

13 Floor 2 - WC



Max Dimensions: 7'7" x 6'4"
Calculated Area: 42 sq. ft
Included: Yes

Heated: Yes
Finished: Yes
Enclosed: Yes
Contiguous: Yes
Permitted: Yes
Wet space: Yes
Addition: No
Conversion: No

14 Floor 2 - Dining Area



Max Dimensions: 13'10" x 16'5"
Calculated Area: 228 sq. ft
Included: Yes

Heated: Yes
Finished: Yes
Enclosed: Yes
Contiguous: Yes
Permitted: Yes
Wet space: No
Addition: No
Conversion: No