

Home report

13613 Inverness Place, Athens, Limestone County, Alabama,
United States, 35611



Total Area: 4790 sq. ft

Floor 1: 1073 sq. ft, Floor 2: 2521 sq. ft, Floor 3: 1196 sq. ft

Excluded: Storage 278 sq. ft, Garage 586 sq. ft, Covered patio 460 sq. ft, Fireplace 28 sq. ft

Property summary

 **3** Floors

 **4** Bedrooms

 **4** Bathrooms

Home report

**13613 Inverness Place, Athens, Limestone County, Alabama,
United States, 35611**



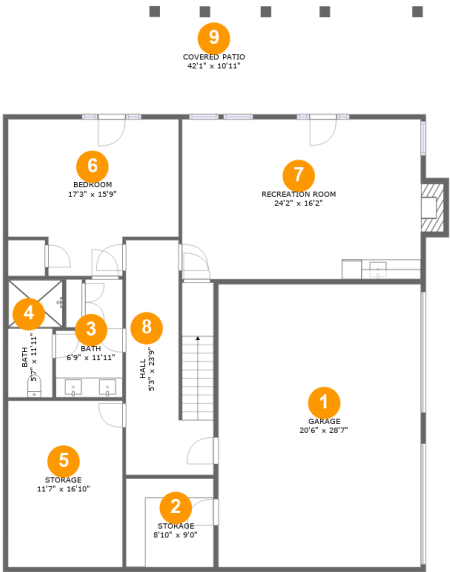
1
Half baths



1
Garages

Home report

13613 Inverness Place, Athens, Limestone County, Alabama,
United States, 35611



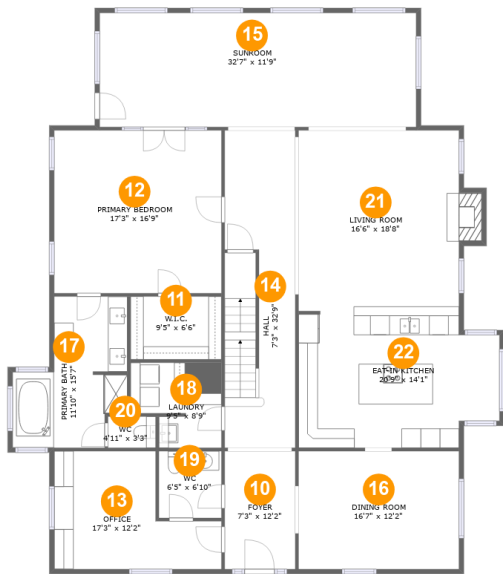
Room dimensions

Floor 1 Total:1073sqft Excluded: 1338sqft

#		Max Dimensions	sqft	Included
1	Garage	20'6" x 28'7"	586 sq. ft	No
2	Storage	8'10" x 9'0"	80 sq. ft	No
3	Bath	6'9" x 11'11"	65 sq. ft	Yes
4	Bath	5'7" x 11'11"	59 sq. ft	Yes
5	Storage	11'7" x 16'10"	195 sq. ft	No
6	Bedroom	17'3" x 15'9"	235 sq. ft	Yes
7	Recreation Room	24'2" x 16'2"	402 sq. ft	Yes
8	Hall	5'3" x 23'9"	191 sq. ft	Yes
9	Covered Patio	42'1" x 10'11"	460 sq. ft	No

Home report

13613 Inverness Place, Athens, Limestone County, Alabama,
United States, 35611



Room dimensions

Floor 2 Total:2521sqft Excluded: 14sqft

#		Max Dimensions	sqft	Included
10	Foyer	7'3" x 12'2"	89 sq. ft	Yes
11	W.I.C.	9'5" x 6'6"	61 sq. ft	Yes
12	Primary Bedroom	17'3" x 16'9"	290 sq. ft	Yes
13	Office	17'3" x 12'2"	161 sq. ft	Yes
14	Hall	7'3" x 32'9"	233 sq. ft	Yes
15	Sunroom	32'7" x 11'9"	384 sq. ft	Yes
16	Dining Room	16'7" x 12'2"	202 sq. ft	Yes
17	Primary Bath	11'10" x 15'7"	142 sq. ft	Yes
18	Laundry	9'5" x 8'9"	71 sq. ft	Yes
19	WC	6'5" x 6'10"	45 sq. ft	Yes
20	WC	4'11" x 3'3"	16 sq. ft	Yes

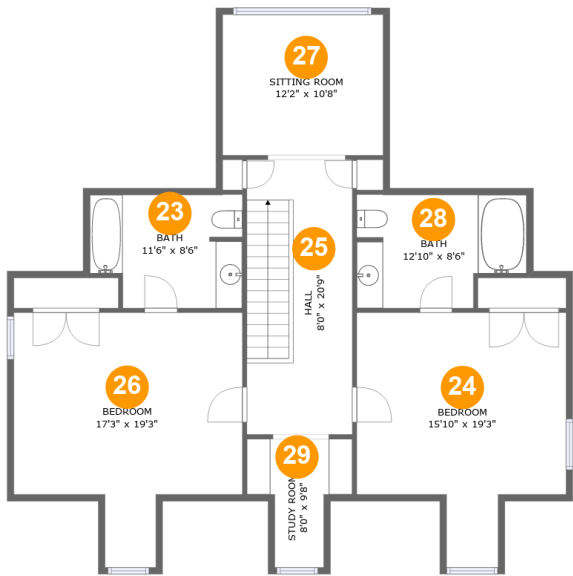
Home report

13613 Inverness Place, Athens, Limestone County, Alabama,
United States, 35611

#		Max Dimensions	sqft	Included
21	Living Room	16'6" x 18'8"	320 sq. ft	Yes
22	Eat-in Kitchen	20'9" x 14'1"	270 sq. ft	Yes

Home report

13613 Inverness Place, Athens, Limestone County, Alabama,
United States, 35611



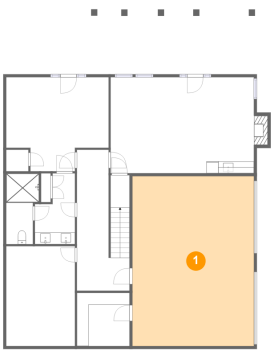
Room dimensions

Floor 3 Total:1196sqft Excluded: 0sqft

#		Max Dimensions	sqft	Included
23	Bath	11'6" x 8'6"	91 sq. ft	Yes
24	Bedroom	15'10" x 19'3"	239 sq. ft	Yes
25	Hall	8'0" x 20'9"	166 sq. ft	Yes
26	Bedroom	17'3" x 19'3"	259 sq. ft	Yes
27	Sitting Room	12'2" x 10'8"	129 sq. ft	Yes
28	Bath	12'10" x 8'6"	99 sq. ft	Yes
29	Study Room	8'0" x 9'8"	54 sq. ft	Yes

13613 Inverness Place, Athens, Limestone County, Alabama,
United States, 35611

1 Floor 1 - Garage



Max Dimensions: 20'6" x 28'7"
Calculated Area: 586 sq. ft
Included: No

Heated: No
Finished: No
Enclosed: Yes
Contiguous: Yes
Permitted: Yes
Wet space: No
Addition: No
Conversion: No

2 Floor 1 - Storage

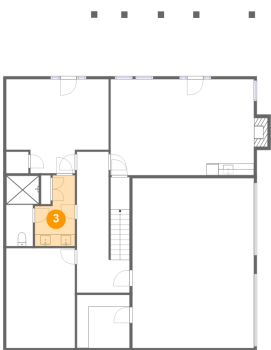


Max Dimensions: 8'10" x 9'0"
Calculated Area: 80 sq. ft
Included: No

Heated: No
Finished: No
Enclosed: No
Contiguous: Yes
Permitted: Yes
Wet space: No
Addition: No
Conversion: No

13613 Inverness Place, Athens, Limestone County, Alabama,
United States, 35611

3 Floor 1 - Bath



Max Dimensions: 6'9" x 11'11"
Calculated Area: 65 sq. ft
Included: Yes

Heated: Yes
Finished: Yes
Enclosed: Yes
Contiguous: Yes
Permitted: Yes
Wet space: Yes
Addition: No
Conversion: No

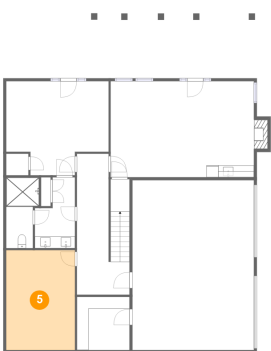
4 Floor 1 - Bath



Max Dimensions: 5'7" x 11'11"
Calculated Area: 59 sq. ft
Included: Yes

Heated: Yes
Finished: Yes
Enclosed: Yes
Contiguous: Yes
Permitted: Yes
Wet space: Yes
Addition: No
Conversion: No

5 Floor 1 - Storage

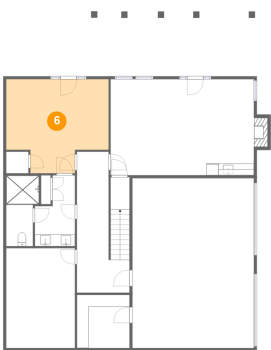


Max Dimensions: 11'7" x 16'10"
Calculated Area: 195 sq. ft
Included: No

Heated: No
Finished: No
Enclosed: No
Contiguous: Yes
Permitted: Yes
Wet space: No
Addition: No
Conversion: No

13613 Inverness Place, Athens, Limestone County, Alabama,
United States, 35611

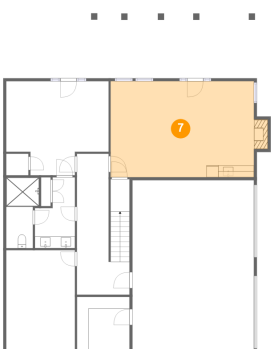
6 Floor 1 - Bedroom



Max Dimensions: 17'3" x 15'9"
Calculated Area: 235 sq. ft
Included: Yes

Heated: Yes
Finished: Yes
Enclosed: Yes
Contiguous: Yes
Permitted: Yes
Wet space: No
Addition: No
Conversion: No

7 Floor 1 - Recreation Room



Max Dimensions: 24'2" x 16'2"
Calculated Area: 402 sq. ft
Included: Yes

Heated: Yes
Finished: Yes
Enclosed: Yes
Contiguous: Yes
Permitted: Yes
Wet space: No
Addition: No
Conversion: No

8 Floor 1 - Hall



Max Dimensions: 5'3" x 23'9"
Calculated Area: 191 sq. ft
Included: Yes

Heated: Yes
Finished: Yes
Enclosed: Yes
Contiguous: Yes
Permitted: Yes
Wet space: No
Addition: No
Conversion: No

13613 Inverness Place, Athens, Limestone County, Alabama,
United States, 35611

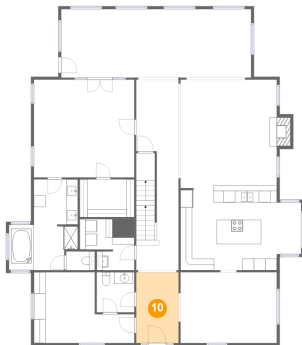
9 Floor 1 - Covered Patio



Max Dimensions: 42'1" x 10'11"
Calculated Area: 460 sq. ft
Included: No

Heated: No
Finished: Yes
Enclosed: No
Contiguous: Yes
Permitted: Yes
Wet space: No
Addition: No
Conversion: No

10 Floor 2 - Foyer



Max Dimensions: 7'3" x 12'2"
Calculated Area: 89 sq. ft
Included: Yes

Heated: Yes
Finished: Yes
Enclosed: Yes
Contiguous: Yes
Permitted: Yes
Wet space: No
Addition: No
Conversion: No

11 Floor 2 - W.I.C.

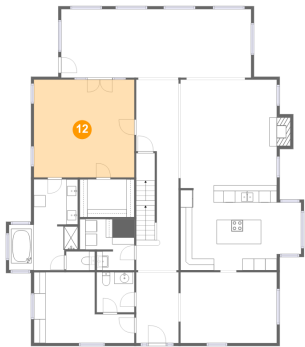


Max Dimensions: 9'5" x 6'6"
Calculated Area: 61 sq. ft
Included: Yes

Heated: Yes
Finished: Yes
Enclosed: Yes
Contiguous: Yes
Permitted: Yes
Wet space: No
Addition: No
Conversion: No

13613 Inverness Place, Athens, Limestone County, Alabama,
United States, 35611

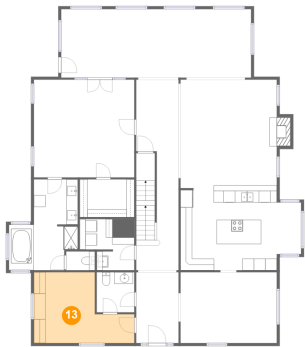
12 Floor 2 - Primary Bedroom



Max Dimensions: 17'3" x 16'9"
Calculated Area: 290 sq. ft
Included: Yes

Heated: Yes
Finished: Yes
Enclosed: Yes
Contiguous: Yes
Permitted: Yes
Wet space: No
Addition: No
Conversion: No

13 Floor 2 - Office



Max Dimensions: 17'3" x 12'2"
Calculated Area: 161 sq. ft
Included: Yes

Heated: Yes
Finished: Yes
Enclosed: Yes
Contiguous: Yes
Permitted: Yes
Wet space: No
Addition: No
Conversion: No

14 Floor 2 - Hall



Max Dimensions: 7'3" x 32'9"
Calculated Area: 233 sq. ft
Included: Yes

Heated: Yes
Finished: Yes
Enclosed: Yes
Contiguous: Yes
Permitted: Yes
Wet space: No
Addition: No
Conversion: No

13613 Inverness Place, Athens, Limestone County, Alabama,
United States, 35611

15 Floor 2 - Sunroom



Max Dimensions: 32'7" x 11'9"
Calculated Area: 384 sq. ft
Included: Yes

Heated: Yes
Finished: Yes
Enclosed: Yes
Contiguous: Yes
Permitted: Yes
Wet space: No
Addition: No
Conversion: No

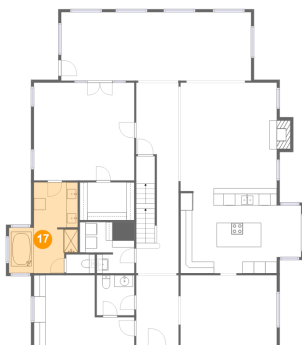
16 Floor 2 - Dining Room



Max Dimensions: 16'7" x 12'2"
Calculated Area: 202 sq. ft
Included: Yes

Heated: Yes
Finished: Yes
Enclosed: Yes
Contiguous: Yes
Permitted: Yes
Wet space: No
Addition: No
Conversion: No

17 Floor 2 - Primary Bath

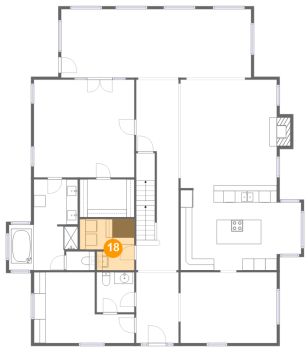


Max Dimensions: 11'10" x 15'7"
Calculated Area: 142 sq. ft
Included: Yes

Heated: Yes
Finished: Yes
Enclosed: Yes
Contiguous: Yes
Permitted: Yes
Wet space: Yes
Addition: No
Conversion: No

13613 Inverness Place, Athens, Limestone County, Alabama,
United States, 35611

18 Floor 2 - Laundry



Max Dimensions: 9'5" x 8'9"
Calculated Area: 71 sq. ft
Included: Yes

Heated: Yes
Finished: Yes
Enclosed: Yes
Contiguous: Yes
Permitted: Yes
Wet space: No
Addition: No
Conversion: No

19 Floor 2 - WC



Max Dimensions: 6'5" x 6'10"
Calculated Area: 45 sq. ft
Included: Yes

Heated: Yes
Finished: Yes
Enclosed: Yes
Contiguous: Yes
Permitted: Yes
Wet space: Yes
Addition: No
Conversion: No

20 Floor 2 - WC

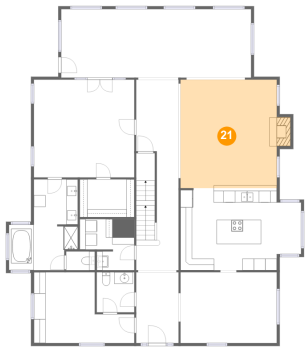


Max Dimensions: 4'11" x 3'3"
Calculated Area: 16 sq. ft
Included: Yes

Heated: Yes
Finished: Yes
Enclosed: Yes
Contiguous: Yes
Permitted: Yes
Wet space: Yes
Addition: No
Conversion: No

13613 Inverness Place, Athens, Limestone County, Alabama,
United States, 35611

21 Floor 2 - Living Room



Max Dimensions: 16'6" x 18'8"
Calculated Area: 320 sq. ft
Included: Yes

Heated: Yes
Finished: Yes
Enclosed: Yes
Contiguous: Yes
Permitted: Yes
Wet space: No
Addition: No
Conversion: No

22 Floor 2 - Eat-in Kitchen



Max Dimensions: 20'9" x 14'1"
Calculated Area: 270 sq. ft
Included: Yes

Heated: Yes
Finished: Yes
Enclosed: Yes
Contiguous: Yes
Permitted: Yes
Wet space: No
Addition: No
Conversion: No

23 Floor 3 - Bath

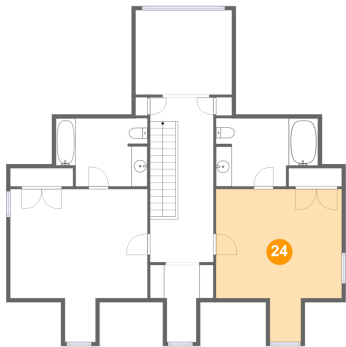


Max Dimensions: 11'6" x 8'6"
Calculated Area: 91 sq. ft
Included: Yes

Heated: Yes
Finished: Yes
Enclosed: Yes
Contiguous: Yes
Permitted: Yes
Wet space: Yes
Addition: No
Conversion: No

13613 Inverness Place, Athens, Limestone County, Alabama,
United States, 35611

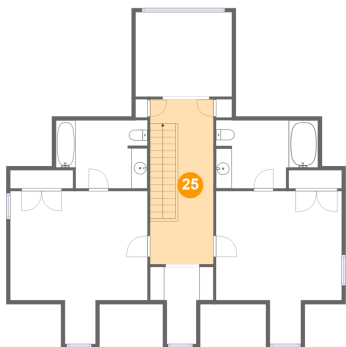
24 Floor 3 - Bedroom



Max Dimensions: 15'10" x 19'3"
Calculated Area: 239 sq. ft
Included: Yes

Heated: Yes
Finished: Yes
Enclosed: Yes
Contiguous: Yes
Permitted: Yes
Wet space: No
Addition: No
Conversion: No

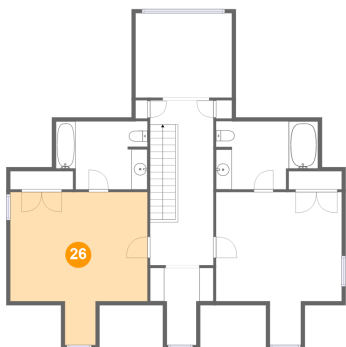
25 Floor 3 - Hall



Max Dimensions: 8'0" x 20'9"
Calculated Area: 166 sq. ft
Included: Yes

Heated: Yes
Finished: Yes
Enclosed: Yes
Contiguous: Yes
Permitted: Yes
Wet space: No
Addition: No
Conversion: No

26 Floor 3 - Bedroom

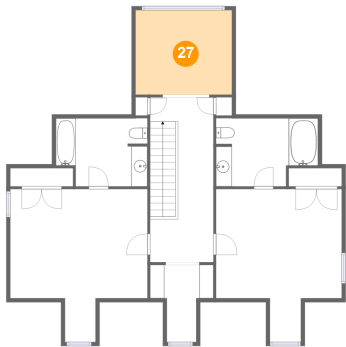


Max Dimensions: 17'3" x 19'3"
Calculated Area: 259 sq. ft
Included: Yes

Heated: Yes
Finished: Yes
Enclosed: Yes
Contiguous: Yes
Permitted: Yes
Wet space: No
Addition: No
Conversion: No

13613 Inverness Place, Athens, Limestone County, Alabama,
United States, 35611

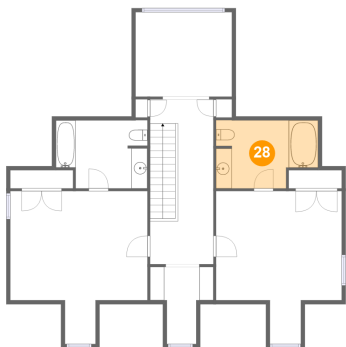
27 Floor 3 - Sitting Room



Max Dimensions: 12'2" x 10'8"
Calculated Area: 129 sq. ft
Included: Yes

Heated: Yes
Finished: Yes
Enclosed: Yes
Contiguous: Yes
Permitted: Yes
Wet space: No
Addition: No
Conversion: No

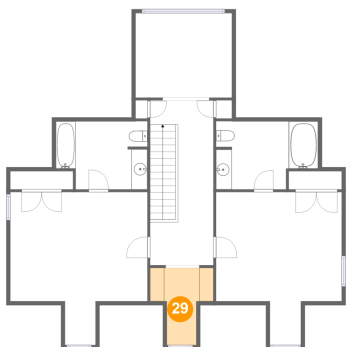
28 Floor 3 - Bath



Max Dimensions: 12'10" x 8'6"
Calculated Area: 99 sq. ft
Included: Yes

Heated: Yes
Finished: Yes
Enclosed: Yes
Contiguous: Yes
Permitted: Yes
Wet space: Yes
Addition: No
Conversion: No

29 Floor 3 - Study Room



Max Dimensions: 8'0" x 9'8"
Calculated Area: 54 sq. ft
Included: Yes

Heated: Yes
Finished: Yes
Enclosed: Yes
Contiguous: Yes
Permitted: Yes
Wet space: No
Addition: No
Conversion: No