

Home report

2057 Tice Drive, Culleoka, Maury County, Tennessee, United States, 38451



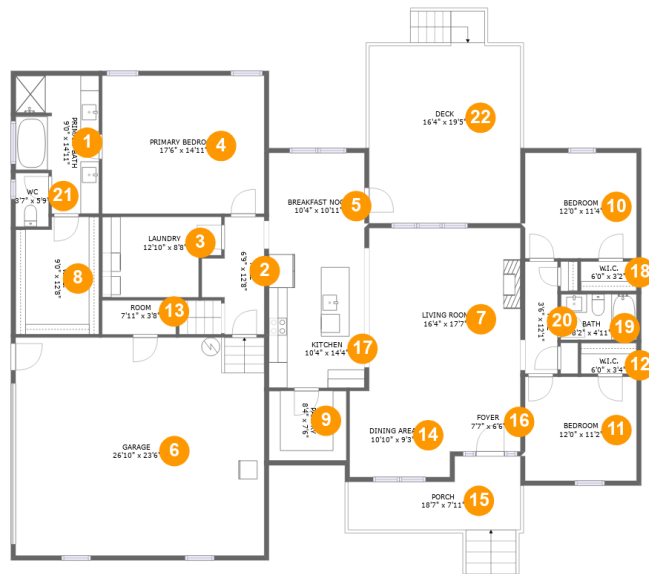
Property summary

1 Garages **4** Bedrooms **2** Bathrooms **0** Half baths

2 Floors **2,513** Gross living area sqft **3,661** Total sqft

Home report

2057 Tice Drive, Culleoka, Maury County, Tennessee, United States, 38451



Room dimensions

Floor 1

Total sqft: 3202 Living area: 2054

#		Dimensions	sqft	Counted as living area
1	Primary Bath	9'0" x 14'11"	114 sq. ft	Yes
2	Hall	6'9" x 12'8"	64 sq. ft	Yes
3	Laundry	12'10" x 8'8"	100 sq. ft	Yes
4	Primary Bedroom	17'6" x 14'11"	260 sq. ft	Yes
5	Breakfast Nook	10'4" x 10'11"	113 sq. ft	Yes
6	Garage	26'10" x 23'6"	630 sq. ft	No
7	Living Room	16'4" x 17'7"	286 sq. ft	Yes
8	W.I.C.	9'0" x 12'8"	109 sq. ft	Yes
9	Pantry	8'4" x 7'6"	63 sq. ft	Yes
10	Bedroom	12'0" x 11'4"	137 sq. ft	Yes
11	Bedroom	12'0" x 11'2"	135 sq. ft	Yes

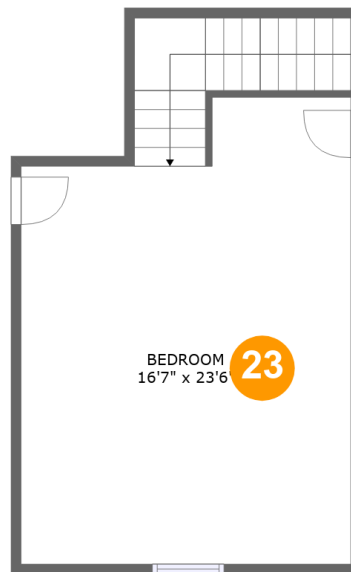
Home report

2057 Tice Drive, Culleoka, Maury County, Tennessee, United States, 38451

#		Dimensions	sqft	Counted as living area
12	W.I.C.	6'0" x 3'4"	20 sq. ft	Yes
13	Room	7'11" x 3'8"	29 sq. ft	No
14	Dining Area	10'10" x 9'3"	100 sq. ft	Yes
15	Porch	18'7" x 7'11"	116 sq. ft	No
16	Foyer	7'7" x 6'6"	50 sq. ft	Yes
17	Kitchen	10'4" x 14'4"	148 sq. ft	Yes
18	W.I.C.	6'0" x 3'2"	19 sq. ft	Yes
19	Bath	8'2" x 4'11"	40 sq. ft	Yes
20	Hall	3'6" x 12'1"	42 sq. ft	Yes
21	WC	3'7" x 5'9"	21 sq. ft	Yes
22	Deck	16'4" x 19'5"	340 sq. ft	No

Home report

2057 Tice Drive, Culleoka, Maury County, Tennessee, United States, 38451



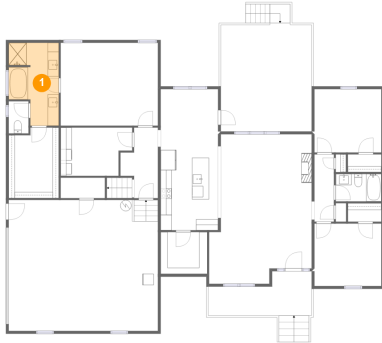
Room dimensions

Floor 2

Total sqft: 459 Living area: 459

#		Dimensions	sqft	Counted as living area
23	Bedroom	16'7" x 23'6"	411 sq. ft	Yes

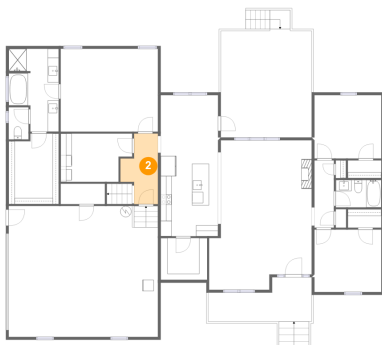
1 Floor 1 - Primary Bath



Dimensions: 9'0" x 14'11"
Area: 114 sq. ft
Counted as living area: Yes

Heated: Yes
Finished: Yes
Enclosed: Yes
Contiguous: Yes
Permitted: Yes
Wet space: Yes
Addition: No
Conversion: No

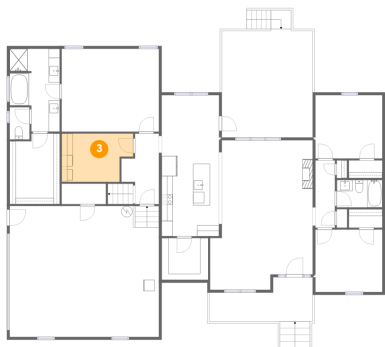
2 Floor 1 - Hall



Dimensions: 6'9" x 12'8"
Area: 64 sq. ft
Counted as living area: Yes

Heated: Yes
Finished: Yes
Enclosed: Yes
Contiguous: Yes
Permitted: Yes
Wet space: No
Addition: No
Conversion: No

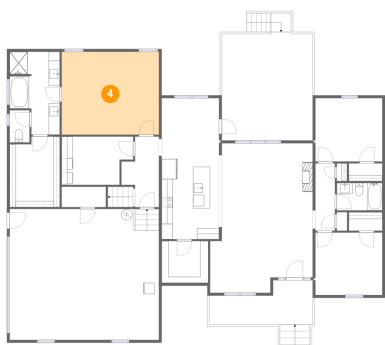
3 Floor 1 - Laundry



Dimensions: 12'10" x 8'8"
Area: 100 sq. ft
Counted as living area: Yes

Heated: Yes
Finished: Yes
Enclosed: Yes
Contiguous: Yes
Permitted: Yes
Wet space: No
Addition: No
Conversion: No

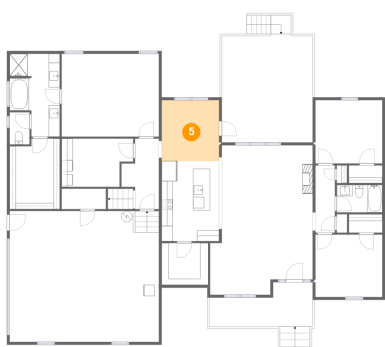
4 Floor 1 - Primary Bedroom



Dimensions: 17'6" x 14'11"
Area: 260 sq. ft
Counted as living area: Yes

Heated: Yes
Finished: Yes
Enclosed: Yes
Contiguous: Yes
Permitted: Yes
Wet space: No
Addition: No
Conversion: No

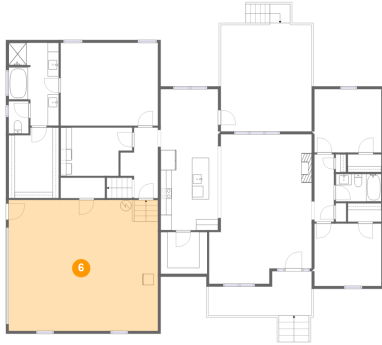
5 Floor 1 - Breakfast Nook



Dimensions: 10'4" x 10'11"
Area: 113 sq. ft
Counted as living area: Yes

Heated: Yes
Finished: Yes
Enclosed: Yes
Contiguous: Yes
Permitted: Yes
Wet space: No
Addition: No
Conversion: No

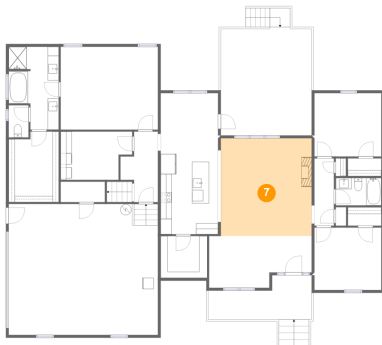
6 Floor 1 - Garage



Dimensions: 26'10" x 23'6"
Area: 630 sq. ft
Counted as living area: No

Heated: No
Finished: No
Enclosed: Yes
Contiguous: Yes
Permitted: Yes
Wet space: No
Addition: No
Conversion: No

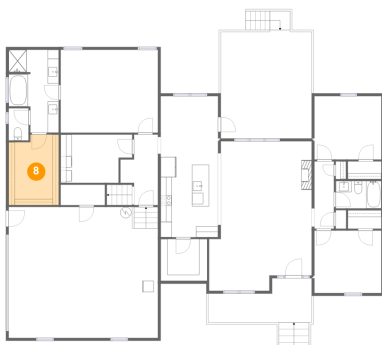
7 Floor 1 - Living Room



Dimensions: 16'4" x 17'7"
Area: 286 sq. ft
Counted as living area: Yes

Heated: Yes
Finished: Yes
Enclosed: Yes
Contiguous: Yes
Permitted: Yes
Wet space: No
Addition: No
Conversion: No

8 Floor 1 - W.I.C.



Dimensions: 9'0" x 12'8"
Area: 109 sq. ft
Counted as living area: Yes

Heated: Yes
Finished: Yes
Enclosed: Yes
Contiguous: Yes
Permitted: Yes
Wet space: No
Addition: No
Conversion: No

9 Floor 1 - Pantry



Dimensions: 8'4" x 7'6"
Area: 63 sq. ft
Counted as living area: Yes

Heated: Yes
Finished: Yes
Enclosed: Yes
Contiguous: Yes
Permitted: Yes
Wet space: No
Addition: No
Conversion: No

10 Floor 1 - Bedroom



Dimensions: 12'0" x 11'4"
Area: 137 sq. ft
Counted as living area: Yes

Heated: Yes
Finished: Yes
Enclosed: Yes
Contiguous: Yes
Permitted: Yes
Wet space: No
Addition: No
Conversion: No

11 Floor 1 - Bedroom



Dimensions: 12'0" x 11'2"
Area: 135 sq. ft
Counted as living area: Yes

Heated: Yes
Finished: Yes
Enclosed: Yes
Contiguous: Yes
Permitted: Yes
Wet space: No
Addition: No
Conversion: No

12 Floor 1 - W.I.C.



Dimensions: 6'0" x 3'4"
Area: 20 sq. ft
Counted as living area: Yes

Heated: Yes
Finished: Yes
Enclosed: Yes
Contiguous: Yes
Permitted: Yes
Wet space: No
Addition: No
Conversion: No

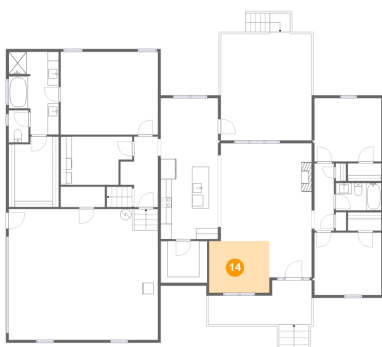
13 Floor 1 - Room



Dimensions: 7'11" x 3'8"
Area: 29 sq. ft
Counted as living area: No

Heated: Yes
Finished: Yes
Enclosed: Yes
Contiguous: No
Permitted: Yes
Wet space: No
Addition: No
Conversion: No

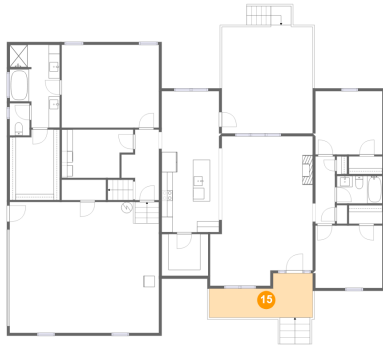
14 Floor 1 - Dining Area



Dimensions: 10'10" x 9'3"
Area: 100 sq. ft
Counted as living area: Yes

Heated: Yes
Finished: Yes
Enclosed: Yes
Contiguous: Yes
Permitted: Yes
Wet space: No
Addition: No
Conversion: No

15 Floor 1 - Porch



Dimensions: 18'7" x 7'11"
Area: 116 sq. ft
Counted as living area: No

Heated: No
Finished: Yes
Enclosed: No
Contiguous: Yes
Permitted: Yes
Wet space: No
Addition: No
Conversion: No

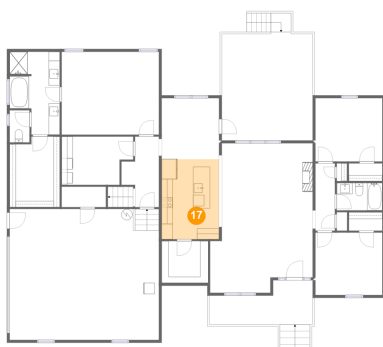
16 Floor 1 - Foyer



Dimensions: 7'7" x 6'6"
Area: 50 sq. ft
Counted as living area: Yes

Heated: Yes
Finished: Yes
Enclosed: Yes
Contiguous: Yes
Permitted: Yes
Wet space: No
Addition: No
Conversion: No

17 Floor 1 - Kitchen



Dimensions: 10'4" x 14'4"
Area: 148 sq. ft
Counted as living area: Yes

Heated: Yes
Finished: Yes
Enclosed: Yes
Contiguous: Yes
Permitted: Yes
Wet space: No
Addition: No
Conversion: No

18 Floor 1 - W.I.C.



Dimensions: 6'0" x 3'2"
Area: 19 sq. ft
Counted as living area: Yes

Heated: Yes
Finished: Yes
Enclosed: Yes
Contiguous: Yes
Permitted: Yes
Wet space: No
Addition: No
Conversion: No

19 Floor 1 - Bath



Dimensions: 8'2" x 4'11"
Area: 40 sq. ft
Counted as living area: Yes

Heated: Yes
Finished: Yes
Enclosed: Yes
Contiguous: Yes
Permitted: Yes
Wet space: Yes
Addition: No
Conversion: No

20 Floor 1 - Hall



Dimensions: 3'6" x 12'1"
Area: 42 sq. ft
Counted as living area: Yes

Heated: Yes
Finished: Yes
Enclosed: Yes
Contiguous: Yes
Permitted: Yes
Wet space: No
Addition: No
Conversion: No

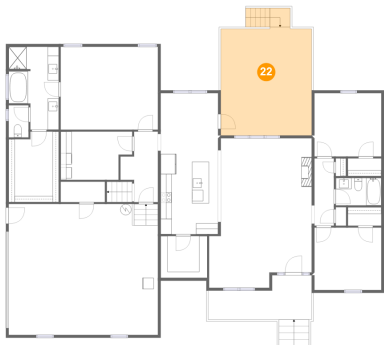
21 Floor 1 - WC



Dimensions: 3'7" x 5'9"
Area: 21 sq. ft
Counted as living area: Yes

Heated: Yes
Finished: Yes
Enclosed: Yes
Contiguous: Yes
Permitted: Yes
Wet space: Yes
Addition: No
Conversion: No

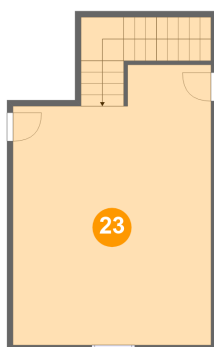
22 Floor 1 - Deck



Dimensions: 16'4" x 19'5"
Area: 340 sq. ft
Counted as living area: No

Heated: No
Finished: Yes
Enclosed: No
Contiguous: Yes
Permitted: Yes
Wet space: No
Addition: No
Conversion: No

23 Floor 2 - Bedroom



Dimensions: 16'7" x 23'6"
Area: 411 sq. ft
Counted as living area: Yes

Heated: Yes
Finished: Yes
Enclosed: Yes
Contiguous: Yes
Permitted: Yes
Wet space: No
Addition: No
Conversion: No