



Home report


1253 Oakwood Pl, Loganville, GA, US




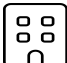
Property summary


 **2** Garages


 **3** Bedrooms

 **4** Bathrooms

 **0** Half baths

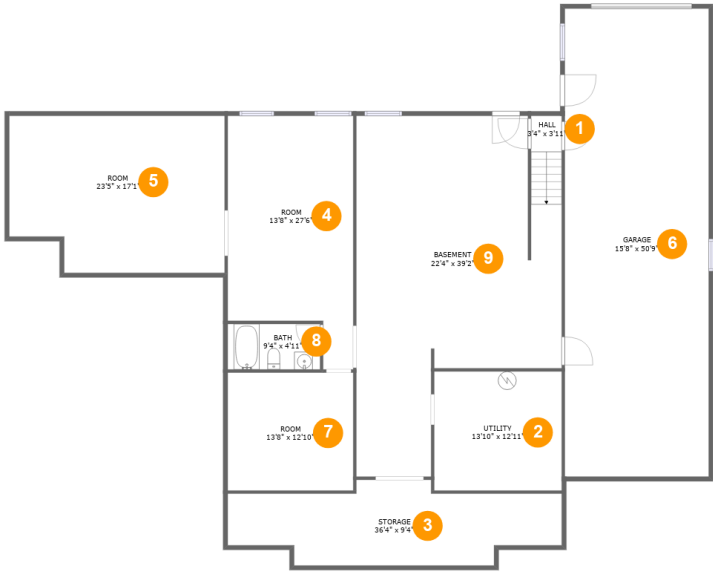
 **2** Floors

 **2,814** Gross living area sqft

 **6,912** Total sqft

Home report

1253 Oakwood Pl, Loganville, GA, US



Room dimensions

Floor 1 Total sqft: 3071 Living area: 0

#		Dimensions	sqft	Counted as living area
1	Hall	3'4" x 3'11"	19 sq. ft	No
2	Utility	13'10" x 12'11"	180 sq. ft	No
3	Storage	36'4" x 9'4"	264 sq. ft	No
4	Room	13'8" x 27'6"	321 sq. ft	No
5	Room	23'5" x 17'1"	376 sq. ft	No
6	Garage	15'8" x 50'9"	796 sq. ft	No
7	Room	13'8" x 12'10"	175 sq. ft	No
8	Bath	9'4" x 4'11"	50 sq. ft	No
9	Basement	22'4" x 39'2"	683 sq. ft	No

Home report

1253 Oakwood Pl, Loganville, GA, US



Room dimensions

Floor 2 Total sqft: 3841 Living area: 2814

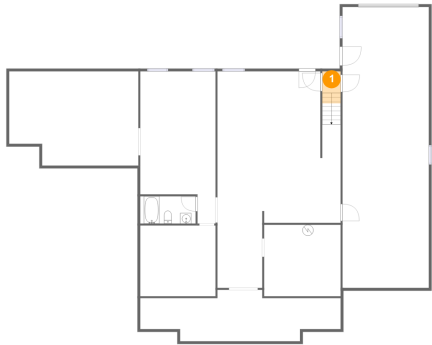
#		Dimensions	sqft	Counted as living area
10	Hall	7'7" x 13'9"	64 sq. ft	Yes
11	Bath	4'11" x 6'4"	31 sq. ft	Yes
12	Primary Bath	9'7" x 12'5"	119 sq. ft	Yes
13	Hall	3'4" x 3'9"	13 sq. ft	Yes
14	Living Room	18'6" x 25'11"	490 sq. ft	Yes
15	Foyer	8'0" x 13'4"	107 sq. ft	Yes
16	Bath	8'0" x 5'1"	41 sq. ft	Yes
17	Sitting Room	13'6" x 13'0"	172 sq. ft	Yes
18	WC	5'9" x 2'11"	17 sq. ft	Yes
19	Screened Porch	13'8" x 11'11"	164 sq. ft	No
20	Breakfast Nook	12'2" x 11'10"	144 sq. ft	Yes

Home report

1253 Oakwood Pl, Loganville, GA, US

#		Dimensions	sqft	Counted as living area
21	Bedroom	14'6" x 12'3"	160 sq. ft	Yes
22	Bedroom	13'3" x 14'0"	182 sq. ft	Yes
23	Primary Bedroom	15'8" x 19'8"	307 sq. ft	Yes
24	Laundry	9'10" x 7'10"	78 sq. ft	Yes
25	W.I.C.	5'9" x 9'3"	53 sq. ft	Yes
26	Bath	6'6" x 6'4"	41 sq. ft	Yes
27	Deck	21'10" x 12'1"	296 sq. ft	No
28	Garage	23'5" x 24'9"	524 sq. ft	No
29	Hall	9'10" x 9'0"	54 sq. ft	Yes
30	Dining Room	13'4" x 13'3"	177 sq. ft	Yes
31	Pantry	5'9" x 5'6"	29 sq. ft	Yes
32	Kitchen	13'9" x 15'10"	182 sq. ft	Yes

1 Floor 1 - Hall



Dimensions: 3'4" x 3'11"
Area: 19 sq. ft
Counted as living area: No

Heated: Yes
Finished: Yes
Enclosed: Yes
Contiguous: No
Permitted: Yes
Wet space: No
Addition: No
Conversion: No

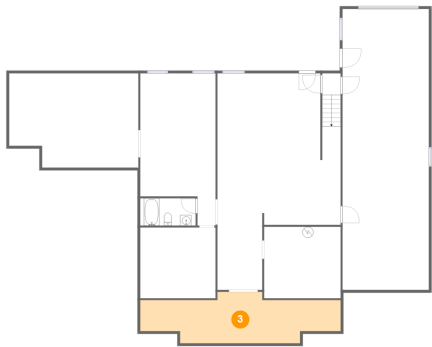
2 Floor 1 - Utility



Dimensions: 13'10" x 12'11"
Area: 180 sq. ft
Counted as living area: No

Heated: Yes
Finished: No
Enclosed: Yes
Contiguous: Yes
Permitted: Yes
Wet space: No
Addition: No
Conversion: No

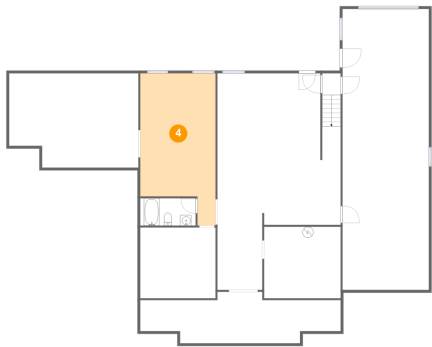
3 Floor 1 - Storage



Dimensions: 36'4" x 9'4"
Area: 264 sq. ft
Counted as living area: No

Heated: No
Finished: No
Enclosed: No
Contiguous: Yes
Permitted: Yes
Wet space: No
Addition: No
Conversion: No

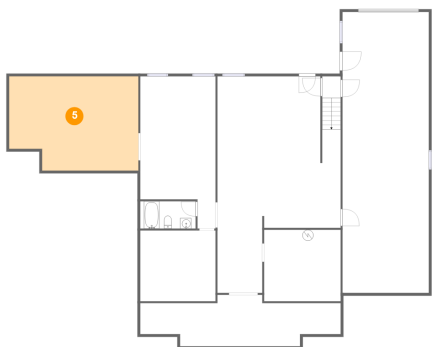
4 Floor 1 - Room



Dimensions: 13'8" x 27'6"
Area: 321 sq. ft
Counted as living area: No

Heated: Yes
Finished: No
Enclosed: Yes
Contiguous: Yes
Permitted: Yes
Wet space: No
Addition: No
Conversion: No

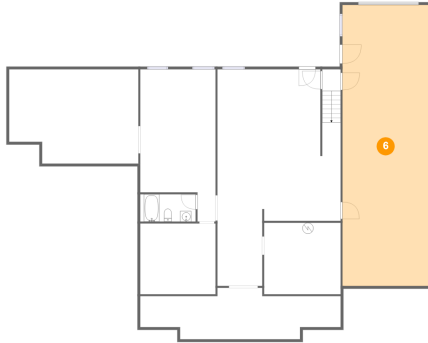
5 Floor 1 - Room



Dimensions: 23'5" x 17'1"
Area: 376 sq. ft
Counted as living area: No

Heated: Yes
Finished: No
Enclosed: Yes
Contiguous: Yes
Permitted: Yes
Wet space: No
Addition: No
Conversion: No

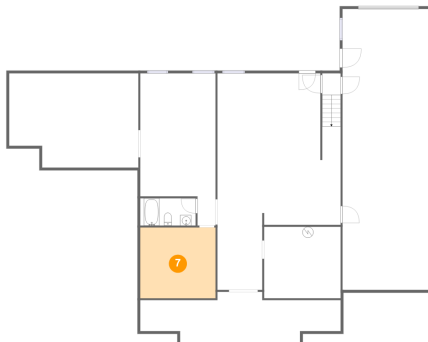
6 Floor 1 - Garage



Dimensions: 15'8" x 50'9"
Area: 796 sq. ft
Counted as living area: No

Heated: No
Finished: No
Enclosed: Yes
Contiguous: Yes
Permitted: Yes
Wet space: No
Addition: No
Conversion: No

7 Floor 1 - Room



Dimensions: 13'8" x 12'10"
Area: 175 sq. ft
Counted as living area: No

Heated: Yes
Finished: No
Enclosed: Yes
Contiguous: Yes
Permitted: Yes
Wet space: No
Addition: No
Conversion: No

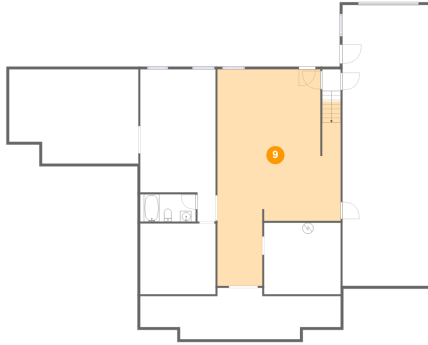
8 Floor 1 - Bath



Dimensions: 9'4" x 4'11"
Area: 50 sq. ft
Counted as living area: No

Heated: Yes
Finished: Yes
Enclosed: Yes
Contiguous: No
Permitted: Yes
Wet space: Yes
Addition: No
Conversion: No

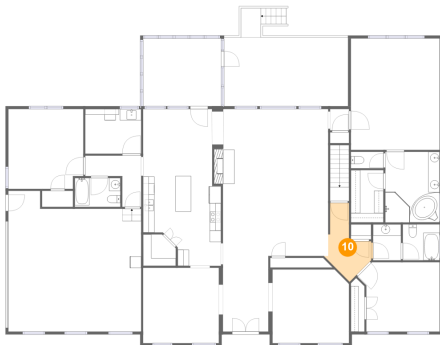
9 Floor 1 - Basement



Dimensions: 22'4" x 39'2"
Area: 683 sq. ft
Counted as living area: No

Heated: Yes
Finished: No
Enclosed: Yes
Contiguous: Yes
Permitted: Yes
Wet space: No
Addition: No
Conversion: No

10 Floor 2 - Hall



Dimensions: 7'7" x 13'9"
Area: 64 sq. ft
Counted as living area: Yes

Heated: Yes
Finished: Yes
Enclosed: Yes
Contiguous: Yes
Permitted: Yes
Wet space: No
Addition: No
Conversion: No

11 Floor 2 - Bath



Dimensions: 4'11" x 6'4"
Area: 31 sq. ft
Counted as living area: Yes

Heated: Yes
Finished: Yes
Enclosed: Yes
Contiguous: Yes
Permitted: Yes
Wet space: Yes
Addition: No
Conversion: No

12 Floor 2 - Primary Bath



Dimensions: 9'7" x 12'5"
Area: 119 sq. ft
Counted as living area: Yes

Heated: Yes
Finished: Yes
Enclosed: Yes
Contiguous: Yes
Permitted: Yes
Wet space: Yes
Addition: No
Conversion: No

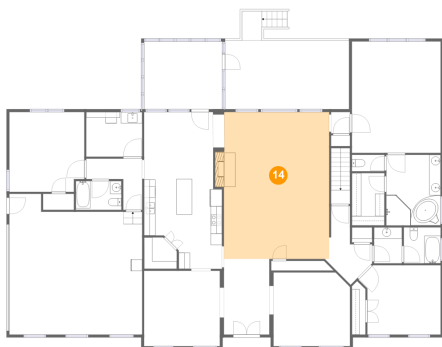
13 Floor 2 - Hall



Dimensions: 3'4" x 3'9"
Area: 13 sq. ft
Counted as living area: Yes

Heated: Yes
Finished: Yes
Enclosed: Yes
Contiguous: Yes
Permitted: Yes
Wet space: No
Addition: No
Conversion: No

14 Floor 2 - Living Room



Dimensions: 18'6" x 25'11"
Area: 490 sq. ft
Counted as living area: Yes

Heated: Yes
Finished: Yes
Enclosed: Yes
Contiguous: Yes
Permitted: Yes
Wet space: No
Addition: No
Conversion: No

15 Floor 2 - Foyer



Dimensions: 8'0" x 13'4"
Area: 107 sq. ft
Counted as living area: Yes

Heated: Yes
Finished: Yes
Enclosed: Yes
Contiguous: Yes
Permitted: Yes
Wet space: No
Addition: No
Conversion: No

16 Floor 2 - Bath



Dimensions: 8'0" x 5'1"
Area: 41 sq. ft
Counted as living area: Yes

Heated: Yes
Finished: Yes
Enclosed: Yes
Contiguous: Yes
Permitted: Yes
Wet space: Yes
Addition: No
Conversion: No

17 Floor 2 - Sitting Room



Dimensions: 13'6" x 13'0"
Area: 172 sq. ft
Counted as living area: Yes

Heated: Yes
Finished: Yes
Enclosed: Yes
Contiguous: Yes
Permitted: Yes
Wet space: No
Addition: No
Conversion: No

18 Floor 2 - WC



Dimensions: 5'9" x 2'11"
Area: 17 sq. ft
Counted as living area: Yes

Heated: Yes
Finished: Yes
Enclosed: Yes
Contiguous: Yes
Permitted: Yes
Wet space: Yes
Addition: No
Conversion: No

19 Floor 2 - Screened Porch



Dimensions: 13'8" x 11'11"
Area: 164 sq. ft
Counted as living area: No

Heated: No
Finished: Yes
Enclosed: No
Contiguous: Yes
Permitted: Yes
Wet space: No
Addition: No
Conversion: No

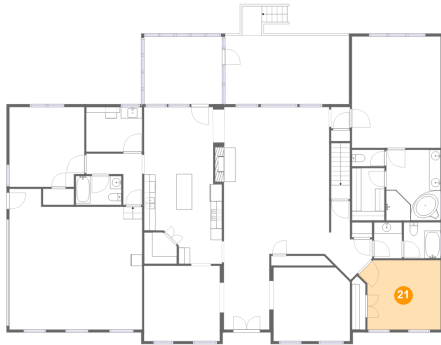
20 Floor 2 - Breakfast Nook



Dimensions: 12'2" x 11'10"
Area: 144 sq. ft
Counted as living area: Yes

Heated: Yes
Finished: Yes
Enclosed: Yes
Contiguous: Yes
Permitted: Yes
Wet space: No
Addition: No
Conversion: No

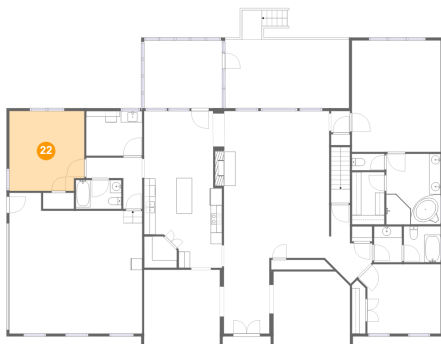
21 Floor 2 - Bedroom



Dimensions: 14'6" x 12'3"
Area: 160 sq. ft
Counted as living area: Yes

Heated: Yes
Finished: Yes
Enclosed: Yes
Contiguous: Yes
Permitted: Yes
Wet space: No
Addition: No
Conversion: No

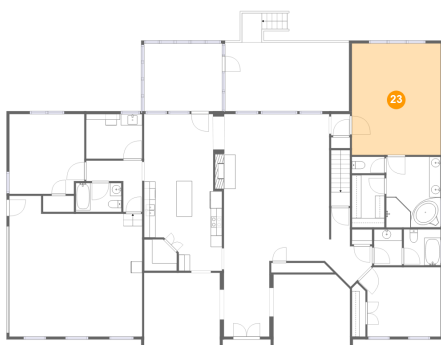
22 Floor 2 - Bedroom



Dimensions: 13'3" x 14'0"
Area: 182 sq. ft
Counted as living area: Yes

Heated: Yes
Finished: Yes
Enclosed: Yes
Contiguous: Yes
Permitted: Yes
Wet space: No
Addition: No
Conversion: No

23 Floor 2 - Primary Bedroom



Dimensions: 15'8" x 19'8"
Area: 307 sq. ft
Counted as living area: Yes

Heated: Yes
Finished: Yes
Enclosed: Yes
Contiguous: Yes
Permitted: Yes
Wet space: No
Addition: No
Conversion: No

24 Floor 2 - Laundry



Dimensions: 9'10" x 7'10"
Area: 78 sq. ft
Counted as living area: Yes

Heated: Yes
Finished: Yes
Enclosed: Yes
Contiguous: Yes
Permitted: Yes
Wet space: No
Addition: No
Conversion: No

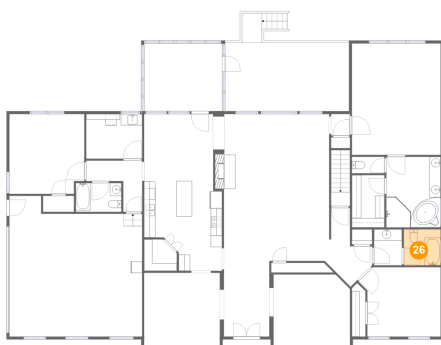
25 Floor 2 - W.I.C.



Dimensions: 5'9" x 9'3"
Area: 53 sq. ft
Counted as living area: Yes

Heated: Yes
Finished: Yes
Enclosed: Yes
Contiguous: Yes
Permitted: Yes
Wet space: No
Addition: No
Conversion: No

26 Floor 2 - Bath



Dimensions: 6'6" x 6'4"
Area: 41 sq. ft
Counted as living area: Yes

Heated: Yes
Finished: Yes
Enclosed: Yes
Contiguous: Yes
Permitted: Yes
Wet space: Yes
Addition: No
Conversion: No

27 Floor 2 - Deck



Dimensions: 21'10" x 12'1"
Area: 296 sq. ft
Counted as living area: No

Heated: No
Finished: Yes
Enclosed: No
Contiguous: Yes
Permitted: Yes
Wet space: No
Addition: No
Conversion: No

28 Floor 2 - Garage



Dimensions: 23'5" x 24'9"
Area: 524 sq. ft
Counted as living area: No

Heated: No
Finished: No
Enclosed: Yes
Contiguous: Yes
Permitted: Yes
Wet space: No
Addition: No
Conversion: No

29 Floor 2 - Hall



Dimensions: 9'10" x 9'0"
Area: 54 sq. ft
Counted as living area: Yes

Heated: Yes
Finished: Yes
Enclosed: Yes
Contiguous: Yes
Permitted: Yes
Wet space: No
Addition: No
Conversion: No

30 Floor 2 - Dining Room



Dimensions: 13'4" x 13'3"
Area: 177 sq. ft
Counted as living area: Yes

Heated: Yes
Finished: Yes
Enclosed: Yes
Contiguous: Yes
Permitted: Yes
Wet space: No
Addition: No
Conversion: No

31 Floor 2 - Pantry



Dimensions: 5'9" x 5'6"
Area: 29 sq. ft
Counted as living area: Yes

Heated: Yes
Finished: Yes
Enclosed: Yes
Contiguous: Yes
Permitted: Yes
Wet space: No
Addition: No
Conversion: No

32 Floor 2 - Kitchen



Dimensions: 13'9" x 15'10"
Area: 182 sq. ft
Counted as living area: Yes

Heated: Yes
Finished: Yes
Enclosed: Yes
Contiguous: Yes
Permitted: Yes
Wet space: No
Addition: No
Conversion: No