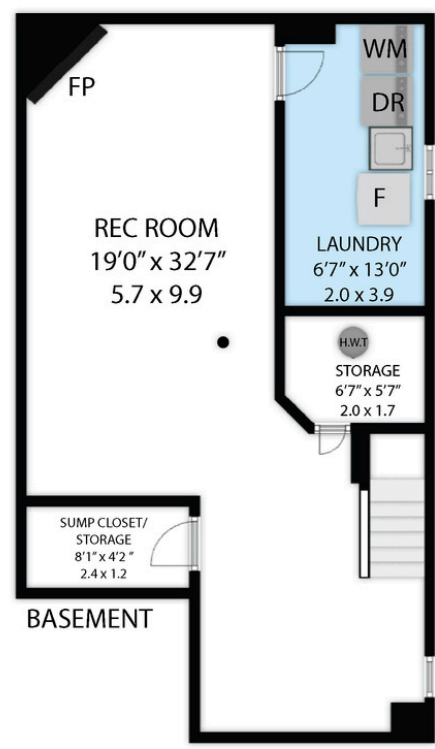
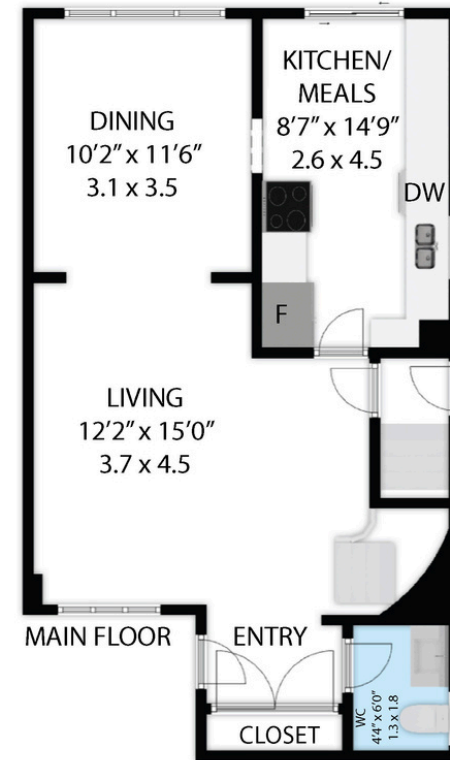


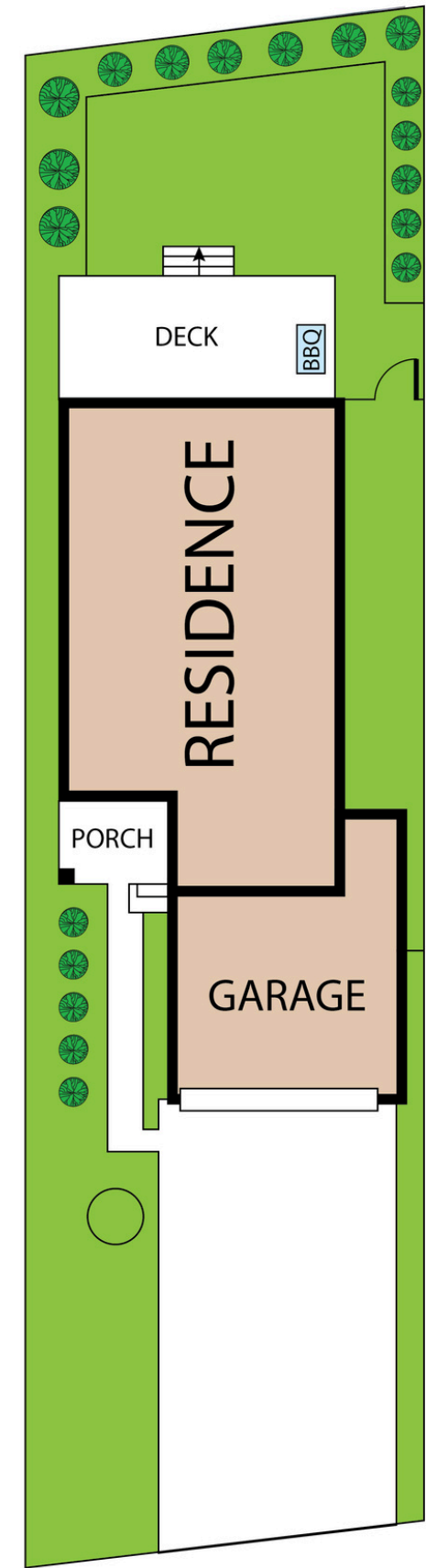
SECOND FLOOR



BASEMENT



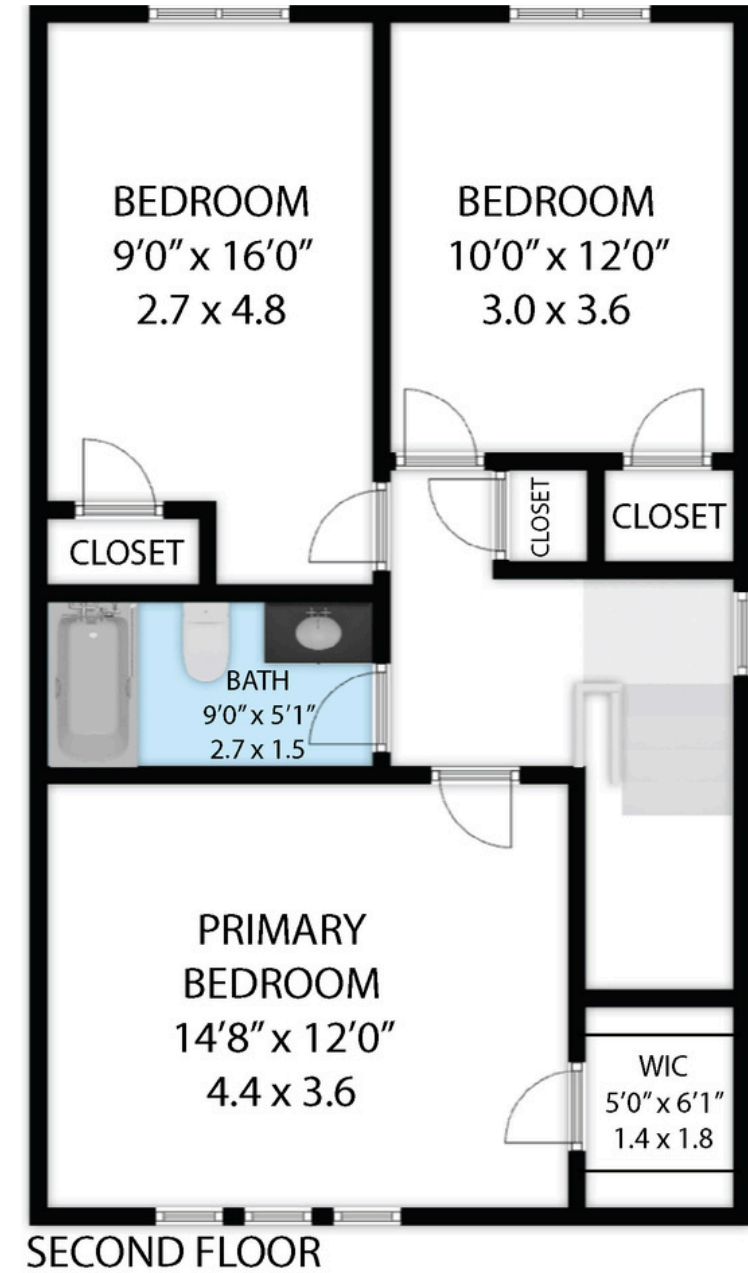
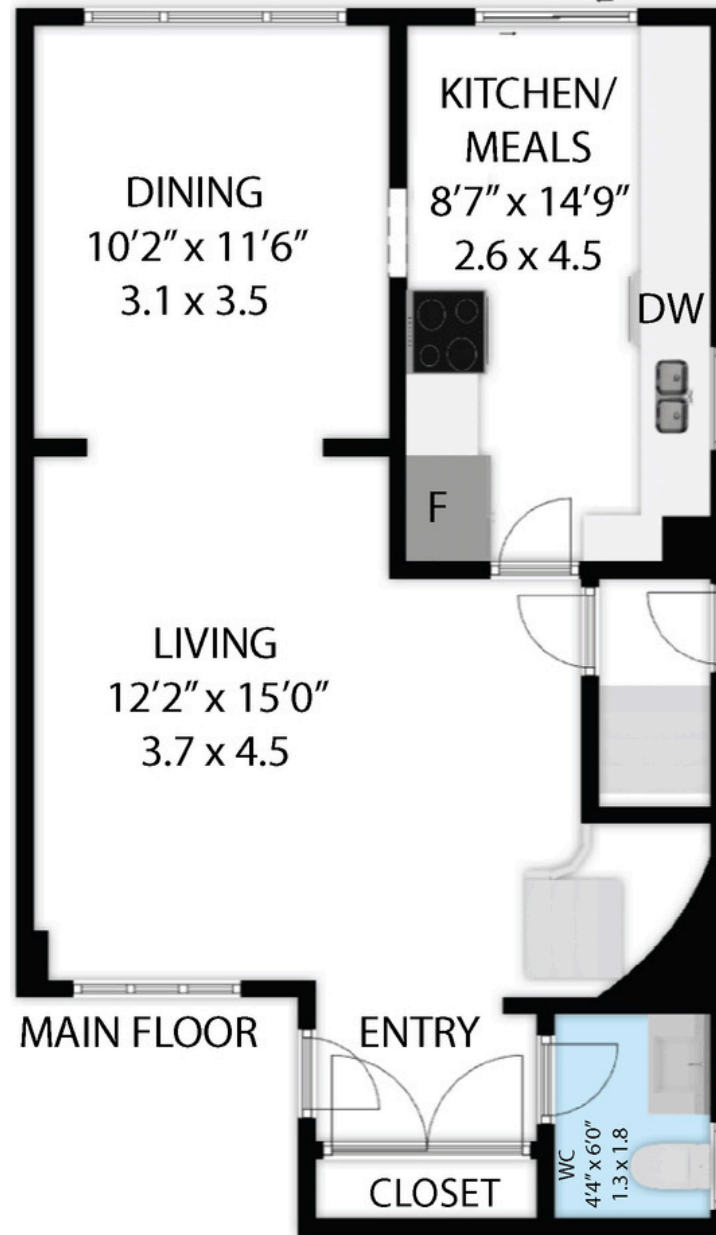
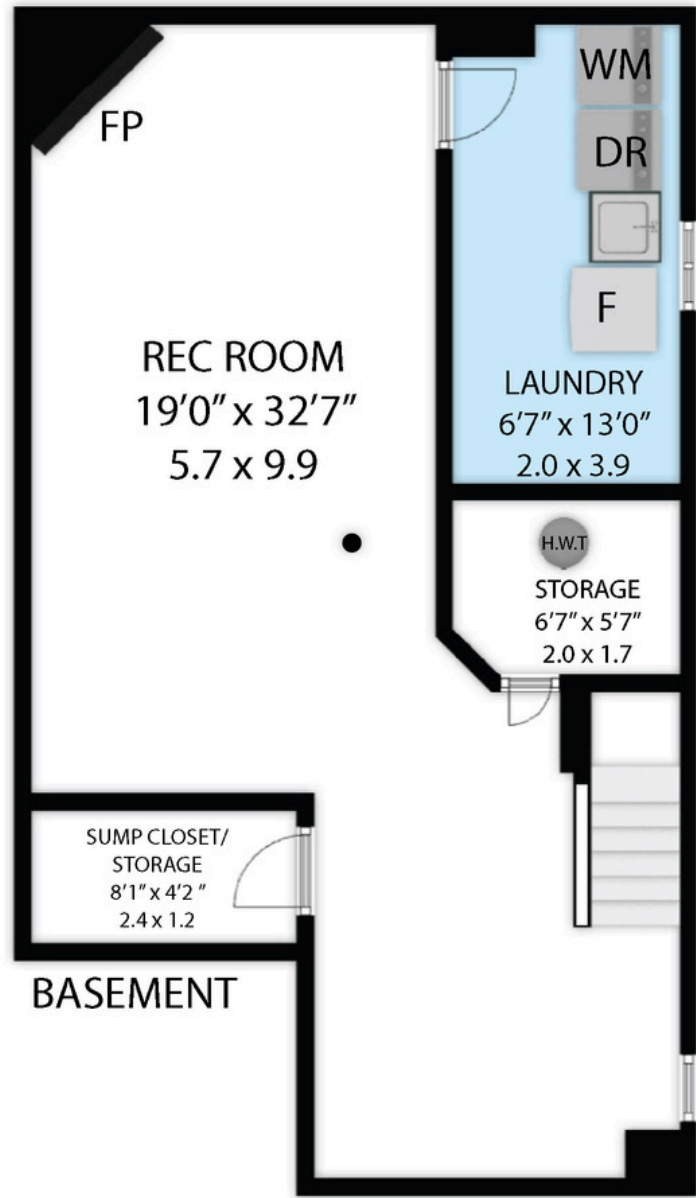
MAIN FLOOR



3371 Columbine Crescent
 TOTAL APPROX. FLOOR AREA 1,940 SQ.FT - 179 SQ.M

Whilst every attempt has been made to ensure the accuracy of the floor plan contained here, measurements of doors, windows, rooms and any other items are approximate and no responsibility is taken for any error, omission, or misstatement. This plan is for illustrative purposes only and should be used as such by any prospective purchaser.

BASEMENT	:	606 SQ.FT - 56 SQ.M
MAIN FLOOR	:	639 SQ.FT - 59 SQ.M
SECOND FLOOR	:	695 SQ.FT - 64 SQ.M
TOTAL AREA	:	1,940 SQ.FT - 179 SQ.M

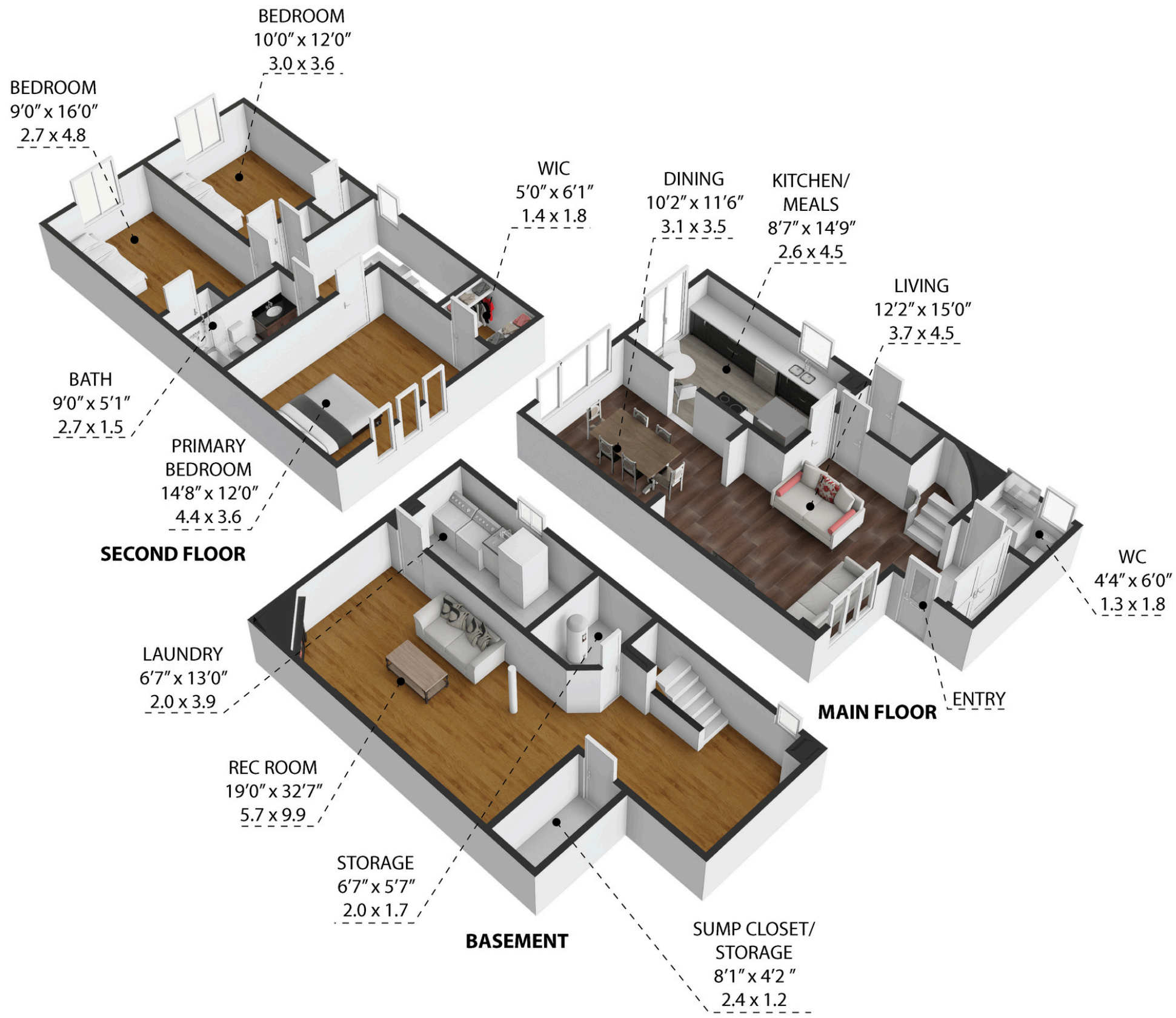


3371 Columbine Crescent

TOTAL APPROX. FLOOR AREA 1,940 SQ.FT - 179 SQ.M

Whilst every attempt has been made to ensure the accuracy of the floor plan contained here, measurements of doors, windows, rooms and any other items are approximate and no responsibility is taken for any error, omission, or misstatement. This plan is for illustrative purposes only and should be used as such by any prospective purchaser.

BASEMENT	:	606 SQ.FT - 56 SQ.M
MAIN FLOOR	:	639 SQ.FT - 59 SQ.M
SECOND FLOOR	:	695 SQ.FT - 64 SQ.M
TOTAL AREA	:	1,940 SQ.FT - 179 SQ.M



3371 Columbine Crescent

TOTAL APPROX. FLOOR AREA 1,940 SQ.FT - 179 SQ.M

Whilst every attempt has been made to ensure the accuracy of the floor plan contained here, measurements of doors, windows, rooms and any other items are approximate and no responsibility is taken for any error, omission, or misstatement. This plan is for illustrative purposes only and should be used as such by any prospective purchaser.

BASEMENT	:	606 SQ.FT - 56 SQ.M
MAIN FLOOR	:	639 SQ.FT - 59 SQ.M
SECOND FLOOR	:	695 SQ.FT - 64 SQ.M
TOTAL AREA	:	1,940 SQ.FT - 179 SQ.M