



410 8th Street Southeast, Belmont, Roanoke, Roanoke, Virginia, United States, 24013



Property summary


 **0** Garages

 **4** Bedrooms

 **3** Bathrooms

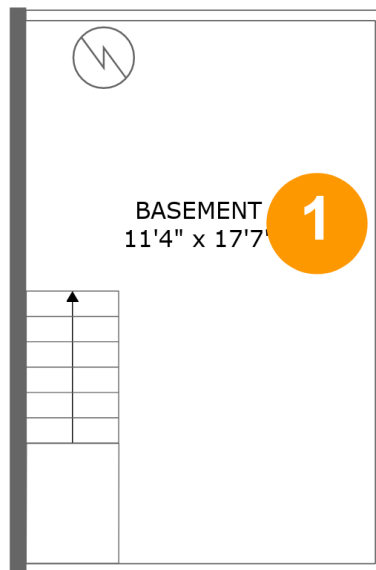
 **0** Half baths

 **3** Floors

 **2,138** Gross living area sqft

 **2,742** Total sqft

**410 8th Street Southeast, Belmont, Roanoke,
Roanoke, Virginia, United States, 24013**



Room dimensions

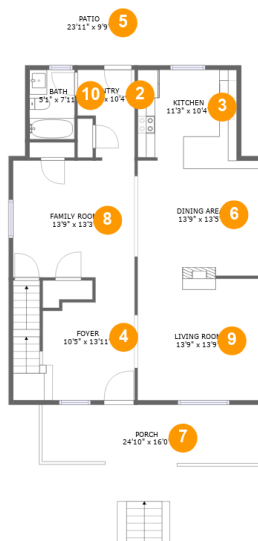
Floor 1

Total sqft: 209

Living area: 0

#		Dimensions	sqft	Counted as living area
1	Basement	11'4" x 17'7"	200 sq. ft	No

410 8th Street Southeast, Belmont, Roanoke, Roanoke, Virginia, United States, 24013



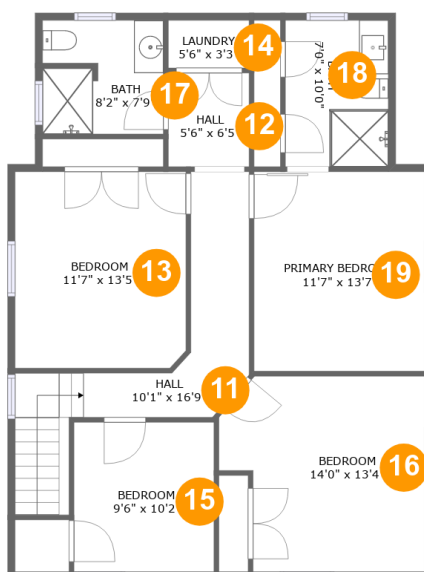
Room dimensions

Floor 2

Total sqft: 1464 Living area: 1069

#		Dimensions	sqft	Counted as living area
2	Entry	6'6" x 10'4"	56 sq. ft	Yes
3	Kitchen	11'3" x 10'4"	115 sq. ft	Yes
4	Entry	10'5" x 13'11"	170 sq. ft	Yes
5	Outdoor	23'11" x 9'9"	153 sq. ft	No
6	Dining Room	13'9" x 13'5"	183 sq. ft	Yes
7	Outdoor	24'10" x 16'0"	244 sq. ft	No
8	Living Room	13'9" x 13'3"	184 sq. ft	Yes
9	Living Room	13'9" x 13'9"	190 sq. ft	Yes
10	Bath	5'1" x 7'11"	40 sq. ft	Yes

410 8th Street Southeast, Belmont, Roanoke, Roanoke, Virginia, United States, 24013



Room dimensions

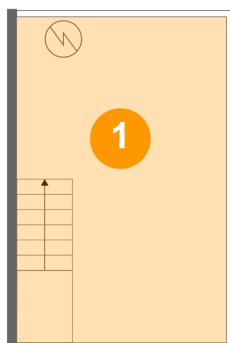
Floor 3

Total sqft: 1069 Living area: 1069

#		Dimensions	sqft	Counted as living area
11	Hall	10'1" x 16'9"	124 sq. ft	Yes
12	Hall	5'6" x 6'5"	35 sq. ft	Yes
13	Bedroom	11'7" x 13'5"	155 sq. ft	Yes
14	Utility	5'6" x 3'3"	18 sq. ft	Yes
15	Bedroom	9'6" x 10'2"	97 sq. ft	Yes
16	Bedroom	14'0" x 13'4"	167 sq. ft	Yes
17	Bath	8'2" x 7'9"	62 sq. ft	Yes
18	Bath	7'0" x 10'0"	70 sq. ft	Yes
19	Bedroom	11'7" x 13'7"	158 sq. ft	Yes

410 8th Street Southeast, Belmont, Roanoke, Roanoke, Virginia, United States, 24013

1 Floor 1 - Basement



Dimensions: 11'4" x 17'7"
Area: 200 sq. ft
Counted as living area: No

Heated: Yes
Finished: Yes
Enclosed: Yes
Contiguous: Yes
Permitted: Yes
Wet space: No
Addition: No
Conversion: No

2 Floor 2 - Entry



Dimensions: 6'6" x 10'4"
Area: 56 sq. ft
Counted as living area: Yes

Heated: Yes
Finished: Yes
Enclosed: Yes
Contiguous: Yes
Permitted: Yes
Wet space: No
Addition: No
Conversion: No

410 8th Street Southeast, Belmont, Roanoke, Roanoke, Virginia, United States, 24013

3 Floor 2 - Kitchen



Dimensions: 11'3" x 10'4"
Area: 115 sq. ft
Counted as living area: Yes

Heated: Yes
Finished: Yes
Enclosed: Yes
Contiguous: Yes
Permitted: Yes
Wet space: No
Addition: No
Conversion: No

4 Floor 2 - Entry



Dimensions: 10'5" x 13'11"
Area: 170 sq. ft
Counted as living area: Yes

Heated: Yes
Finished: Yes
Enclosed: Yes
Contiguous: Yes
Permitted: Yes
Wet space: No
Addition: No
Conversion: No

5 Floor 2 - Outdoor



Dimensions: 23'11" x 9'9"
Area: 153 sq. ft
Counted as living area: No

Heated: No
Finished: Yes
Enclosed: No
Contiguous: Yes
Permitted: Yes
Wet space: No
Addition: No
Conversion: No

410 8th Street Southeast, Belmont, Roanoke, Roanoke, Virginia, United States, 24013

6 Floor 2 - Dining Room



Dimensions: 13'9" x 13'5"
Area: 183 sq. ft
Counted as living area: Yes

Heated: Yes
Finished: Yes
Enclosed: Yes
Contiguous: Yes
Permitted: Yes
Wet space: No
Addition: No
Conversion: No

7 Floor 2 - Outdoor



Dimensions: 24'10" x 16'0"
Area: 244 sq. ft
Counted as living area: No

Heated: No
Finished: Yes
Enclosed: No
Contiguous: Yes
Permitted: Yes
Wet space: No
Addition: No
Conversion: No

8 Floor 2 - Living Room



Dimensions: 13'9" x 13'3"
Area: 184 sq. ft
Counted as living area: Yes

Heated: Yes
Finished: Yes
Enclosed: Yes
Contiguous: Yes
Permitted: Yes
Wet space: No
Addition: No
Conversion: No

410 8th Street Southeast, Belmont, Roanoke, Roanoke, Virginia, United States, 24013

9 Floor 2 - Living Room



Dimensions: 13'9" x 13'9"
Area: 190 sq. ft
Counted as living area: Yes

Heated: Yes
Finished: Yes
Enclosed: Yes
Contiguous: Yes
Permitted: Yes
Wet space: No
Addition: No
Conversion: No

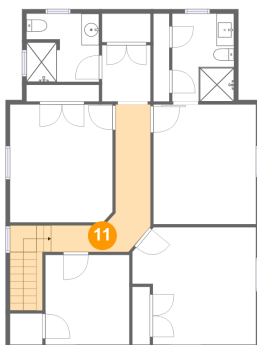
10 Floor 2 - Bath



Dimensions: 5'1" x 7'11"
Area: 40 sq. ft
Counted as living area: Yes

Heated: Yes
Finished: Yes
Enclosed: Yes
Contiguous: Yes
Permitted: Yes
Wet space: Yes
Addition: No
Conversion: No

11 Floor 3 - Hall

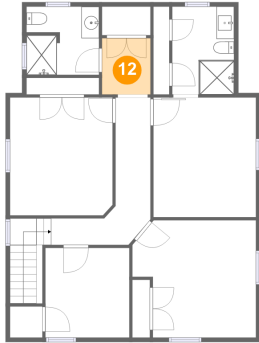


Dimensions: 10'1" x 16'9"
Area: 124 sq. ft
Counted as living area: Yes

Heated: Yes
Finished: Yes
Enclosed: Yes
Contiguous: Yes
Permitted: Yes
Wet space: No
Addition: No
Conversion: No

**410 8th Street Southeast, Belmont, Roanoke,
Roanoke, Virginia, United States, 24013**

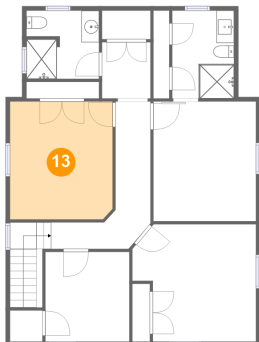
12 Floor 3 - Hall



Dimensions: 5'6" x 6'5"
Area: 35 sq. ft
Counted as living area: Yes

Heated: Yes
Finished: Yes
Enclosed: Yes
Contiguous: Yes
Permitted: Yes
Wet space: No
Addition: No
Conversion: No

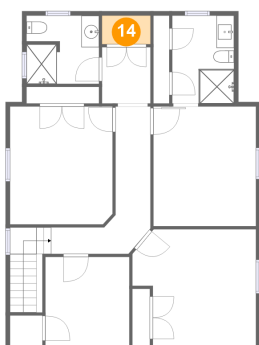
13 Floor 3 - Bedroom



Dimensions: 11'7" x 13'5"
Area: 155 sq. ft
Counted as living area: Yes

Heated: Yes
Finished: Yes
Enclosed: Yes
Contiguous: Yes
Permitted: Yes
Wet space: No
Addition: No
Conversion: No

14 Floor 3 - Utility

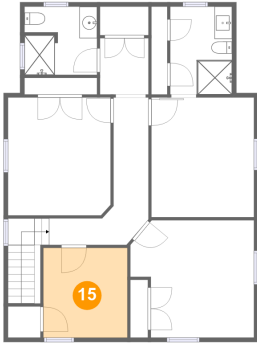


Dimensions: 5'6" x 3'3"
Area: 18 sq. ft
Counted as living area: Yes

Heated: Yes
Finished: Yes
Enclosed: Yes
Contiguous: Yes
Permitted: Yes
Wet space: No
Addition: No
Conversion: No

410 8th Street Southeast, Belmont, Roanoke, Roanoke, Virginia, United States, 24013

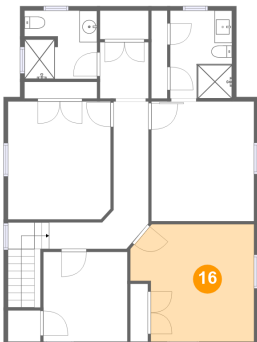
15 Floor 3 - Bedroom



Dimensions: 9'6" x 10'2"
Area: 97 sq. ft
Counted as living area: Yes

Heated: Yes
Finished: Yes
Enclosed: Yes
Contiguous: Yes
Permitted: Yes
Wet space: No
Addition: No
Conversion: No

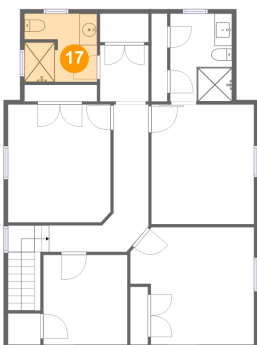
16 Floor 3 - Bedroom



Dimensions: 14'0" x 13'4"
Area: 167 sq. ft
Counted as living area: Yes

Heated: Yes
Finished: Yes
Enclosed: Yes
Contiguous: Yes
Permitted: Yes
Wet space: No
Addition: No
Conversion: No

17 Floor 3 - Bath

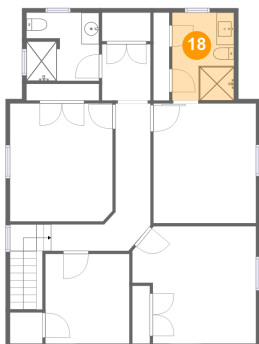


Dimensions: 8'2" x 7'9"
Area: 62 sq. ft
Counted as living area: Yes

Heated: Yes
Finished: Yes
Enclosed: Yes
Contiguous: Yes
Permitted: Yes
Wet space: Yes
Addition: No
Conversion: No

410 8th Street Southeast, Belmont, Roanoke, Roanoke, Virginia, United States, 24013

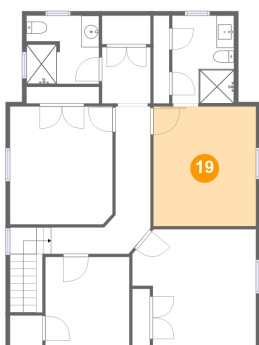
18 Floor 3 - Bath



Dimensions: 7'0" x 10'0"
Area: 70 sq. ft
Counted as living area: Yes

Heated: Yes
Finished: Yes
Enclosed: Yes
Contiguous: Yes
Permitted: Yes
Wet space: Yes
Addition: No
Conversion: No

19 Floor 3 - Bedroom



Dimensions: 11'7" x 13'7"
Area: 158 sq. ft
Counted as living area: Yes

Heated: Yes
Finished: Yes
Enclosed: Yes
Contiguous: Yes
Permitted: Yes
Wet space: No
Addition: No
Conversion: No