


# 33 Pepler Pl, Barrie, ON, CA



## Property summary

 **0** Garages

 **4** Bedrooms

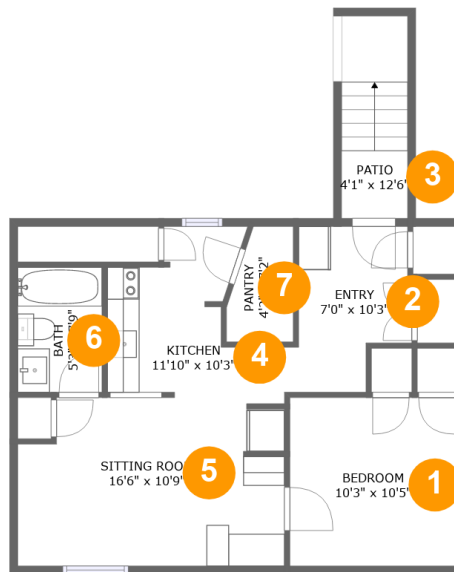
 **2** Bathrooms

 **1** Half baths

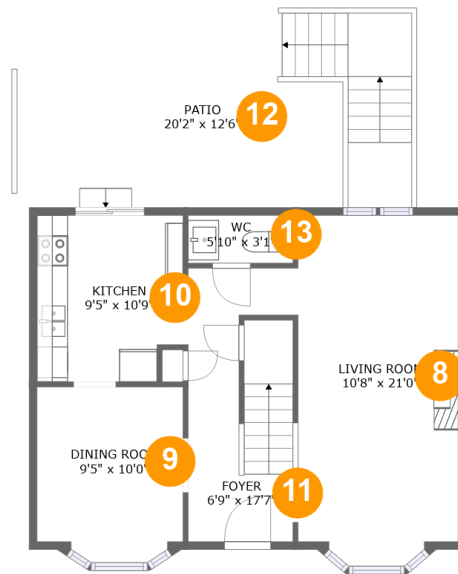
 **3** Floors

 **1,873** Gross living area sqft

 **2,250** Total sqft

**33 Pepler Pl, Barrie, ON, CA****Room dimensions****Floor 1****Total sqft: 684    Living area: 633**

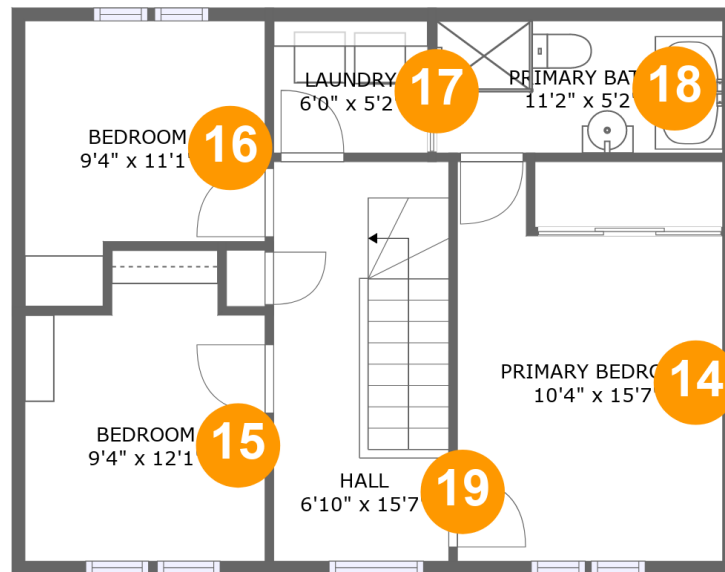
#		Dimensions	sqft	Counted as living area
1	Bedroom	10'3" x 10'5"	107 sq. ft	Yes
2	Entry	7'0" x 10'3"	62 sq. ft	Yes
3	Patio	4'1" x 12'6"	51 sq. ft	No
4	Kitchen	11'10" x 10'3"	80 sq. ft	Yes
5	Sitting Room	16'6" x 10'9"	167 sq. ft	Yes
6	Bath	5'3" x 7'9"	40 sq. ft	Yes
7	Pantry	4'2" x 7'2"	25 sq. ft	Yes

**33 Pepler Pl, Barrie, ON, CA****Room dimensions**

Floor 2

Total sqft: 946    Living area: 620

#		Dimensions	sqft	Counted as living area
8	Living Room	10'8" x 21'0"	219 sq. ft	Yes
9	Dining Room	9'5" x 10'0"	94 sq. ft	Yes
10	Kitchen	9'5" x 10'9"	97 sq. ft	Yes
11	Foyer	6'9" x 17'7"	104 sq. ft	Yes
12	Patio	20'2" x 12'6"	309 sq. ft	No
13	WC	5'10" x 3'1"	21 sq. ft	Yes

**33 Pepler Pl, Barrie, ON, CA****Room dimensions**

Floor 3

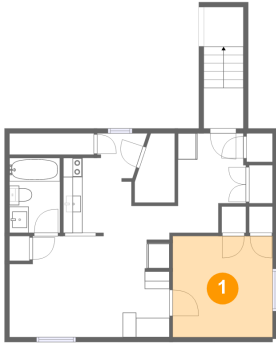
Total sqft: 620 Living area: 620

#		Dimensions	sqft	Counted as living area
14	Primary Bedroom	10'4" x 15'7"	138 sq. ft	Yes
15	Bedroom	9'4" x 12'1"	100 sq. ft	Yes
16	Bedroom	9'4" x 11'1"	88 sq. ft	Yes
17	Laundry	6'0" x 5'2"	31 sq. ft	Yes
18	Primary Bath	11'2" x 5'2"	57 sq. ft	Yes
19	Hall	6'10" x 15'7"	106 sq. ft	Yes

# 33 Pepler Pl, Barrie, ON, CA

## 1 Floor 1 - Bedroom

---

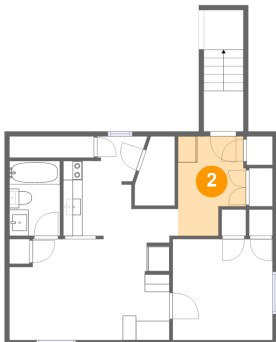


**Dimensions:** 10'3" x 10'5"  
**Area:** 107 sq. ft  
**Counted as living area:** Yes

**Heated:** Yes  
**Finished:** Yes  
**Enclosed:** Yes  
**Contiguous:** Yes  
**Permitted:** Yes  
**Wet space:** No  
**Addition:** No  
**Conversion:** No

## 2 Floor 1 - Entry

---

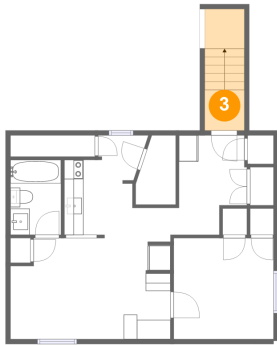


**Dimensions:** 7'0" x 10'3"  
**Area:** 62 sq. ft  
**Counted as living area:** Yes

**Heated:** Yes  
**Finished:** Yes  
**Enclosed:** Yes  
**Contiguous:** Yes  
**Permitted:** Yes  
**Wet space:** No  
**Addition:** No  
**Conversion:** No

# 33 Pepler Pl, Barrie, ON, CA

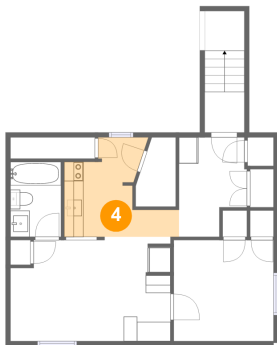
## 3 Floor 1 - Patio



Dimensions: 4'1" x 12'6"  
Area: 51 sq. ft  
Counted as living area: No

Heated: No  
Finished: Yes  
Enclosed: No  
Contiguous: Yes  
Permitted: Yes  
Wet space: No  
Addition: No  
Conversion: No

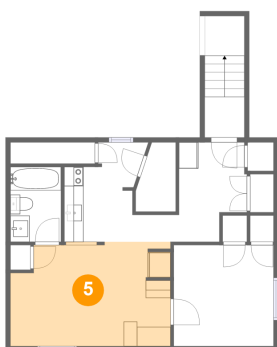
## 4 Floor 1 - Kitchen



Dimensions: 11'10" x 10'3"  
Area: 80 sq. ft  
Counted as living area: Yes

Heated: Yes  
Finished: Yes  
Enclosed: Yes  
Contiguous: Yes  
Permitted: Yes  
Wet space: No  
Addition: No  
Conversion: No

## 5 Floor 1 - Sitting Room

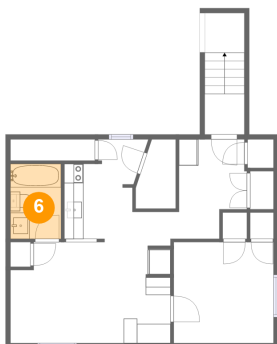


Dimensions: 16'6" x 10'9"  
Area: 167 sq. ft  
Counted as living area: Yes

Heated: Yes  
Finished: Yes  
Enclosed: Yes  
Contiguous: Yes  
Permitted: Yes  
Wet space: No  
Addition: No  
Conversion: No

# 33 Pepler Pl, Barrie, ON, CA

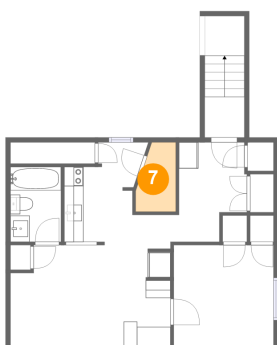
## 6 Floor 1 - Bath



Dimensions: 5'3" x 7'9"  
Area: 40 sq. ft  
Counted as living area: Yes

Heated: Yes  
Finished: Yes  
Enclosed: Yes  
Contiguous: Yes  
Permitted: Yes  
Wet space: Yes  
Addition: No  
Conversion: No

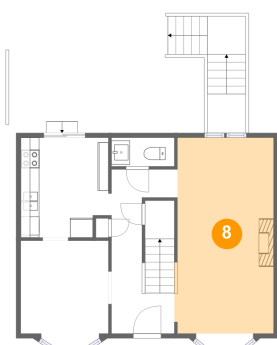
## 7 Floor 1 - Pantry



Dimensions: 4'2" x 7'2"  
Area: 25 sq. ft  
Counted as living area: Yes

Heated: Yes  
Finished: Yes  
Enclosed: Yes  
Contiguous: Yes  
Permitted: Yes  
Wet space: No  
Addition: No  
Conversion: No

## 8 Floor 2 - Living Room

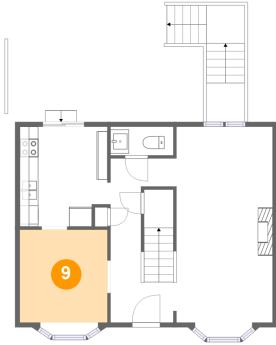


Dimensions: 10'8" x 21'0"  
Area: 219 sq. ft  
Counted as living area: Yes

Heated: Yes  
Finished: Yes  
Enclosed: Yes  
Contiguous: Yes  
Permitted: Yes  
Wet space: No  
Addition: No  
Conversion: No

# 33 Pepler Pl, Barrie, ON, CA

## 9 Floor 2 - Dining Room



Dimensions: 9'5" x 10'0"  
Area: 94 sq. ft  
Counted as living area: Yes

Heated: Yes  
Finished: Yes  
Enclosed: Yes  
Contiguous: Yes  
Permitted: Yes  
Wet space: No  
Addition: No  
Conversion: No

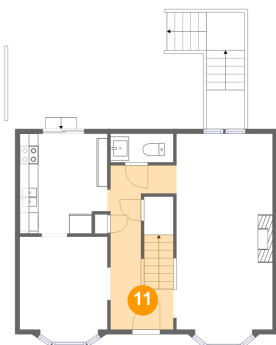
## 10 Floor 2 - Kitchen



Dimensions: 9'5" x 10'9"  
Area: 97 sq. ft  
Counted as living area: Yes

Heated: Yes  
Finished: Yes  
Enclosed: Yes  
Contiguous: Yes  
Permitted: Yes  
Wet space: No  
Addition: No  
Conversion: No

## 11 Floor 2 - Foyer



Dimensions: 6'9" x 17'7"  
Area: 104 sq. ft  
Counted as living area: Yes

Heated: Yes  
Finished: Yes  
Enclosed: Yes  
Contiguous: Yes  
Permitted: Yes  
Wet space: No  
Addition: No  
Conversion: No



# 33 Pepler Pl, Barrie, ON, CA

## 12 Floor 2 - Patio



Dimensions: 20'2" x 12'6"  
Area: 309 sq. ft  
Counted as living area: No

Heated: No  
Finished: Yes  
Enclosed: No  
Contiguous: Yes  
Permitted: Yes  
Wet space: No  
Addition: No  
Conversion: No

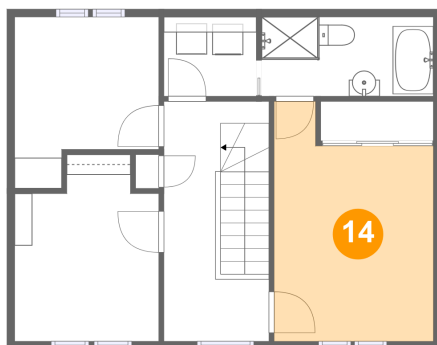
## 13 Floor 2 - WC



Dimensions: 5'10" x 3'1"  
Area: 21 sq. ft  
Counted as living area: Yes

Heated: Yes  
Finished: Yes  
Enclosed: Yes  
Contiguous: Yes  
Permitted: Yes  
Wet space: Yes  
Addition: No  
Conversion: No

## 14 Floor 3 - Primary Bedroom

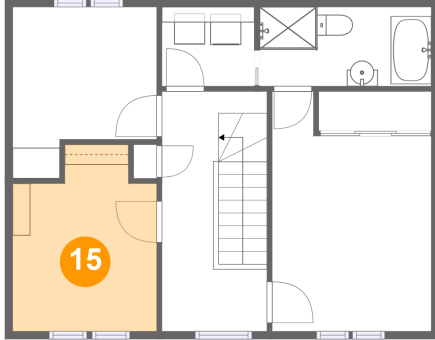


Dimensions: 10'4" x 15'7"  
Area: 138 sq. ft  
Counted as living area: Yes

Heated: Yes  
Finished: Yes  
Enclosed: Yes  
Contiguous: Yes  
Permitted: Yes  
Wet space: No  
Addition: No  
Conversion: No

# 33 Pepler Pl, Barrie, ON, CA

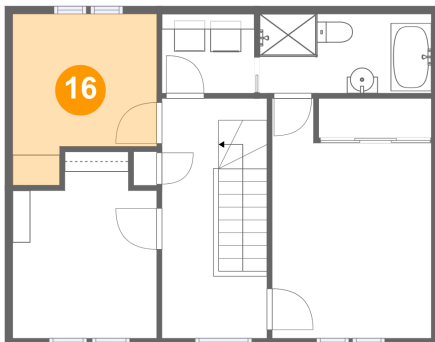
## 15 Floor 3 - Bedroom



Dimensions: 9'4" x 12'1"  
Area: 100 sq. ft  
Counted as living area: Yes

Heated: Yes  
Finished: Yes  
Enclosed: Yes  
Contiguous: Yes  
Permitted: Yes  
Wet space: No  
Addition: No  
Conversion: No

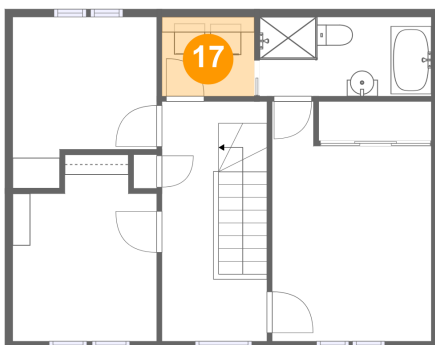
## 16 Floor 3 - Bedroom



Dimensions: 9'4" x 11'1"  
Area: 88 sq. ft  
Counted as living area: Yes

Heated: Yes  
Finished: Yes  
Enclosed: Yes  
Contiguous: Yes  
Permitted: Yes  
Wet space: No  
Addition: No  
Conversion: No

## 17 Floor 3 - Laundry

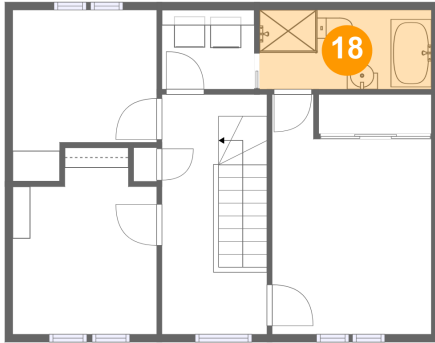


Dimensions: 6'0" x 5'2"  
Area: 31 sq. ft  
Counted as living area: Yes

Heated: Yes  
Finished: Yes  
Enclosed: Yes  
Contiguous: Yes  
Permitted: Yes  
Wet space: No  
Addition: No  
Conversion: No

## 33 Pepler Pl, Barrie, ON, CA

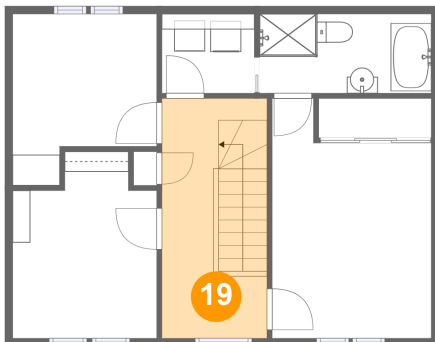
### 18 Floor 3 - Primary Bath



Dimensions: 11'2" x 5'2"  
Area: 57 sq. ft  
Counted as living area: Yes

Heated: Yes  
Finished: Yes  
Enclosed: Yes  
Contiguous: Yes  
Permitted: Yes  
Wet space: Yes  
Addition: No  
Conversion: No

### 19 Floor 3 - Hall



Dimensions: 6'10" x 15'7"  
Area: 106 sq. ft  
Counted as living area: Yes

Heated: Yes  
Finished: Yes  
Enclosed: Yes  
Contiguous: Yes  
Permitted: Yes  
Wet space: No  
Addition: No  
Conversion: No