

Home report

3535 Aston Trail, Powhatan, Powhatan County, Virginia, United States, 23139



Total Area: 3288 sq. ft
Floor 1: 1338 sq. ft, Floor 2: 1950 sq. ft
Excluded: Porch 227 sq. ft, Screened porch 208 sq. ft, Garage 634 sq. ft, Fireplace 17 sq. ft, Walls: 221 sq. ft

Property summary

 **2** Floors

 **5** Bedrooms

 **3** Bathrooms

Home report

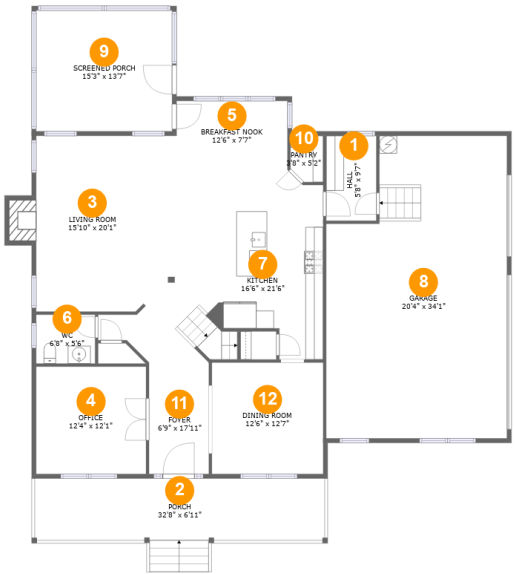
3535 Aston Trail, Powhatan, Powhatan County, Virginia, United States, 23139

 **1**
Half baths

 **1**
Garages

Home report

3535 Aston Trail, Powhatan, Powhatan County, Virginia, United States, 23139



Room dimensions

Floor 1

Total:1338sqft

Excluded: 1086sqft

#		Max Dimensions	sqft	Included
1	Hall	5'8" x 9'7"	54 sq. ft	Yes
2	Porch	32'8" x 6'11"	227 sq. ft	No
3	Living Room	15'10" x 20'1"	328 sq. ft	Yes
4	Office	12'4" x 12'1"	150 sq. ft	Yes
5	Breakfast Nook	12'6" x 7'7"	95 sq. ft	Yes
6	WC	6'8" x 5'6"	37 sq. ft	Yes
7	Kitchen	16'6" x 21'6"	301 sq. ft	Yes
8	Garage	20'4" x 34'1"	634 sq. ft	No
9	Screened Porch	15'3" x 13'7"	208 sq. ft	No
10	Pantry	3'8" x 5'2"	18 sq. ft	Yes
11	Foyer	6'9" x 17'11"	151 sq. ft	Yes

Home report

3535 Aston Trail, Powhatan, Powhatan County, Virginia, United States, 23139

#		Max Dimensions	sqft	Included
12	Dining Room	12'6" x 12'7"	157 sq. ft	Yes

Home report

3535 Aston Trail, Powhatan, Powhatan County, Virginia, United States, 23139



Room dimensions

Floor 2

Total:1950sqft

Excluded: 0sqft

#		Max Dimensions	sqft	Included
13	W.I.C.	6'10" x 5'2"	35 sq. ft	Yes
14	Bedroom	14'10" x 15'10"	236 sq. ft	Yes
15	Bedroom	12'7" x 12'7"	157 sq. ft	Yes
16	Hall	27'9" x 9'11"	226 sq. ft	Yes
17	W.I.C.	6'10" x 4'10"	33 sq. ft	Yes
18	Primary Bath	13'9" x 10'3"	129 sq. ft	Yes
19	Laundry	6'3" x 8'6"	54 sq. ft	Yes
20	Bedroom	12'5" x 15'4"	168 sq. ft	Yes
21	W.I.C.	6'10" x 5'0"	22 sq. ft	Yes
22	WC	2'9" x 5'4"	15 sq. ft	Yes
23	W.I.C.	13'9" x 8'4"	120 sq. ft	Yes

Home report

3535 Aston Trail, Powhatan, Powhatan County, Virginia, United States, 23139

#		Max Dimensions	sqft	Included
24	Bath	10'10" x 5'9"	64 sq. ft	Yes
25	Primary Bedroom	19'0" x 14'10"	282 sq. ft	Yes
26	Bedroom	12'5" x 15'9"	188 sq. ft	Yes
27	Bath	5'8" x 5'0"	29 sq. ft	Yes
28	W.I.C.	5'4" x 5'0"	20 sq. ft	Yes
29	Bath	5'8" x 4'2"	24 sq. ft	Yes
30	Bath	5'8" x 8'1"	45 sq. ft	Yes

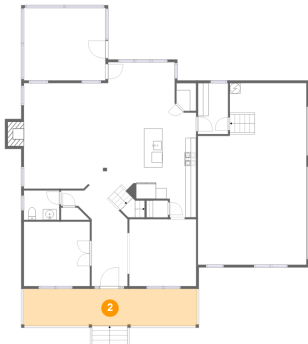
1 Floor 1 - Hall



Max Dimensions: 5'8" x 9'7"
Calculated Area: 54 sq. ft
Included: Yes

Heated: Yes
Finished: Yes
Enclosed: Yes
Contiguous: Yes
Permitted: Yes
Wet space: No
Addition: No
Conversion: No

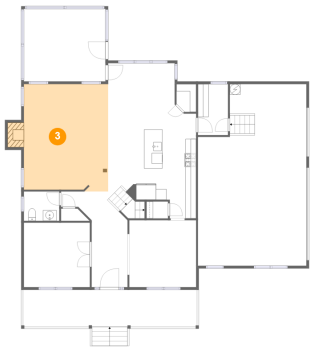
2 Floor 1 - Porch



Max Dimensions: 32'8" x 6'11"
Calculated Area: 227 sq. ft
Included: No

Heated: No
Finished: Yes
Enclosed: No
Contiguous: Yes
Permitted: Yes
Wet space: No
Addition: No
Conversion: No

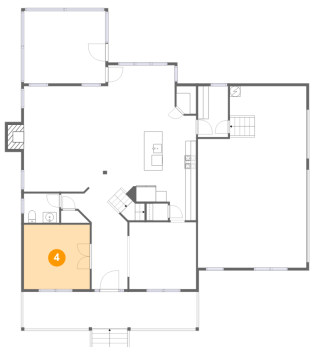
3 Floor 1 - Living Room



Max Dimensions: 15'10" x 20'1"
Calculated Area: 328 sq. ft
Included: Yes

Heated: Yes
Finished: Yes
Enclosed: Yes
Contiguous: Yes
Permitted: Yes
Wet space: No
Addition: No
Conversion: No

4 Floor 1 - Office



Max Dimensions: 12'4" x 12'1"
Calculated Area: 150 sq. ft
Included: Yes

Heated: Yes
Finished: Yes
Enclosed: Yes
Contiguous: Yes
Permitted: Yes
Wet space: No
Addition: No
Conversion: No

5 Floor 1 - Breakfast Nook



Max Dimensions: 12'6" x 7'7"
Calculated Area: 95 sq. ft
Included: Yes

Heated: Yes
Finished: Yes
Enclosed: Yes
Contiguous: Yes
Permitted: Yes
Wet space: No
Addition: No
Conversion: No

3535 Aston Trail, Powhatan, Powhatan County, Virginia, United States, 23139

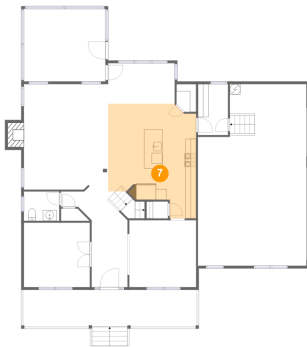
6 Floor 1 - WC



Max Dimensions: 6'8" x 5'6"
Calculated Area: 37 sq. ft
Included: Yes

Heated: Yes
Finished: Yes
Enclosed: Yes
Contiguous: Yes
Permitted: Yes
Wet space: Yes
Addition: No
Conversion: No

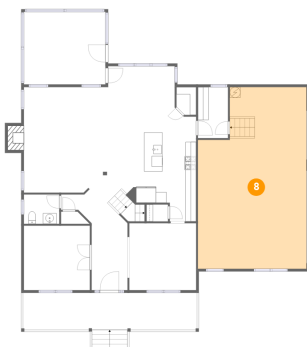
7 Floor 1 - Kitchen



Max Dimensions: 16'6" x 21'6"
Calculated Area: 301 sq. ft
Included: Yes

Heated: Yes
Finished: Yes
Enclosed: Yes
Contiguous: Yes
Permitted: Yes
Wet space: No
Addition: No
Conversion: No

8 Floor 1 - Garage



Max Dimensions: 20'4" x 34'1"
Calculated Area: 634 sq. ft
Included: No

Heated: No
Finished: No
Enclosed: Yes
Contiguous: Yes
Permitted: Yes
Wet space: No
Addition: No
Conversion: No

3535 Aston Trail, Powhatan, Powhatan County, Virginia, United States, 23139

9 Floor 1 - Screened Porch



Max Dimensions: 15'3" x 13'7"
Calculated Area: 208 sq. ft
Included: No

Heated: No
Finished: Yes
Enclosed: No
Contiguous: Yes
Permitted: Yes
Wet space: No
Addition: No
Conversion: No

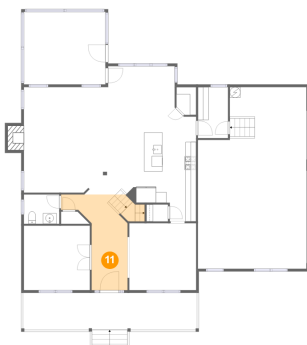
10 Floor 1 - Pantry



Max Dimensions: 3'8" x 5'2"
Calculated Area: 18 sq. ft
Included: Yes

Heated: Yes
Finished: Yes
Enclosed: Yes
Contiguous: Yes
Permitted: Yes
Wet space: No
Addition: No
Conversion: No

11 Floor 1 - Foyer

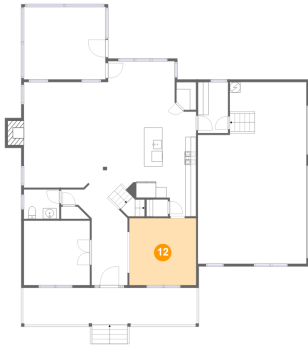


Max Dimensions: 6'9" x 17'11"
Calculated Area: 151 sq. ft
Included: Yes

Heated: Yes
Finished: Yes
Enclosed: Yes
Contiguous: Yes
Permitted: Yes
Wet space: No
Addition: No
Conversion: No

3535 Aston Trail, Powhatan, Powhatan County, Virginia, United States, 23139

12 Floor 1 - Dining Room



Max Dimensions: 12'6" x 12'7"
Calculated Area: 157 sq. ft
Included: Yes

Heated: Yes
Finished: Yes
Enclosed: Yes
Contiguous: Yes
Permitted: Yes
Wet space: No
Addition: No
Conversion: No

13 Floor 2 - W.I.C.



Max Dimensions: 6'10" x 5'2"
Calculated Area: 35 sq. ft
Included: Yes

Heated: Yes
Finished: Yes
Enclosed: Yes
Contiguous: Yes
Permitted: Yes
Wet space: No
Addition: No
Conversion: No

14 Floor 2 - Bedroom



Max Dimensions: 14'10" x 15'10"
Calculated Area: 236 sq. ft
Included: Yes

Heated: Yes
Finished: Yes
Enclosed: Yes
Contiguous: Yes
Permitted: Yes
Wet space: No
Addition: No
Conversion: No

3535 Aston Trail, Powhatan, Powhatan County, Virginia, United States, 23139

15 Floor 2 - Bedroom



Max Dimensions: 12'7" x 12'7"
Calculated Area: 157 sq. ft
Included: Yes

Heated: Yes
Finished: Yes
Enclosed: Yes
Contiguous: Yes
Permitted: Yes
Wet space: No
Addition: No
Conversion: No

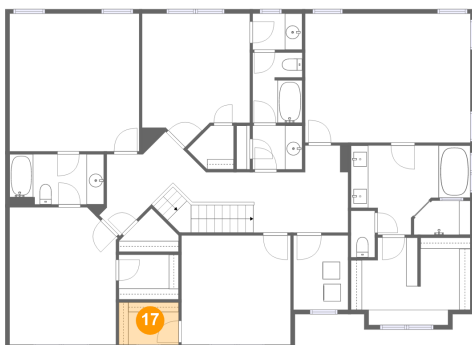
16 Floor 2 - Hall



Max Dimensions: 27'9" x 9'11"
Calculated Area: 226 sq. ft
Included: Yes

Heated: Yes
Finished: Yes
Enclosed: Yes
Contiguous: Yes
Permitted: Yes
Wet space: No
Addition: No
Conversion: No

17 Floor 2 - W.I.C.



Max Dimensions: 6'10" x 4'10"
Calculated Area: 33 sq. ft
Included: Yes

Heated: Yes
Finished: Yes
Enclosed: Yes
Contiguous: Yes
Permitted: Yes
Wet space: No
Addition: No
Conversion: No

3535 Aston Trail, Powhatan, Powhatan County, Virginia, United States, 23139

18 Floor 2 - Primary Bath



Max Dimensions: 13'9" x 10'3"
Calculated Area: 129 sq. ft
Included: Yes

Heated: Yes
Finished: Yes
Enclosed: Yes
Contiguous: Yes
Permitted: Yes
Wet space: Yes
Addition: No
Conversion: No

19 Floor 2 - Laundry



Max Dimensions: 6'3" x 8'6"
Calculated Area: 54 sq. ft
Included: Yes

Heated: Yes
Finished: Yes
Enclosed: Yes
Contiguous: Yes
Permitted: Yes
Wet space: No
Addition: No
Conversion: No

20 Floor 2 - Bedroom



Max Dimensions: 12'5" x 15'4"
Calculated Area: 168 sq. ft
Included: Yes

Heated: Yes
Finished: Yes
Enclosed: Yes
Contiguous: Yes
Permitted: Yes
Wet space: No
Addition: No
Conversion: No

Home report

3535 Aston Trail, Powhatan, Powhatan County, Virginia, United States, 23139

21 Floor 2 - W.I.C.



Max Dimensions: 6'10" x 5'0"
Calculated Area: 22 sq. ft
Included: Yes

Heated: Yes
Finished: Yes
Enclosed: Yes
Contiguous: Yes
Permitted: Yes
Wet space: No
Addition: No
Conversion: No

22 Floor 2 - WC



Max Dimensions: 2'9" x 5'4"
Calculated Area: 15 sq. ft
Included: Yes

Heated: Yes
Finished: Yes
Enclosed: Yes
Contiguous: Yes
Permitted: Yes
Wet space: Yes
Addition: No
Conversion: No

23 Floor 2 - W.I.C.



Max Dimensions: 13'9" x 8'4"
Calculated Area: 120 sq. ft
Included: Yes

Heated: Yes
Finished: Yes
Enclosed: Yes
Contiguous: Yes
Permitted: Yes
Wet space: No
Addition: No
Conversion: No

3535 Aston Trail, Powhatan, Powhatan County, Virginia, United States, 23139

24 Floor 2 - Bath



Max Dimensions: 10'10" x 5'9"
Calculated Area: 64 sq. ft
Included: Yes

Heated: Yes
Finished: Yes
Enclosed: Yes
Contiguous: Yes
Permitted: Yes
Wet space: Yes
Addition: No
Conversion: No

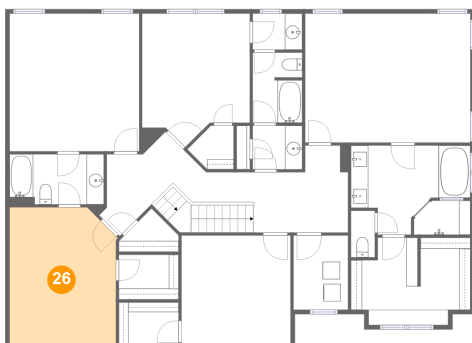
25 Floor 2 - Primary Bedroom



Max Dimensions: 19'0" x 14'10"
Calculated Area: 282 sq. ft
Included: Yes

Heated: Yes
Finished: Yes
Enclosed: Yes
Contiguous: Yes
Permitted: Yes
Wet space: No
Addition: No
Conversion: No

26 Floor 2 - Bedroom



Max Dimensions: 12'5" x 15'9"
Calculated Area: 188 sq. ft
Included: Yes

Heated: Yes
Finished: Yes
Enclosed: Yes
Contiguous: Yes
Permitted: Yes
Wet space: No
Addition: No
Conversion: No

3535 Aston Trail, Powhatan, Powhatan County, Virginia, United States, 23139

27 Floor 2 - Bath



Max Dimensions: 5'8" x 5'0"
Calculated Area: 29 sq. ft
Included: Yes

Heated: Yes
Finished: Yes
Enclosed: Yes
Contiguous: Yes
Permitted: Yes
Wet space: Yes
Addition: No
Conversion: No

28 Floor 2 - W.I.C.



Max Dimensions: 5'4" x 5'0"
Calculated Area: 20 sq. ft
Included: Yes

Heated: Yes
Finished: Yes
Enclosed: Yes
Contiguous: Yes
Permitted: Yes
Wet space: No
Addition: No
Conversion: No

29 Floor 2 - Bath



Max Dimensions: 5'8" x 4'2"
Calculated Area: 24 sq. ft
Included: Yes

Heated: Yes
Finished: Yes
Enclosed: Yes
Contiguous: Yes
Permitted: Yes
Wet space: Yes
Addition: No
Conversion: No

30 Floor 2 - Bath



Max Dimensions: 5'8" x 8'1"
Calculated Area: 45 sq. ft
Included: Yes

Heated: Yes
Finished: Yes
Enclosed: Yes
Contiguous: Yes
Permitted: Yes
Wet space: Yes
Addition: No
Conversion: No