

Home report

2452 Old Route 17, Sanford, Windsor, Broome County, New York, United States, 13865



Total Area: 3016 sq. ft
Below Ground: 703 sq. ft, Floor 2: 1371 sq. ft, Floor 3: 942 sq. ft
Excluded: Utility 114 sq. ft, Undefined 24 sq. ft, Garage 587 sq. ft, Porch 227 sq. ft, Walls: 261 sq. ft

Property summary

 **3** Floors

 **4** Bedrooms

 **2** Bathrooms

Home report

2452 Old Route 17, Sanford, Windsor, Broome County, New York, United States, 13865



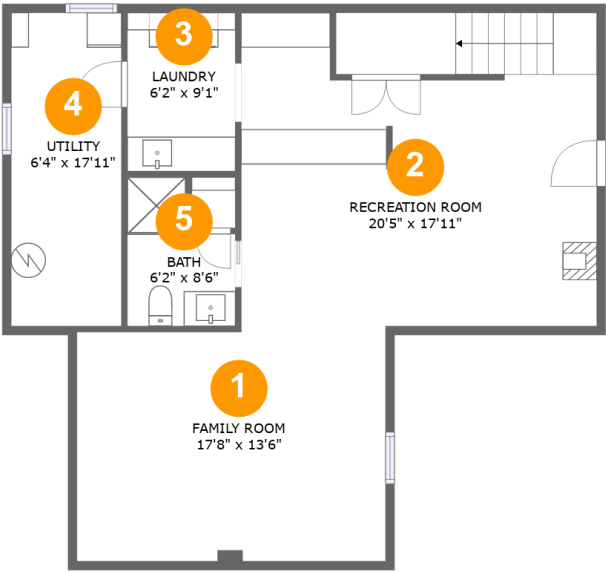
1
Half baths



1
Garages

Home report

2452 Old Route 17, Sanford, Windsor, Broome County, New York, United States, 13865



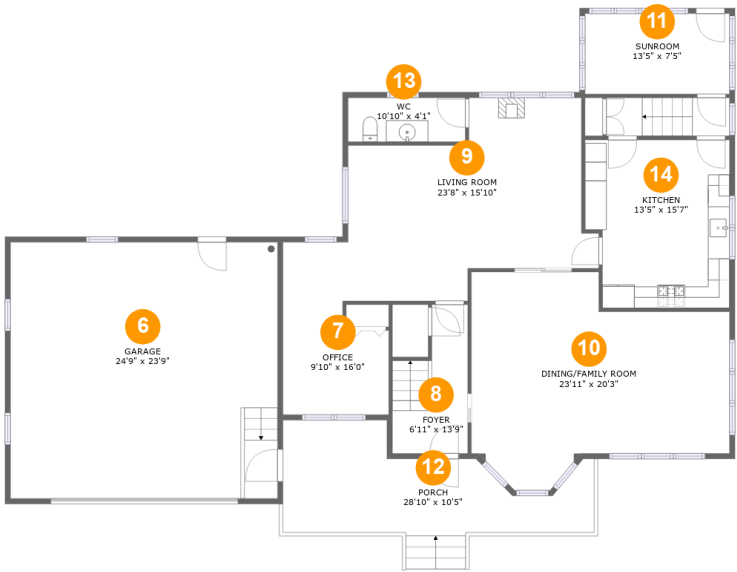
Room dimensions

Floor 1 Below ground Total:703sqft Excluded: 138sqft

#		Max Dimensions	sqft	Included
1	Family Room	17'8" x 13'6"	235 sq. ft	Yes
2	Recreation Room	20'5" x 17'11"	337 sq. ft	Yes
3	Laundry	6'2" x 9'1"	56 sq. ft	Yes
4	Utility	6'4" x 17'11"	114 sq. ft	No
5	Bath	6'2" x 8'6"	44 sq. ft	Yes

Home report

2452 Old Route 17, Sanford, Windsor, Broome County, New York, United States, 13865



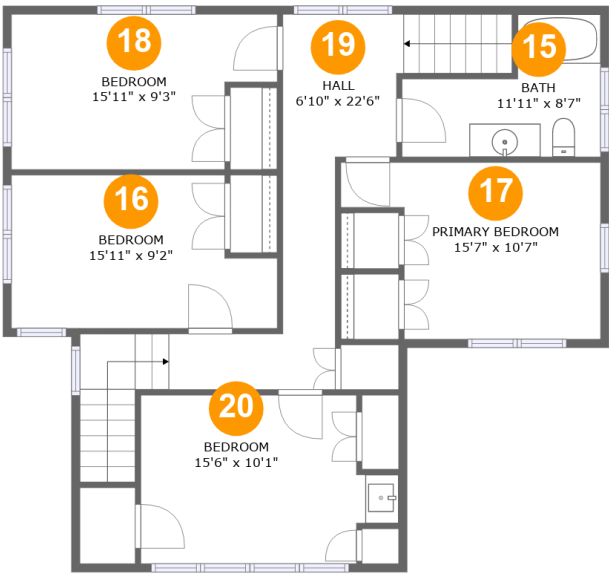
Room dimensions

Floor 2 Total:1371sqft Excluded: 814sqft

#		Max Dimensions	sqft	Included
6	Garage	24'9" x 23'9"	587 sq. ft	No
7	Office	9'10" x 16'0"	122 sq. ft	Yes
8	Foyer	6'11" x 13'9"	77 sq. ft	Yes
9	Living Room	23'8" x 15'10"	333 sq. ft	Yes
10	DINING/FAMILY Room	23'11" x 20'3"	379 sq. ft	Yes
11	Sunroom	13'5" x 7'5"	100 sq. ft	Yes
12	Porch	28'10" x 10'5"	227 sq. ft	No
13	WC	10'10" x 4'1"	44 sq. ft	Yes
14	Kitchen	13'5" x 15'7"	197 sq. ft	Yes

Home report

2452 Old Route 17, Sanford, Windsor, Broome County, New York, United States, 13865



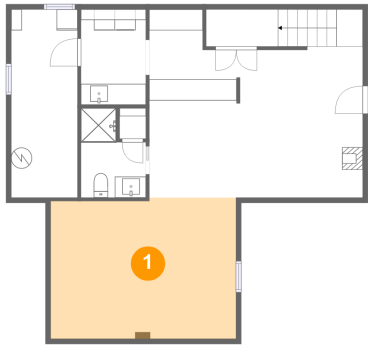
Room dimensions

Floor 3 Total:942sqft Excluded: 0sqft

#		Max Dimensions	sqft	Included
15	Bath	11'11" x 8'7"	75 sq. ft	Yes
16	Bedroom	15'11" x 9'2"	131 sq. ft	Yes
17	Primary Bedroom	15'7" x 10'7"	135 sq. ft	Yes
18	Bedroom	15'11" x 9'3"	132 sq. ft	Yes
19	Hall	6'10" x 22'6"	186 sq. ft	Yes
20	Bedroom	15'6" x 10'1"	138 sq. ft	Yes

2452 Old Route 17, Sanford, Windsor, Broome County, New York, United States, 13865

1 Floor 1 - Family Room



Max Dimensions: 17'8" x 13'6"
Calculated Area: 235 sq. ft
Included: Yes

Heated: Yes
Finished: Yes
Enclosed: Yes
Contiguous: Yes
Permitted: Yes
Wet space: No
Addition: No
Conversion: No

2 Floor 1 - Recreation Room

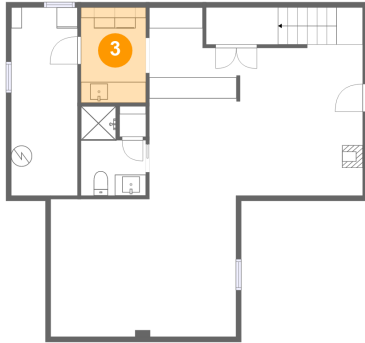


Max Dimensions: 20'5" x 17'11"
Calculated Area: 337 sq. ft
Included: Yes

Heated: Yes
Finished: Yes
Enclosed: Yes
Contiguous: Yes
Permitted: Yes
Wet space: No
Addition: No
Conversion: No

2452 Old Route 17, Sanford, Windsor, Broome County, New York, United States, 13865

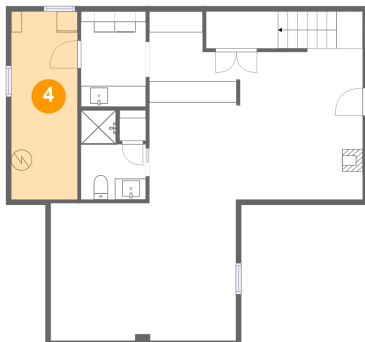
3 Floor 1 - Laundry



Max Dimensions: 6'2" x 9'1"
Calculated Area: 56 sq. ft
Included: Yes

Heated: Yes
Finished: Yes
Enclosed: Yes
Contiguous: Yes
Permitted: Yes
Wet space: No
Addition: No
Conversion: No

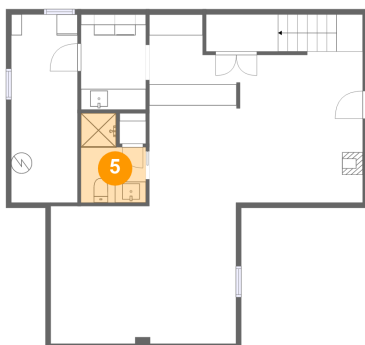
4 Floor 1 - Utility



Max Dimensions: 6'4" x 17'11"
Calculated Area: 114 sq. ft
Included: No

Heated: Yes
Finished: No
Enclosed: Yes
Contiguous: Yes
Permitted: Yes
Wet space: No
Addition: No
Conversion: No

5 Floor 1 - Bath

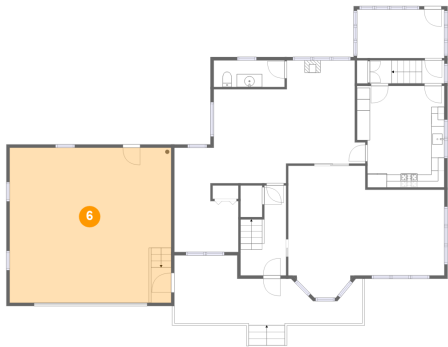


Max Dimensions: 6'2" x 8'6"
Calculated Area: 44 sq. ft
Included: Yes

Heated: Yes
Finished: Yes
Enclosed: Yes
Contiguous: Yes
Permitted: Yes
Wet space: Yes
Addition: No
Conversion: No

2452 Old Route 17, Sanford, Windsor, Broome County, New York, United States, 13865

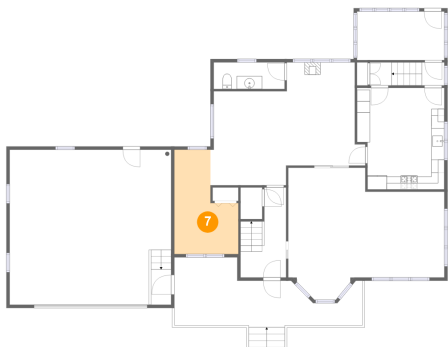
6 Floor 2 - Garage



Max Dimensions: 24'9" x 23'9"
Calculated Area: 587 sq. ft
Included: No

Heated: No
Finished: No
Enclosed: Yes
Contiguous: Yes
Permitted: Yes
Wet space: No
Addition: No
Conversion: No

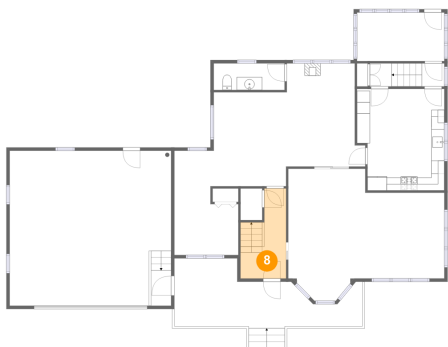
7 Floor 2 - Office



Max Dimensions: 9'10" x 16'0"
Calculated Area: 122 sq. ft
Included: Yes

Heated: Yes
Finished: Yes
Enclosed: Yes
Contiguous: Yes
Permitted: Yes
Wet space: No
Addition: No
Conversion: No

8 Floor 2 - Foyer

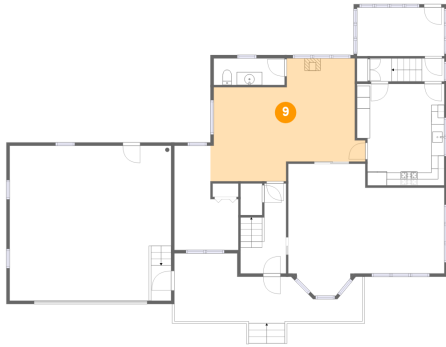


Max Dimensions: 6'11" x 13'9"
Calculated Area: 77 sq. ft
Included: Yes

Heated: Yes
Finished: Yes
Enclosed: Yes
Contiguous: Yes
Permitted: Yes
Wet space: No
Addition: No
Conversion: No

2452 Old Route 17, Sanford, Windsor, Broome County, New York, United States, 13865

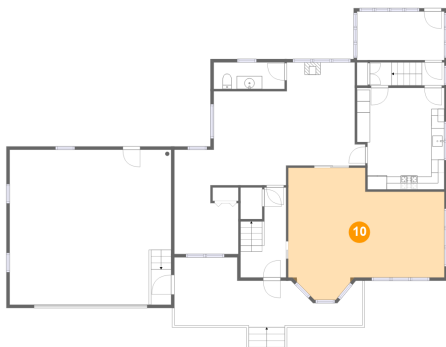
9 Floor 2 - Living Room



Max Dimensions: 23'8" x 15'10"
Calculated Area: 333 sq. ft
Included: Yes

Heated: Yes
Finished: Yes
Enclosed: Yes
Contiguous: Yes
Permitted: Yes
Wet space: No
Addition: No
Conversion: No

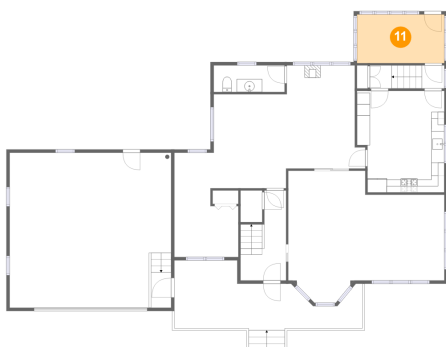
10 Floor 2 - DINING/FAMILY Room



Max Dimensions: 23'11" x 20'3"
Calculated Area: 379 sq. ft
Included: Yes

Heated: Yes
Finished: Yes
Enclosed: Yes
Contiguous: Yes
Permitted: Yes
Wet space: No
Addition: No
Conversion: No

11 Floor 2 - Sunroom

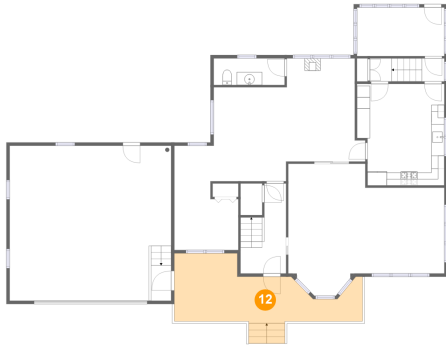


Max Dimensions: 13'5" x 7'5"
Calculated Area: 100 sq. ft
Included: Yes

Heated: Yes
Finished: Yes
Enclosed: Yes
Contiguous: Yes
Permitted: Yes
Wet space: No
Addition: No
Conversion: No

2452 Old Route 17, Sanford, Windsor, Broome County, New York, United States, 13865

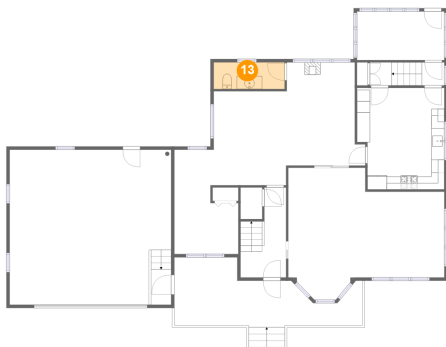
12 Floor 2 - Porch



Max Dimensions: 28'10" x 10'5"
Calculated Area: 227 sq. ft
Included: No

Heated: No
Finished: Yes
Enclosed: No
Contiguous: Yes
Permitted: Yes
Wet space: No
Addition: No
Conversion: No

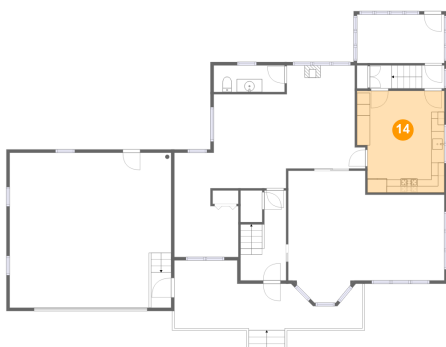
13 Floor 2 - WC



Max Dimensions: 10'10" x 4'1"
Calculated Area: 44 sq. ft
Included: Yes

Heated: Yes
Finished: Yes
Enclosed: Yes
Contiguous: Yes
Permitted: Yes
Wet space: Yes
Addition: No
Conversion: No

14 Floor 2 - Kitchen

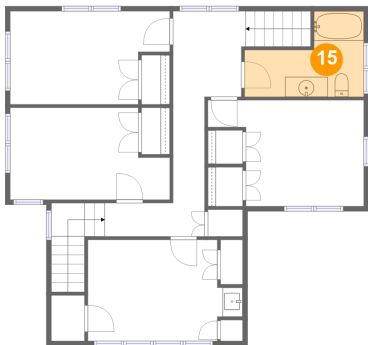


Max Dimensions: 13'5" x 15'7"
Calculated Area: 197 sq. ft
Included: Yes

Heated: Yes
Finished: Yes
Enclosed: Yes
Contiguous: Yes
Permitted: Yes
Wet space: No
Addition: No
Conversion: No

2452 Old Route 17, Sanford, Windsor, Broome County, New York, United States, 13865

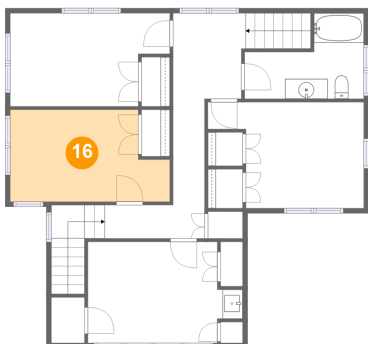
15 Floor 3 - Bath



Max Dimensions: 11'11" x 8'7"
Calculated Area: 75 sq. ft
Included: Yes

Heated: Yes
Finished: Yes
Enclosed: Yes
Contiguous: Yes
Permitted: Yes
Wet space: Yes
Addition: No
Conversion: No

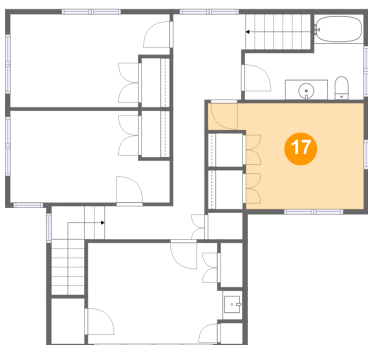
16 Floor 3 - Bedroom



Max Dimensions: 15'11" x 9'2"
Calculated Area: 131 sq. ft
Included: Yes

Heated: Yes
Finished: Yes
Enclosed: Yes
Contiguous: Yes
Permitted: Yes
Wet space: No
Addition: No
Conversion: No

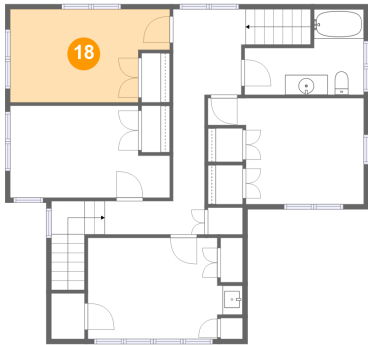
17 Floor 3 - Primary Bedroom



Max Dimensions: 15'7" x 10'7"
Calculated Area: 135 sq. ft
Included: Yes

Heated: Yes
Finished: Yes
Enclosed: Yes
Contiguous: Yes
Permitted: Yes
Wet space: No
Addition: No
Conversion: No

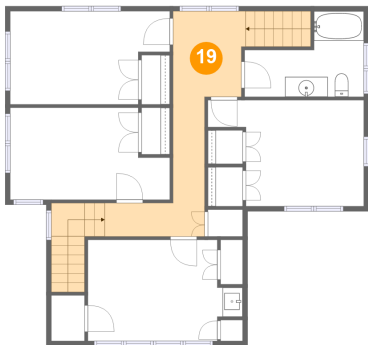
18 Floor 3 - Bedroom



Max Dimensions: 15'11" x 9'3"
Calculated Area: 132 sq. ft
Included: Yes

Heated: Yes
Finished: Yes
Enclosed: Yes
Contiguous: Yes
Permitted: Yes
Wet space: No
Addition: No
Conversion: No

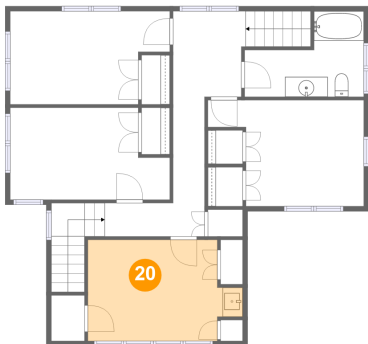
19 Floor 3 - Hall



Max Dimensions: 6'10" x 22'6"
Calculated Area: 186 sq. ft
Included: Yes

Heated: Yes
Finished: Yes
Enclosed: Yes
Contiguous: Yes
Permitted: Yes
Wet space: No
Addition: No
Conversion: No

20 Floor 3 - Bedroom



Max Dimensions: 15'6" x 10'1"
Calculated Area: 138 sq. ft
Included: Yes

Heated: Yes
Finished: Yes
Enclosed: Yes
Contiguous: Yes
Permitted: Yes
Wet space: No
Addition: No
Conversion: No