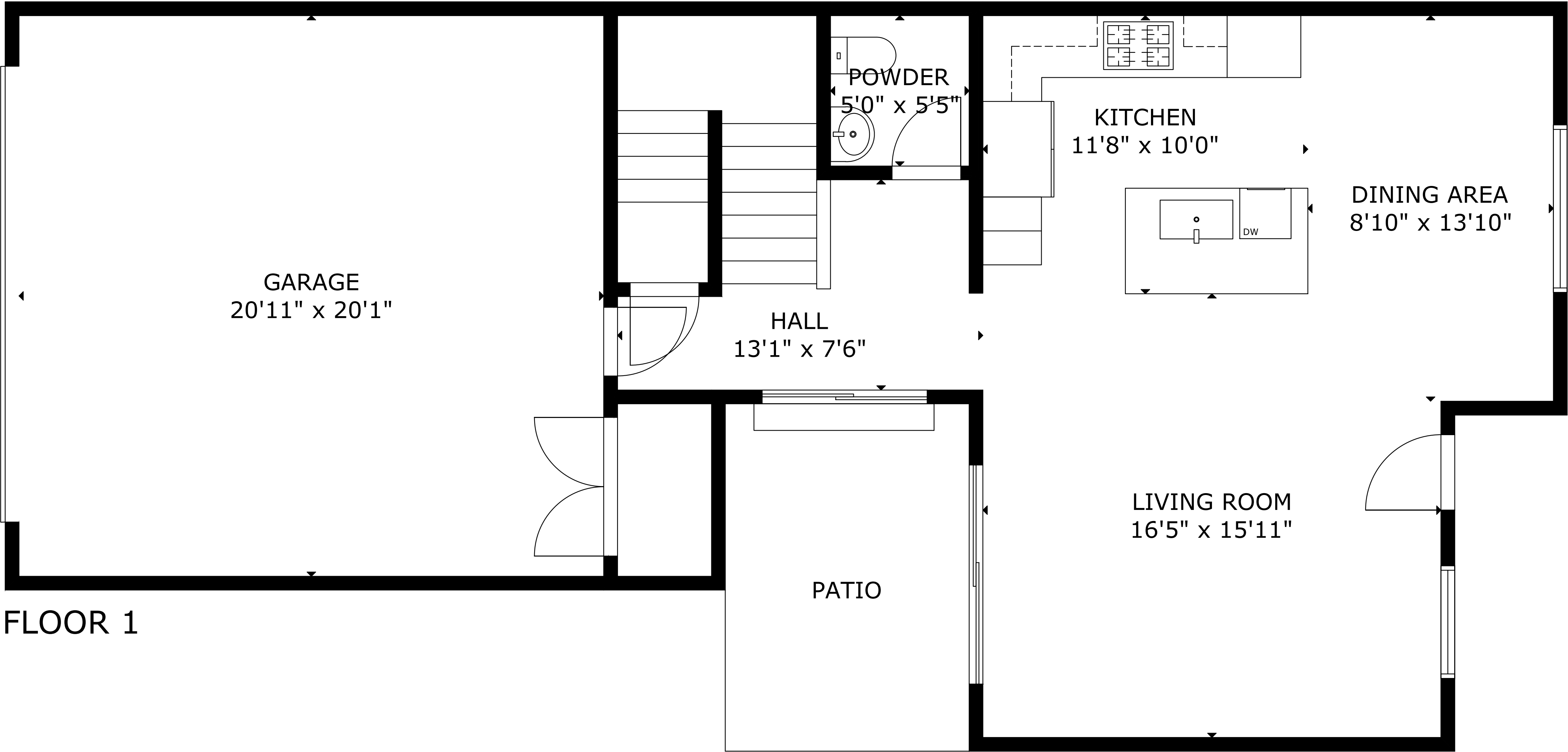
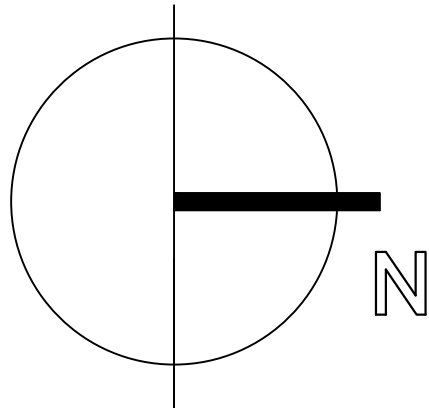
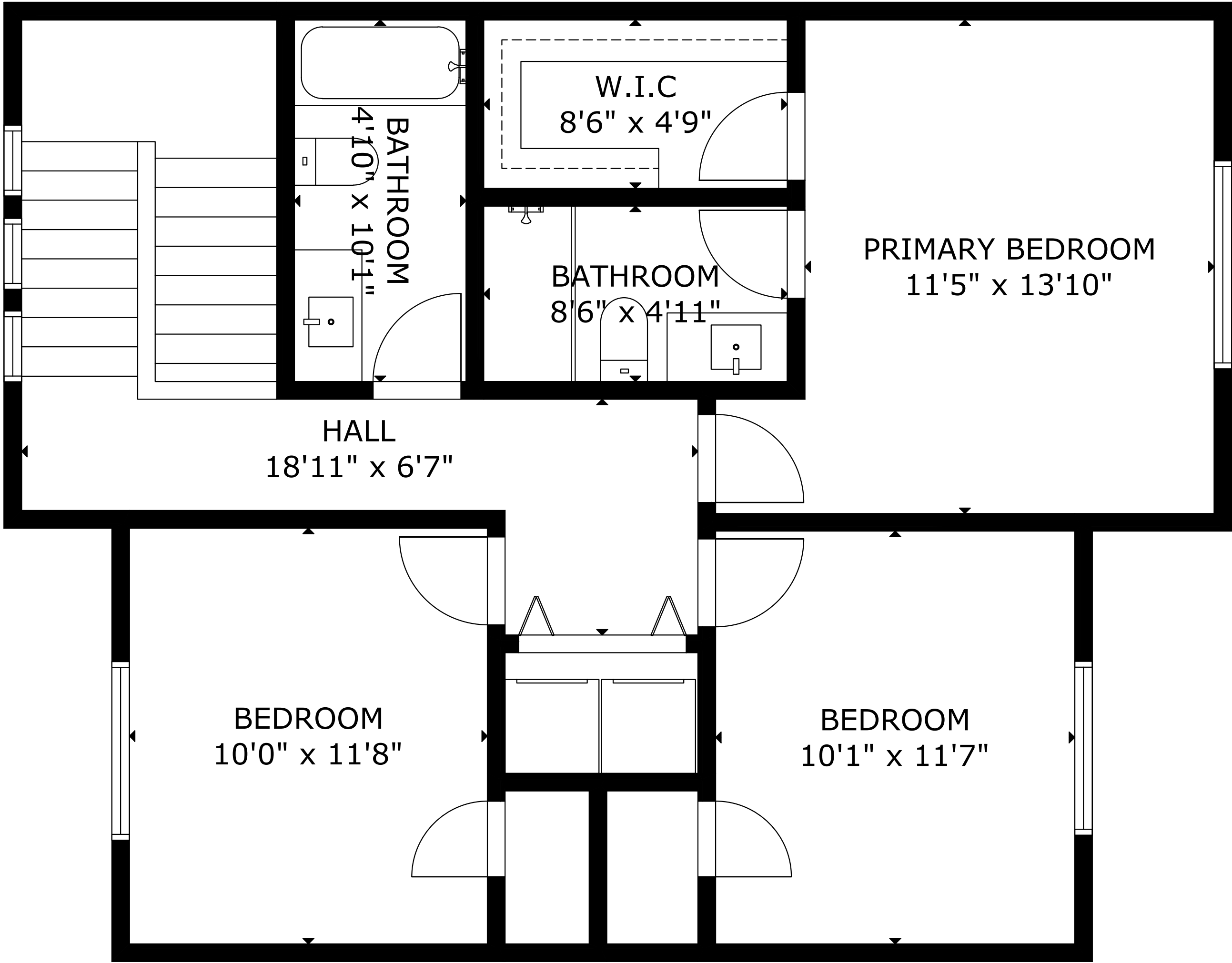


4732 Wheeler Peak



FLOOR 1



FLOOR 2

GROSS EXTERNAL AREA
TOTAL: 1,553 sq ft
FLOOR 1: 715 sq ft, FLOOR 2: 838 sq ft
EXCLUDED AREAS: GARAGE: 445 sq ft
SIZE AND DIMENSIONS ARE APPROXIMATE, ACTUAL MAY VARY