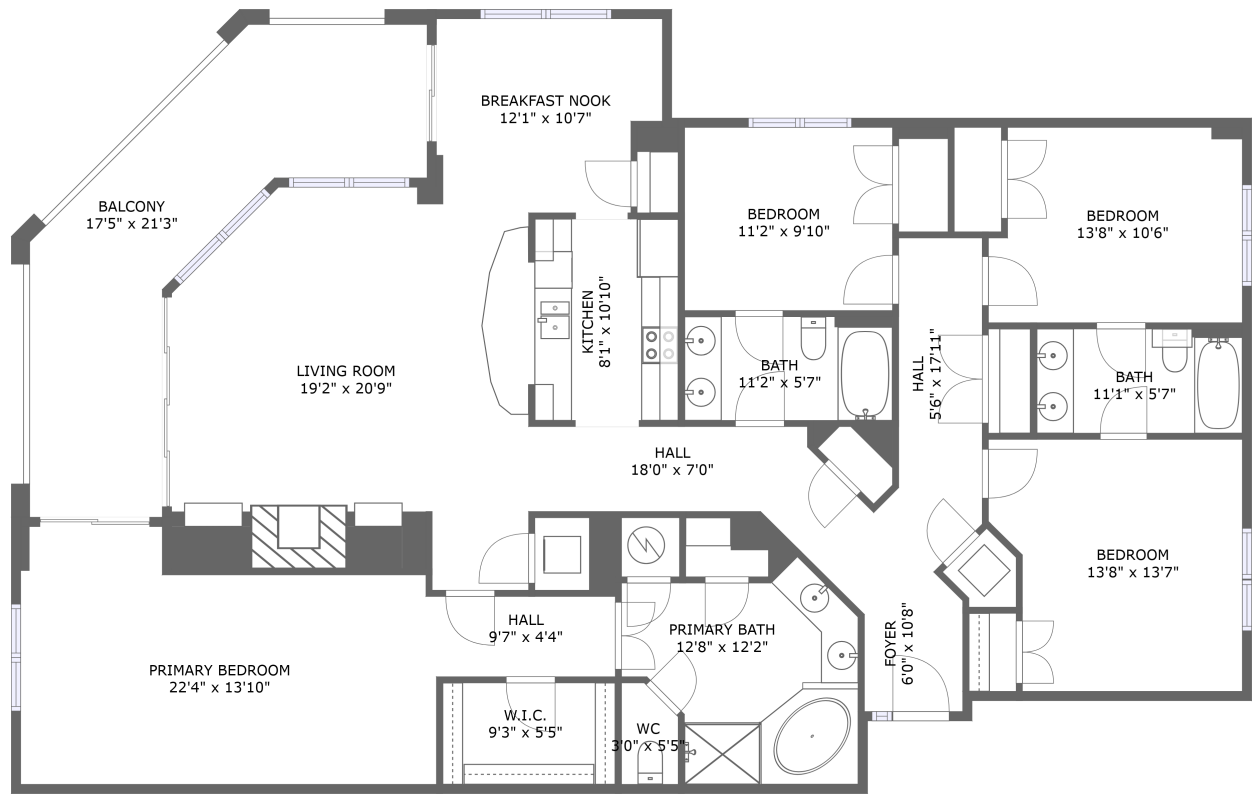



Home report


100 Bridgewater Pointe Place, Westlake Corner, Moneta,
Franklin County, Virginia, United States, 24121, 401




MAIN

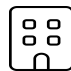
Property summary


 **0** Garages


 **4** Bedrooms

 **3** Bathrooms

 **0** Half baths

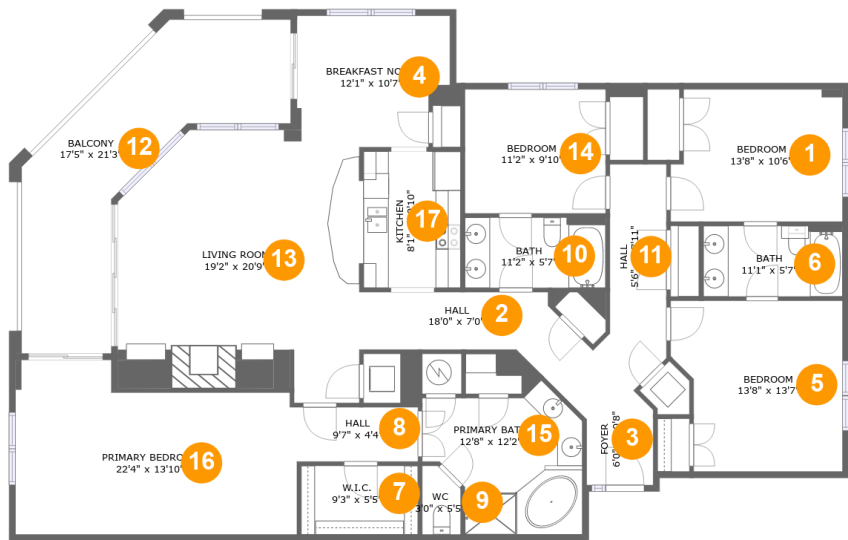
 **1** Floors

 **2,058** Gross living area sqft

 **2,314** Total sqft

Home report

100 Bridgewater Pointe Place, Westlake Corner, Moneta,
Franklin County, Virginia, United States, 24121, 401



Room dimensions

Floor 1 Total sqft: 2314 Living area: 2058

#		Max Dimensions	sqft	Included
1	Bedroom	13'8" x 10'6"	137 sq. ft	Yes
2	Hall	18'0" x 7'0"	84 sq. ft	Yes
3	Foyer	6'0" x 10'8"	51 sq. ft	Yes
4	Breakfast Nook	12'1" x 10'7"	119 sq. ft	Yes
5	Bedroom	13'8" x 13'7"	170 sq. ft	Yes
6	Bath	11'1" x 5'7"	62 sq. ft	Yes
7	W.I.C.	9'3" x 5'5"	51 sq. ft	Yes
8	Hall	9'7" x 4'4"	41 sq. ft	Yes
9	WC	3'0" x 5'5"	15 sq. ft	Yes
10	Bath	11'2" x 5'7"	62 sq. ft	Yes
11	Hall	5'6" x 17'11"	77 sq. ft	Yes

Home report

**100 Bridgewater Pointe Place, Westlake Corner, Moneta,
Franklin County, Virginia, United States, 24121, 401**

#		Max Dimensions	sqft	Included
12	Balcony	17'5" x 21'3"	256 sq. ft	No
13	Living Room	19'2" x 20'9"	375 sq. ft	Yes
14	Bedroom	11'2" x 9'10"	110 sq. ft	Yes
15	Primary Bath	12'8" x 12'2"	120 sq. ft	Yes
16	Primary Bedroom	22'4" x 13'10"	271 sq. ft	Yes
17	Kitchen	8'1" x 10'10"	86 sq. ft	Yes

100 Bridgewater Pointe Place, Westlake Corner, Moneta,
Franklin County, Virginia, United States, 24121, 401

1 Floor 1 - Bedroom



Max Dimensions: 13'8" x 10'6"
Calculated Area: 137 sq. ft
Included: Yes

Heated: Yes
Finished: Yes
Enclosed: Yes
Contiguous: Yes
Permitted: Yes
Wet space: No
Addition: No
Conversion: No

2 Floor 1 - Hall



Max Dimensions: 18'0" x 7'0"
Calculated Area: 84 sq. ft
Included: Yes

Heated: Yes
Finished: Yes
Enclosed: Yes
Contiguous: Yes
Permitted: Yes
Wet space: No
Addition: No
Conversion: No

Home report

100 Bridgewater Pointe Place, Westlake Corner, Moneta,
Franklin County, Virginia, United States, 24121, 401

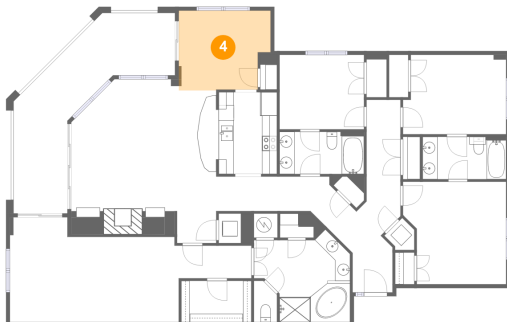
3 Floor 1 - Foyer



Max Dimensions: 6'0" x 10'8"
Calculated Area: 51 sq. ft
Included: Yes

Heated: Yes
Finished: Yes
Enclosed: Yes
Contiguous: Yes
Permitted: Yes
Wet space: No
Addition: No
Conversion: No

4 Floor 1 - Breakfast Nook



Max Dimensions: 12'1" x 10'7"
Calculated Area: 119 sq. ft
Included: Yes

Heated: Yes
Finished: Yes
Enclosed: Yes
Contiguous: Yes
Permitted: Yes
Wet space: No
Addition: No
Conversion: No

5 Floor 1 - Bedroom



Max Dimensions: 13'8" x 13'7"
Calculated Area: 170 sq. ft
Included: Yes

Heated: Yes
Finished: Yes
Enclosed: Yes
Contiguous: Yes
Permitted: Yes
Wet space: No
Addition: No
Conversion: No

100 Bridgewater Pointe Place, Westlake Corner, Moneta,
Franklin County, Virginia, United States, 24121, 401

6 Floor 1 - Bath



Max Dimensions: 11'1" x 5'7"
Calculated Area: 62 sq. ft
Included: Yes

Heated: Yes
Finished: Yes
Enclosed: Yes
Contiguous: Yes
Permitted: Yes
Wet space: Yes
Addition: No
Conversion: No

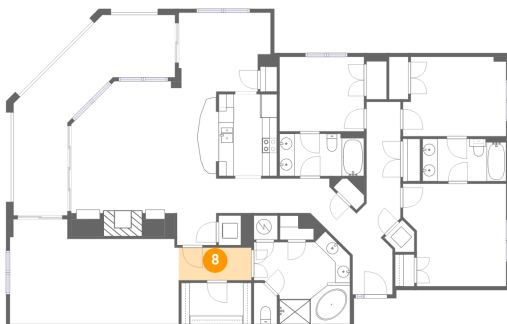
7 Floor 1 - W.I.C.



Max Dimensions: 9'3" x 5'5"
Calculated Area: 51 sq. ft
Included: Yes

Heated: Yes
Finished: Yes
Enclosed: Yes
Contiguous: Yes
Permitted: Yes
Wet space: No
Addition: No
Conversion: No

8 Floor 1 - Hall



Max Dimensions: 9'7" x 4'4"
Calculated Area: 41 sq. ft
Included: Yes

Heated: Yes
Finished: Yes
Enclosed: Yes
Contiguous: Yes
Permitted: Yes
Wet space: No
Addition: No
Conversion: No

100 Bridgewater Pointe Place, Westlake Corner, Moneta,
Franklin County, Virginia, United States, 24121, 401

9 Floor 1 - WC



Max Dimensions: 3'0" x 5'5"
Calculated Area: 15 sq. ft
Included: Yes

Heated: Yes
Finished: Yes
Enclosed: Yes
Contiguous: Yes
Permitted: Yes
Wet space: Yes
Addition: No
Conversion: No

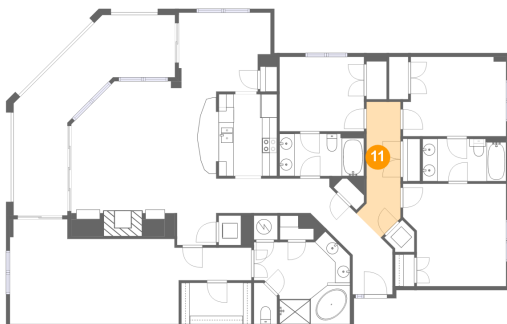
10 Floor 1 - Bath



Max Dimensions: 11'2" x 5'7"
Calculated Area: 62 sq. ft
Included: Yes

Heated: Yes
Finished: Yes
Enclosed: Yes
Contiguous: Yes
Permitted: Yes
Wet space: Yes
Addition: No
Conversion: No

11 Floor 1 - Hall



Max Dimensions: 5'6" x 17'11"
Calculated Area: 77 sq. ft
Included: Yes

Heated: Yes
Finished: Yes
Enclosed: Yes
Contiguous: Yes
Permitted: Yes
Wet space: No
Addition: No
Conversion: No

100 Bridgewater Pointe Place, Westlake Corner, Moneta,
Franklin County, Virginia, United States, 24121, 401

12 Floor 1 - Balcony



Max Dimensions: 17'5" x 21'3"
Calculated Area: 256 sq. ft
Included: No

Heated: No
Finished: Yes
Enclosed: No
Contiguous: Yes
Permitted: Yes
Wet space: No
Addition: No
Conversion: No

13 Floor 1 - Living Room



Max Dimensions: 19'2" x 20'9"
Calculated Area: 375 sq. ft
Included: Yes

Heated: Yes
Finished: Yes
Enclosed: Yes
Contiguous: Yes
Permitted: Yes
Wet space: No
Addition: No
Conversion: No

14 Floor 1 - Bedroom



Max Dimensions: 11'2" x 9'10"
Calculated Area: 110 sq. ft
Included: Yes

Heated: Yes
Finished: Yes
Enclosed: Yes
Contiguous: Yes
Permitted: Yes
Wet space: No
Addition: No
Conversion: No

100 Bridgewater Pointe Place, Westlake Corner, Moneta,
Franklin County, Virginia, United States, 24121, 401

15 Floor 1 - Primary Bath



Max Dimensions: 12'8" x 12'2"
Calculated Area: 120 sq. ft
Included: Yes

Heated: Yes
Finished: Yes
Enclosed: Yes
Contiguous: Yes
Permitted: Yes
Wet space: Yes
Addition: No
Conversion: No

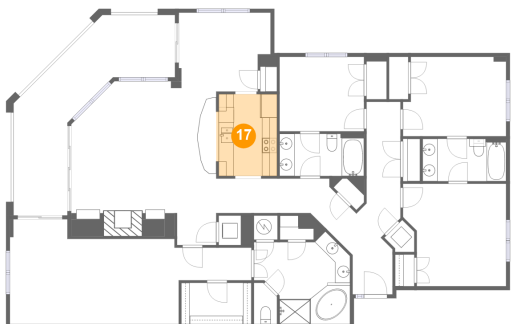
16 Floor 1 - Primary Bedroom



Max Dimensions: 22'4" x 13'10"
Calculated Area: 271 sq. ft
Included: Yes

Heated: Yes
Finished: Yes
Enclosed: Yes
Contiguous: Yes
Permitted: Yes
Wet space: No
Addition: No
Conversion: No

17 Floor 1 - Kitchen



Max Dimensions: 8'1" x 10'10"
Calculated Area: 86 sq. ft
Included: Yes

Heated: Yes
Finished: Yes
Enclosed: Yes
Contiguous: Yes
Permitted: Yes
Wet space: No
Addition: No
Conversion: No