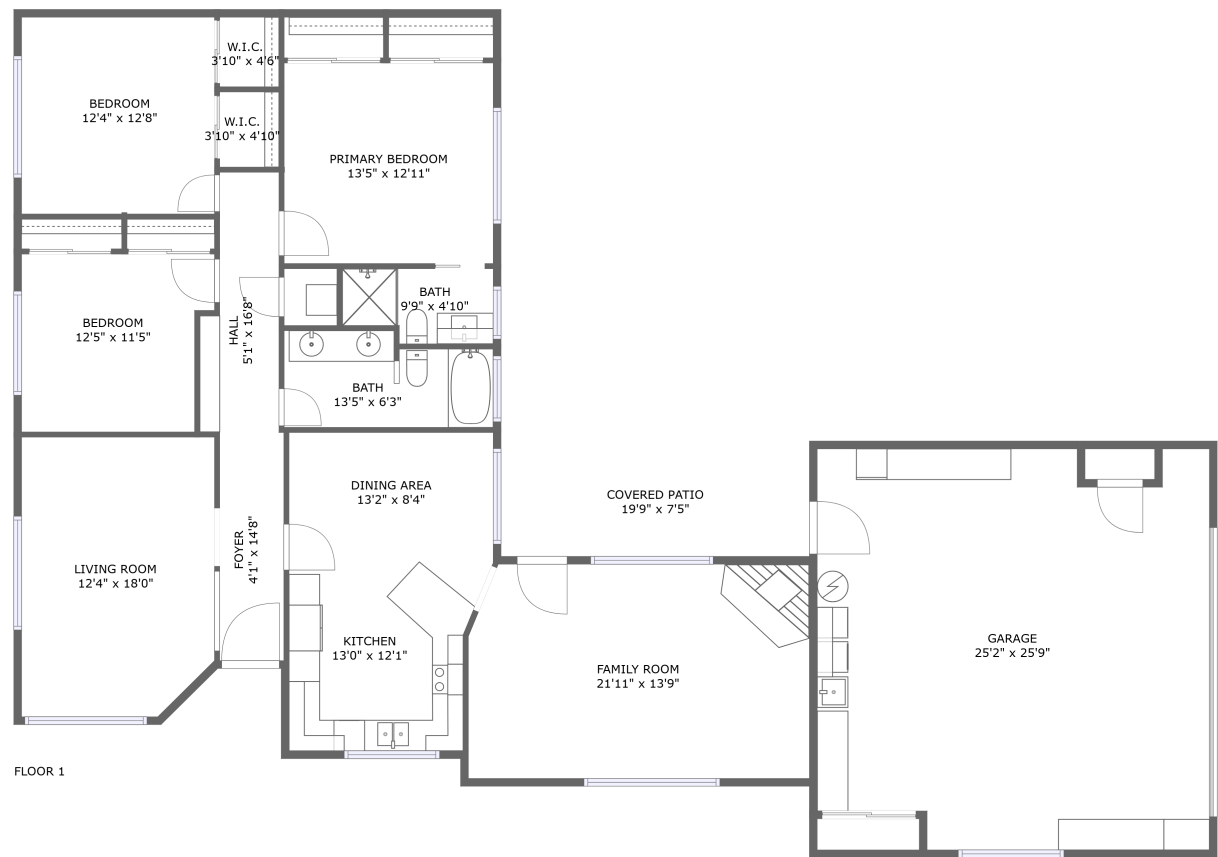


Home report

7735 Del Rio Road, Atascadero, San Luis Obispo County,  
California, United States, 93422




**Total Area: 1793 sq. ft**

Floor 1: 1793 sq. ft


Excluded: Outdoor Patio Covered 147 sq. ft, Garage 656 sq. ft

Property summary

 **1** Floors

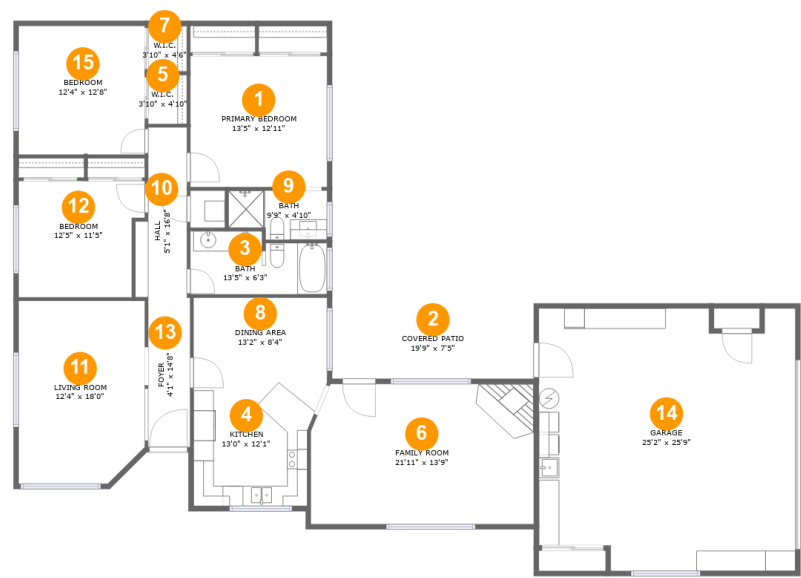
 **3** Bedrooms

 **2** Bathrooms

 **1** Garages

Home report

7735 Del Rio Road, Atascadero, San Luis Obispo County,  
California, United States, 93422



Room dimensions

Floor 1 Total:1793sqft    Excluded: 803sqft

| #  |                 | Max Dimensions | sqft       | Included |
|----|-----------------|----------------|------------|----------|
| 1  | Primary Bedroom | 13'5" x 12'11" | 173 sq. ft | Yes      |
| 2  | Covered Patio   | 19'9" x 7'5"   | 147 sq. ft | No       |
| 3  | Bath            | 13'5" x 6'3"   | 76 sq. ft  | Yes      |
| 4  | Kitchen         | 13'0" x 12'1"  | 140 sq. ft | Yes      |
| 5  | W.I.C.          | 3'10" x 4'10"  | 18 sq. ft  | Yes      |
| 6  | Family Room     | 21'11" x 13'9" | 297 sq. ft | Yes      |
| 7  | W.I.C.          | 3'10" x 4'6"   | 17 sq. ft  | Yes      |
| 8  | Dining Area     | 13'2" x 8'4"   | 110 sq. ft | Yes      |
| 9  | Bath            | 9'9" x 4'10"   | 43 sq. ft  | Yes      |
| 10 | Hall            | 5'1" x 16'8"   | 73 sq. ft  | Yes      |
| 11 | Living Room     | 12'4" x 18'0"  | 216 sq. ft | Yes      |

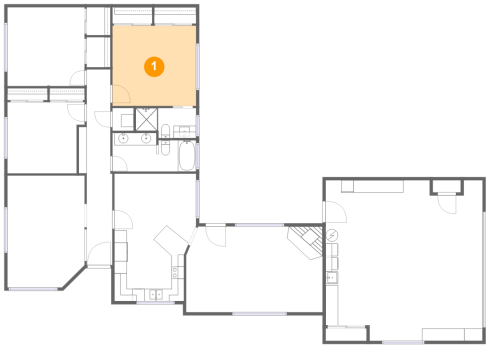
## Home report

**7735 Del Rio Road, Atascadero, San Luis Obispo County,  
California, United States, 93422**

| #  |         | Max Dimensions | sqft       | Included |
|----|---------|----------------|------------|----------|
| 12 | Bedroom | 12'5" x 11'5"  | 132 sq. ft | Yes      |
| 13 | Foyer   | 4'1" x 14'8"   | 61 sq. ft  | Yes      |
| 14 | Garage  | 25'2" x 25'9"  | 619 sq. ft | No       |
| 15 | Bedroom | 12'4" x 12'8"  | 157 sq. ft | Yes      |

7735 Del Rio Road, Atascadero, San Luis Obispo County,  
California, United States, 93422

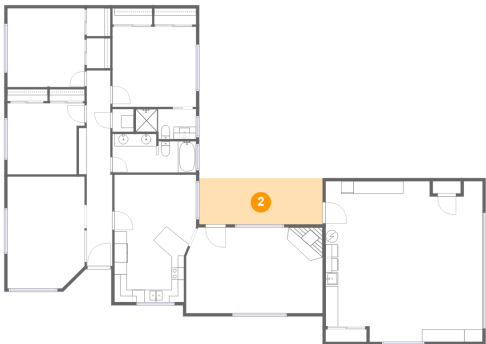
1 Floor 1 - Primary Bedroom



Max Dimensions: 13'5" x 12'11"  
Calculated Area: 173 sq. ft  
Included: Yes

Heated: Yes  
Finished: Yes  
Enclosed: Yes  
Contiguous: Yes  
Permitted: Yes  
Wet space: No  
Addition: No  
Conversion: No

2 Floor 1 - Covered Patio



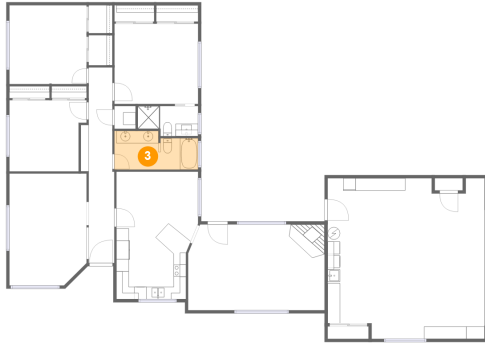
Max Dimensions: 19'9" x 7'5"  
Calculated Area: 147 sq. ft  
Included: No

Heated: No  
Finished: Yes  
Enclosed: No  
Contiguous: Yes  
Permitted: Yes  
Wet space: No  
Addition: No  
Conversion: No

## Home report

7735 Del Rio Road, Atascadero, San Luis Obispo County,  
California, United States, 93422

### 3 Floor 1 - Bath



Max Dimensions: 13'5" x 6'3"  
Calculated Area: 76 sq. ft  
Included: Yes

Heated: Yes  
Finished: Yes  
Enclosed: Yes  
Contiguous: Yes  
Permitted: Yes  
Wet space: Yes  
Addition: No  
Conversion: No

### 4 Floor 1 - Kitchen



Max Dimensions: 13'0" x 12'1"  
Calculated Area: 140 sq. ft  
Included: Yes

Heated: Yes  
Finished: Yes  
Enclosed: Yes  
Contiguous: Yes  
Permitted: Yes  
Wet space: No  
Addition: No  
Conversion: No

### 5 Floor 1 - W.I.C.



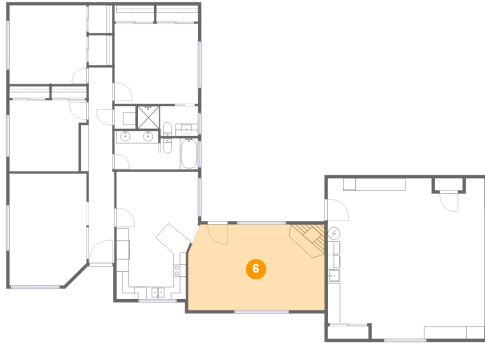
Max Dimensions: 3'10" x 4'10"  
Calculated Area: 18 sq. ft  
Included: Yes

Heated: Yes  
Finished: Yes  
Enclosed: Yes  
Contiguous: Yes  
Permitted: Yes  
Wet space: No  
Addition: No  
Conversion: No

## Home report

7735 Del Rio Road, Atascadero, San Luis Obispo County,  
California, United States, 93422

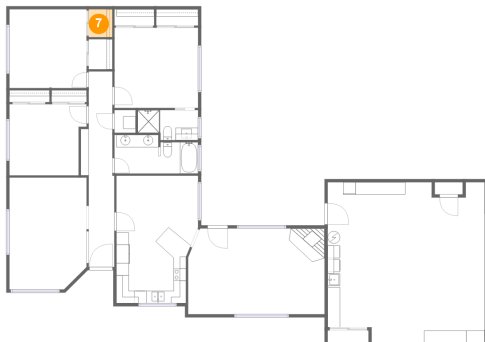
### 6 Floor 1 - Family Room



Max Dimensions: 21'11" x 13'9"  
Calculated Area: 297 sq. ft  
Included: Yes

Heated: Yes  
Finished: Yes  
Enclosed: Yes  
Contiguous: Yes  
Permitted: Yes  
Wet space: No  
Addition: No  
Conversion: No

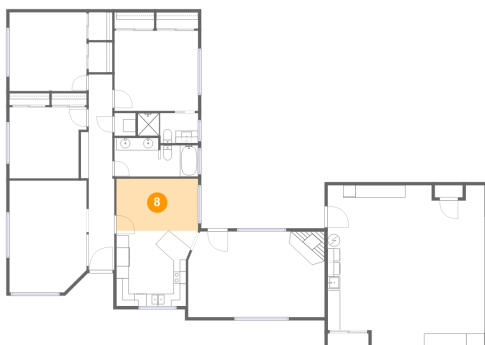
### 7 Floor 1 - W.I.C.



Max Dimensions: 3'10" x 4'6"  
Calculated Area: 17 sq. ft  
Included: Yes

Heated: Yes  
Finished: Yes  
Enclosed: Yes  
Contiguous: Yes  
Permitted: Yes  
Wet space: No  
Addition: No  
Conversion: No

### 8 Floor 1 - Dining Area

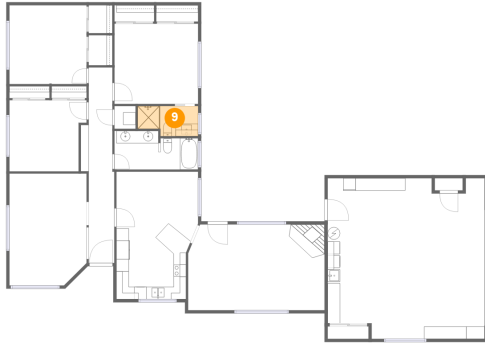


Max Dimensions: 13'2" x 8'4"  
Calculated Area: 110 sq. ft  
Included: Yes

Heated: Yes  
Finished: Yes  
Enclosed: Yes  
Contiguous: Yes  
Permitted: Yes  
Wet space: No  
Addition: No  
Conversion: No

7735 Del Rio Road, Atascadero, San Luis Obispo County,  
California, United States, 93422

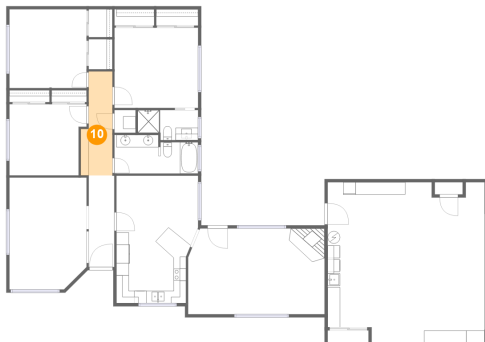
## 9 Floor 1 - Bath



Max Dimensions: 9'9" x 4'10"  
Calculated Area: 43 sq. ft  
Included: Yes

Heated: Yes  
Finished: Yes  
Enclosed: Yes  
Contiguous: Yes  
Permitted: Yes  
Wet space: Yes  
Addition: No  
Conversion: No

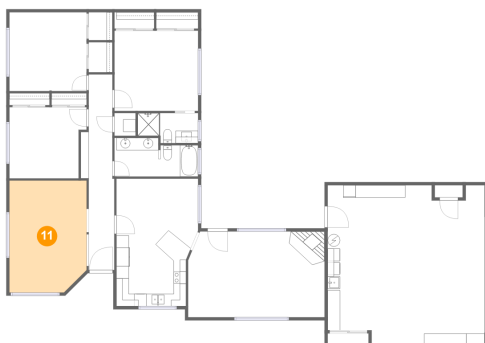
## 10 Floor 1 - Hall



Max Dimensions: 5'1" x 16'8"  
Calculated Area: 73 sq. ft  
Included: Yes

Heated: Yes  
Finished: Yes  
Enclosed: Yes  
Contiguous: Yes  
Permitted: Yes  
Wet space: No  
Addition: No  
Conversion: No

## 11 Floor 1 - Living Room



Max Dimensions: 12'4" x 18'0"  
Calculated Area: 216 sq. ft  
Included: Yes

Heated: Yes  
Finished: Yes  
Enclosed: Yes  
Contiguous: Yes  
Permitted: Yes  
Wet space: No  
Addition: No  
Conversion: No

7735 Del Rio Road, Atascadero, San Luis Obispo County,  
California, United States, 93422

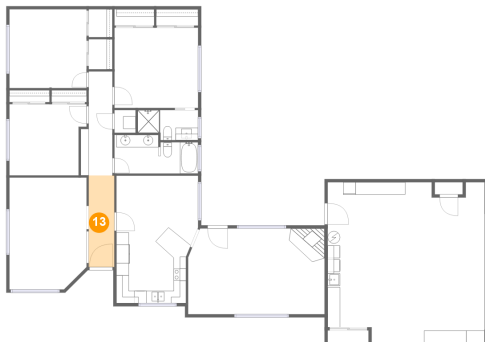
## 12 Floor 1 - Bedroom



Max Dimensions: 12'5" x 11'5"  
Calculated Area: 132 sq. ft  
Included: Yes

Heated: Yes  
Finished: Yes  
Enclosed: Yes  
Contiguous: Yes  
Permitted: Yes  
Wet space: No  
Addition: No  
Conversion: No

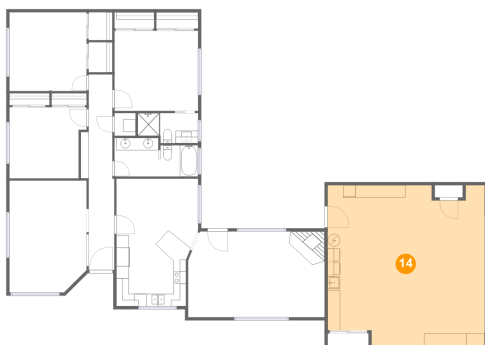
## 13 Floor 1 - Foyer



Max Dimensions: 4'1" x 14'8"  
Calculated Area: 61 sq. ft  
Included: Yes

Heated: Yes  
Finished: Yes  
Enclosed: Yes  
Contiguous: Yes  
Permitted: Yes  
Wet space: No  
Addition: No  
Conversion: No

## 14 Floor 1 - Garage



Max Dimensions: 25'2" x 25'9"  
Calculated Area: 619 sq. ft  
Included: No

Heated: No  
Finished: No  
Enclosed: Yes  
Contiguous: Yes  
Permitted: Yes  
Wet space: No  
Addition: No  
Conversion: No

7735 Del Rio Road, Atascadero, San Luis Obispo County,  
California, United States, 93422

**15** Floor 1 - Bedroom



Max Dimensions: 12'4" x 12'8"  
Calculated Area: 157 sq. ft  
Included: Yes

Heated: Yes  
Finished: Yes  
Enclosed: Yes  
Contiguous: Yes  
Permitted: Yes  
Wet space: No  
Addition: No  
Conversion: No