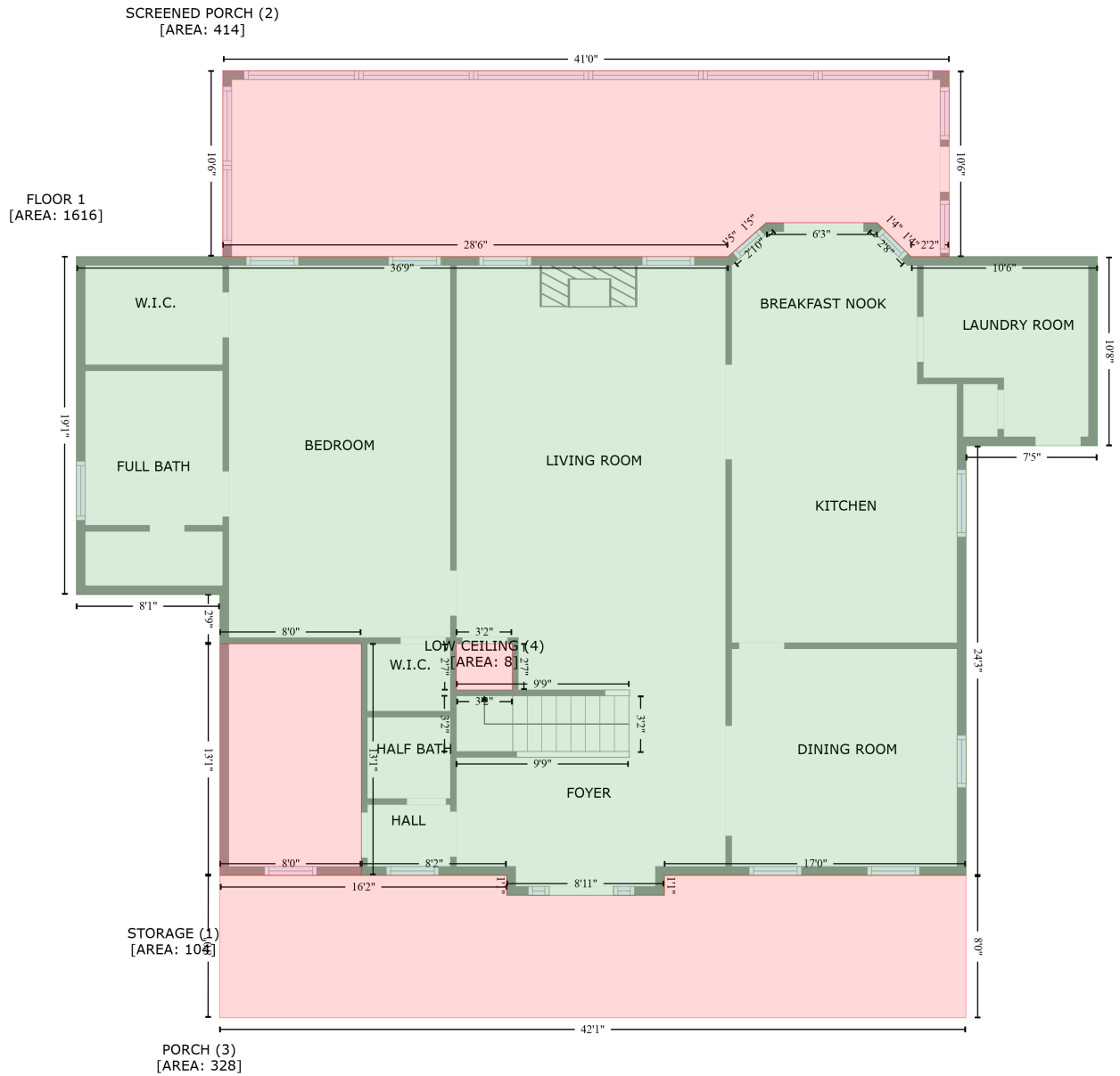


1850 New Home Road, Joppa, Cullman County, Alabama, United States, 35087

Gross Living Area: 2479 sq. ft



Space	Area (sq. ft)	Calculation <small>Coordinate Polygon Area Algorithm using inches</small>
FLOOR 1 (Living area)	1616	$ \begin{aligned} & -((539.4 + 562.3) * (136.4 - 159.3) + (562.3 + 688.6) * (159.3 - 159.3) + (688.6 + 688.6) * (159.3 - \\ & 287.4) + (688.6 + 599.6) * (287.4 - 287.4) + (599.6 + 599.6) * (287.4 - 578.2) + (599.6 + 395.4) * \\ & (578.2 - 578.2) + (395.4 + 395.4) * (578.2 - 591.7) + (395.4 + 288.6) * (591.7 - 591.7) + (288.6 + \\ & 288.6) * (591.7 - 578.2) + (288.6 + 190.2) * (578.2 - 578.2) + (190.2 + 190.2) * (578.2 - 421.3) + \\ & (190.2 + 94.4) * (421.3 - 421.3) + (94.4 + 94.4) * (421.3 - 388.2) + (94.4 + -2.8) * (388.2 - 388.2) + \\ & (-2.8 + -2.8) * (388.2 - 159.3) + (-2.8 + 438.6) * (159.3 - 159.3) + (438.6 + 464.3) * (159.3 - 136.4) \\ & + (464.3 + 539.4) * (136.4 - 136.4)) * 0.5 * 0.00694 + -((292.4 + 254.5) * (421.3 - 421.3) + (254.5 \end{aligned} $

1850 New Home Road, Joppa, Cullman County, Alabama, United States, 35087

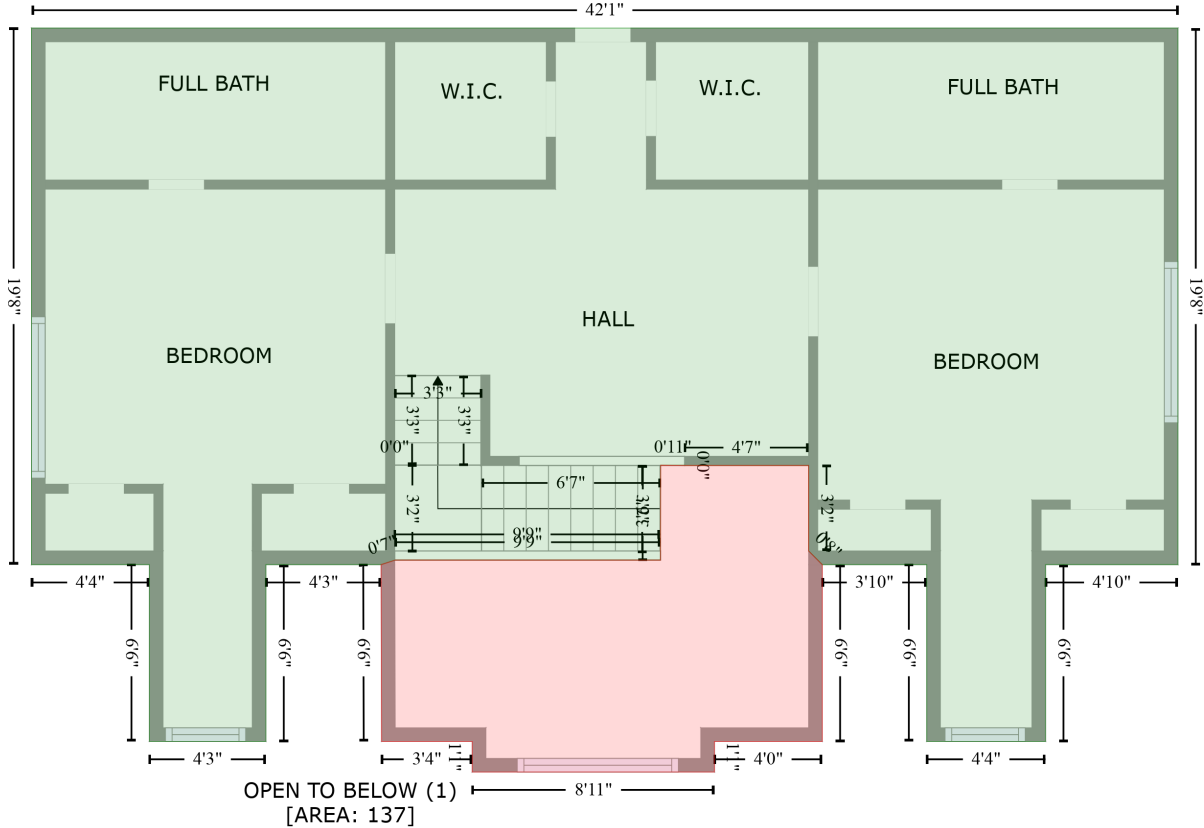
Gross Living Area: 2479 sq. ft

Space	Area (sq. ft)	Calculation <small>Coordinate Polygon Area Algorithm using inches</small>
		$+ 254.5) * (421.3 - 452.7) + (254.5 + 292.4) * (452.7 - 452.7) + (292.4 + 292.4) * (452.7 - 421.3)) * 0.5 * 0.00694$
STORAGE (Non-living area)	104	$-((190.2 + 190.2) * (421.3 - 578.2) + (190.2 + 94.4) * (578.2 - 578.2) + (94.4 + 94.4) * (578.2 - 421.3) + (94.4 + 190.2) * (421.3 - 421.3)) * 0.5 * 0.00694$
SCREENED PORCH (Non-living area)	414	$-((588.1 + 588.1) * (33.5 - 159.3) + (588.1 + 562.3) * (159.3 - 159.3) + (562.3 + 550.8) * (159.3 - 148) + (550.8 + 539.4) * (148 - 136.4) + (539.4 + 464.3) * (136.4 - 136.4) + (464.3 + 451.6) * (136.4 - 148) + (451.6 + 438.6) * (148 - 159.3) + (438.6 + 96.4) * (159.3 - 159.3) + (96.4 + 96.4) * (159.3 - 33.5) + (96.4 + 588.1) * (33.5 - 33.5)) * 0.5 * 0.00694$
PORCH (Non-living area)	328	$-((288.6 + 288.6) * (578.2 - 591.7) + (288.6 + 395.4) * (591.7 - 591.7) + (395.4 + 395.4) * (591.7 - 578.2) + (395.4 + 599.6) * (578.2 - 578.2) + (599.6 + 599.6) * (578.2 - 674.6) + (599.6 + 94.3) * (674.6 - 674.6) + (94.3 + 94.4) * (674.6 - 578.2) + (94.4 + 288.6) * (578.2 - 578.2)) * 0.5 * 0.00694$
LOW CEILING (Non-living area)	8	$-((292.4 + 292.4) * (421.3 - 452.7) + (292.4 + 254.5) * (452.7 - 452.7) + (254.5 + 254.5) * (452.7 - 421.3) + (254.5 + 292.4) * (421.3 - 421.3)) * 0.5 * 0.00694$

1850 New Home Road, Joppa, Cullman County, Alabama, United States, 35087

Gross Living Area: 2479 sq. ft

FLOOR 2
[AREA: 863]



Space	Area (sq. ft)	Calculation <small>Coordinate Polygon Area Algorithm using inches</small>
FLOOR 2 (Living area)	863	$-((599.6 + 599.6) * (264.1 - 500.4) + (599.6 + 541.3) * (500.4 - 500.4) + (541.3 + 541.3) * (500.4 - 578.2) + (541.3 + 488.9) * (578.2 - 578.2) + (488.9 + 488.9) * (578.2 - 500.4) + (488.9 + 442.9) * (500.4 - 500.4) + (442.9 + 436.9) * (500.4 - 494.4) + (436.9 + 436.9) * (494.4 - 456.7) + (436.9 + 382.3) * (456.7 - 456.7) + (382.3 + 382.3) * (456.7 - 456.6) + (382.3 + 371.7) * (456.6 - 456.6) + (371.7 + 371.6) * (456.6 - 498.4) + (371.6 + 254.7) * (498.4 - 498.4) + (254.7 + 248.5) * (498.4 - 500.4) + (248.5 + 197.7) * (500.4 - 500.4) + (197.7 + 197.7) * (500.4 - 578.2) + (197.7 + 146.4) * (578.2 - 578.2) + (146.4 + 146.4) * (578.2 - 500.4) + (146.4 + 94.4) * (500.4 - 500.4) + (94.4 + 94.4) * (500.4 - 264.1) + (94.4 + 599.6) * (264.1 - 264.1)) * 0.5 * 0.00694$
OPEN TO BELOW (Non-living area)	137	$-((371.7 + 382.3) * (456.6 - 456.7) + (382.3 + 436.9) * (456.7 - 456.7) + (436.9 + 436.9) * (456.7 - 494.4) + (436.9 + 442.9) * (494.4 - 500.4) + (442.9 + 442.9) * (500.4 - 578.2) + (442.9 + 395.4) * (578.2 - 578.2) + (395.4 + 395.4) * (578.2 - 591.7) + (395.4 + 288.6) * (591.7 - 591.7) + (288.6 + 288.6) * (591.7 - 578.2) + (288.6 + 248.7) * (578.2 - 578.2) + (248.7 + 248.5) * (578.2 - 500.4) + (248.5 + 254.8) * (500.4 - 498.4) + (254.8 + 371.6) * (498.4 - 498.4) + (371.6 + 371.7) * (498.4 - 456.6)) * 0.5 * 0.00694$