



Home report


159 Rudloff Lane, Cumru Township, Mohnton, Berks County,  
Pennsylvania, United States, 19540




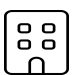
Property summary


 **1** Garages


 **3** Bedrooms

 **2** Bathrooms

 **1** Half baths

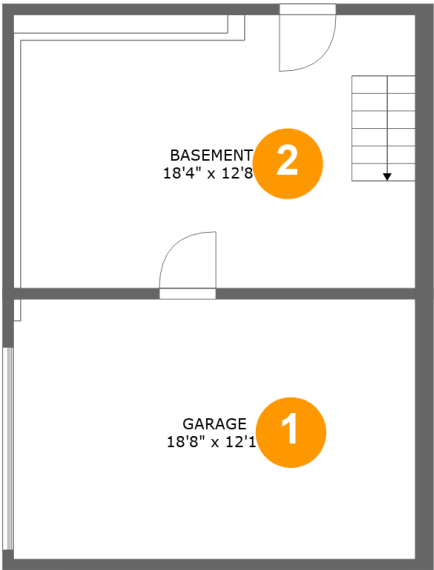
 **3** Floors

 **1,537** Gross living area sqft

 **2,094** Total sqft

Home report

159 Rudloff Lane, Cumru Township, Mohnton, Berks County,  
Pennsylvania, United States, 19540



Room dimensions

Floor 1 Total sqft: 526    Living area: 274

#		Dimensions	sqft	Counted as living area
1	Garage	18'8" x 12'1"	225 sq. ft	No
2	Basement	18'4" x 12'8"	237 sq. ft	Yes

Home report

159 Rudloff Lane, Cumru Township, Mohnton, Berks County,  
Pennsylvania, United States, 19540



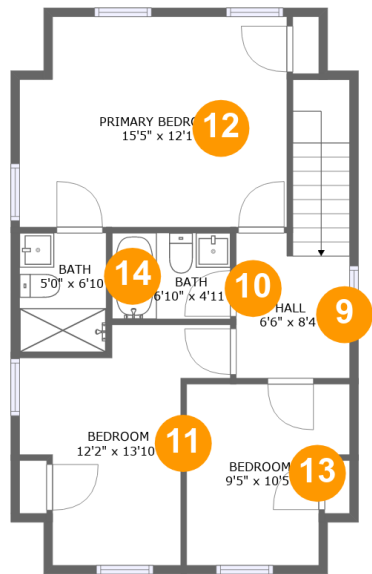
Room dimensions

Floor 2 Total sqft: 941    Living area: 662

#		Dimensions	sqft	Counted as living area
3	Living Room	19'0" x 11'3"	215 sq. ft	Yes
4	WC	5'11" x 6'6"	38 sq. ft	Yes
5	Porch	19'4" x 6'1"	119 sq. ft	No
6	Dining Area	15'5" x 10'4"	193 sq. ft	Yes
7	Kitchen	13'10" x 10'5"	156 sq. ft	Yes
8	Deck	20'0" x 7'11"	160 sq. ft	No

Home report

159 Rudloff Lane, Cumru Township, Mohnton, Berks County,  
Pennsylvania, United States, 19540



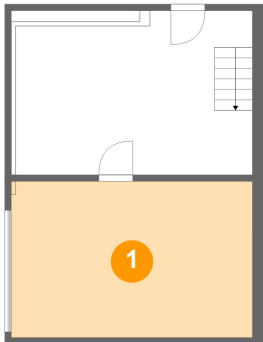
Room dimensions

Floor 3 Total sqft: 627 Living area: 601

#		Dimensions	sqft	Counted as living area
9	Hall	6'6" x 8'4"	83 sq. ft	Yes
10	Bath	6'10" x 4'11"	34 sq. ft	Yes
11	Bedroom	12'2" x 13'10"	115 sq. ft	Yes
12	Primary Bedroom	15'5" x 12'1"	177 sq. ft	Yes
13	Bedroom	9'5" x 10'5"	87 sq. ft	Yes
14	Bath	5'0" x 6'10"	34 sq. ft	Yes

159 Rudloff Lane, Cumru Township, Mohnton, Berks County,  
Pennsylvania, United States, 19540

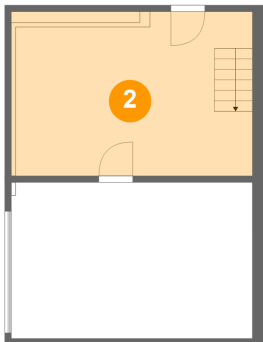
1 Floor 1 - Garage



Dimensions: 18'8" x 12'1"  
Area: 225 sq. ft  
Counted as living area: No

Heated: No  
Finished: No  
Enclosed: Yes  
Contiguous: Yes  
Permitted: Yes  
Wet space: No  
Addition: No  
Conversion: No

2 Floor 1 - Basement



Dimensions: 18'4" x 12'8"  
Area: 237 sq. ft  
Counted as living area: Yes

Heated: Yes  
Finished: Yes  
Enclosed: Yes  
Contiguous: Yes  
Permitted: Yes  
Wet space: No  
Addition: No  
Conversion: No

159 Rudloff Lane, Cumru Township, Mohnton, Berks County,  
Pennsylvania, United States, 19540

3 Floor 2 - Living Room



Dimensions: 19'0" x 11'3"  
Area: 215 sq. ft  
Counted as living area: Yes

Heated: Yes  
Finished: Yes  
Enclosed: Yes  
Contiguous: Yes  
Permitted: Yes  
Wet space: No  
Addition: No  
Conversion: No

4 Floor 2 - WC



Dimensions: 5'11" x 6'6"  
Area: 38 sq. ft  
Counted as living area: Yes

Heated: Yes  
Finished: Yes  
Enclosed: Yes  
Contiguous: Yes  
Permitted: Yes  
Wet space: Yes  
Addition: No  
Conversion: No

5 Floor 2 - Porch



Dimensions: 19'4" x 6'1"  
Area: 119 sq. ft  
Counted as living area: No

Heated: No  
Finished: Yes  
Enclosed: No  
Contiguous: Yes  
Permitted: Yes  
Wet space: No  
Addition: No  
Conversion: No

159 Rudloff Lane, Cumru Township, Mohnton, Berks County,  
Pennsylvania, United States, 19540

6 Floor 2 - Dining Area



Dimensions: 15'5" x 10'4"  
Area: 193 sq. ft  
Counted as living area: Yes

Heated: Yes  
Finished: Yes  
Enclosed: Yes  
Contiguous: Yes  
Permitted: Yes  
Wet space: No  
Addition: No  
Conversion: No

7 Floor 2 - Kitchen



Dimensions: 13'10" x 10'5"  
Area: 156 sq. ft  
Counted as living area: Yes

Heated: Yes  
Finished: Yes  
Enclosed: Yes  
Contiguous: Yes  
Permitted: Yes  
Wet space: No  
Addition: No  
Conversion: No

8 Floor 2 - Deck

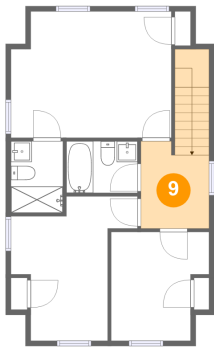


Dimensions: 20'0" x 7'11"  
Area: 160 sq. ft  
Counted as living area: No

Heated: No  
Finished: Yes  
Enclosed: No  
Contiguous: Yes  
Permitted: Yes  
Wet space: No  
Addition: No  
Conversion: No

159 Rudloff Lane, Cumru Township, Mohnton, Berks County,  
Pennsylvania, United States, 19540

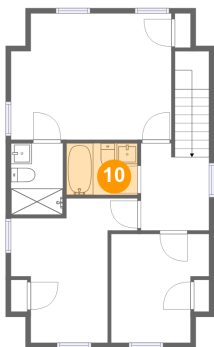
9 Floor 3 - Hall



Dimensions: 6'6" x 8'4"  
Area: 83 sq. ft  
Counted as living area: Yes

Heated: Yes  
Finished: Yes  
Enclosed: Yes  
Contiguous: Yes  
Permitted: Yes  
Wet space: No  
Addition: No  
Conversion: No

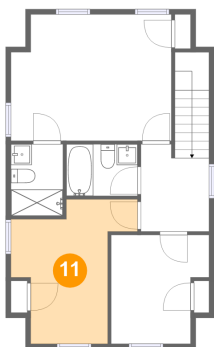
10 Floor 3 - Bath



Dimensions: 6'10" x 4'11"  
Area: 34 sq. ft  
Counted as living area: Yes

Heated: Yes  
Finished: Yes  
Enclosed: Yes  
Contiguous: Yes  
Permitted: Yes  
Wet space: Yes  
Addition: No  
Conversion: No

11 Floor 3 - Bedroom



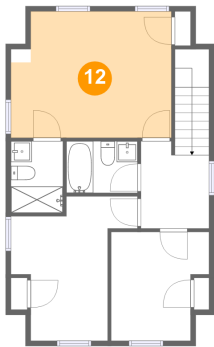
Dimensions: 12'2" x 13'10"  
Area: 115 sq. ft  
Counted as living area: Yes

Heated: Yes  
Finished: Yes  
Enclosed: Yes  
Contiguous: Yes  
Permitted: Yes  
Wet space: No  
Addition: No  
Conversion: No



159 Rudloff Lane, Cumru Township, Mohnton, Berks County,  
Pennsylvania, United States, 19540

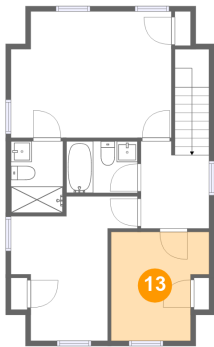
12 Floor 3 - Primary Bedroom



Dimensions: 15'5" x 12'1"  
Area: 177 sq. ft  
Counted as living area: Yes

Heated: Yes  
Finished: Yes  
Enclosed: Yes  
Contiguous: Yes  
Permitted: Yes  
Wet space: No  
Addition: No  
Conversion: No

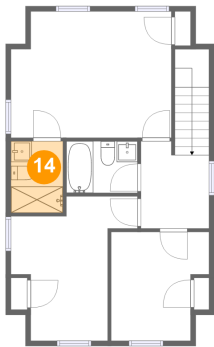
13 Floor 3 - Bedroom



Dimensions: 9'5" x 10'5"  
Area: 87 sq. ft  
Counted as living area: Yes

Heated: Yes  
Finished: Yes  
Enclosed: Yes  
Contiguous: Yes  
Permitted: Yes  
Wet space: No  
Addition: No  
Conversion: No

14 Floor 3 - Bath



Dimensions: 5'0" x 6'10"  
Area: 34 sq. ft  
Counted as living area: Yes

Heated: Yes  
Finished: Yes  
Enclosed: Yes  
Contiguous: Yes  
Permitted: Yes  
Wet space: Yes  
Addition: No  
Conversion: No