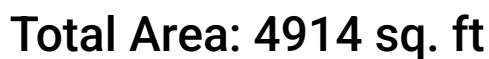


**2901 Honors Row Southeast, Hampton Cove, Owens Cross
Roads, Madison County, Alabama, United States, 35763**



Excluded: Garage 753 sq. ft, Room 354 sq. ft, Outdoor Porch 21 sq. ft, Outdoor Patio 2054 sq. ft, Opentobelow 912 sq. ft, Low Ceiling 140 sq. ft

Property summary



Home report

2901 Honors Row Southeast, Hampton Cove, Owens Cross Roads, Madison County, Alabama, United States, 35763

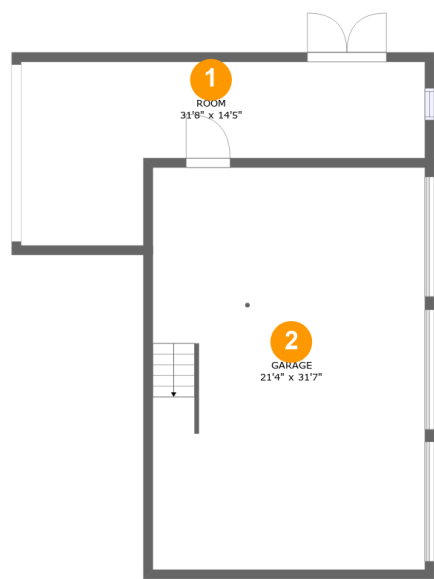


1
Half baths



1
Garages

2901 Honors Row Southeast, Hampton Cove, Owens Cross Roads, Madison County, Alabama, United States, 35763

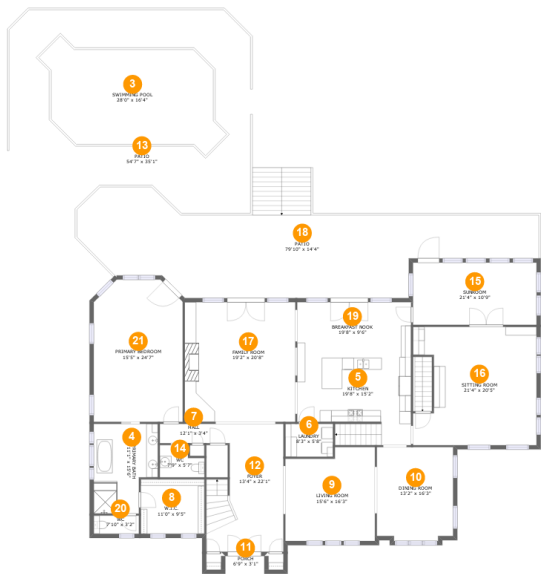


Room dimensions

Floor 1 Below ground Total:0sqft Excluded: 1107sqft

#		Max Dimensions	sqft	Included
1	Room	31'8" x 14'5"	305 sq. ft	No
2	Garage	21'4" x 31'7"	674 sq. ft	No

2901 Honors Row Southeast, Hampton Cove, Owens Cross Roads, Madison County, Alabama, United States, 35763



Room dimensions

Floor 2 Total:3320sqft Excluded: 2075sqft

#		Max Dimensions	sqft	Included
3	Swimming Pool	28'0" x 16'4"	462 sq. ft	No
4	Primary Bath	11'1" x 15'6"	152 sq. ft	Yes
5	Kitchen	19'8" x 15'2"	271 sq. ft	Yes
6	Laundry	8'3" x 5'8"	47 sq. ft	Yes
7	Hall	12'1" x 3'4"	40 sq. ft	Yes
8	W.I.C.	11'0" x 9'5"	104 sq. ft	Yes
9	Living Room	15'6" x 16'3"	234 sq. ft	Yes
10	Dining Room	13'2" x 16'3"	209 sq. ft	Yes
11	Porch	6'9" x 3'1"	21 sq. ft	No
12	Foyer	13'4" x 22'1"	255 sq. ft	Yes
13	Patio	54'7" x 35'1"	1464 sq. ft	No

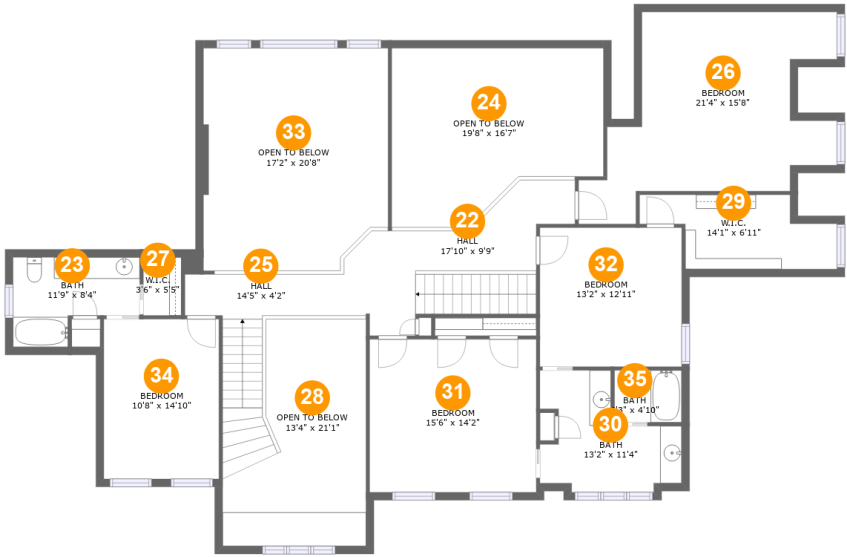
Home report

2901 Honors Row Southeast, Hampton Cove, Owens Cross Roads, Madison County, Alabama, United States, 35763

#		Max Dimensions	sqft	Included
14	WC	7'9" x 5'7"	37 sq. ft	Yes
15	Sunroom	21'4" x 10'9"	230 sq. ft	Yes
16	Sitting Room	21'4" x 20'5"	400 sq. ft	Yes
17	Family Room	19'2" x 20'8"	396 sq. ft	Yes
18	Patio	79'10" x 14'4"	1053 sq. ft	No
19	Breakfast Nook	19'8" x 9'6"	187 sq. ft	Yes
20	WC	7'10" x 3'2"	25 sq. ft	Yes
21	Primary Bedroom	15'5" x 24'7"	363 sq. ft	Yes

Home report

2901 Honors Row Southeast, Hampton Cove, Owens Cross Roads, Madison County, Alabama, United States, 35763



Room dimensions

Floor 3 Total:1593sqft Excluded: 1053sqft

#		Max Dimensions	sqft	Included
22	Hall	17'10" x 9'9"	187 sq. ft	Yes
23	Bath	11'9" x 8'4"	79 sq. ft	Yes
24	Open To Below	19'8" x 16'7"	279 sq. ft	No
25	Hall	14'5" x 4'2"	122 sq. ft	Yes
26	Bedroom	21'4" x 15'8"	250 sq. ft	Yes
27	W.I.C.	3'6" x 5'5"	21 sq. ft	Yes
28	Open To Below	13'4" x 21'1"	222 sq. ft	No
29	W.I.C.	14'1" x 6'11"	75 sq. ft	Yes
30	Bath	13'2" x 11'4"	105 sq. ft	Yes
31	Bedroom	15'6" x 14'2"	220 sq. ft	Yes
32	Bedroom	13'2" x 12'11"	170 sq. ft	Yes

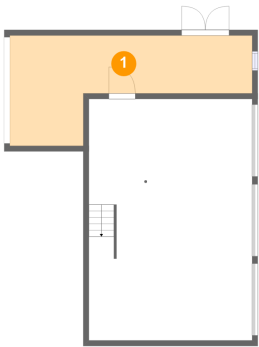
Home report

2901 Honors Row Southeast, Hampton Cove, Owens Cross Roads, Madison County, Alabama, United States, 35763

#		Max Dimensions	sqft	Included
33	Open To Below	17'2" x 20'8"	341 sq. ft	No
34	Bedroom	10'8" x 14'10"	159 sq. ft	Yes
35	Bath	6'3" x 4'10"	30 sq. ft	Yes

2901 Honors Row Southeast, Hampton Cove, Owens Cross Roads, Madison County, Alabama, United States, 35763

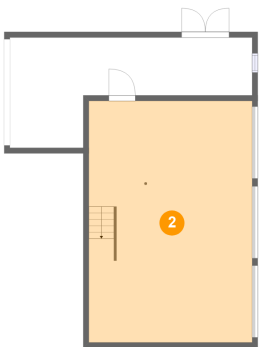
1 Floor 1 - Room



Max Dimensions: 31'8" x 14'5"
Calculated Area: 305 sq. ft
Included: No

Heated: Yes
Finished: No
Enclosed: Yes
Contiguous: Yes
Permitted: Yes
Wet space: No
Addition: No
Conversion: No

2 Floor 1 - Garage



Max Dimensions: 21'4" x 31'7"
Calculated Area: 674 sq. ft
Included: No

Heated: No
Finished: No
Enclosed: Yes
Contiguous: Yes
Permitted: Yes
Wet space: No
Addition: No
Conversion: No

2901 Honors Row Southeast, Hampton Cove, Owens Cross Roads, Madison County, Alabama, United States, 35763

3 Floor 2 - Swimming Pool



Max Dimensions: 28'0" x 16'4"
Calculated Area: 462 sq. ft
Included: No

Heated: No
Finished: No
Enclosed: No
Contiguous: Yes
Permitted: No
Wet space: No
Addition: No
Conversion: No

4 Floor 2 - Primary Bath



Max Dimensions: 11'1" x 15'6"
Calculated Area: 152 sq. ft
Included: Yes

Heated: Yes
Finished: Yes
Enclosed: Yes
Contiguous: Yes
Permitted: Yes
Wet space: Yes
Addition: No
Conversion: No

5 Floor 2 - Kitchen



Max Dimensions: 19'8" x 15'2"
Calculated Area: 271 sq. ft
Included: Yes

Heated: Yes
Finished: Yes
Enclosed: Yes
Contiguous: Yes
Permitted: Yes
Wet space: No
Addition: No
Conversion: No

2901 Honors Row Southeast, Hampton Cove, Owens Cross Roads, Madison County, Alabama, United States, 35763

6 Floor 2 - Laundry



Max Dimensions: 8'3" x 5'8"
Calculated Area: 47 sq. ft
Included: Yes

Heated: Yes
Finished: Yes
Enclosed: Yes
Contiguous: Yes
Permitted: Yes
Wet space: No
Addition: No
Conversion: No

7 Floor 2 - Hall



Max Dimensions: 12'1" x 3'4"
Calculated Area: 40 sq. ft
Included: Yes

Heated: Yes
Finished: Yes
Enclosed: Yes
Contiguous: Yes
Permitted: Yes
Wet space: No
Addition: No
Conversion: No

8 Floor 2 - W.I.C.



Max Dimensions: 11'0" x 9'5"
Calculated Area: 104 sq. ft
Included: Yes

Heated: Yes
Finished: Yes
Enclosed: Yes
Contiguous: Yes
Permitted: Yes
Wet space: No
Addition: No
Conversion: No

2901 Honors Row Southeast, Hampton Cove, Owens Cross Roads, Madison County, Alabama, United States, 35763

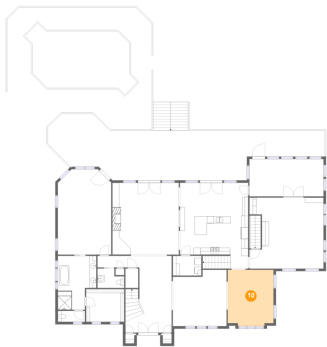
9 Floor 2 - Living Room



Max Dimensions: 15'6" x 16'3"
Calculated Area: 234 sq. ft
Included: Yes

Heated: Yes
Finished: Yes
Enclosed: Yes
Contiguous: Yes
Permitted: Yes
Wet space: No
Addition: No
Conversion: No

10 Floor 2 - Dining Room



Max Dimensions: 13'2" x 16'3"
Calculated Area: 209 sq. ft
Included: Yes

Heated: Yes
Finished: Yes
Enclosed: Yes
Contiguous: Yes
Permitted: Yes
Wet space: No
Addition: No
Conversion: No

11 Floor 2 - Porch

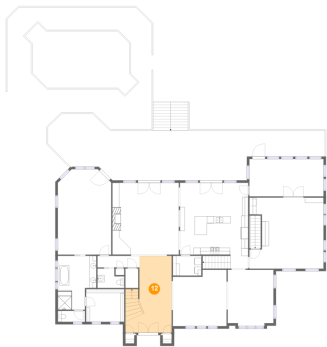


Max Dimensions: 6'9" x 3'1"
Calculated Area: 21 sq. ft
Included: No

Heated: No
Finished: Yes
Enclosed: No
Contiguous: Yes
Permitted: Yes
Wet space: No
Addition: No
Conversion: No

2901 Honors Row Southeast, Hampton Cove, Owens Cross Roads, Madison County, Alabama, United States, 35763

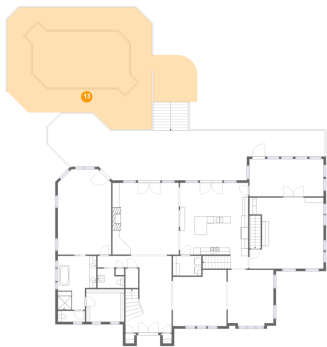
12 Floor 2 - Foyer



Max Dimensions: 13'4" x 22'1"
Calculated Area: 255 sq. ft
Included: Yes

Heated: Yes
Finished: Yes
Enclosed: Yes
Contiguous: Yes
Permitted: Yes
Wet space: No
Addition: No
Conversion: No

13 Floor 2 - Patio



Max Dimensions: 54'7" x 35'1"
Calculated Area: 1464 sq. ft
Included: No

Heated: No
Finished: Yes
Enclosed: No
Contiguous: Yes
Permitted: Yes
Wet space: No
Addition: No
Conversion: No

14 Floor 2 - WC

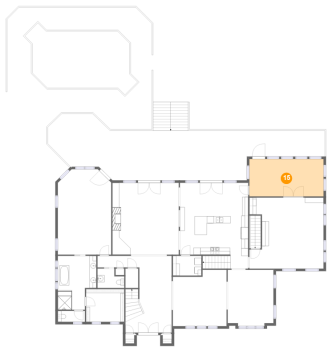


Max Dimensions: 7'9" x 5'7"
Calculated Area: 37 sq. ft
Included: Yes

Heated: Yes
Finished: Yes
Enclosed: Yes
Contiguous: Yes
Permitted: Yes
Wet space: Yes
Addition: No
Conversion: No

2901 Honors Row Southeast, Hampton Cove, Owens Cross Roads, Madison County, Alabama, United States, 35763

15 Floor 2 - Sunroom



Max Dimensions: 21'4" x 10'9"
Calculated Area: 230 sq. ft
Included: Yes

Heated: Yes
Finished: Yes
Enclosed: Yes
Contiguous: Yes
Permitted: Yes
Wet space: No
Addition: No
Conversion: No

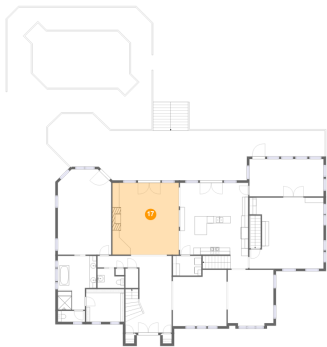
16 Floor 2 - Sitting Room



Max Dimensions: 21'4" x 20'5"
Calculated Area: 400 sq. ft
Included: Yes

Heated: Yes
Finished: Yes
Enclosed: Yes
Contiguous: Yes
Permitted: Yes
Wet space: No
Addition: No
Conversion: No

17 Floor 2 - Family Room

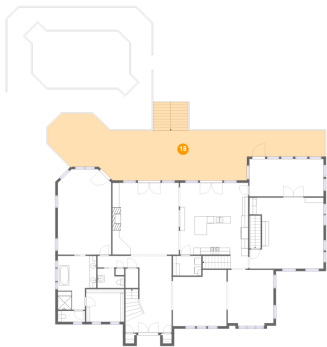


Max Dimensions: 19'2" x 20'8"
Calculated Area: 396 sq. ft
Included: Yes

Heated: Yes
Finished: Yes
Enclosed: Yes
Contiguous: Yes
Permitted: Yes
Wet space: No
Addition: No
Conversion: No

2901 Honors Row Southeast, Hampton Cove, Owens Cross Roads, Madison County, Alabama, United States, 35763

18 Floor 2 - Patio



Max Dimensions: 79'10" x 14'4"
Calculated Area: 1053 sq. ft
Included: No

Heated: No
Finished: Yes
Enclosed: No
Contiguous: Yes
Permitted: Yes
Wet space: No
Addition: No
Conversion: No

19 Floor 2 - Breakfast Nook



Max Dimensions: 19'8" x 9'6"
Calculated Area: 187 sq. ft
Included: Yes

Heated: Yes
Finished: Yes
Enclosed: Yes
Contiguous: Yes
Permitted: Yes
Wet space: No
Addition: No
Conversion: No

20 Floor 2 - WC



Max Dimensions: 7'10" x 3'2"
Calculated Area: 25 sq. ft
Included: Yes

Heated: Yes
Finished: Yes
Enclosed: Yes
Contiguous: Yes
Permitted: Yes
Wet space: Yes
Addition: No
Conversion: No

2901 Honors Row Southeast, Hampton Cove, Owens Cross
Roads, Madison County, Alabama, United States, 35763

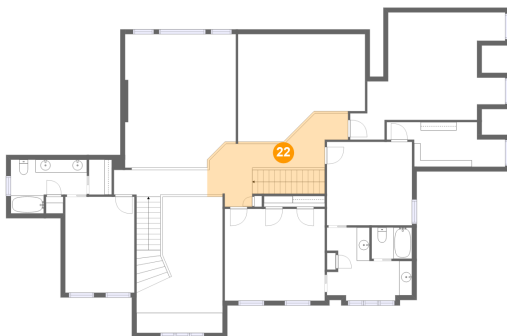
21 Floor 2 - Primary Bedroom



Max Dimensions: 15'5" x 24'7"
Calculated Area: 363 sq. ft
Included: Yes

Heated: Yes
Finished: Yes
Enclosed: Yes
Contiguous: Yes
Permitted: Yes
Wet space: No
Addition: No
Conversion: No

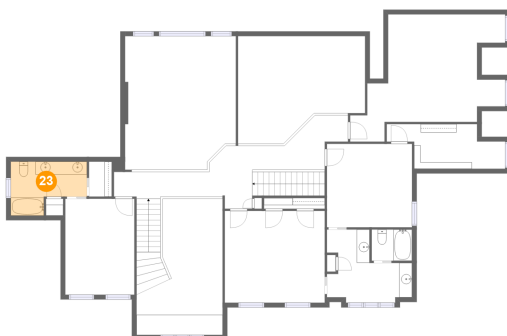
22 Floor 3 - Hall



Max Dimensions: 17'10" x 9'9"
Calculated Area: 187 sq. ft
Included: Yes

Heated: Yes
Finished: Yes
Enclosed: Yes
Contiguous: Yes
Permitted: Yes
Wet space: No
Addition: No
Conversion: No

23 Floor 3 - Bath

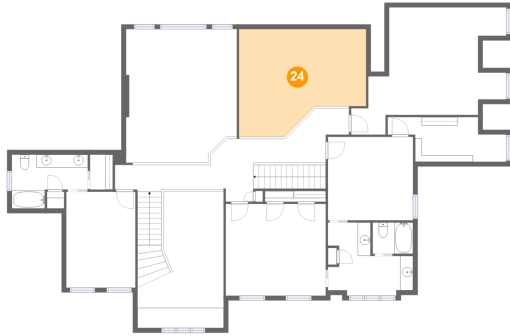


Max Dimensions: 11'9" x 8'4"
Calculated Area: 79 sq. ft
Included: Yes

Heated: Yes
Finished: Yes
Enclosed: Yes
Contiguous: Yes
Permitted: Yes
Wet space: Yes
Addition: No
Conversion: No

2901 Honors Row Southeast, Hampton Cove, Owens Cross Roads, Madison County, Alabama, United States, 35763

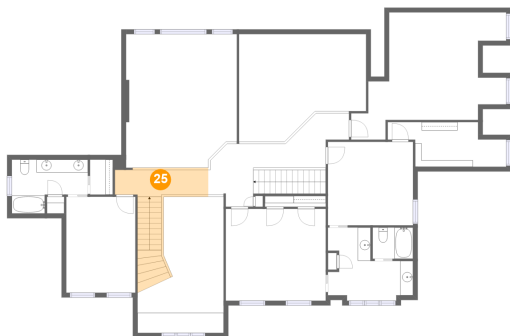
24 Floor 3 - Open To Below



Max Dimensions: 19'8" x 16'7"
Calculated Area: 279 sq. ft
Included: No

Heated: No
Finished: No
Enclosed: No
Contiguous: Yes
Permitted: No
Wet space: No
Addition: No
Conversion: No

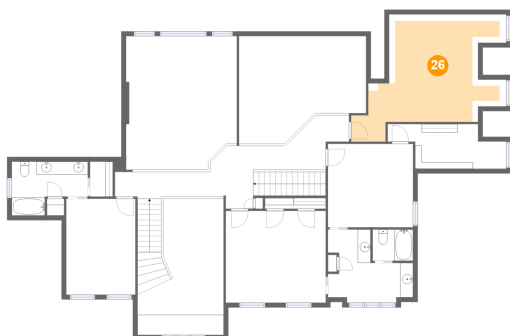
25 Floor 3 - Hall



Max Dimensions: 14'5" x 4'2"
Calculated Area: 122 sq. ft
Included: Yes

Heated: Yes
Finished: Yes
Enclosed: Yes
Contiguous: Yes
Permitted: Yes
Wet space: No
Addition: No
Conversion: No

26 Floor 3 - Bedroom



Max Dimensions: 21'4" x 15'8"
Calculated Area: 250 sq. ft
Included: Yes

Heated: Yes
Finished: Yes
Enclosed: Yes
Contiguous: Yes
Permitted: Yes
Wet space: No
Addition: No
Conversion: No

2901 Honors Row Southeast, Hampton Cove, Owens Cross Roads, Madison County, Alabama, United States, 35763

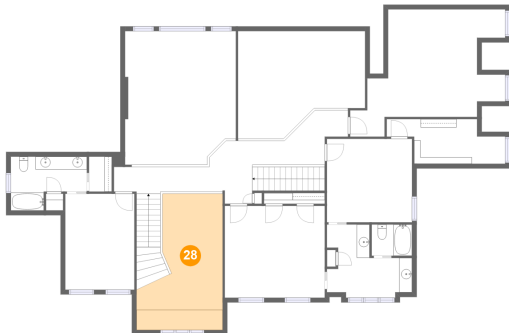
27 Floor 3 - W.I.C.



Max Dimensions: 3'6" x 5'5"
Calculated Area: 21 sq. ft
Included: Yes

Heated: Yes
Finished: Yes
Enclosed: Yes
Contiguous: Yes
Permitted: Yes
Wet space: No
Addition: No
Conversion: No

28 Floor 3 - Open To Below



Max Dimensions: 13'4" x 21'1"
Calculated Area: 222 sq. ft
Included: No

Heated: No
Finished: No
Enclosed: No
Contiguous: Yes
Permitted: No
Wet space: No
Addition: No
Conversion: No

29 Floor 3 - W.I.C.

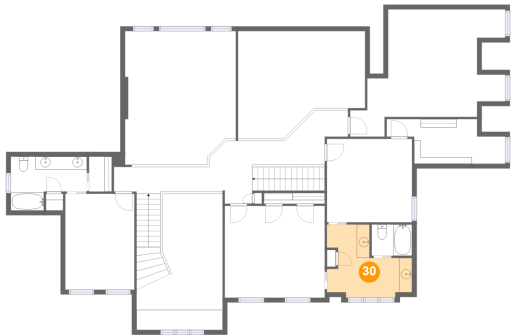


Max Dimensions: 14'1" x 6'11"
Calculated Area: 75 sq. ft
Included: Yes

Heated: Yes
Finished: Yes
Enclosed: Yes
Contiguous: Yes
Permitted: Yes
Wet space: No
Addition: No
Conversion: No

2901 Honors Row Southeast, Hampton Cove, Owens Cross Roads, Madison County, Alabama, United States, 35763

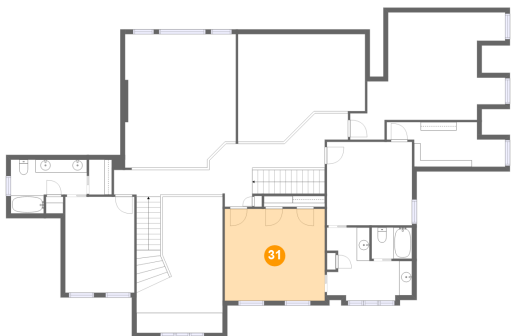
30 Floor 3 - Bath



Max Dimensions: 13'2" x 11'4"
Calculated Area: 105 sq. ft
Included: Yes

Heated: Yes
Finished: Yes
Enclosed: Yes
Contiguous: Yes
Permitted: Yes
Wet space: Yes
Addition: No
Conversion: No

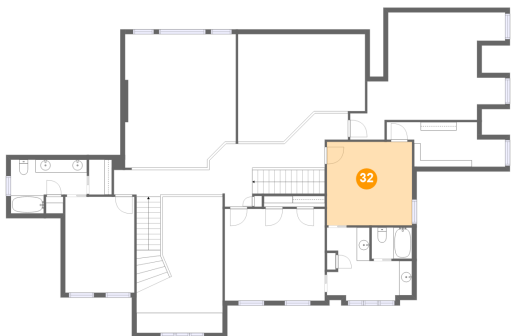
31 Floor 3 - Bedroom



Max Dimensions: 15'6" x 14'2"
Calculated Area: 220 sq. ft
Included: Yes

Heated: Yes
Finished: Yes
Enclosed: Yes
Contiguous: Yes
Permitted: Yes
Wet space: No
Addition: No
Conversion: No

32 Floor 3 - Bedroom

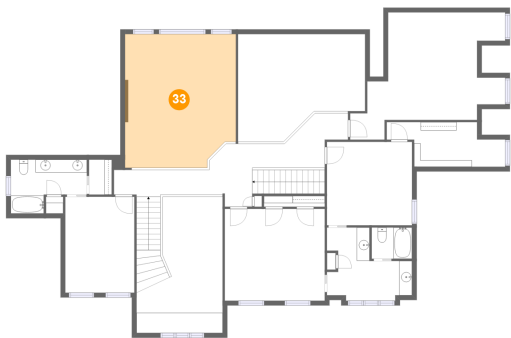


Max Dimensions: 13'2" x 12'11"
Calculated Area: 170 sq. ft
Included: Yes

Heated: Yes
Finished: Yes
Enclosed: Yes
Contiguous: Yes
Permitted: Yes
Wet space: No
Addition: No
Conversion: No

2901 Honors Row Southeast, Hampton Cove, Owens Cross Roads, Madison County, Alabama, United States, 35763

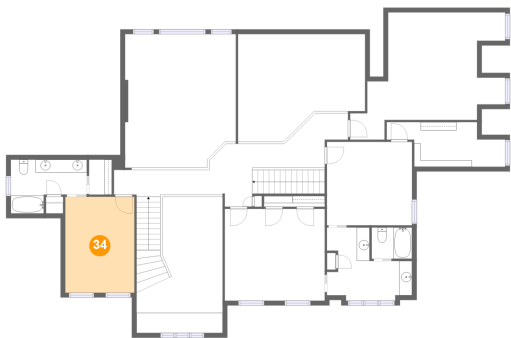
33 Floor 3 - Open To Below



Max Dimensions: 17'2" x 20'8"
Calculated Area: 341 sq. ft
Included: No

Heated: No
Finished: No
Enclosed: No
Contiguous: Yes
Permitted: No
Wet space: No
Addition: No
Conversion: No

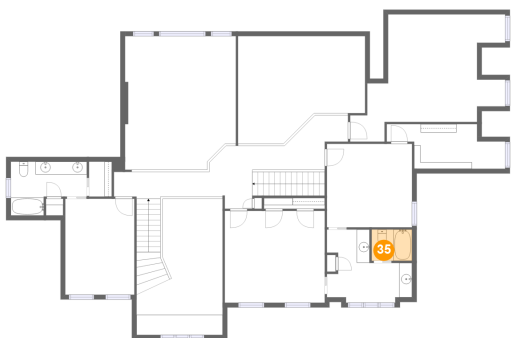
34 Floor 3 - Bedroom



Max Dimensions: 10'8" x 14'10"
Calculated Area: 159 sq. ft
Included: Yes

Heated: Yes
Finished: Yes
Enclosed: Yes
Contiguous: Yes
Permitted: Yes
Wet space: No
Addition: No
Conversion: No

35 Floor 3 - Bath



Max Dimensions: 6'3" x 4'10"
Calculated Area: 30 sq. ft
Included: Yes

Heated: Yes
Finished: Yes
Enclosed: Yes
Contiguous: Yes
Permitted: Yes
Wet space: Yes
Addition: No
Conversion: No